



COVID-19 SUMMARY REPORT FOR CLAYTON COUNTY

- As of July 04, 2021, Clayton County has 24,685 cases of 2019 Novel Coronavirus (COVID-19) and 496 confirmed deaths.
- There were 41 new Positive COVID-19 tests reported in Clayton County from 6/28- 7/04.
- Clayton County accounts for 2.7% of the total cases in Georgia.
- 5.9% of the positive cases in Clayton County have been hospitalized and 2.0% of positive cases in Clayton County have died.
- The average percent of Positive PCR tests in Clayton County over the last 7 days is 4.6%.
- The total number of cases per 100,000 people in Clayton County is 9,036
- In Clayton County 97,654 residents (34%) have received at least one dose of the COVID-19 Vaccine and 85,095 (30%) have been fully vaccinated.

TABLE 1. COMPARISON OF CUMULATIVE COVID-19 CASE COUNTS AND PERCENT CHANGE FOR GEORGIA AND CLAYTON COUNTY

	Jun 28	Jun 29	Jun 30	Jul 01	Jul 02	Jul 03	Jul 04
GA	902533	902904	903338	903699	904073	904073	904073
% Change	0.01%	0.04%	0.05%	0.04%	0.04%	0.00%	0.00%
Clayton County	24648	24658	24665	24668	24675	24681	24685
% Change	0.02%	0.04%	0.03%	0.01%	0.03%	0.02%	0.02%

TABLE 2. COMPARISON OF DAILY NEW COVID-19 POSITIVE INDIVIDUALS FOR GEORGIA AND CLAYTON COUNTY

	Jun 28	Jun 29	Jun 30	Jul 01	Jul 02	Jul 03	Jul 04	Total
GA	130	371	434	361	374	0	0	1670
Clayton County	4	10	7	3	7	6	4	41

Due to the Holiday weekend, Statewide data has not been updated since July 2nd, 2021.



TABLE 3. CUMULATIVE COVID-19 CASE COUNTS BY CITY AND %TOTAL OF CLAYTON COUNTY CASES

City	Jun 28	Jun 29	Jun 30	Jul 01	Jul 02	Jul 03	Jul 04	% Total*
Jonesboro	7766	7767	7770	7770	7771	7773	7773	31.5%
Riverdale	5168	5170	5172	5173	5176	5177	5177	21.0%
Hampton	1327	1327	1327	1328	1329	1330	1330	5.4%
Forest Park	2329	2329	2329	2329	2329	2330	2331	9.4%
Morrow	2237	2241	2241	2241	2241	2241	2241	9.1%
Ellenwood	1478	1478	1478	1478	1478	1478	1479	6.0%
Rex	1615	1617	1617	1618	1620	1621	1622	6.6%
Atlanta	824	824	824	824	824	824	824	3.3%
Lake City	160	160	160	160	160	160	160	0.6%
Stockbridge	353	353	353	353	353	353	353	1.4%
College Park	595	596	597	597	597	597	598	2.4%
Conley	482	482	483	483	483	483	483	2.0%
Fayetteville	162	162	162	162	162	162	162	0.7%
Lovejoy	134	134	134	134	134	134	134	0.5%
Unknown City	18	18	18	18	18	18	18	0.07%
Total	24648	24658	24665	24668	24675	24681	24685	100%

*The percent total defines the percent of cases in Clayton County that comes from each city.

TABLE 4. DAILY NUMBER OF NEW COVID-19 CASES BY CITY

City	Jun 28	Jun 29	Jun 30	Jul 01	Jul 02	Jul 03	Jul 04	Total
Jonesboro	1	1	3	0	1	2	0	8
Riverdale	1	2	2	1	3	1	0	10
Hampton	1	0	0	1	1	1	0	4
Forest Park	0	0	0	0	0	1	1	2
Morrow	0	4	0	0	0	0	0	4
Ellenwood	0	0	0	0	0	0	1	1
Rex	1	2	0	1	2	1	1	8
Atlanta	0	0	0	0	0	0	0	-
Lake City	0	0	0	0	0	0	0	0
Stockbridge	0	0	0	0	0	0	0	0
College Park	0	1	1	0	0	0	1	3
Conley	0	0	1	0	0	0	0	1
Fayetteville	0	0	0	0	0	0	0	0
Lovejoy	0	0	0	0	0	0	0	0
Total	4	10	7	3	7	6	4	41

TABLE 5. COVID-19 CASES HOSPITALIZATION AND DEATH COUNTS IN CLAYTON COUNTY

	Total Count	% of Cases That Died	
Died	496	2.0%	

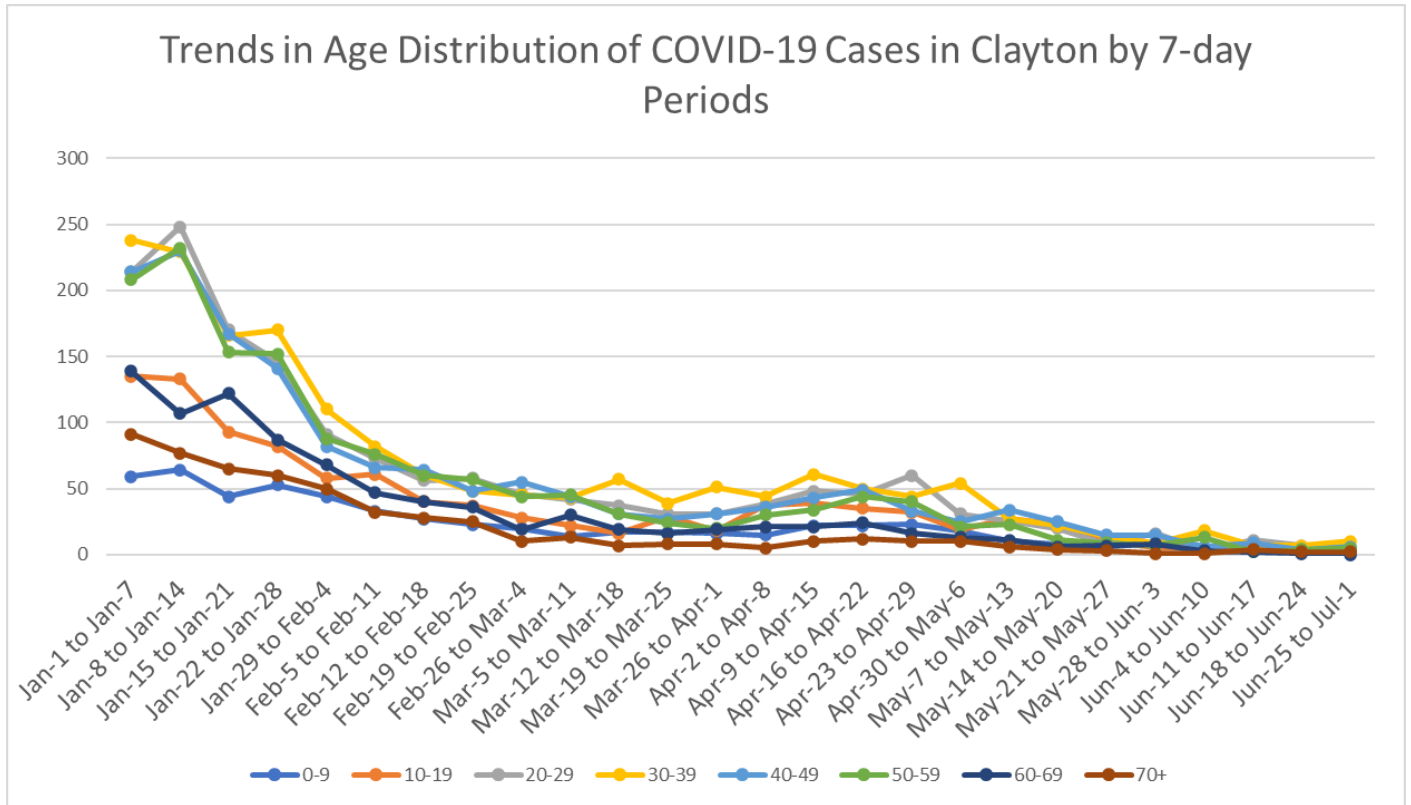
	Previous 14 Days 6/07-6/20	Recent 14 Days 6/21-7/04	% Change
Needed Hospitalization	7	4	-42.9%

TABLE 6. DEMOGRAPHIC DATA OF COVID-19 CASES IN CLAYTON COUNTY

Demographic	Count	%
Gender		
Female	13928	56.4%
Male	10601	42.9%
Unknown	156	0.6%
Age Group		
0-9	1251	5.1%
10-19	2434	9.9%
20-29	4529	18.4%
30-39	4573	18.5%
40-49	4108	16.7%
50-59	3864	15.7%
60-69	2401	9.74%
70+	1498	6.08%
Race		
Asian	727	2.9%
Black	13554	54.9%
Other	2248	9.1%
White	2742	11.1%
Unknown	5414	21.9%
Ethnicity		
Hispanic/Latino	2995	12.1%
Non-Hispanic/Latino	14032	56.8%
Unknown/Not Specified	7658	31.0%

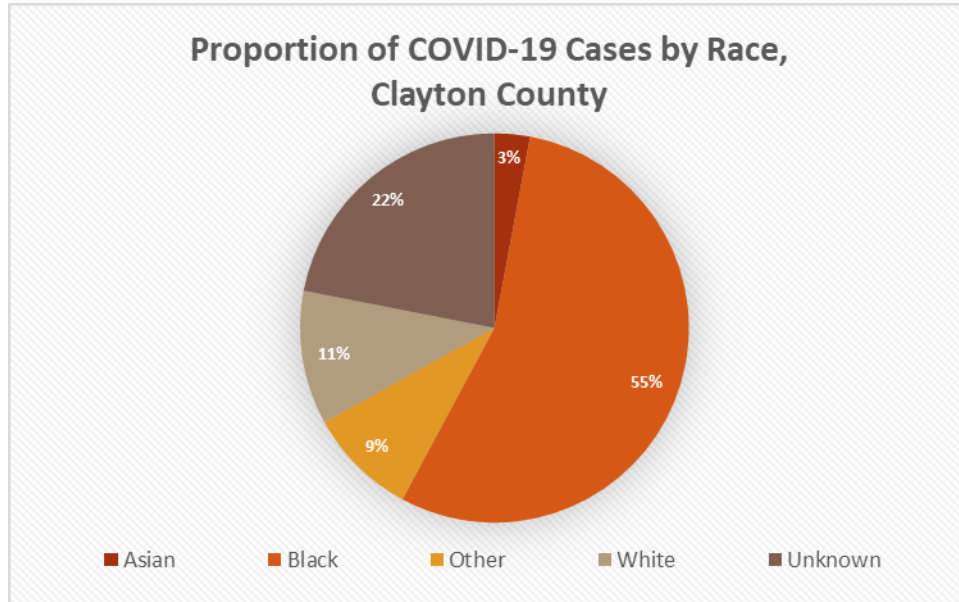


GRAPH 1. DISTRIBUTION OF POSITIVE CASES BY AGE OVER 7-DAY PERIODS

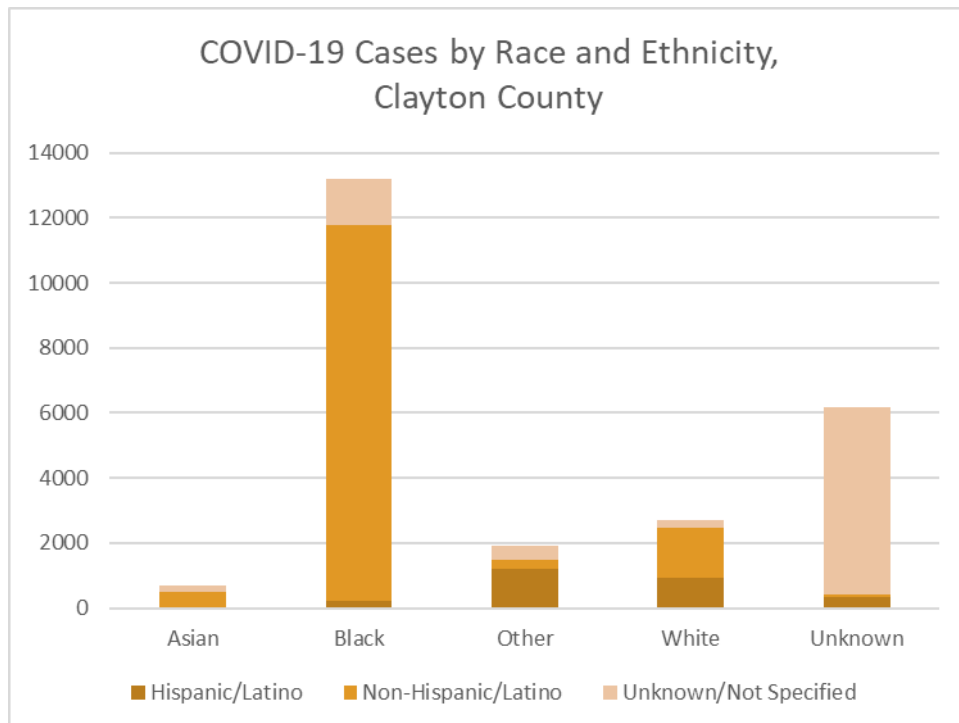


Counts shown reflect the number of confirmed cases as of 4/18/21 using the date of first positive sample collection. All data reported are preliminary and subject to change.

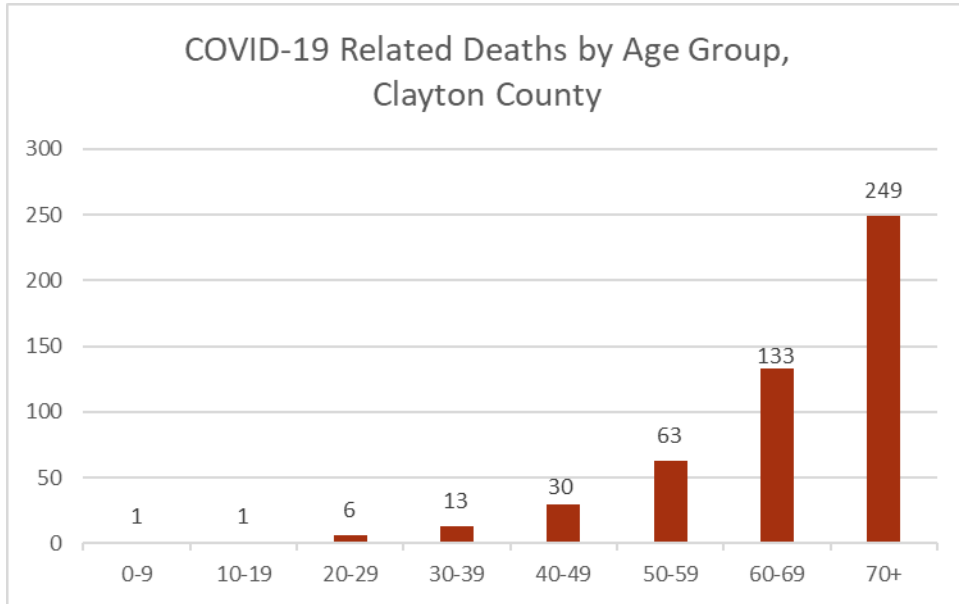
GRAPH 2. PROPORTION OF COVID-19 CASES BY RACE IN CLAYTON COUNTY



GRAPH 3. PROPORTION OF COVID-19 CASES BY RACE AND ETHNICITY IN CLAYTON COUNTY



GRAPH 4. PROPORTION OF COVID-19 RELATED DEATHS BY AGE GROUP CLAYTON COUNTY



GRAPH 5. PROPORTION OF COVID-19 RELATED DEATHS BY RACE AND ETHNICITY IN CLAYTON COUNTY

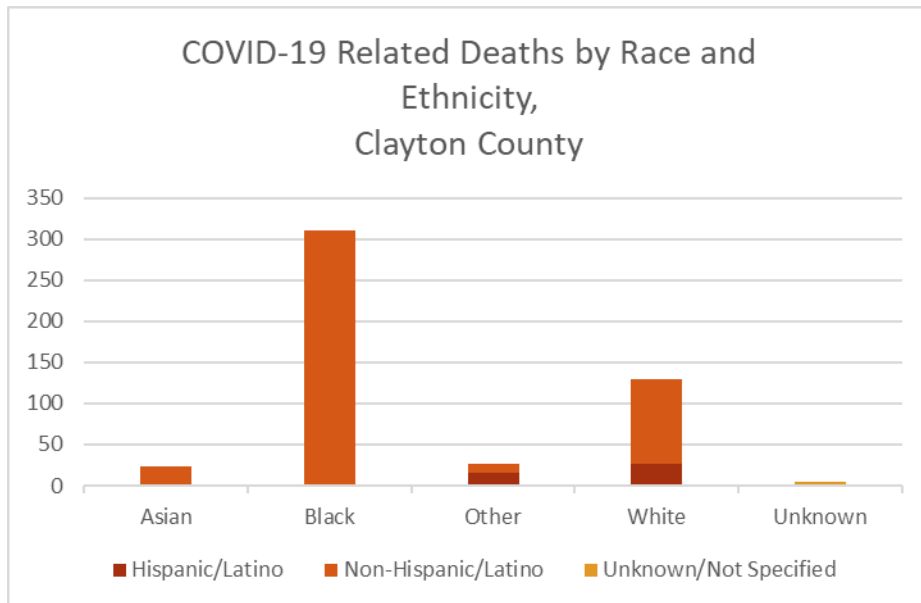




TABLE 7. COVID-19 CASE COUNTS BY ZIP CODE AND CHANGE IN TWO MOST RECENT 14-DAY PERIODS

Zip Code	Previous 6/27	Current 7/04	Percent of Total	Previous 14 Days 6/07-6/20	Recent 14 Days 6/21-7/04	Percent Change in 14-Day Periods
All Clayton	24644	24685	100.0%	116	101	-13%
30236	4312	4319	17.5%	17	15	-12%
30238	3394	3397	13.8%	18	7	-61%
30274	3073	3082	12.5%	16	13	-19%
30260	2386	2390	9.7%	7	7	0%
30297	2329	2331	9.5%	12	7	-42%
30296	2078	2083	8.5%	11	10	-9%
30273	1609	1617	6.6%	6	15	150%
30294	1472	1475	6.0%	6	8	33%
30349	1395	1403	5.7%	7	7	0%
30228	1331	1336	5.4%	8	4	-50%
30288	482	484	2.0%	1	5	400%
30281	353	353	1.4%	2	0	-100%
30215	162	162	0.7%	1	0	-100%
30250	125	125	0.5%	0	0	NA
30237	37	37	0.2%	2	0	-100%
30326	16	16	0.1%	0	0	NA
30287	9	9	0.0%	0	0	NA
30328	8	8	0.0%	0	0	NA
30298	10	10	0.0%	0	0	NA

Note: Data cleaning may lead to reassignment of cases from one territory to another based on corrected addresses which may appear as “decreases” when compared to previous counts. Zip codes with fewer than 5 cases reported were omitted from the table.

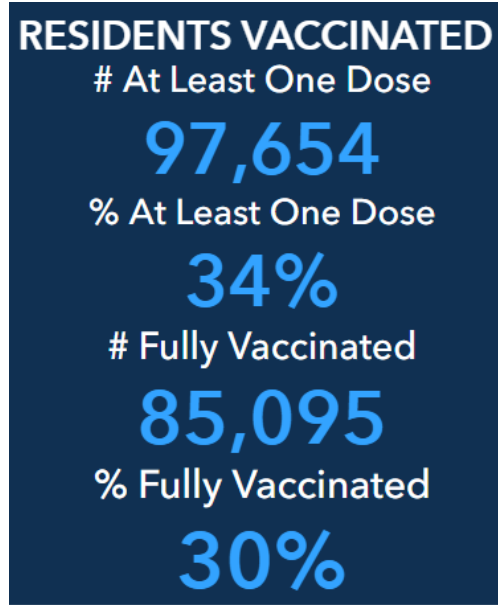
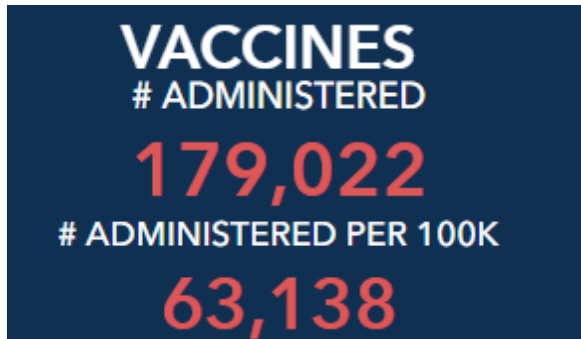


GEORGIA DEPARTMENT OF PUBLIC HEALTH

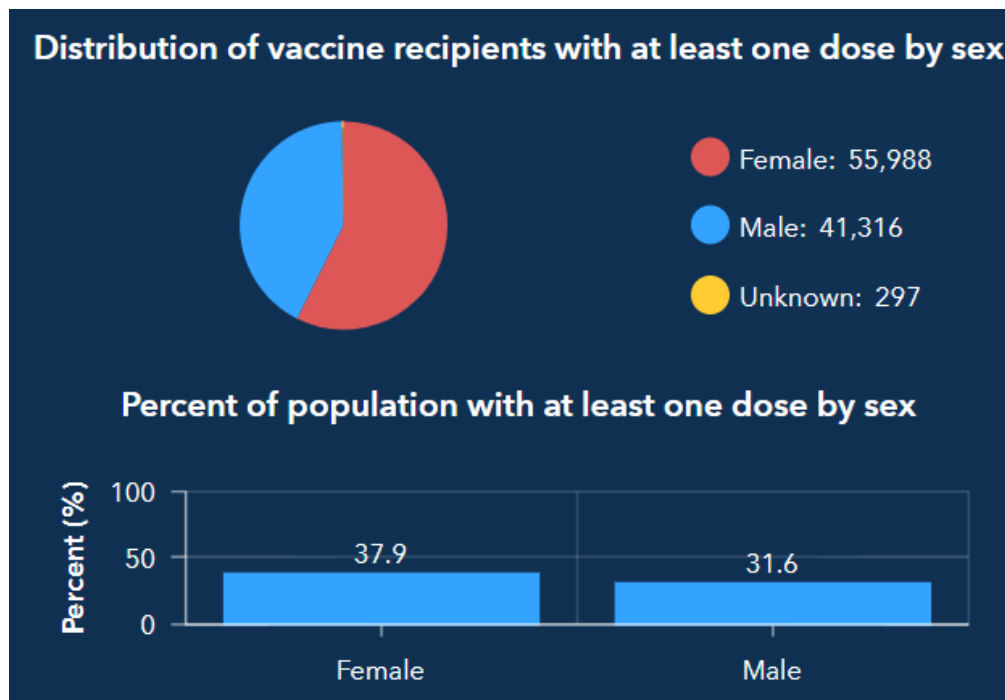
Clayton County Health District

CLAYTON COUNTY VACCINE NUMBERS AS OF 7/02/2021

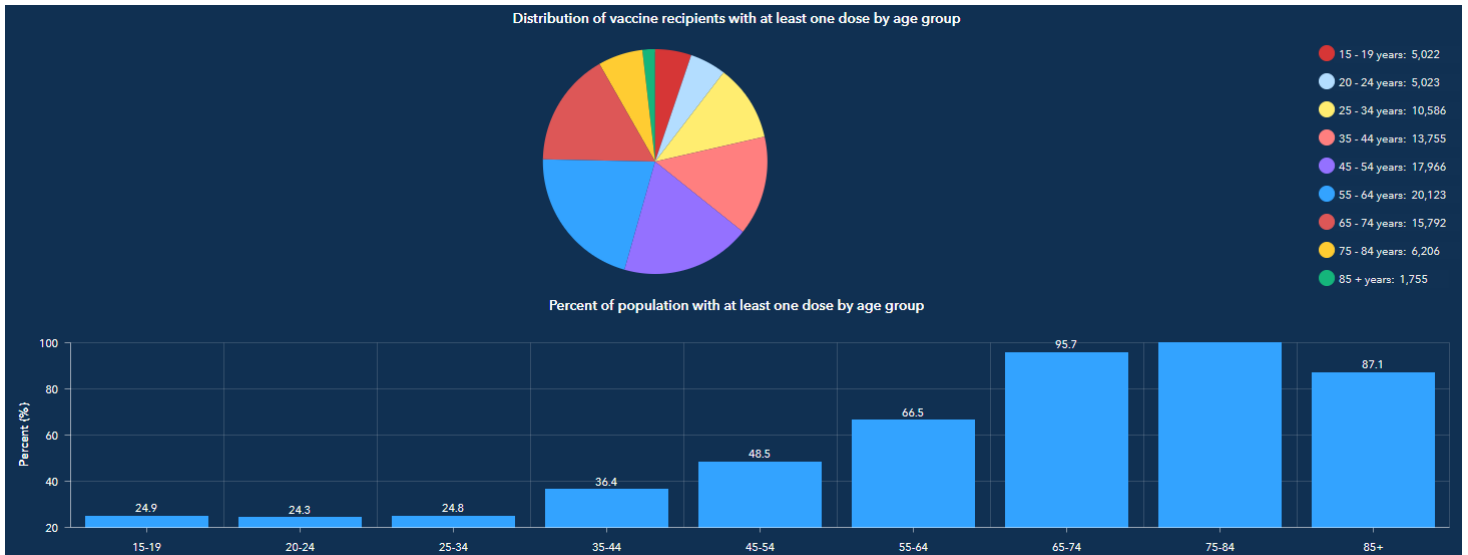
Due to the Holiday weekend, Vaccine data has not been updated since July 2nd, 2021.



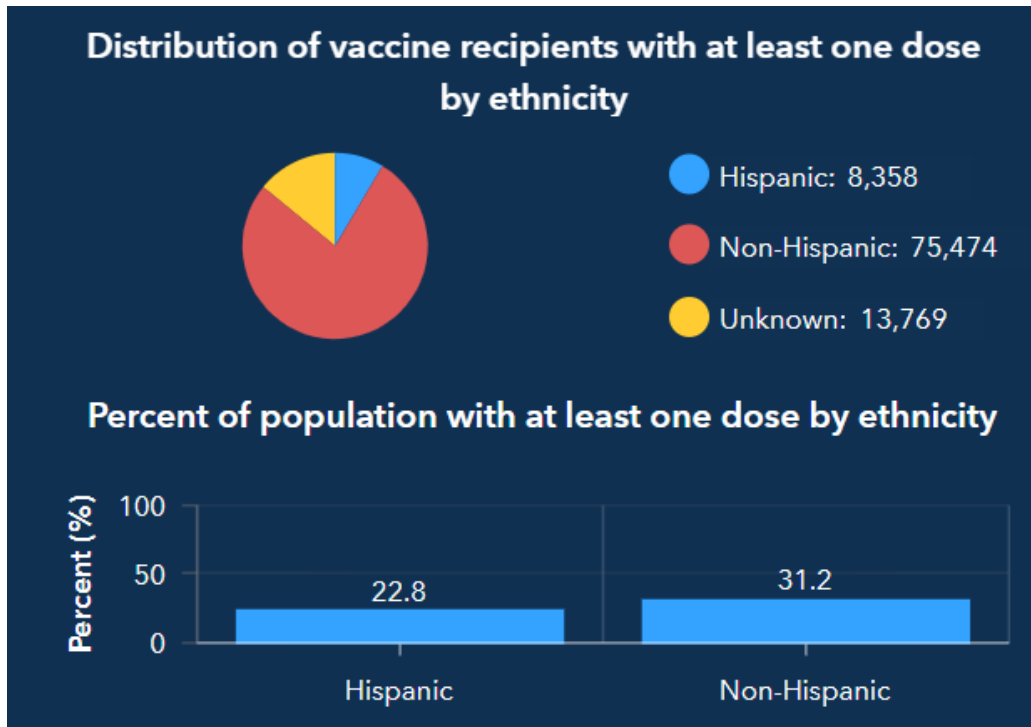
GRAPH 6. PROPORTION OF VACCINE RECIPIENTS WITH AT LEAST ONE DOSE BY SEX IN CLAYTON COUNTY



GRAPH 7. PROPORTION OF VACCINE RECIPIENTS WITH AT LEAST ONE DOSE BY AGE IN CLAYTON COUNTY



GRAPH 8. PROPORTION OF VACCINE RECIPIENTS WITH AT LEAST ONE DOSE BY ETHNICITY IN CLAYTON COUNTY



GRAPH 9. PROPORTION OF VACCINE RECIPIENTS WITH AT LEAST ONE DOSE BY RACE IN CLAYTON COUNTY

