

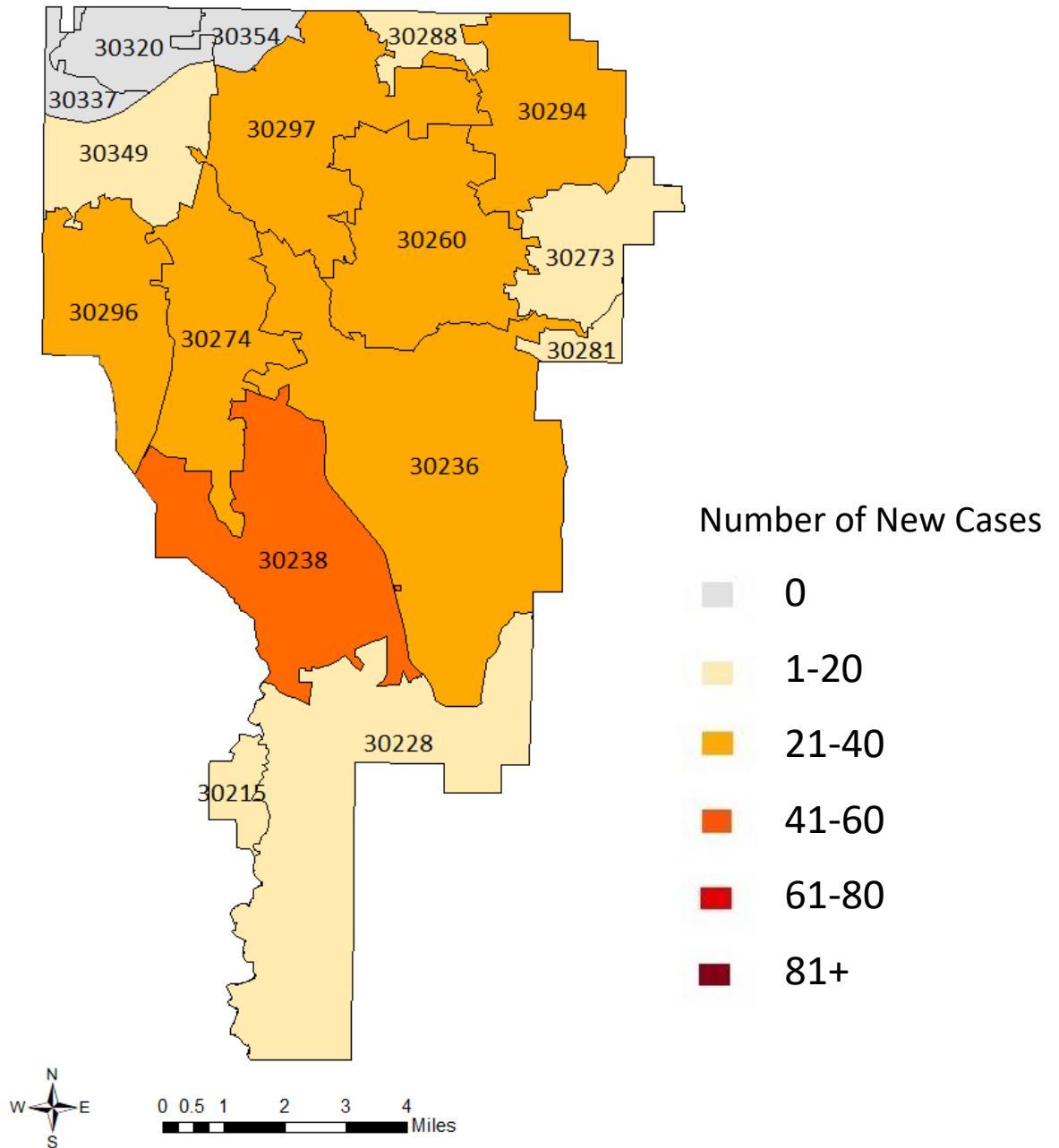


GEORGIA DEPARTMENT OF PUBLIC HEALTH

Clayton County Health District

COVID-19 SUMMARY REPORT FOR CLAYTON COUNTY

Clayton County, Georgia From 10/04- 10/10, 2021



Created: October 12, 2021
Source: Clayton County Health District and
Georgia Department of Public Health, State
Electronic Notifiable Disease Surveillance System



GEORGIA DEPARTMENT OF PUBLIC HEALTH

Clayton County Health District

- As of October 10, 2021, Clayton County has 34,192 cases of 2019 Novel Coronavirus (COVID-19) and 646 confirmed deaths.
- There were 310 new Positive COVID-19 tests reported in Clayton County from 10/04-10/10.
- Clayton County accounts for 2.8% of the total cases in Georgia.
- 8.7% of the positive cases in Clayton County have been hospitalized from 10/04-10/10.
- 5.5% of positive cases in Clayton County have died.
- The average percent of Positive PCR tests in Clayton County over the last 7 days is 7.1%.
- The total number of confirmed cases (PCR) per 100,000 people in Clayton County is 11,257.
- The total number of cases (PCR and Antigen) per 100,000 people in Clayton County is 12,604.
- In Clayton County 130,393 residents (46%) have received at least one dose of the COVID-19 Vaccine and 114,117 (40%) have been fully vaccinated.

TABLE 1. CUMULATIVE COVID-19 CASES PERCENT CHANGE FOR CLAYTON COUNTY

	Oct 04	Oct 05	Oct 06	Oct 07	Oct 08	Oct 09	Oct 10
Clayton County	33915	33968	34000	34063	34109	34163	34192
% Change	0.10%	0.16%	0.09%	0.19%	0.14%	0.16%	0.08%

FIGURE 1. DAILY NEW COVID-19 POSITIVE INDIVIDUALS FOR CLAYTON COUNTY OVER 7-DAY PERIOD

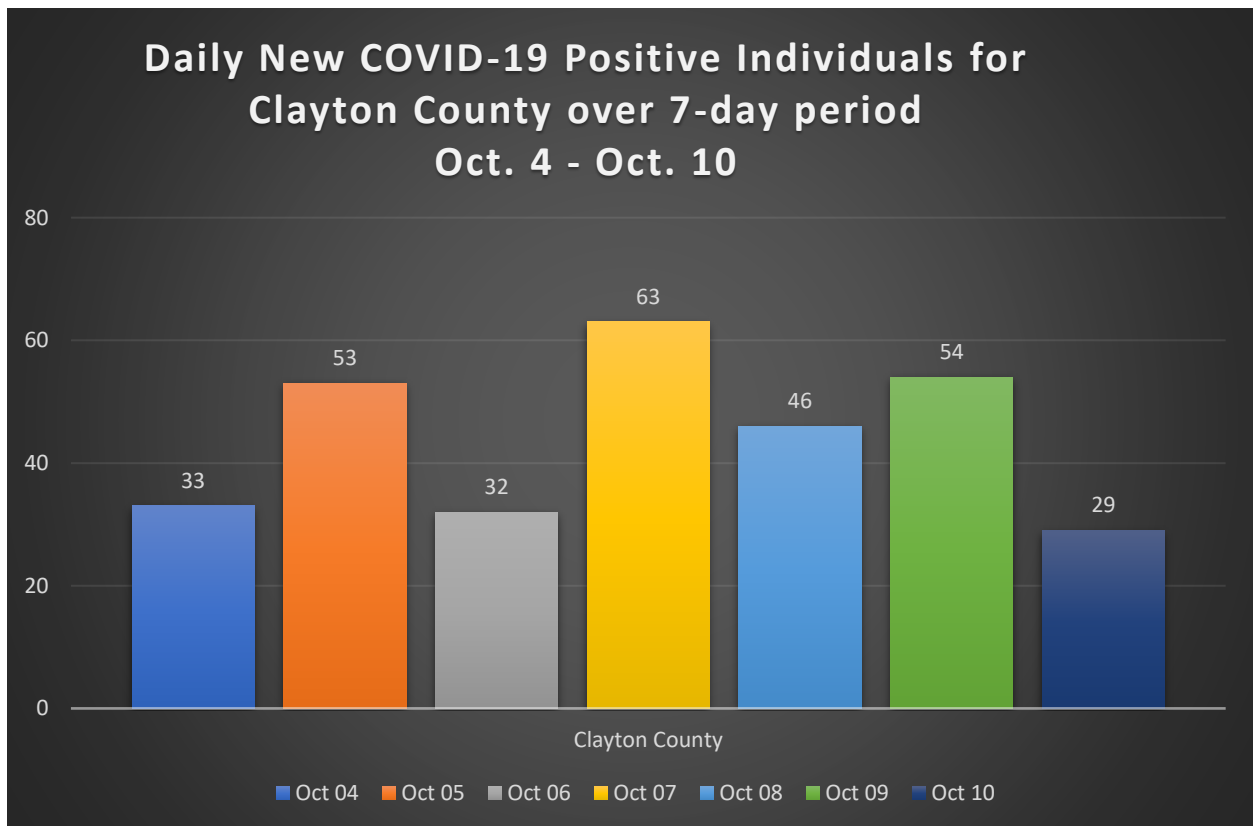




TABLE 2. CUMULATIVE COVID-19 CASE COUNTS BY CITY AND %TOTAL OF CLAYTON COUNTY CASES

City	Oct 04	Oct 05	Oct 06	Oct 07	Oct 08	Oct 09	Oct 10	% Total*
Jonesboro	10491	10504	10514	10534	10544	10563	10568	30.9%
Riverdale	7170	7179	7186	7198	7209	7217	7222	21.1%
Hampton	1967	1970	1970	1971	1972	1974	1975	5.8%
Forest Park	3080	3083	3084	3095	3097	3104	3107	9.1%
Morrow	2929	2936	2937	2941	2943	2949	2954	8.6%
Ellenwood	2089	2094	2105	2108	2114	2119	2120	6.2%
Rex	2181	2185	2186	2188	2194	2196	2200	6.4%
Atlanta	1234	1236	1236	1240	1241	1243	1245	3.6%
Lake City	192	192	192	192	192	192	193	0.6%
Stockbridge	499	500	500	502	505	508	509	1.5%
College Park	848	849	849	850	853	853	853	2.5%
Conley	666	666	667	669	670	670	671	2.0%
Fayetteville	238	238	238	239	239	239	239	0.7%
Lovejoy	187	187	187	187	187	187	187	0.5%
Unknown City	144	149	149	149	149	149	149	0.4%
Total	33915	33968	34000	34063	34109	34163	34192	100%

TABLE 3. DAILY NUMBER OF NEW COVID-19 CASES BY CITY

City	Oct 04	Oct 05	Oct 06	Oct 07	Oct 08	Oct 09	Oct 10	Total
Jonesboro	6	13	10	20	10	19	5	83
Riverdale	9	9	7	12	11	8	5	61
Hampton	2	3	0	1	1	2	1	10
Forest Park	5	3	1	11	2	7	3	32
Morrow	2	7	1	4	2	6	5	27
Ellenwood	2	5	11	3	6	5	1	33
Rex	1	4	1	2	6	2	4	20
Atlanta	1	2	0	4	1	2	2	12
Lake City	0	0	0	0	0	0	1	1
Stockbridge	0	1	0	2	3	3	1	10
College Park	1	1	0	1	3	0	0	6
Conley	2	0	1	2	1	0	1	7
Fayetteville	1	0	0	1	0	0	0	2
Lovejoy	1	0	0	0	0	0	0	1
Unknown	0	5	0	0	0	0	0	5
Total	33	53	32	63	46	54	29	310

*The percent total defines the percent of cases in Clayton County that comes from each city.

TABLE 4. COVID-19 CASES HOSPITALIZATION AND DEATH COUNTS IN CLAYTON COUNTY

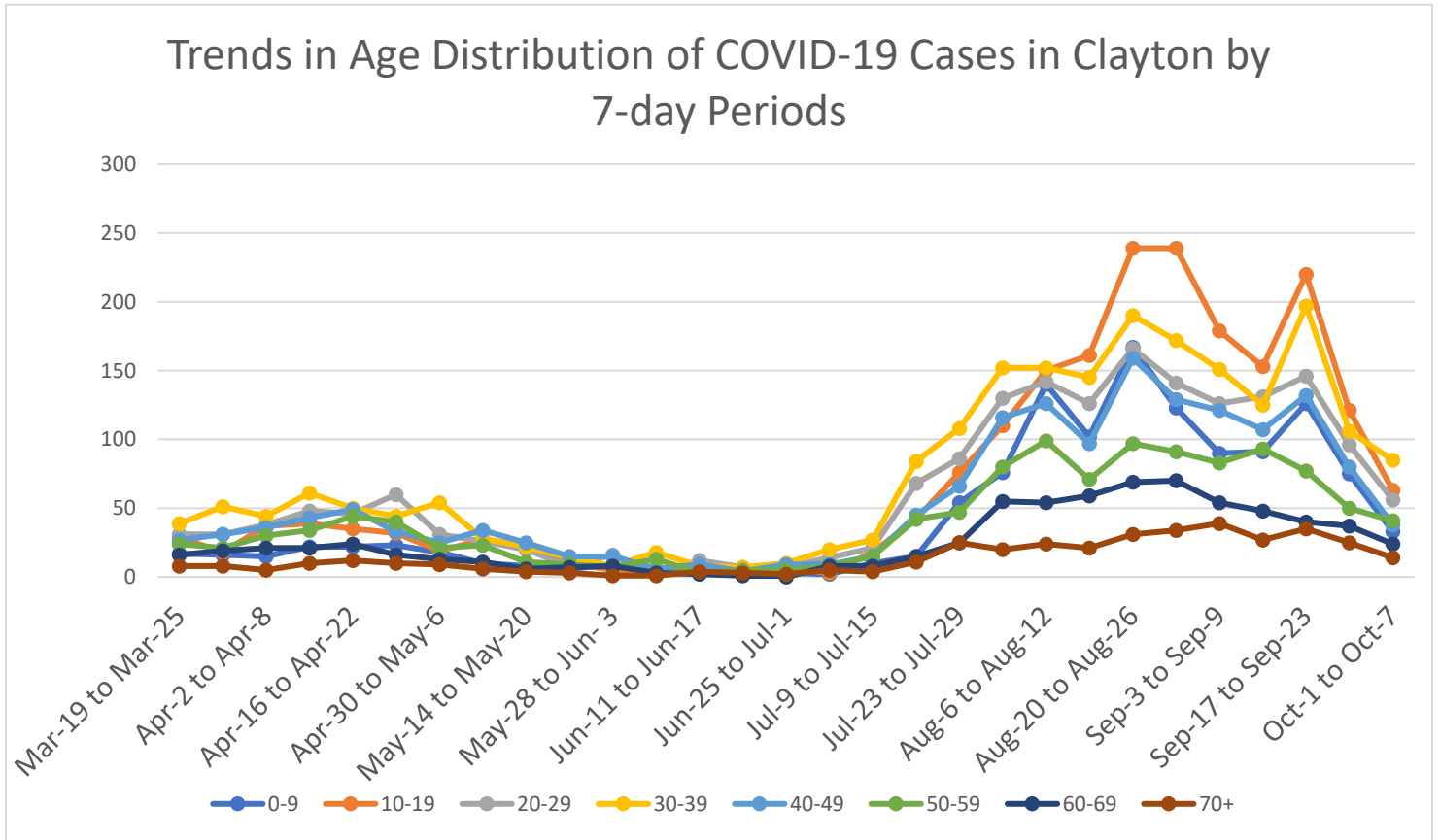
	Previous 14 Days 9/13-9/26	Recent 14 Days 9/27-10/10	% Change
Needed Hospitalization	70	54	-22.9%

	Total Count	% of Cases That Died
Died	646	1.9%

TABLE 5. DEMOGRAPHIC DATA OF COVID-19 CASES IN CLAYTON COUNTY

Demographic	Count	%
Gender		
Female	19282	56.4%
Male	14735	43.1%
Unknown	175	0.5%
Age Group		
0-9	2362	6.9%
10-19	4255	12.5%
20-29	6065	17.8%
30-39	6389	18.7%
40-49	5430	15.9%
50-59	4809	14.1%
60-69	3001	8.79%
70+	1829	5.35%
Race		
Asian	883	2.6%
Black	18880	55.2%
Other	2911	8.5%
White	3492	10.2%
Unknown	8026	23.5%
Ethnicity		
Hispanic/Latino	4066	11.9%
Non-Hispanic/Latino	20121	58.8%
Unknown/Not Specified	10005	29.3%

FIGURE 2. DISTRIBUTION OF POSITIVE CASES BY AGE OVER 7-DAY PERIODS



Graphs shown reflect the number of confirmed cases by age using the date of first positive sample collection. All data reported are preliminary and subject to change.

FIGURE 3. PROPORTION OF COVID-19 CASES BY RACE IN CLAYTON COUNTY

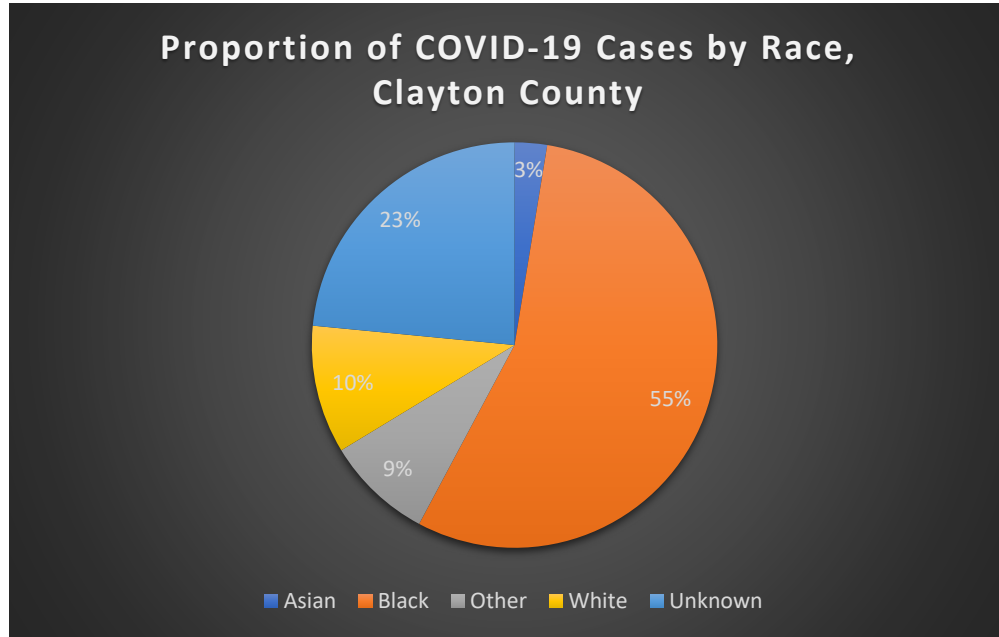


FIGURE 4. PROPORTION OF COVID-19 CASES BY RACE AND ETHNICITY IN CLAYTON COUNTY

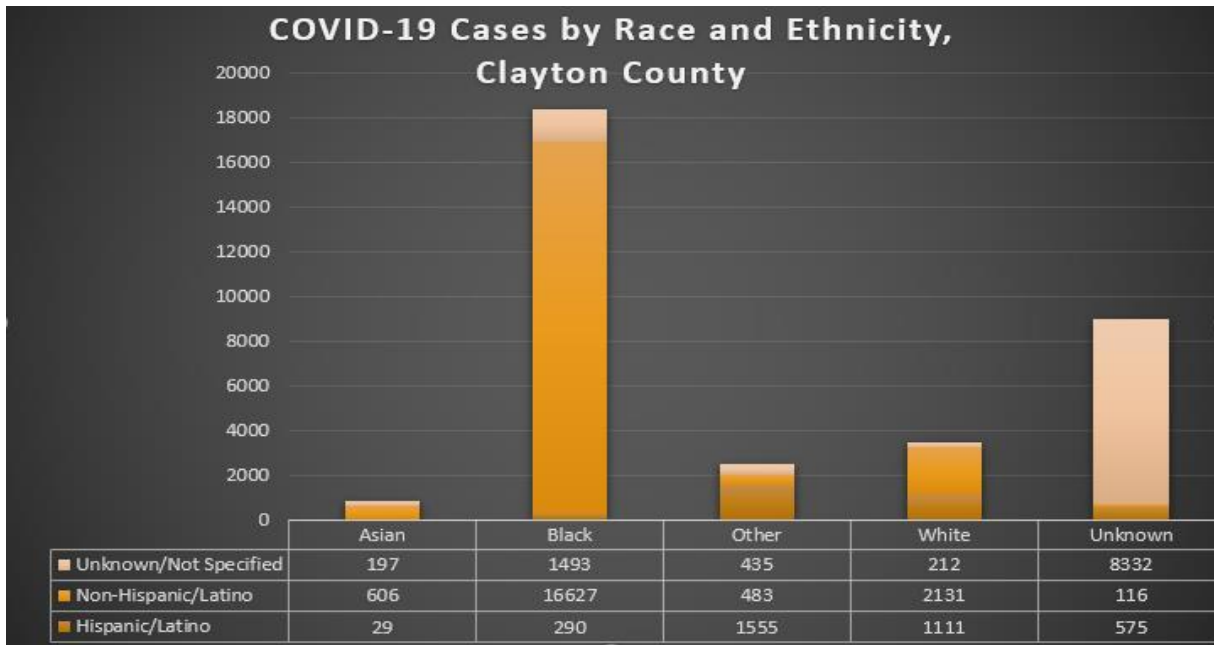


FIGURE 5. PROPORTION OF COVID-19 RELATED DEATHS BY AGE GROUP CLAYTON COUNTY

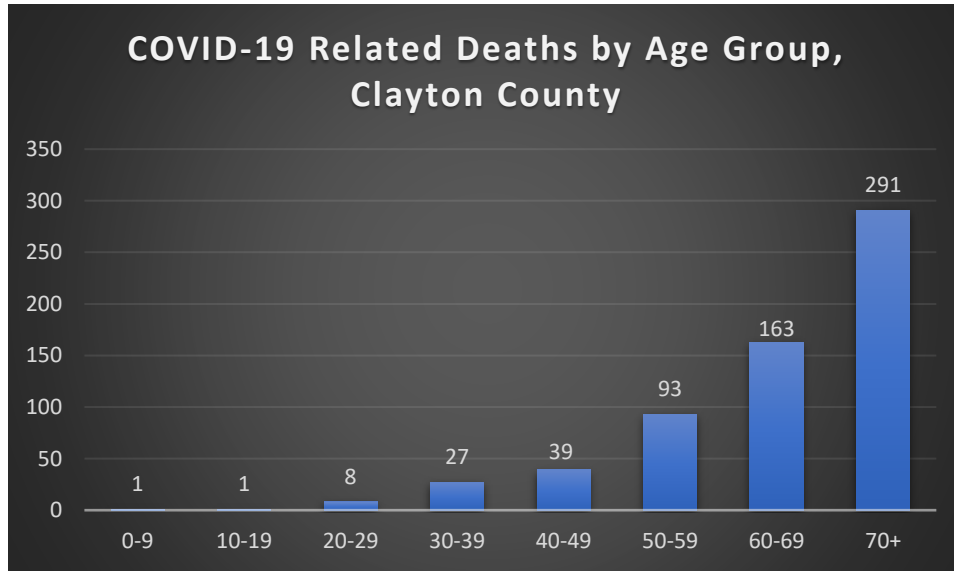


FIGURE 6. PROPORTION OF COVID-19 RELATED DEATHS BY RACE AND ETHNICITY IN CLAYTON COUNTY

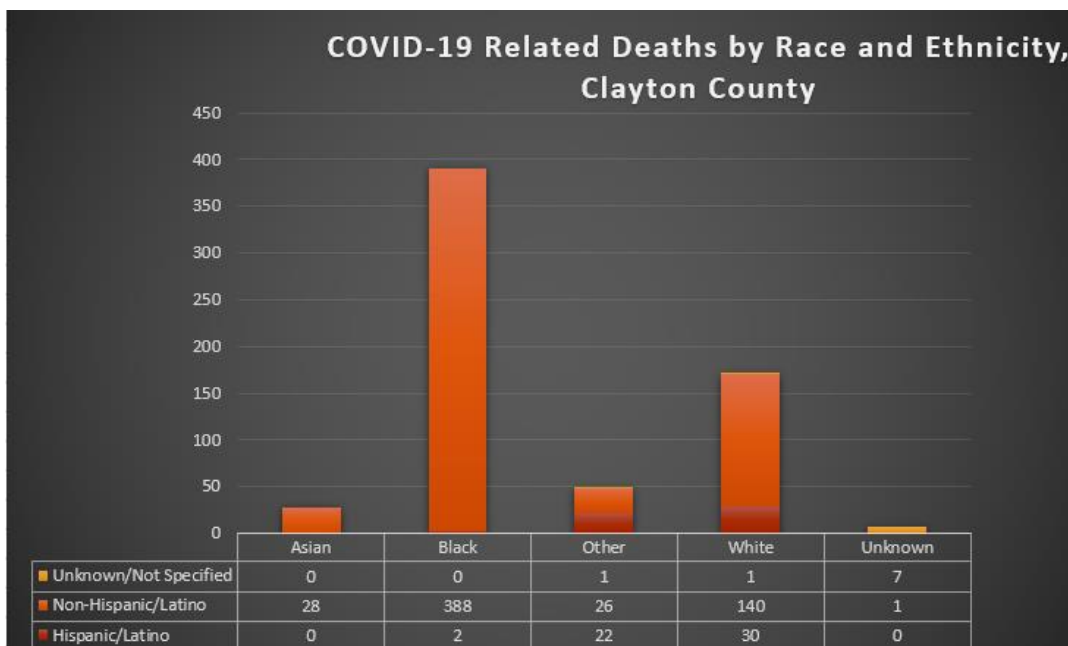




TABLE 6. COVID-19 CASE COUNTS BY ZIP CODE AND CHANGE IN TWO MOST RECENT 14-DAY PERIODS

Zip Code	Previous 10/03	Current 10/10	Percent of Total	Previous 14 Days 9/13-9/26	Recent 14 Days 9/27-10/10	Percent Change in 14-Day Periods
All Clayton	33311	33617	100.0%	1595	767	-52%
30236	5620	5659	16.8%	266	101	-62%
30238	4672	4715	14.0%	250	109	-56%
30274	4193	4227	12.6%	197	89	-55%
30260	3056	3083	9.2%	122	58	-52%
30297	3049	3083	9.2%	179	75	-58%
30296	2843	2869	8.5%	138	58	-58%
30273	2118	2138	6.4%	86	71	-17%
30294	2057	2090	6.2%	79	63	-20%
30349	2014	2032	6.0%	115	52	-55%
30228	1950	1960	5.8%	95	26	-73%
30288	656	663	2.0%	21	17	-19%
30281	493	503	1.5%	23	22	-4%
30215	232	234	0.7%	11	6	-45%
30250	177	177	0.5%	2	14	600%
30237	49	50	0.1%	2	1	-50%
30326	20	20	0.1%	0	0	NA
30287	11	12	0.0%	1	1	0%
30328	9	9	0.0%	0	0	NA
30298	11	11	0.0%	0	0	NA

Note: Data cleaning may lead to reassignment of cases from one territory to another based on corrected addresses which may appear as “decreases” when compared to previous counts. Zip codes with fewer than 5 cases reported were omitted from the table.

FIGURE 7. CLAYTON COUNTY VACCINE NUMBERS AS OF 10/10/2021

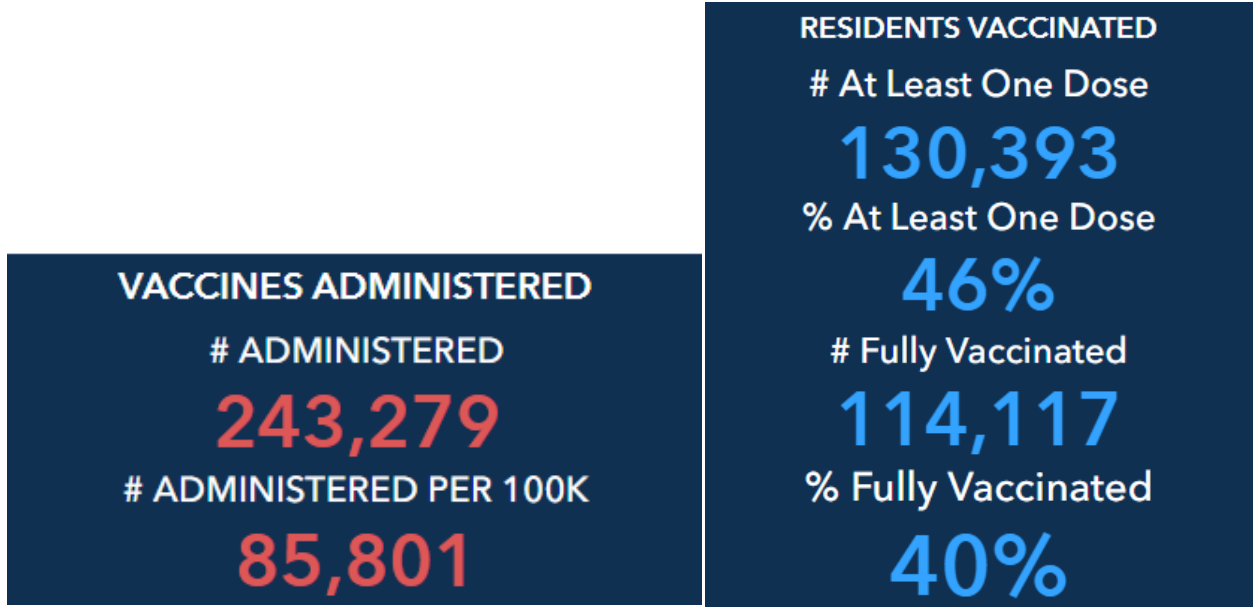


FIGURE 8. PROPORTION OF VACCINE RECIPIENTS WITH AT LEAST ONE DOSE BY SEX IN CLAYTON COUNTY

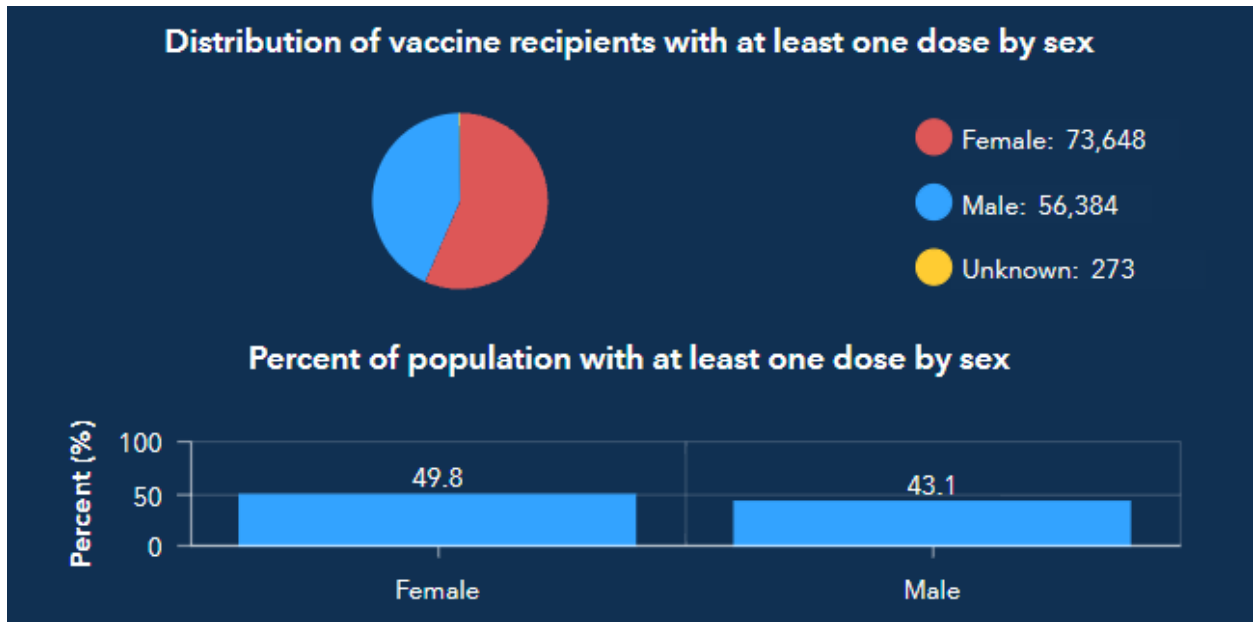


FIGURE 9. PROPORTION OF VACCINE RECIPIENTS WITH AT LEAST ONE DOSE BY AGE IN CLAYTON COUNTY

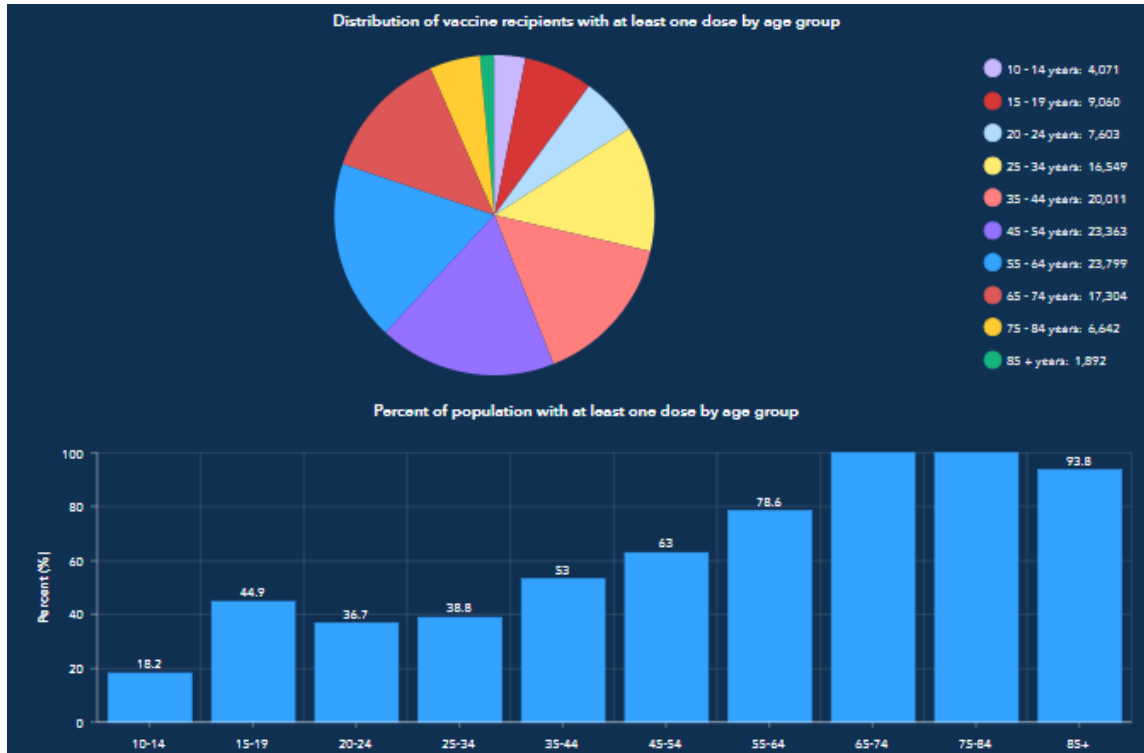


FIGURE 10. PROPORTION OF VACCINE RECIPIENTS WITH AT LEAST ONE DOSE BY ETHNICITY IN CLAYTON COUNTY

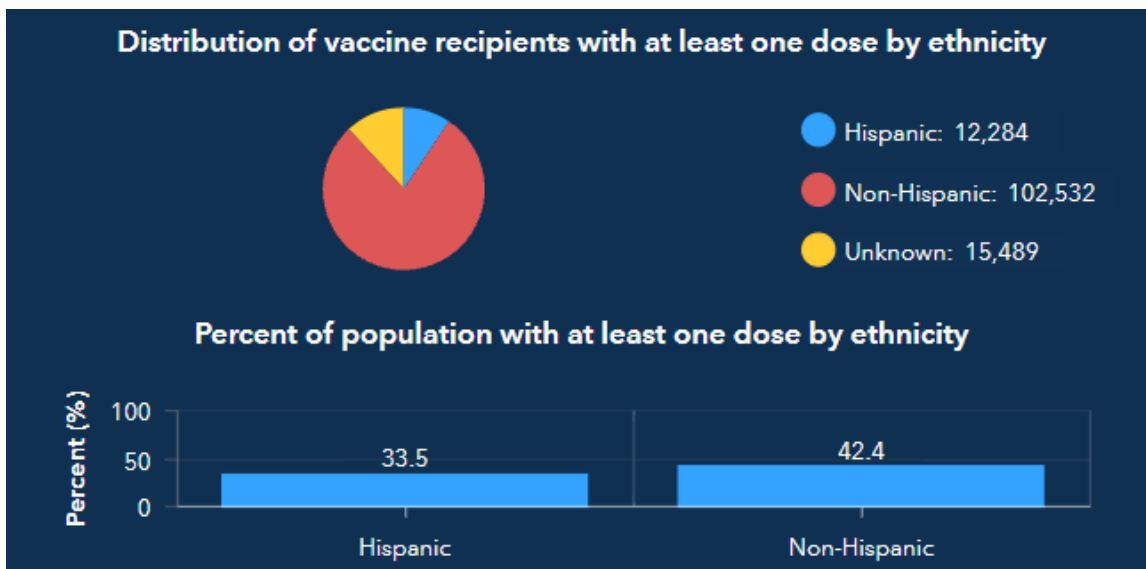


FIGURE 11. PROPORTION OF VACCINE RECIPIENTS WITH AT LEAST ONE DOSE BY RACE IN CLAYTON COUNTY

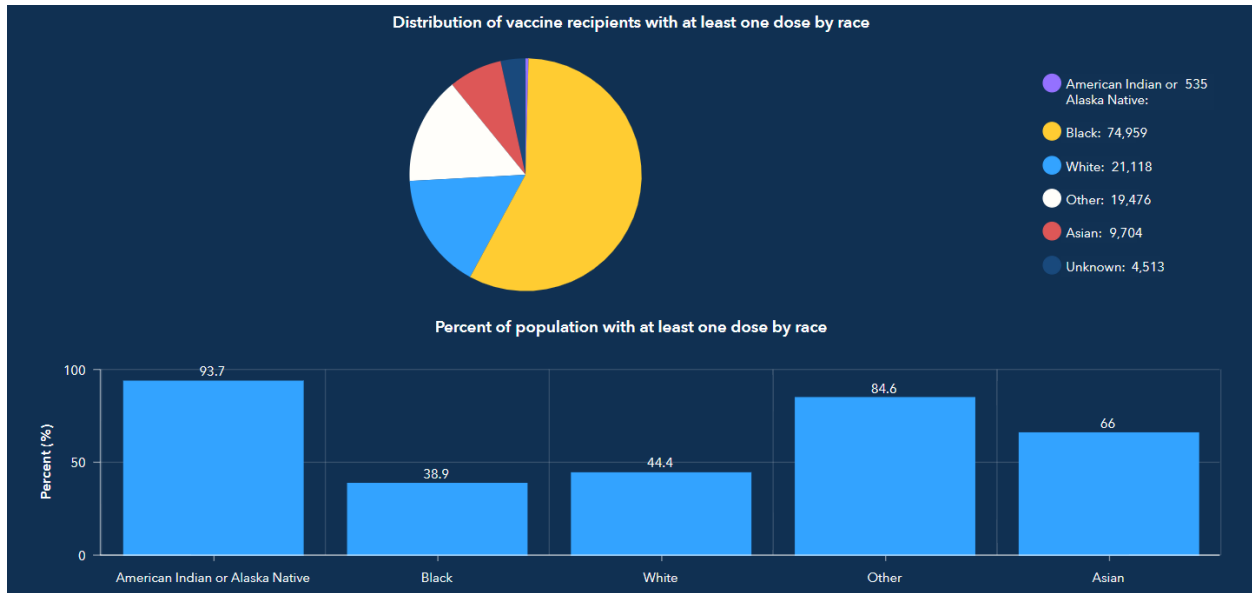


FIGURE 12. CLAYTON COUNTY BREAKTHROUGH CASES

