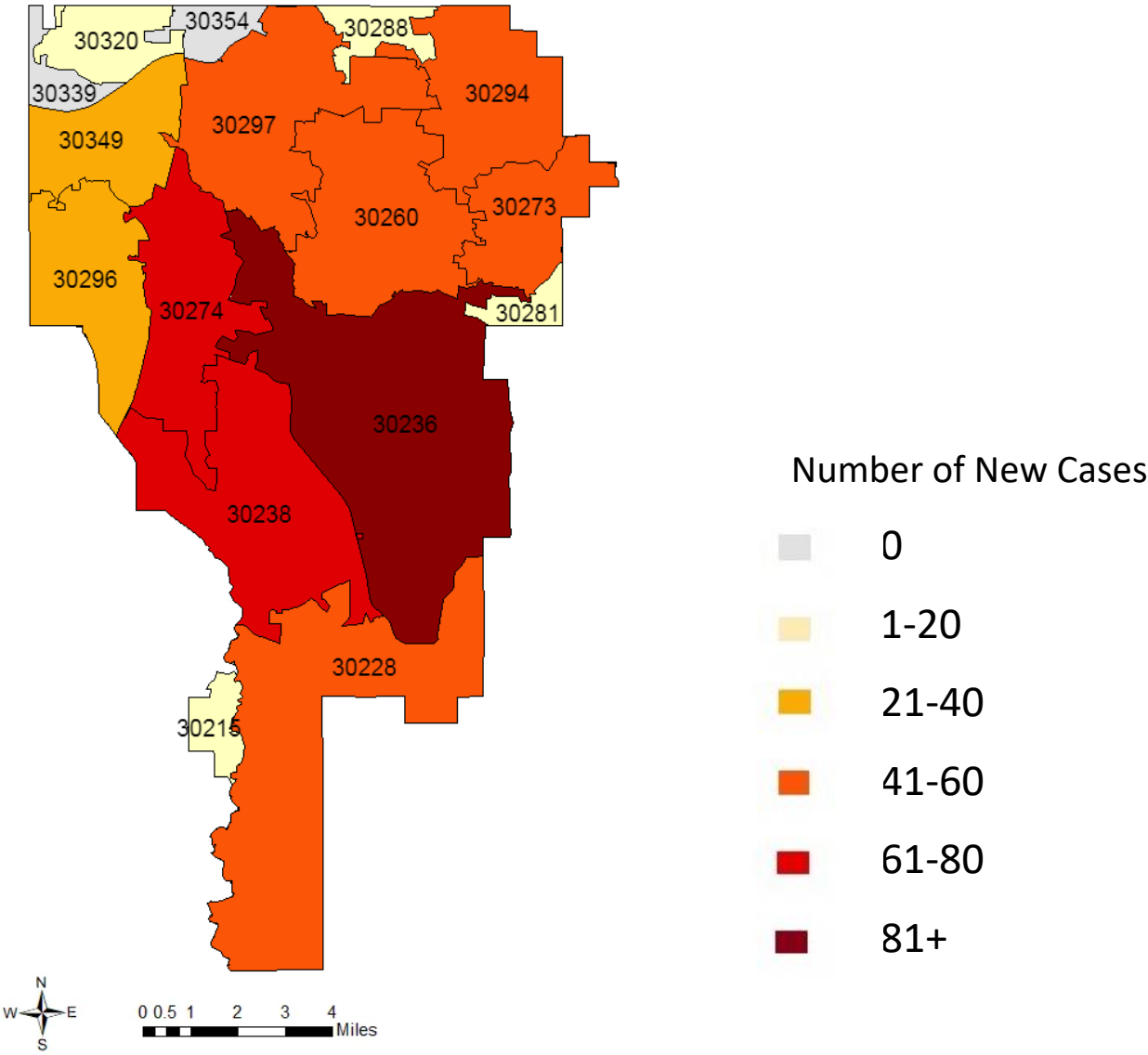


COVID-19 SUMMARY REPORT FOR CLAYTON COUNTY

Clayton County, Georgia
From 12/13- 12/19, 2021



Created: December 20, 2021
Source: Clayton County Health District and
Georgia Department of Public Health, State
Electronic Notifiable Disease Surveillance System



- As of December 19, 2021, Clayton County has 36,509 cases of 2019 Novel Coronavirus (COVID-19) and 737 confirmed deaths.
- There were 604 new Positive COVID-19 tests reported in Clayton County from 12/13 -12/19.
- Clayton County accounts for 2.8% of the total cases in Georgia.
- 4.8% of the positive cases in Clayton County from 12/13- 12/19 were hospitalized.
- 0.3% of positive cases in Clayton County from 12/13- 12/19 died.
- The average percent of Positive PCR tests in Clayton County over the last 7 days is 7.4%.
- The total number of confirmed cases (PCR) per 100,000 people in Clayton County is 12,019.
- The total number of cases (PCR and Antigen) per 100,000 people in Clayton County is 13,502.
- In Clayton County 135,384 residents (48%) have received at least one dose of the COVID-19 Vaccine and 121,493 (43%) have been fully vaccinated.

TABLE 1. CUMULATIVE COVID-19 CASES AND PERCENT CHANGE FOR CLAYTON COUNTY

	Dec 13	Dec 14	Dec 15	Dec 16	Dec 17	Dec 18	Dec 19
Clayton County	35995	36041	36152	36222	36348	36479	36575
% Change	0.07%	0.13%	0.31%	0.19%	0.35%	0.36%	0.26%

FIGURE 1. DAILY NEW COVID-19 POSITIVE INDIVIDUALS FOR CLAYTON COUNTY OVER 7-DAY PERIOD

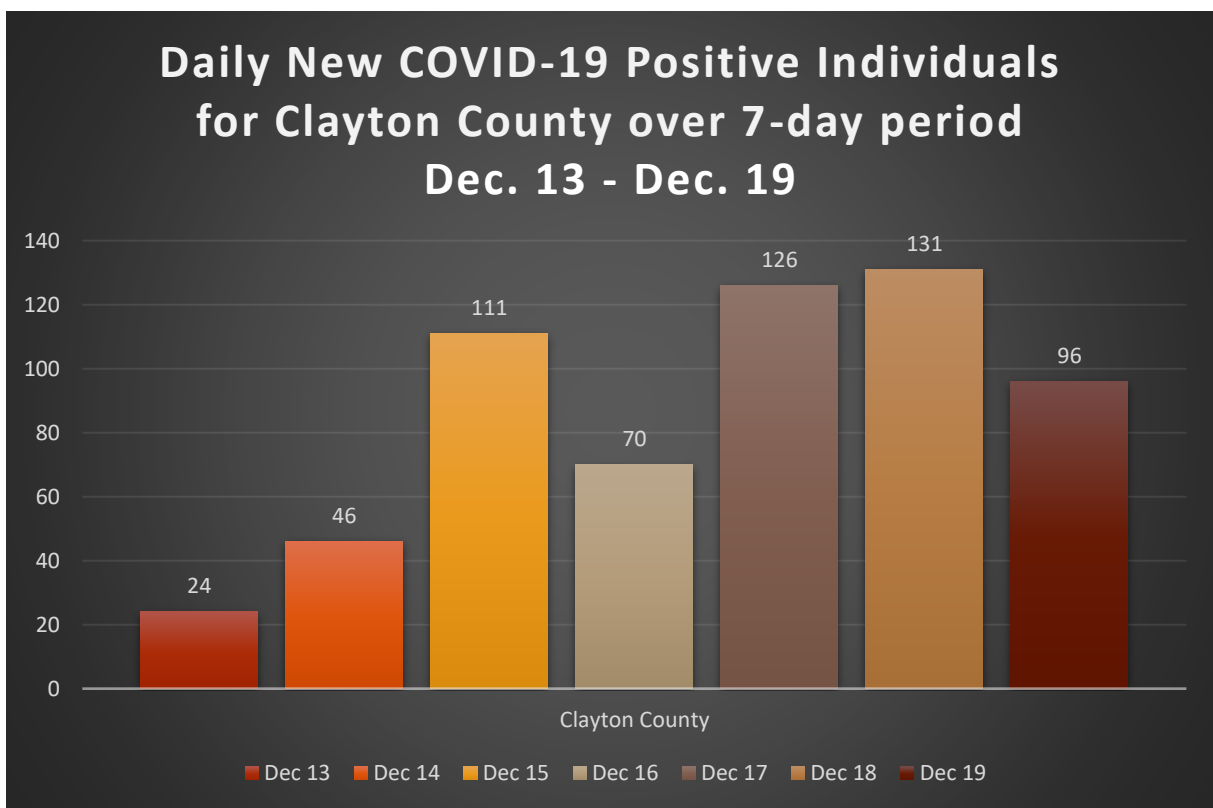


TABLE 2. CUMULATIVE COVID-19 CASE COUNTS BY CITY AND %TOTAL OF CLAYTON COUNTY CASES

City	Dec 13	Dec 14	Dec 15	Dec 16	Dec 17	Dec 18	Dec 19	% Total*
Jonesboro	11042	11057	11077	11109	11145	11186	11210	30.6%
Riverdale	7615	7627	7661	7664	7680	7698	7718	21.1%
Hampton	2090	2091	2103	2109	2119	2130	2138	5.8%
Forest Park	3328	3332	3339	3345	3355	3368	3371	9.2%
Morrow	3118	3121	3128	3130	3142	3153	3162	8.6%
Ellenwood	2224	2226	2234	2241	2254	2265	2271	6.2%
Rex	2321	2322	2329	2336	2347	2355	2366	6.5%
Atlanta	1311	1312	1319	1320	1326	1332	1340	3.7%
Lake City	201	201	201	202	203	203	204	0.6%
Stockbridge	551	553	553	553	554	556	557	1.5%
College Park	882	885	885	886	887	891	892	2.4%
Conley	698	700	706	708	711	713	715	2.0%
Fayetteville	254	254	256	258	263	267	268	0.7%
Lovejoy	206	206	206	206	206	206	207	0.6%
Unknown City	154	154	155	155	156	156	156	0.43%
Total	35995	36041	36152	36222	36348	36479	36575	100%

TABLE 3. DAILY NUMBER OF NEW COVID-19 CASES BY CITY

City	Dec 13	Dec 14	Dec 15	Dec 16	Dec 17	Dec 18	Dec 19	Total
Jonesboro	8	15	20	32	36	41	24	176
Riverdale	4	12	34	3	16	18	20	107
Hampton	4	1	12	6	10	11	8	52
Forest Park	2	4	7	6	10	13	3	45
Morrow	2	3	7	2	12	11	9	46
Ellenwood	0	2	8	7	13	11	6	47
Rex	1	1	7	7	11	8	11	46
Atlanta	1	1	7	1	6	6	8	30
Lake City	0	0	0	1	1	0	1	3
Stockbridge	1	2	0	0	1	2	1	7
College Park	1	3	0	1	1	4	1	11
Conley	0	2	6	2	3	2	2	17
Fayetteville	0	0	2	2	5	4	1	14
Lovejoy	0	0	0	0	0	0	1	1
Unknown	0	0	1	0	1	0	0	2
Total	24	46	111	70	126	131	96	604

*The percent total defines the percent of cases in Clayton County that comes from each city.

TABLE 4. COVID-19 CASES HOSPITALIZATION AND DEATH COUNTS IN CLAYTON COUNTY

	Previous 14 Days 11/22-12/05	Recent 14 Days 12/06-12/19	% Change
Needed Hospitalization	21	41	95.2%

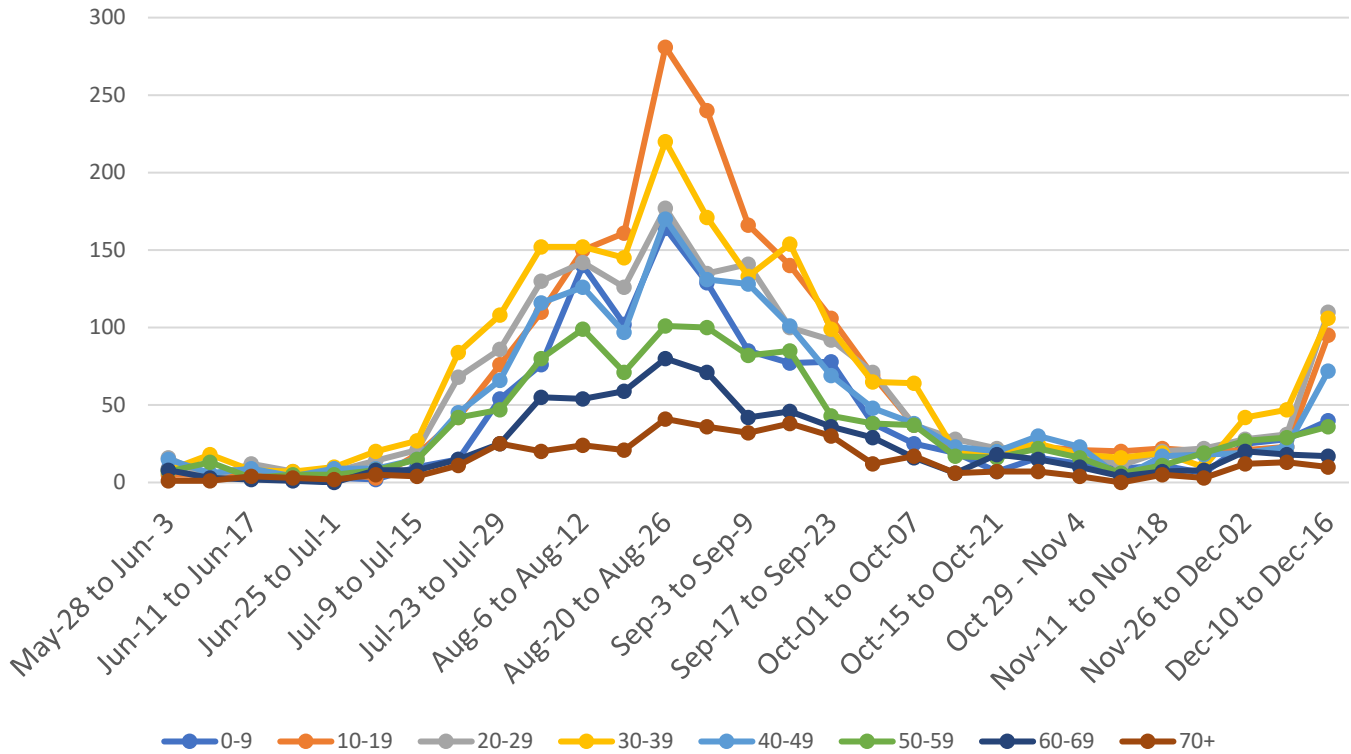
	Total Count	% of Cases That Died
Died	737	2.0%

TABLE 5. DEMOGRAPHIC DATA OF COVID-19 CASES IN CLAYTON COUNTY

Demographics	Count	%
Gender		
Female	20698	56.6%
Male	15723	43.0%
Unknown	154	0.4%
Age Group		
0-9	2596	7.1%
10-19	4645	12.7%
20-29	6510	17.8%
30-39	6874	18.8%
40-49	5774	15.8%
50-59	5077	13.9%
60-69	3152	8.62%
70+	1920	5.25%
Race		
Asian	948	2.6%
Black	21450	58.6%
Other	3037	8.3%
White	3929	10.7%
Unknown	7211	19.7%
Ethnicity		
Hispanic/Latino	4547	12.4%
Non-Hispanic/Latino	23044	63.0%
Unknown/Not Specified	8984	24.6%

FIGURE 2. DISTRIBUTION OF POSITIVE CASES BY AGE OVER 7-DAY PERIODS

Trends in Age Distribution of COVID-19 Cases in Clayton by 7-day Periods



Graphs shown reflect the number of confirmed cases by age using the date of first positive sample collection. All data reported are preliminary and subject to change.

FIGURE 3. PROPORTION OF COVID-19 CASES BY RACE IN CLAYTON COUNTY

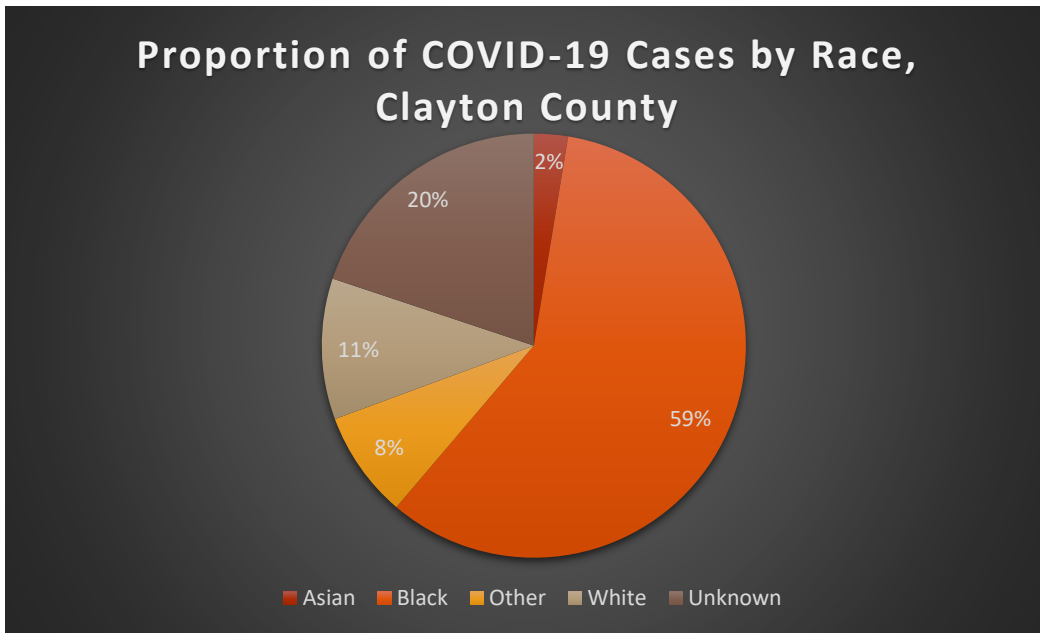
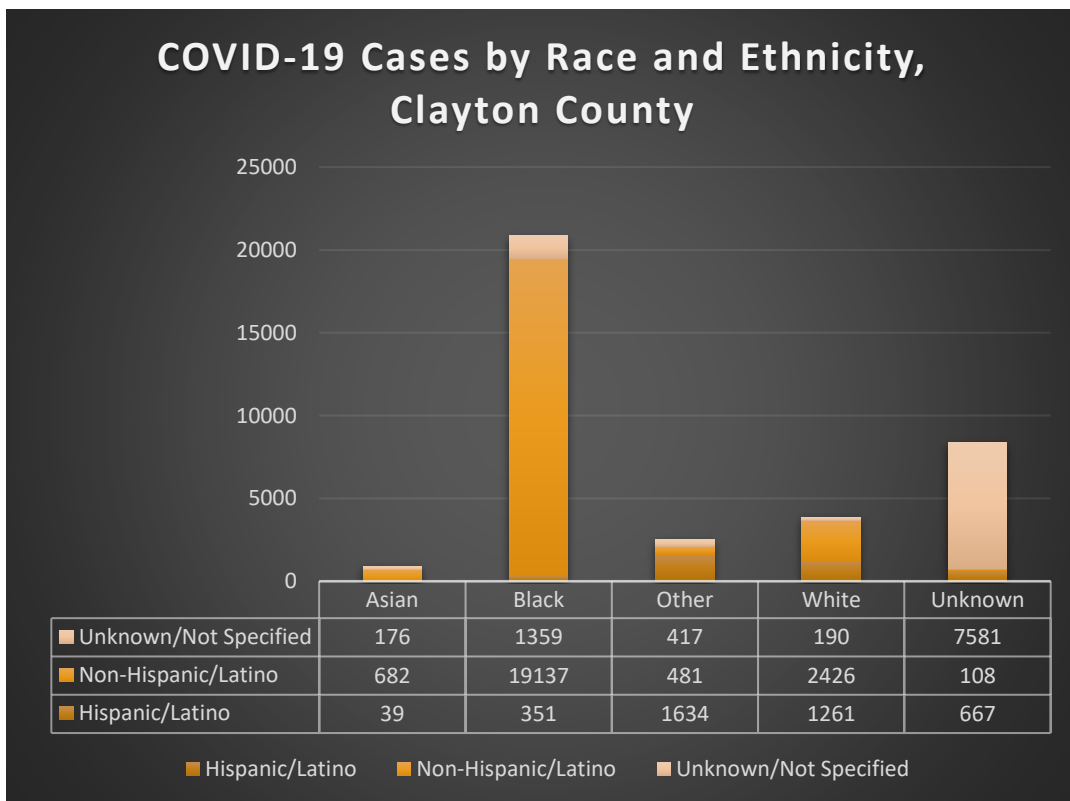
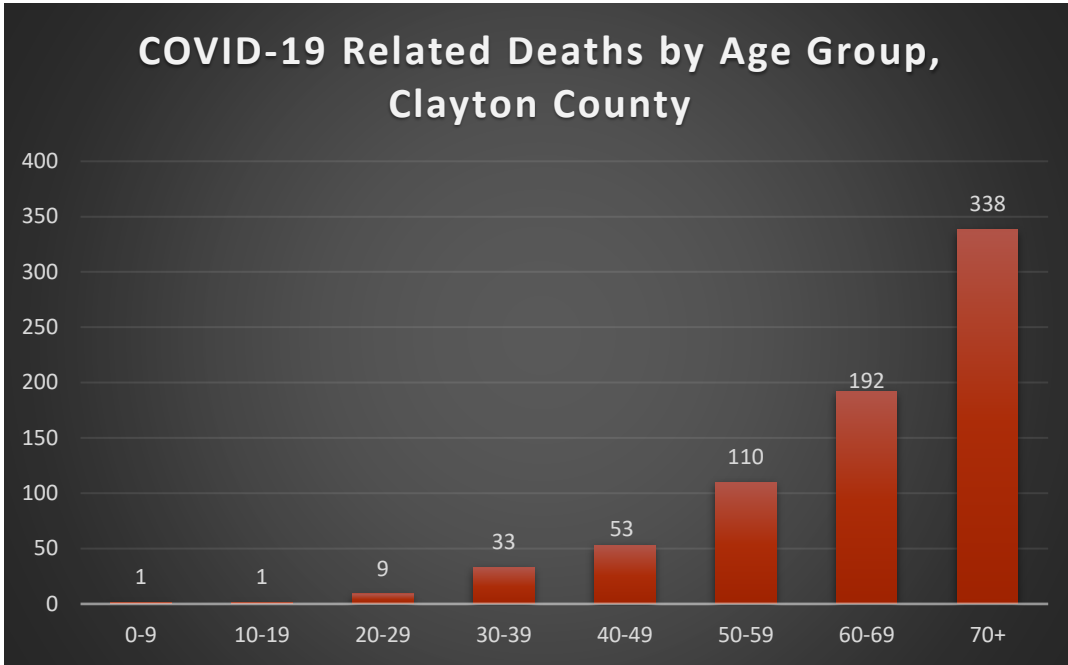


FIGURE 4. COVID-19 CASES BY RACE AND ETHNICITY IN CLAYTON COUNTY



**FIGURE 5. COVID-19 RELATED DEATHS BY AGE GROUP
CLAYTON COUNTY**



**FIGURE 6. COVID-19 RELATED DEATHS BY RACE AND
ETHNICITY IN CLAYTON COUNTY**

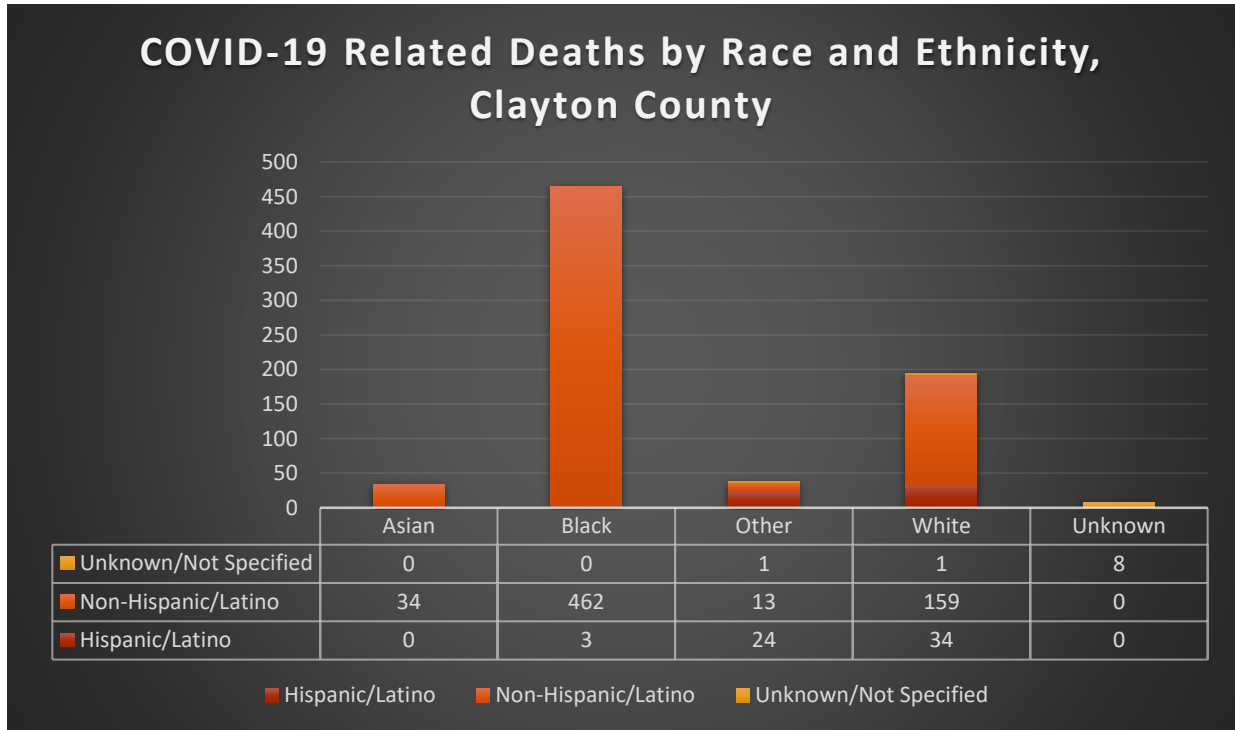


TABLE 6. COVID-19 CASE COUNTS BY ZIP CODE AND CHANGE IN TWO MOST RECENT 14-DAY PERIODS

Zip Code	Previous 12/12	Current 12/19	Percent of Total	Previous 14 Days 11/22-12/05	Recent 14 Days 12/06-12/19	Percent Change in 14-Day Periods
All Clayton	35838	36441	100.0%	265	866	227%
30236	5948	6046	16.6%	38	132	247%
30238	5003	5079	13.9%	29	109	276%
30274	4555	4622	12.7%	37	125	238%
30260	3296	3345	9.2%	17	67	294%
30297	3329	3375	9.3%	49	72	47%
30296	3034	3074	8.4%	20	57	185%
30273	2308	2354	6.5%	19	63	232%
30294	2216	2263	6.2%	15	60	300%
30349	2154	2192	6.0%	10	50	400%
30228	2101	2153	5.9%	15	70	367%
30288	698	715	2.0%	0	21	2100%
30281	548	555	1.5%	5	13	160%
30215	253	267	0.7%	2	16	700%
30250	187	188	0.5%	1	2	100%
30237	55	56	0.2%	3	2	-33%
30326	20	20	0.1%	0	0	NA
30287	13	13	0.0%	0	0	NA
30328	10	10	0.0%	1	0	-100%
30298	12	12	0.0%	0	0	NA

Note: Data cleaning may lead to reassignment of cases from one territory to another based on corrected addresses which may appear as “decreases” when compared to previous counts. Zip codes with fewer than 5 cases reported were omitted from the table.

FIGURE 7: CLAYTON COUNTY VACCINE NUMBERS AS OF 12/19/2021

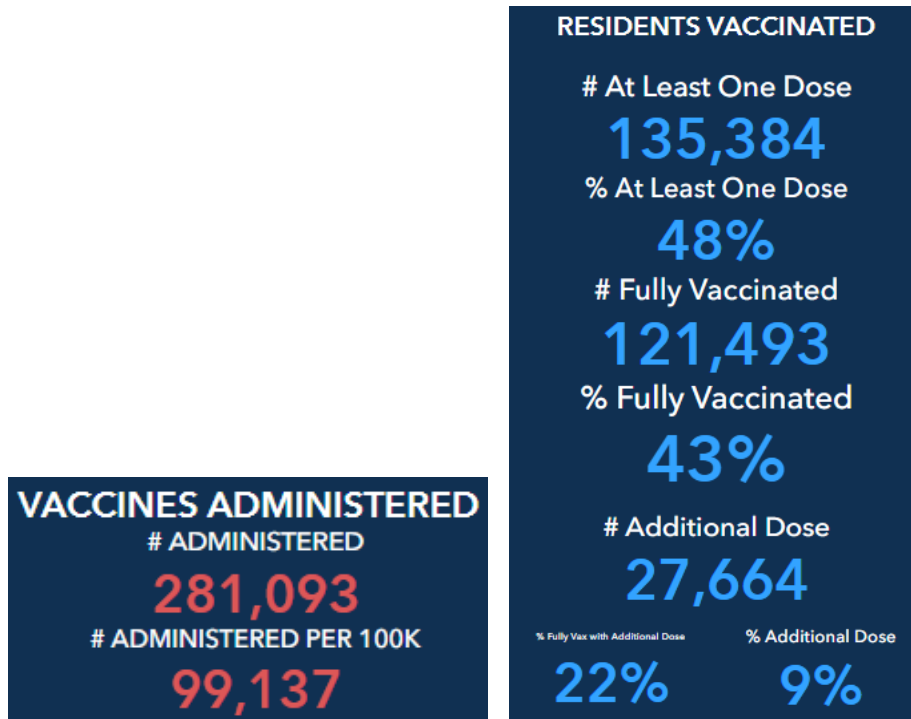


FIGURE 8. PROPORTION OF VACCINE RECIPIENTS WITH AT LEAST ONE DOSE BY SEX IN CLAYTON COUNTY

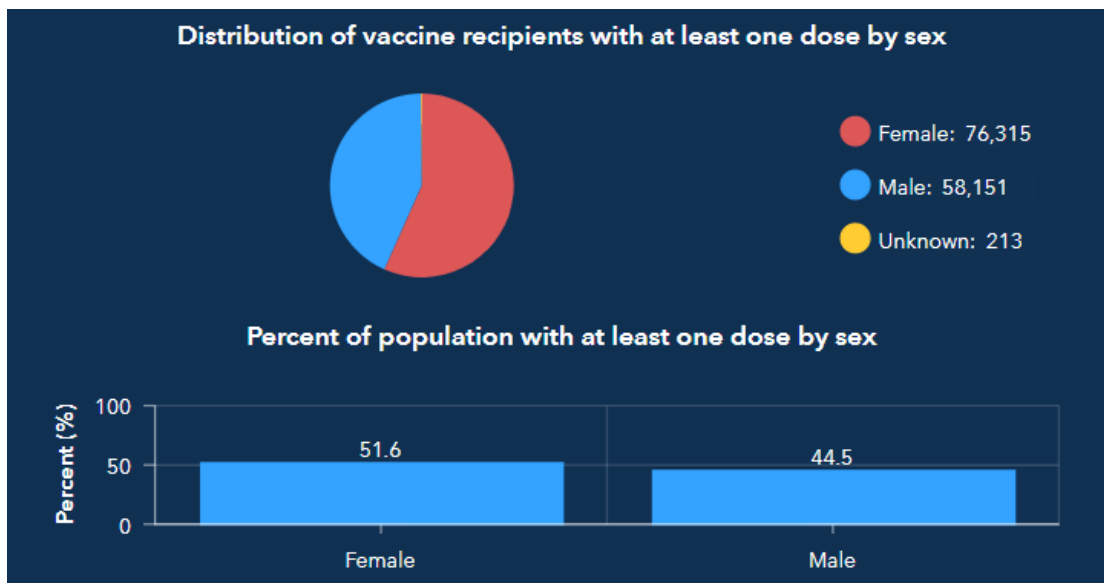


FIGURE 9. PROPORTION OF VACCINE RECIPIENTS WITH AT LEAST ONE DOSE BY AGE IN CLAYTON COUNTY

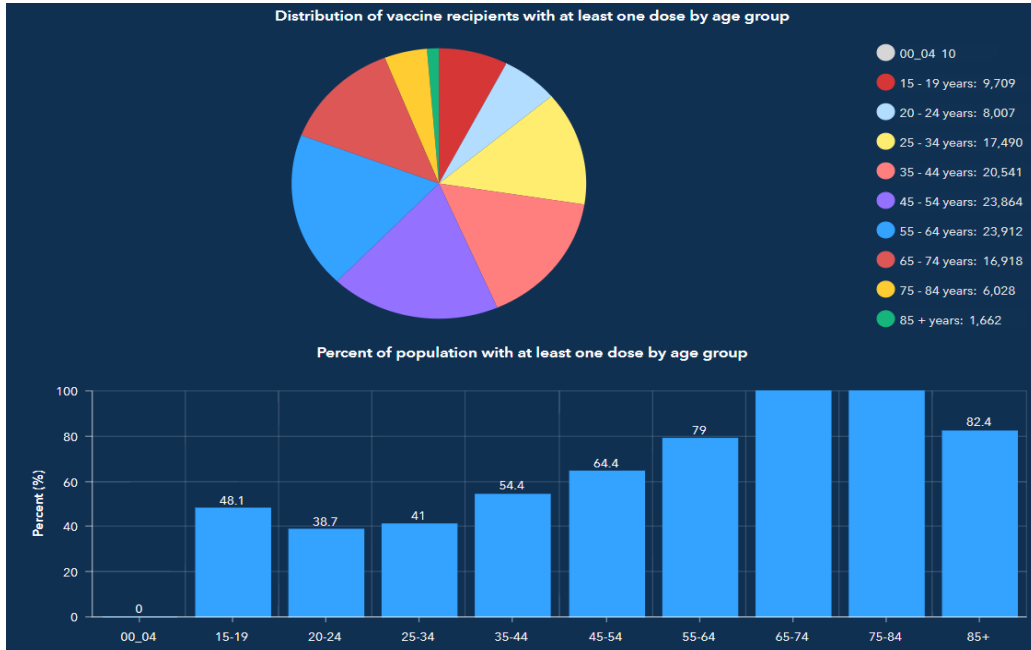


FIGURE 10. PROPORTION OF VACCINE RECIPIENTS WITH AT LEAST ONE DOSE BY ETHNICITY IN CLAYTON COUNTY

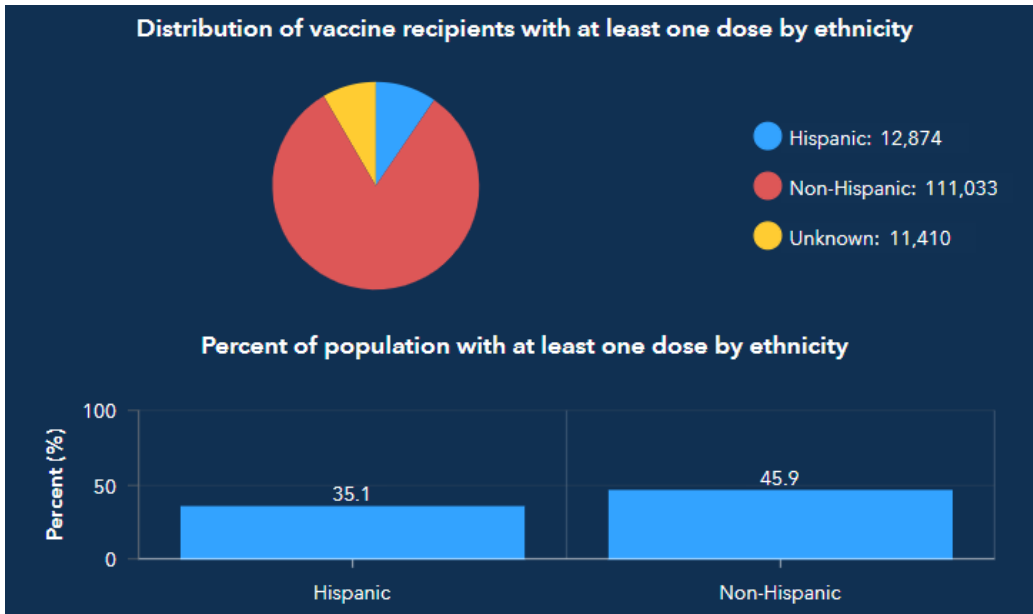


FIGURE 11. PROPORTION OF VACCINE RECIPIENTS WITH AT LEAST ONE DOSE BY RACE IN CLAYTON COUNTY

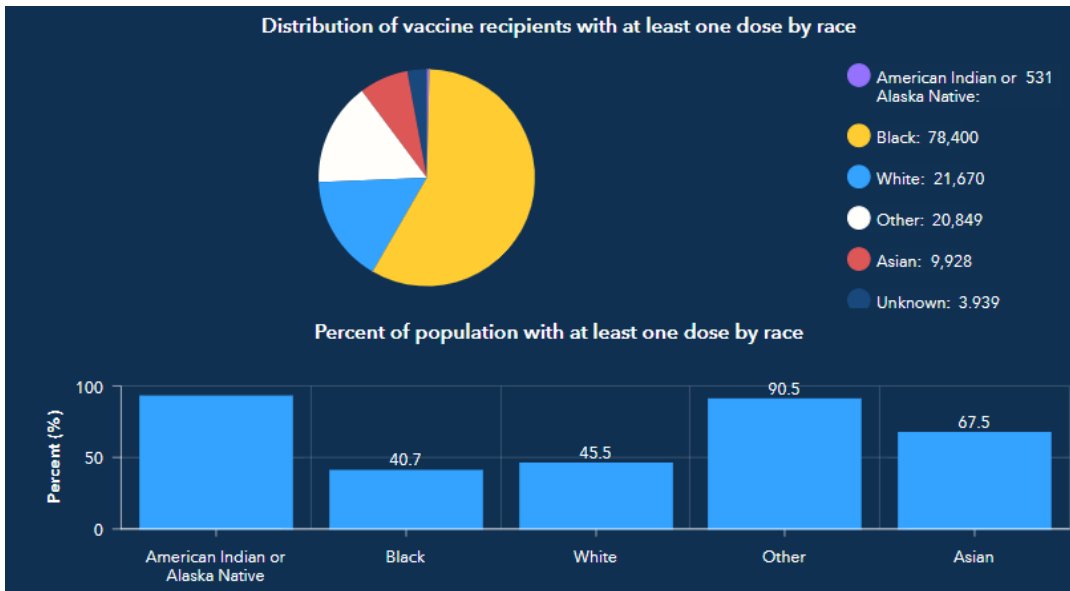


FIGURE 12. CLAYTON COUNTY BREAKTHROUGH CASES (vaccination status not updated due to website data update)

