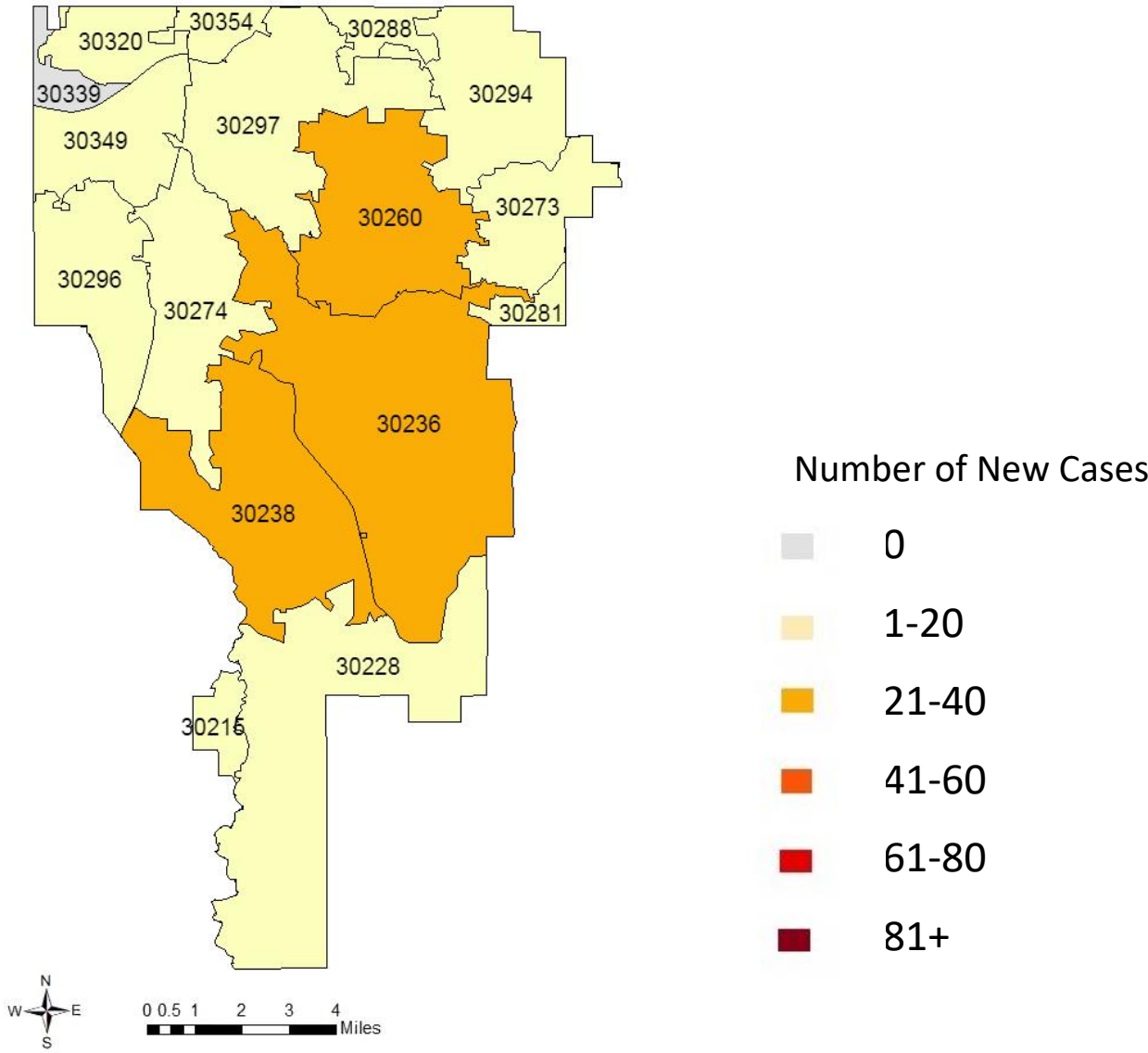


**COVID-19 SUMMARY REPORT FOR CLAYTON COUNTY**

**Clayton County, Georgia  
From 2/14– 2/20/2022**



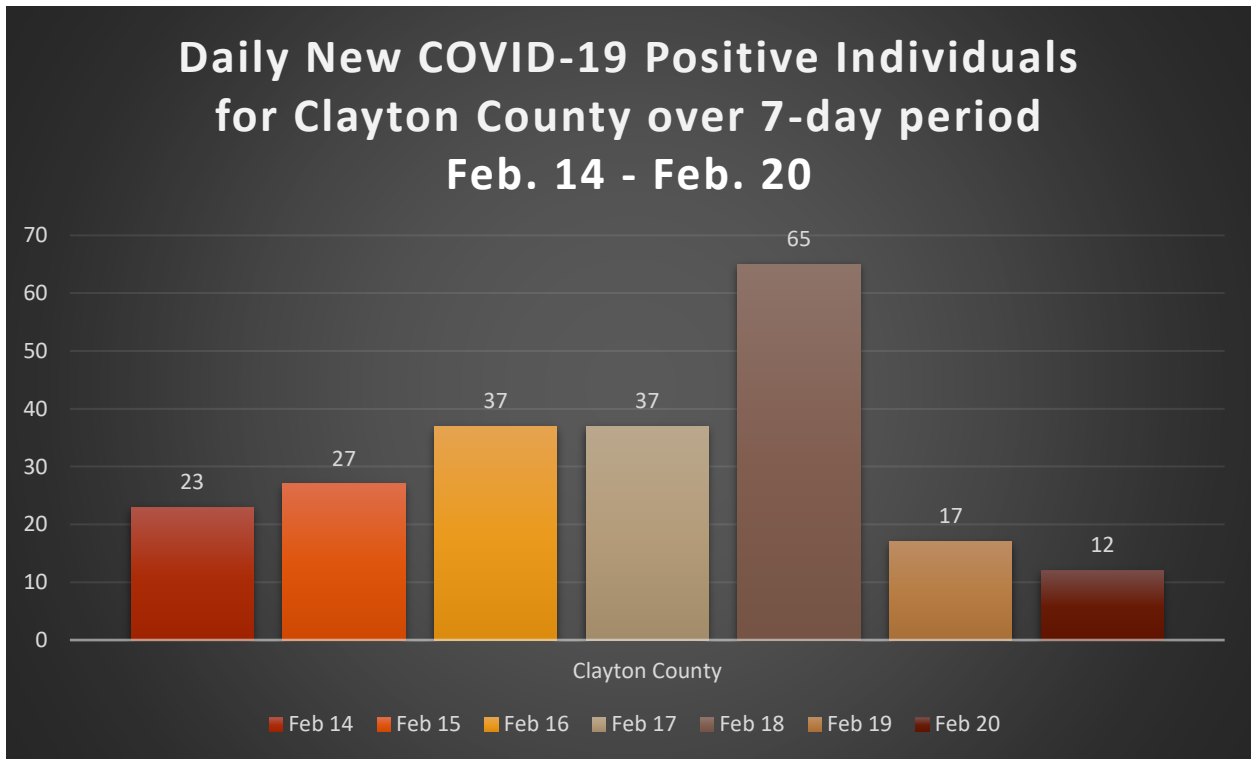
Created: February 21, 2022  
Source: Clayton County Health District and Georgia Department of Public Health, State Electronic Notifiable Disease Surveillance System

- As of February 20, 2022, Clayton County has 56,787 cases of 2019 Novel Coronavirus (COVID-19) and 823 confirmed deaths.
- There were 218 new Positive COVID-19 tests reported in Clayton County from 2/14-02/20.
- Clayton County accounts for 3.0% of the total cases in Georgia.
- 6.4% of the positive cases in Clayton County have been hospitalized from 02/14-02/20.
- 6.9% of positive cases in Clayton County have died.
- The average percent of Positive PCR tests in Clayton County over the last 7 days is 6.9%.
- The total number of confirmed cases (PCR) per 100,000 people in Clayton County is 18,713.
- The total number of cases (PCR and Antigen) per 100,000 people in Clayton County is 20,605.
- In Clayton County 142,462 residents (50%) have received at least one dose of the COVID-19 Vaccine and 128,267 (45%) have been fully vaccinated.
- As of February 20, 2022, Clayton County has 46,797 (36%) fully vaccinated individuals that have received an additional dose of vaccine.

**TABLE 1. CUMULATIVE COVID-19 CASES AND PERCENT CHANGE FOR CLAYTON COUNTY**

	Feb 14	Feb 15	Feb 16	Feb 17	Feb 18	Feb 19	Feb 20
Clayton County	56592	56619	56656	56693	56758	56775	56787
% Change	0.04%	0.05%	0.07%	0.07%	0.11%	0.03%	0.02%

**FIGURE 1. DAILY NEW COVID-19 POSITIVE INDIVIDUALS FOR CLAYTON COUNTY OVER 7-DAY PERIOD**



**TABLE 2. CUMULATIVE COVID-19 CASE COUNTS BY CITY AND %TOTAL OF CLAYTON COUNTY CASES**

City	Feb 14	Feb 15	Feb 16	Feb 17	Feb 18	Feb 19	Feb 20	% Total*
Jonesboro	17121	17131	17142	17156	17170	17175	17182	<b>30.3%</b>
Riverdale	12027	12032	12038	12040	12047	12049	12050	<b>21.2%</b>
Hampton	3655	3659	3660	3663	3670	3670	3671	<b>6.5%</b>
Forest Park	5049	5050	5052	5054	5056	5059	5060	<b>8.9%</b>
Morrow	4780	4783	4789	4792	4801	4803	4803	<b>8.5%</b>
Ellenwood	3427	3428	3430	3432	3438	3439	3439	<b>6.1%</b>
Rex	3726	3727	3728	3732	3744	3746	3746	<b>6.6%</b>
Atlanta	2299	2299	2301	2301	2303	2304	2305	<b>4.1%</b>
Lake City	276	276	276	276	276	276	276	<b>0.5%</b>
Stockbridge	826	827	828	829	830	830	831	<b>1.5%</b>
College Park	1319	1320	1324	1325	1325	1325	1325	<b>2.3%</b>
Conley	940	940	940	942	944	944	944	<b>1.7%</b>
Fayetteville	501	501	501	501	502	502	502	<b>0.9%</b>
Lovejoy	219	219	219	220	220	221	221	<b>0.4%</b>
Unknown City	427	427	428	430	432	432	432	<b>0.8%</b>
<b>Total</b>	<b>56592</b>	<b>56619</b>	<b>56656</b>	<b>56693</b>	<b>56758</b>	<b>56775</b>	<b>56787</b>	<b>100%</b>

**TABLE 3. DAILY NUMBER OF NEW COVID-19 CASES BY CITY**

City	Feb 14	Feb 15	Feb 16	Feb 17	Feb 18	Feb 19	Feb 20	Total
Jonesboro	5	10	11	14	14	5	7	<b>66</b>
Riverdale	8	5	6	2	7	2	1	<b>31</b>
Hampton	3	4	1	3	7	0	1	<b>19</b>
Forest Park	4	1	2	2	2	3	1	<b>15</b>
Morrow	0	3	6	3	9	2	0	<b>23</b>
Ellenwood	1	1	2	2	6	1	0	<b>13</b>
Rex	0	1	1	4	12	2	0	<b>20</b>
Atlanta	0	0	2	0	2	1	1	<b>6</b>
Lake City	0	0	0	0	0	0	0	<b>0</b>
Stockbridge	0	1	1	1	1	0	1	<b>5</b>
College Park	1	1	4	1	0	0	0	<b>7</b>
Conley	1	0	0	2	2	0	0	<b>5</b>
Fayetteville	0	0	0	0	1	0	0	<b>1</b>
Lovejoy	0	0	0	1	0	1	0	<b>2</b>
Unknown	0	0	1	2	2	0	0	<b>5</b>
<b>Total</b>	<b>23</b>	<b>27</b>	<b>37</b>	<b>37</b>	<b>65</b>	<b>17</b>	<b>12</b>	<b>218</b>

\*The percent total defines the percent of cases in Clayton County that comes from each city.



**TABLE 4. COVID-19 CASES HOSPITALIZATION AND DEATH COUNTS IN CLAYTON COUNTY**

	Previous 14 Days 1/24-2/06	Recent 14 Days 2/07-2/20	% Change
Needed Hospitalization	64	36	-43.8%

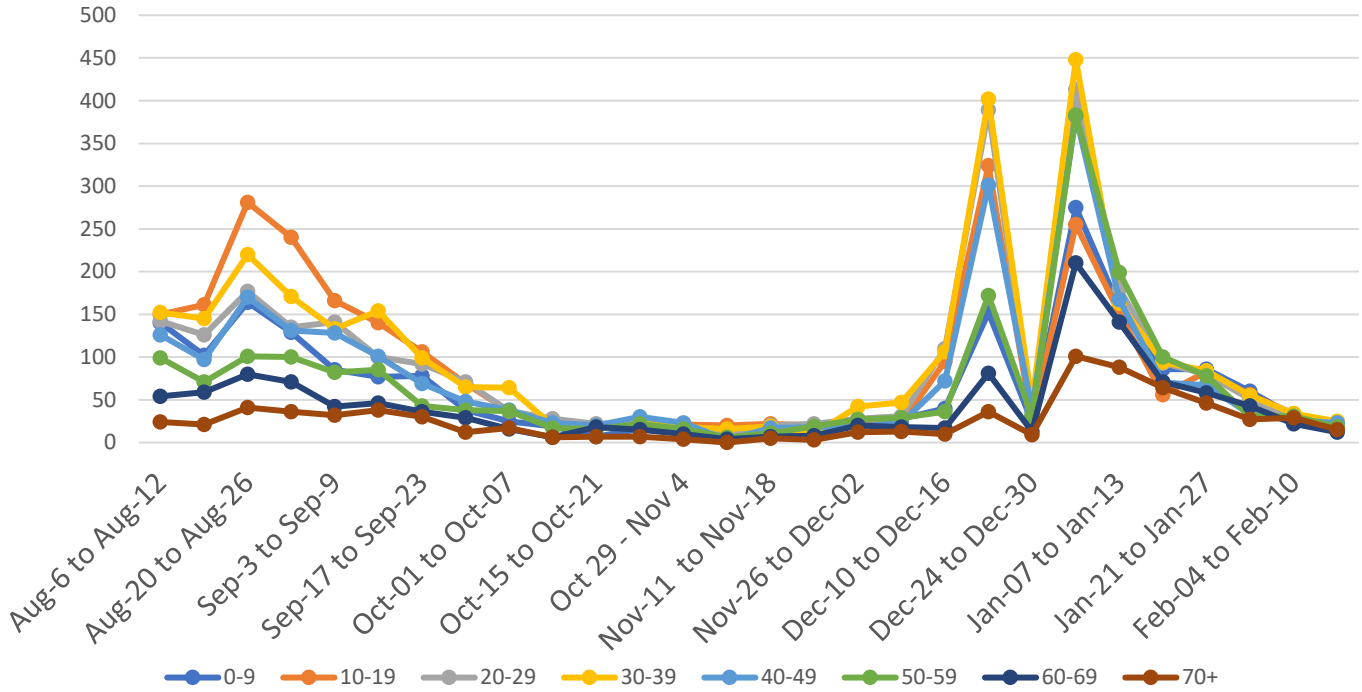
	Total Count	% of Cases That Died
Died	823	1.4%

**TABLE 5. DEMOGRAPHIC DATA OF COVID-19 CASES IN CLAYTON COUNTY**

Demographic	Count	%
<b>Gender</b>		
Female	32600	57.4%
Male	23886	42.1%
Unknown	301	0.5%
<b>Age Group</b>		
0-9	4708	8.3%
10-19	7327	12.9%
20-29	10143	17.9%
30-39	10725	18.9%
40-49	8930	15.7%
50-59	7665	13.5%
60-69	4609	8.12%
70+	2634	4.64%
<b>Race</b>		
Asian	1358	2.4%
Black	31842	56.1%
Other	3936	6.9%
White	5359	9.4%
Unknown	14292	25.2%
<b>Ethnicity</b>		
Hispanic/Latino	6712	11.8%
Non-Hispanic/Latino	33787	59.5%
Unknown/Not Specified	16288	28.7%

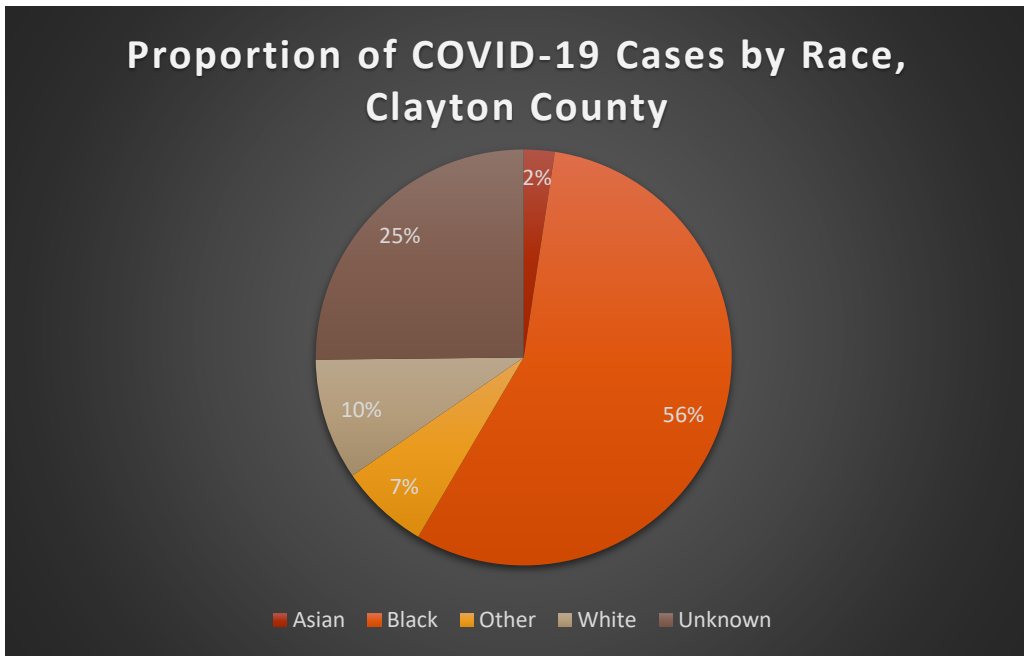
## FIGURE 2. DISTRIBUTION OF POSITIVE CASES BY AGE OVER 7-DAY PERIODS

### Trends in Age Distribution of COVID-19 Cases in Clayton by 7-day Periods

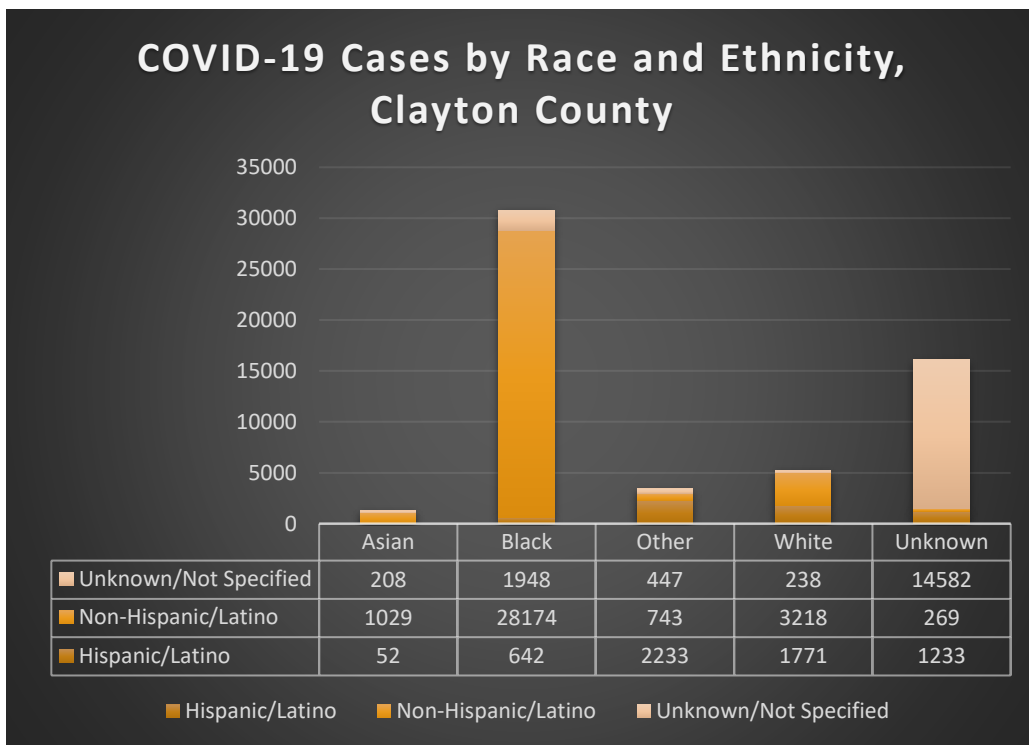


Graphs shown reflect the number of confirmed cases by age using the date of first positive sample collection. All data reported are preliminary and subject to change.

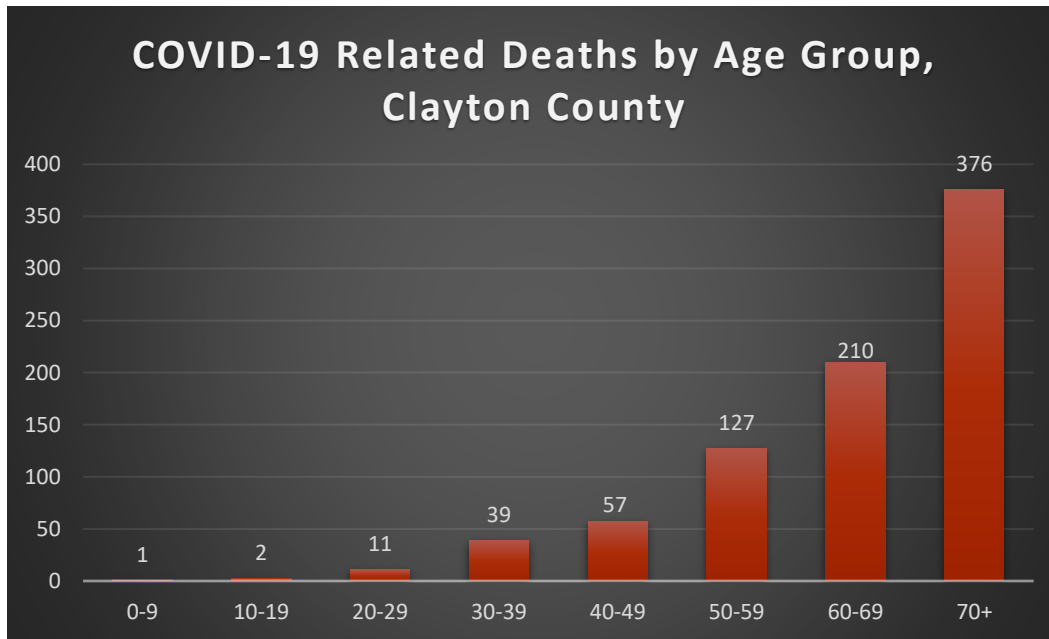
**FIGURE 3. PROPORTION OF COVID-19 CASES BY RACE IN CLAYTON COUNTY**



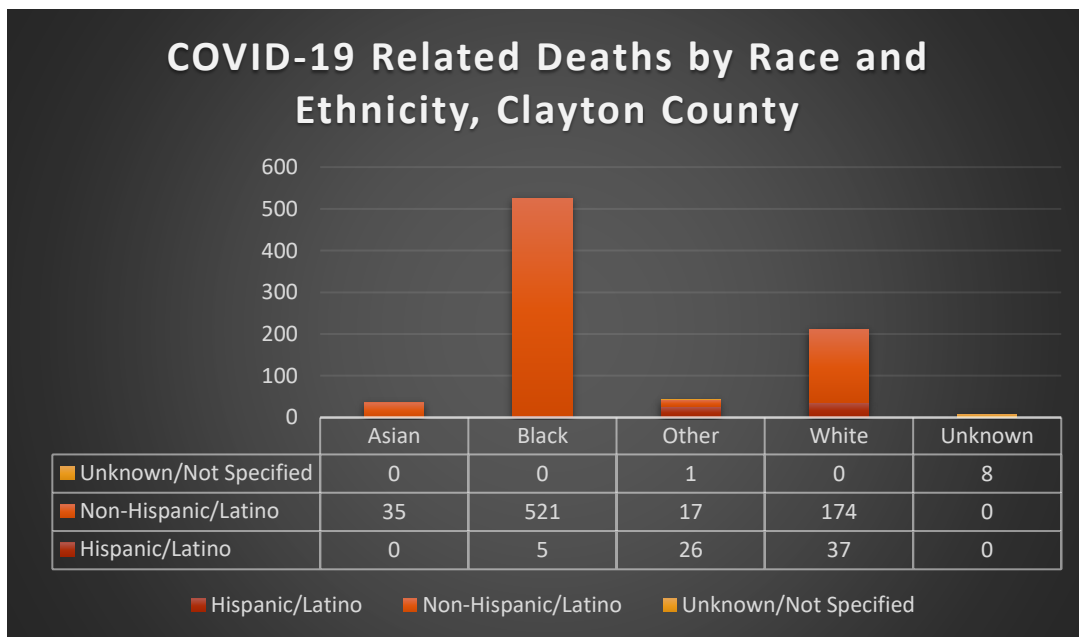
**FIGURE 4. COVID-19 CASES BY RACE AND ETHNICITY IN CLAYTON COUNTY**



**FIGURE 5. COVID-19 RELATED DEATHS BY AGE GROUP  
CLAYTON COUNTY**



**FIGURE 6. COVID-19 RELATED DEATHS BY RACE AND  
ETHNICITY IN CLAYTON COUNTY**





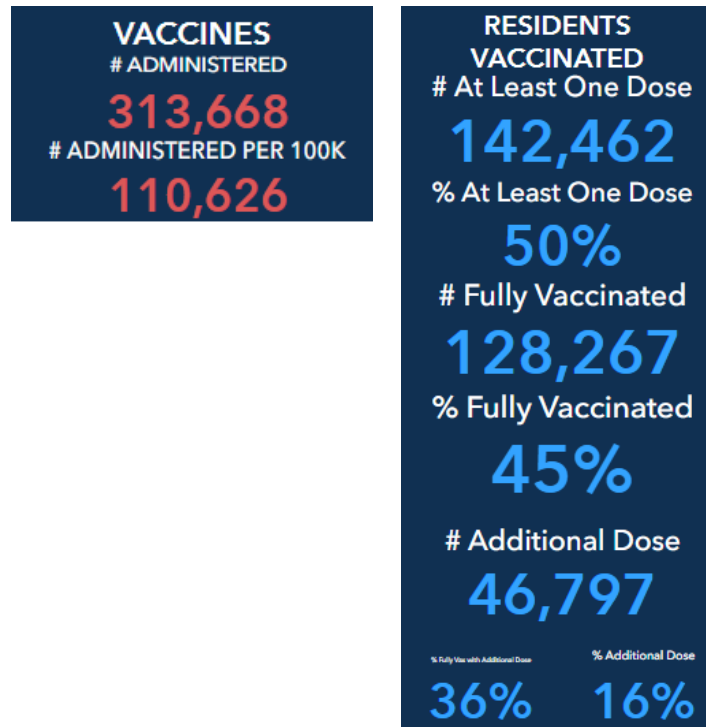


**TABLE 6. COVID-19 CASE COUNTS BY ZIP CODE AND CHANGE IN TWO MOST RECENT 14-DAY PERIODS**

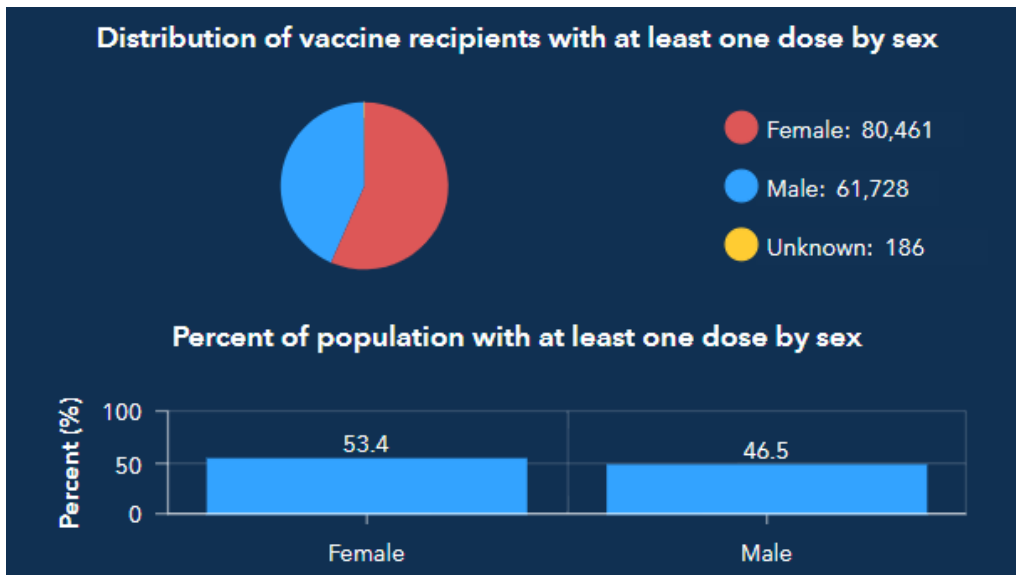
Zip Code	Previous 2/13	Current 2/20	Percent of Total	Previous 14 Days 1/24-2/06	Recent 14 Days 2/07-2/20	Percent Change in 14-Day Periods
<b>All Clayton</b>	56569	56787	100.0%	4241	563	-87%
<b>30236</b>	8647	8682	15.3%	421	84	-80%
<b>30238</b>	7484	7513	13.2%	578	89	-85%
<b>30274</b>	6859	6877	12.1%	1225	56	-95%
<b>30260</b>	4745	4768	8.4%	212	65	-69%
<b>30297</b>	4847	4862	8.6%	237	45	-81%
<b>30296</b>	4420	4434	7.8%	588	36	-94%
<b>30273</b>	3486	3506	6.2%	109	40	-63%
<b>30294</b>	3269	3283	5.8%	125	29	-77%
<b>30349</b>	3412	3424	6.0%	361	28	-92%
<b>30228</b>	3489	3509	6.2%	223	55	-75%
<b>30288</b>	883	888	1.6%	37	10	-73%
<b>30281</b>	792	797	1.4%	40	10	-75%
<b>30215</b>	482	483	0.9%	41	5	-88%
<b>30250</b>	195	197	0.3%	2	2	0%
<b>30237</b>	81	83	0.1%	5	2	-60%
<b>30326</b>	32	32	0.1%	0	0	NA
<b>30287</b>	17	17	0.0%	1	0	-100%
<b>30328</b>	13	13	0.0%	1	0	-100%
<b>30298</b>	15	15	0.0%	0	0	NA

Note: Data cleaning may lead to reassignment of cases from one territory to another based on corrected addresses which may appear as “decreases” when compared to previous counts. Zip codes with fewer than 5 cases reported were omitted from the table.

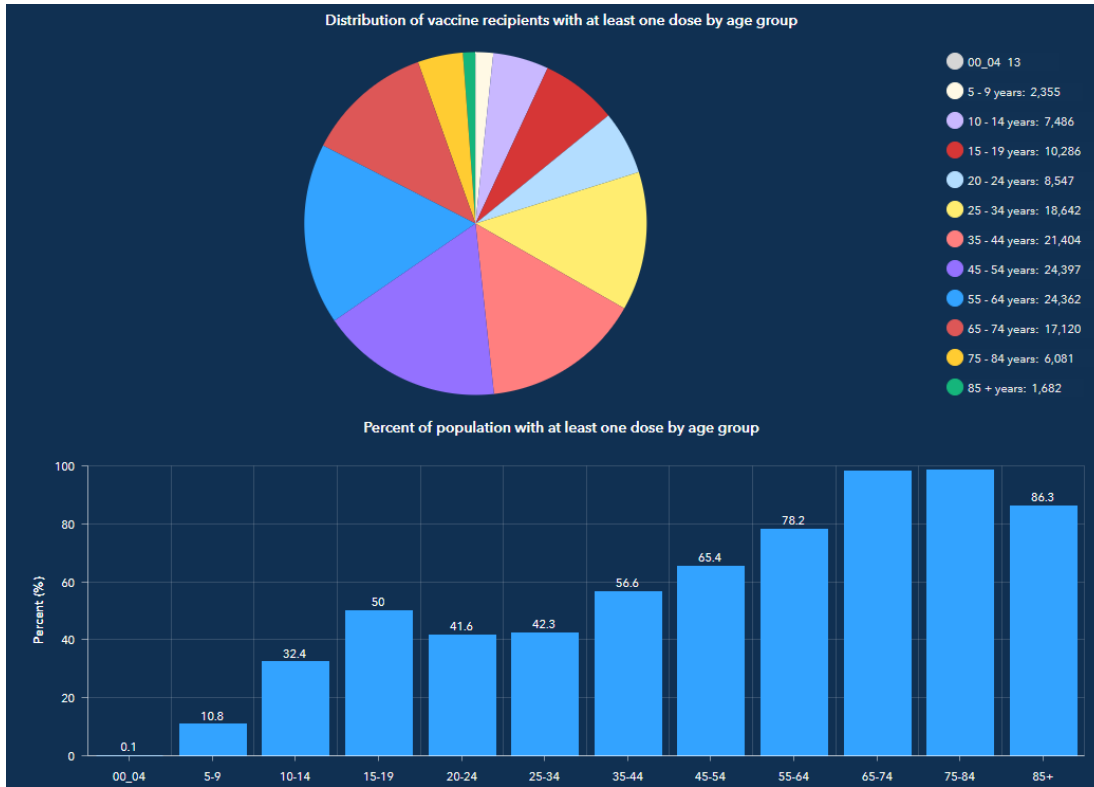
**FIGURE 7: CLAYTON COUNTY VACCINE NUMBERS AS OF 2/20/2022**



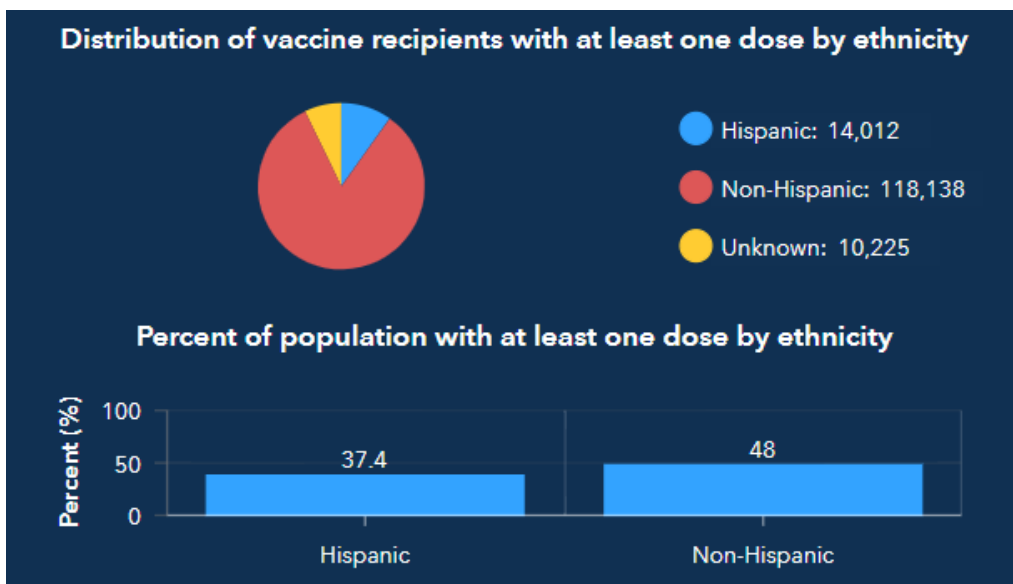
**FIGURE 8. PROPORTION OF VACCINE RECIPIENTS WITH AT LEAST ONE DOSE BY SEX IN CLAYTON COUNTY**



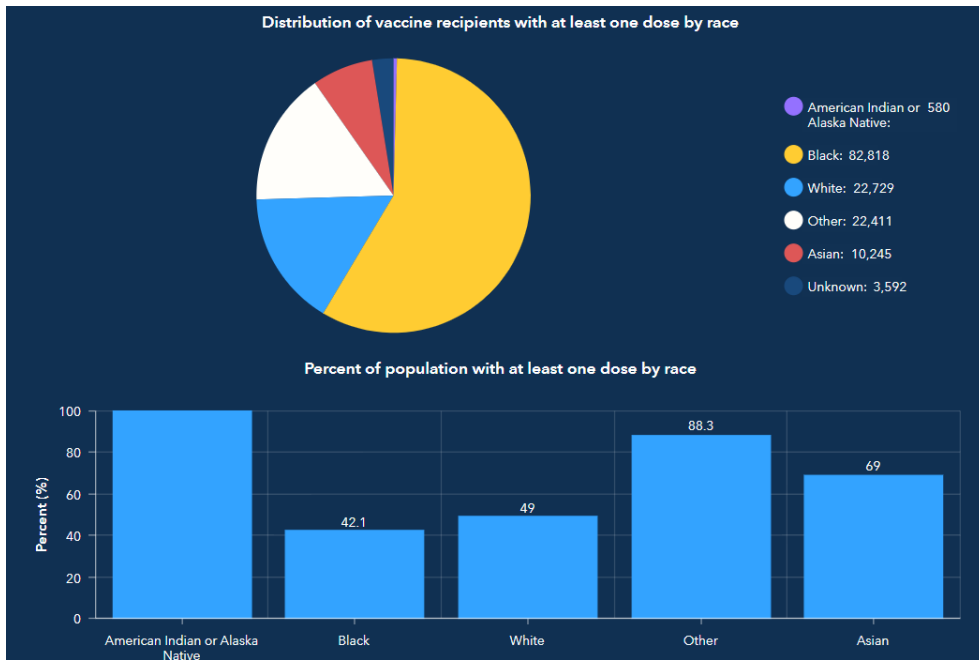
**FIGURE 9. PROPORTION OF VACCINE RECIPIENTS WITH AT LEAST ONE DOSE BY AGE IN CLAYTON COUNTY**



**FIGURE 10. PROPORTION OF VACCINE RECIPIENTS WITH AT LEAST ONE DOSE BY ETHNICITY IN CLAYTON COUNTY**



**FIGURE 11. PROPORTION OF VACCINE RECIPIENTS WITH AT LEAST ONE DOSE BY RACE IN CLAYTON COUNTY**



**FIGURE 12. CLAYTON COUNTY BREAKTHROUGH CASES**

