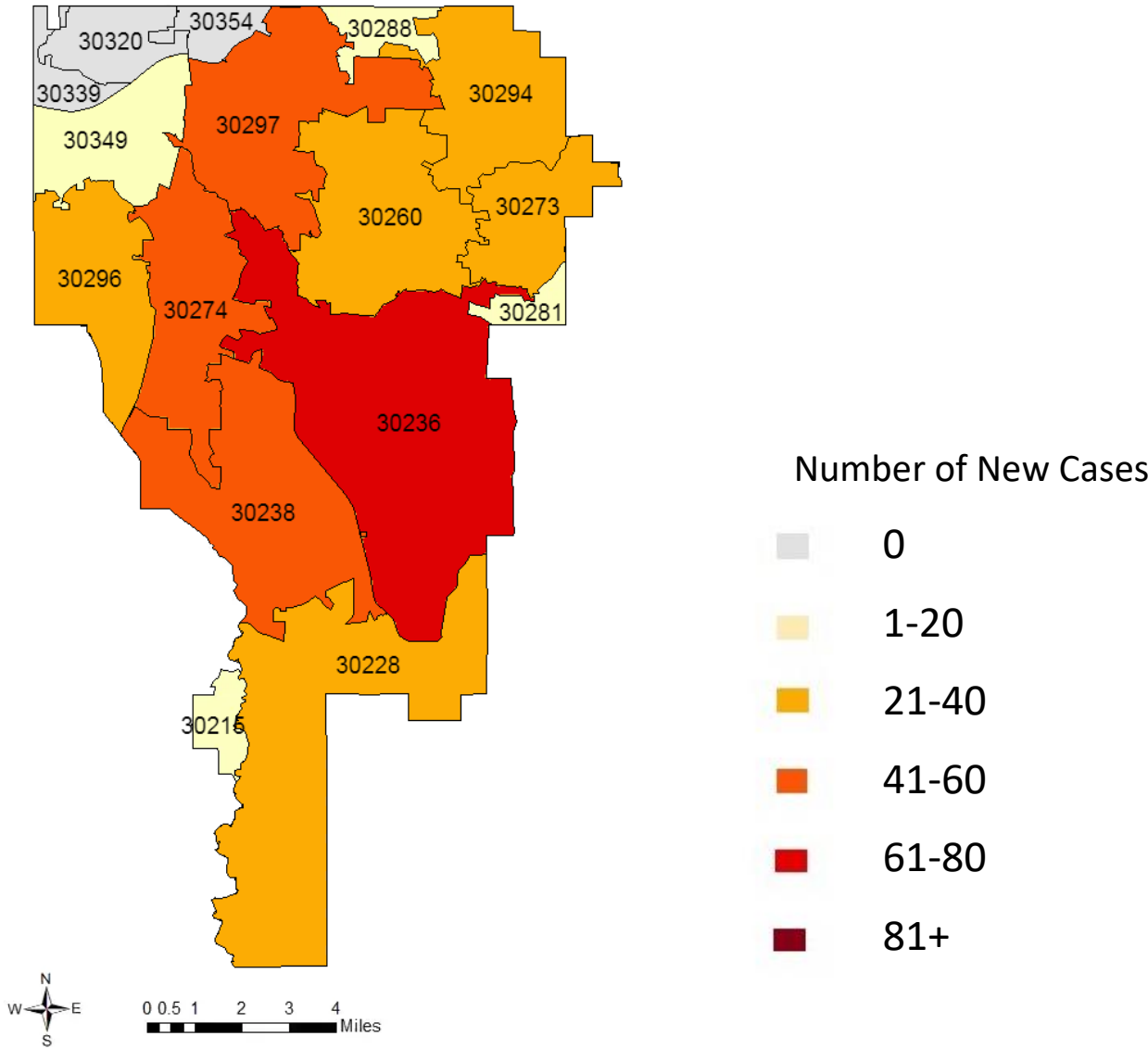


COVID-19 SUMMARY REPORT FOR CLAYTON COUNTY

Clayton County, Georgia
From 8/22 – 8/28/2022



Created: August 29, 2022
Source: Clayton County Health District and
Georgia Department of Public Health, State
Electronic Notifiable Disease Surveillance System

- As of August 28, 2022, Clayton County has 65,898 cases of 2019 Novel Coronavirus (COVID-19) and 945 confirmed deaths.
- There were 435 new positive COVID-19 tests reported in Clayton County from 8/22-8/28.
- Clayton County accounts for 3.0% of the total cases in Georgia.
- 5.7% of the positive cases in Clayton County have been hospitalized from 8/22-8/28.
- 0.0% of positive cases in Clayton County have died.
- The average percent of Positive PCR tests in Clayton County over the last 7 days is 17.8%.
- The total number of confirmed cases (PCR) per 100,000 people in Clayton County is 21,620.
- The total number of cases (PCR and Antigen) per 100,000 people in Clayton County is 23,822.
- In Clayton County 157,371 residents (56%) have received at least one dose of a COVID-19 vaccine and 141,084 (50%) have been fully vaccinated.
- As of August 28, 2022, Clayton County has 58,057 (41%) fully vaccinated individuals that have received an additional dose of vaccine.

TABLE 1. CUMULATIVE COVID-19 CASES AND PERCENT CHANGE FOR CLAYTON COUNTY

	Aug 22	Aug 23	Aug 24	Aug 25	Aug 26	Aug 27	Aug 28
Clayton County	65510	65553	65658	65719	65758	65860	65898
% Change	0.07%	0.14%	0.16%	0.09%	0.06%	0.15%	0.06%

FIGURE 1. DAILY NEW COVID-19 POSITIVE INDIVIDUALS FOR CLAYTON COUNTY OVER 7-DAY PERIOD

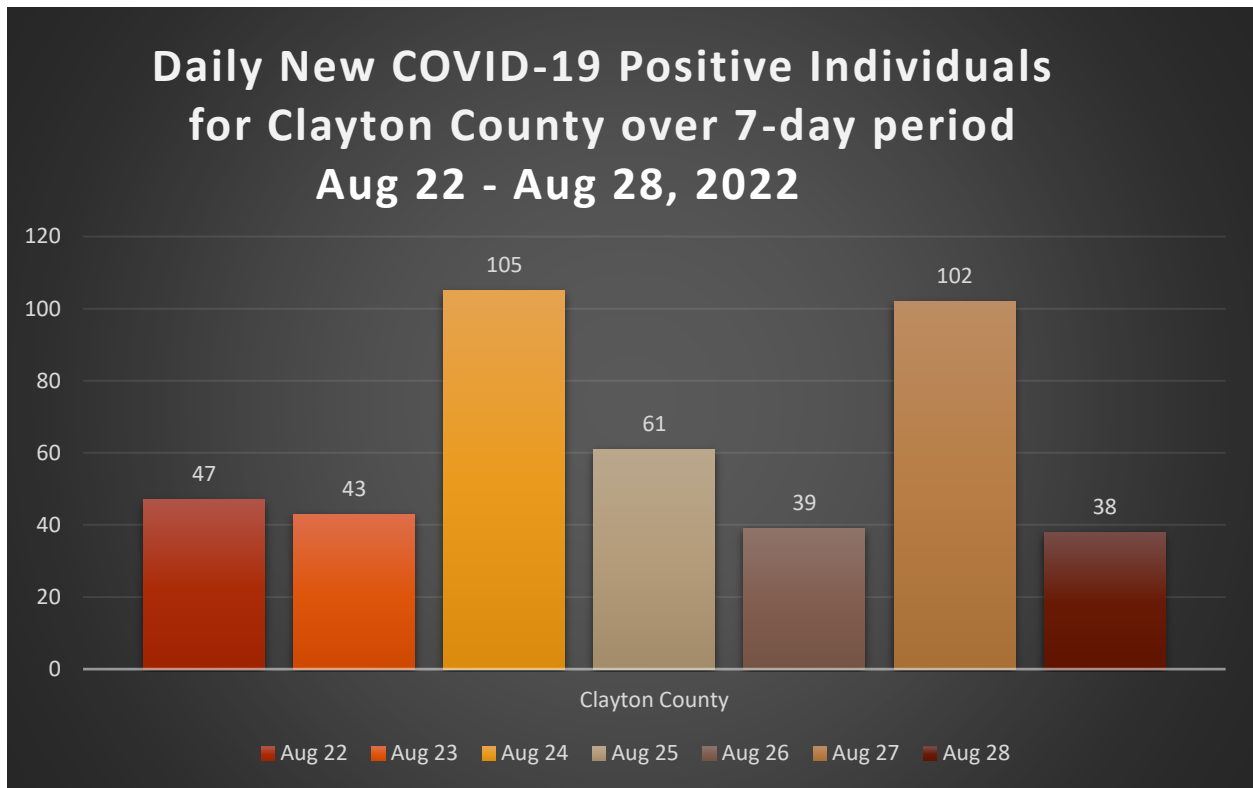




TABLE 2. CUMULATIVE COVID-19 CASE COUNTS BY CITY AND %TOTAL OF CLAYTON COUNTY CASES

City	Aug 22	Aug 23	Aug 24	Aug 25	Aug 26	Aug 27	Aug 28	% Total*
Jonesboro	19886	19896	19930	19948	19958	19991	20006	30.4%
Riverdale	13827	13833	13853	13859	13866	13893	13899	21.1%
Hampton	4413	4416	4425	4430	4434	4445	4446	6.7%
Forest Park	5672	5680	5688	5694	5699	5705	5708	8.7%
Morrow	5501	5505	5513	5522	5525	5531	5534	8.4%
Ellenwood	3991	3992	3999	4000	4000	4008	4011	6.1%
Rex	4267	4272	4279	4284	4286	4292	4295	6.5%
Atlanta	2728	2730	2732	2734	2739	2741	2742	4.2%
Lake City	300	300	302	302	302	302	302	0.5%
Stockbridge	953	954	957	957	957	958	960	1.5%
College Park	1543	1545	1548	1548	1549	1549	1549	2.4%
Conley	1079	1080	1081	1085	1087	1087	1087	1.6%
Fayetteville	659	659	660	664	664	666	667	1.0%
Lovejoy	233	233	233	234	234	234	234	0.4%
Unknown	458	458	458	458	458	458	458	0.7%
Total	65510	65553	65658	65719	65758	65860	65898	100%

TABLE 3. DAILY NUMBER OF NEW COVID-19 CASES BY CITY

City	Aug 22	Aug 23	Aug 24	Aug 25	Aug 26	Aug 27	Aug 28	Total
Jonesboro	17	10	34	18	10	33	15	137
Riverdale	6	6	20	6	7	27	6	78
Hampton	3	3	9	5	4	11	1	36
Forest Park	7	8	8	6	5	6	3	43
Morrow	4	4	8	9	3	6	3	37
Ellenwood	3	1	7	1	0	8	3	23
Rex	2	5	7	5	2	6	3	30
Atlanta	0	2	2	2	5	2	1	14
Lake City	1	0	2	0	0	0	0	3
Stockbridge	0	1	3	0	0	1	2	7
College Park	0	2	3	0	1	0	0	6
Conley	1	1	1	4	2	0	0	9
Fayetteville	3	0	1	4	0	2	1	11
Lovejoy	0	0	0	1	0	0	0	1
Unknown	0	0	0	0	0	0	0	0
Total	47	43	105	61	39	102	38	435

*The percent total defines the percent of cases in Clayton County that comes from each city.



TABLE 4. COVID-19 CASES HOSPITALIZATION AND DEATH COUNTS IN CLAYTON COUNTY

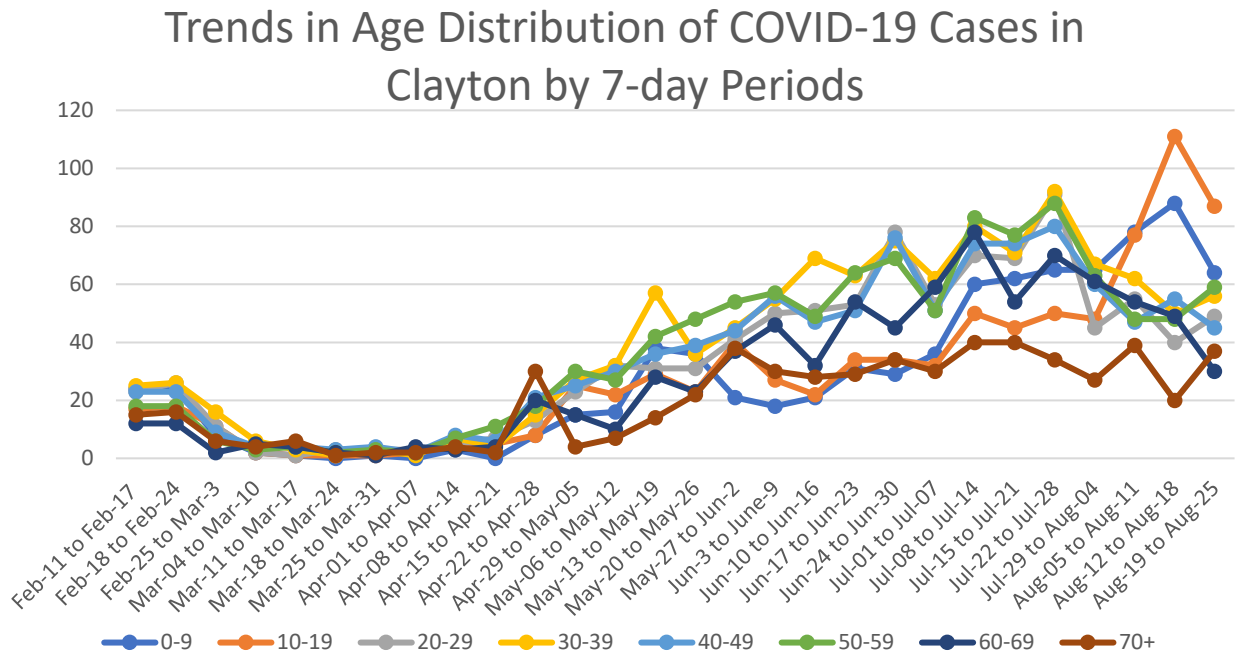
	Previous 14 Days 7/25-8/07	Recent 14 Days 8/08-8/21	% Change
Needed Hospitalization	73	49	-32.9%

	Total Count	% of Cases That Died
Died	945	1.4%

TABLE 5. DEMOGRAPHIC DATA OF COVID-19 CASES IN CLAYTON COUNTY

Demographic	Count	%
Gender		
Female	38130	57.9%
Male	27478	41.7%
Unknown	290	0.4%
Age Group		
0-9	5650	8.6%
10-19	8372	12.7%
20-29	11425	17.3%
30-39	12218	18.5%
40-49	10225	15.5%
50-59	9054	13.7%
60-69	5653	8.58%
70+	3275	4.97%
Race		
Asian	1614	2.4%
Black	39564	60.0%
Other	4853	7.4%
White	6506	9.9%
Unknown	13361	20.3%
Ethnicity		
Hispanic/Latino	8053	12.2%
Non-Hispanic/Latino	43030	65.3%
Unknown/Not Specified	14815	22.5%

FIGURE 2. DISTRIBUTION OF POSITIVE CASES BY AGE OVER 7-DAY PERIODS



Graphs shown reflect the number of confirmed cases by age using the date of first positive sample collection. All data reported are preliminary and subject to change.

FIGURE 3. PROPORTION OF COVID-19 CASES BY RACE IN CLAYTON COUNTY

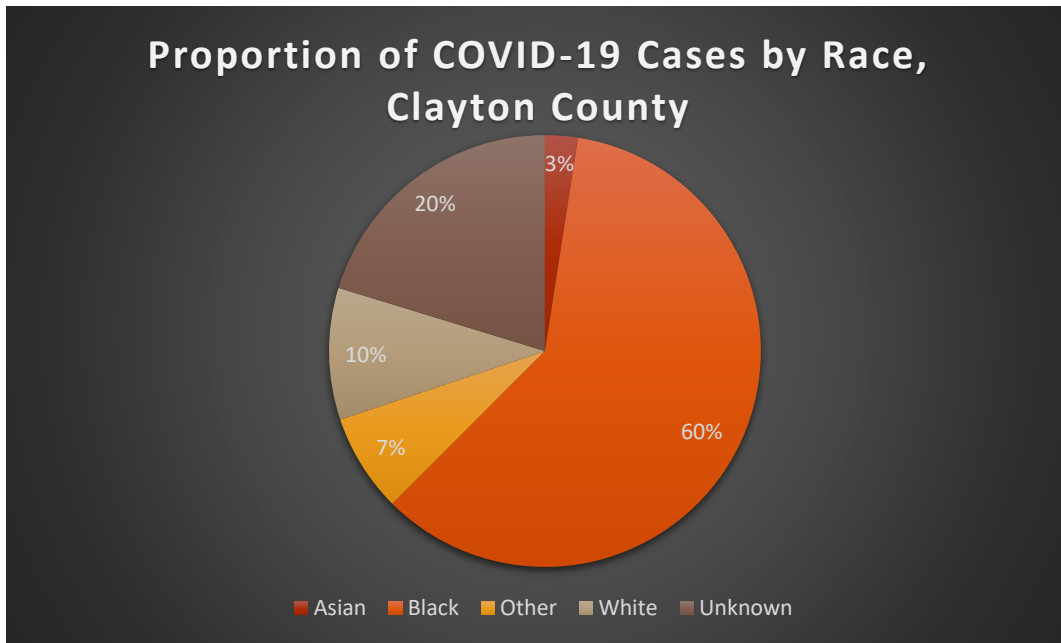
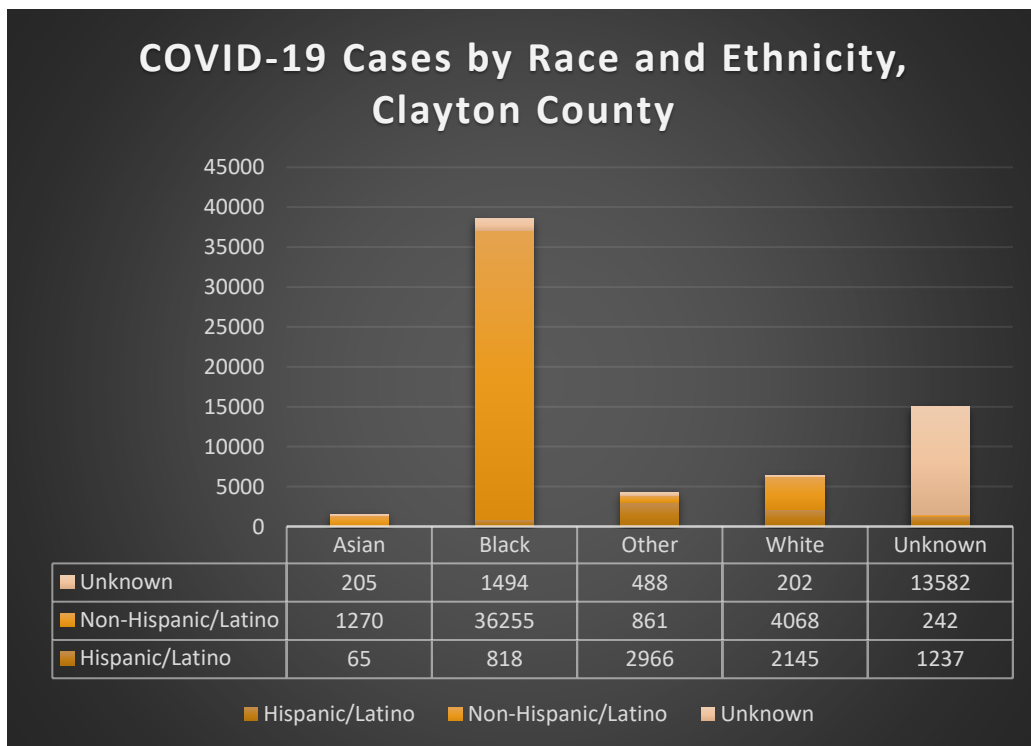
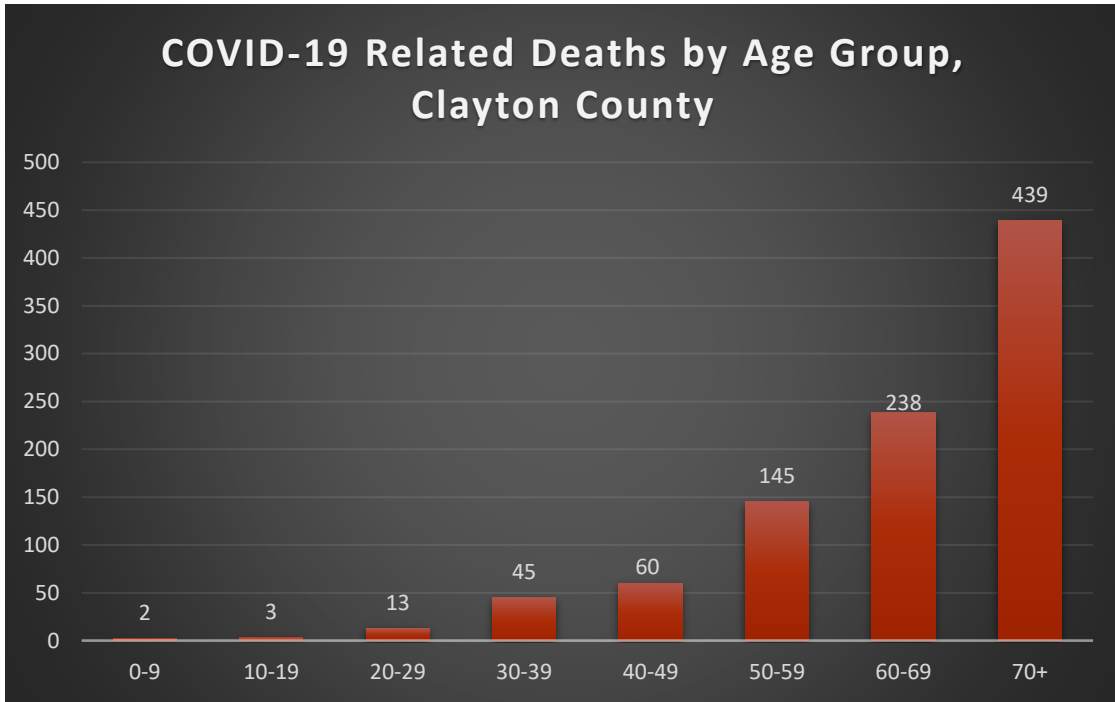


FIGURE 4. COVID-19 CASES BY RACE AND ETHNICITY IN CLAYTON COUNTY



**FIGURE 5. COVID-19 RELATED DEATHS BY AGE GROUP
CLAYTON COUNTY**



**FIGURE 6. COVID-19 RELATED DEATHS BY RACE AND
ETHNICITY IN CLAYTON COUNTY**

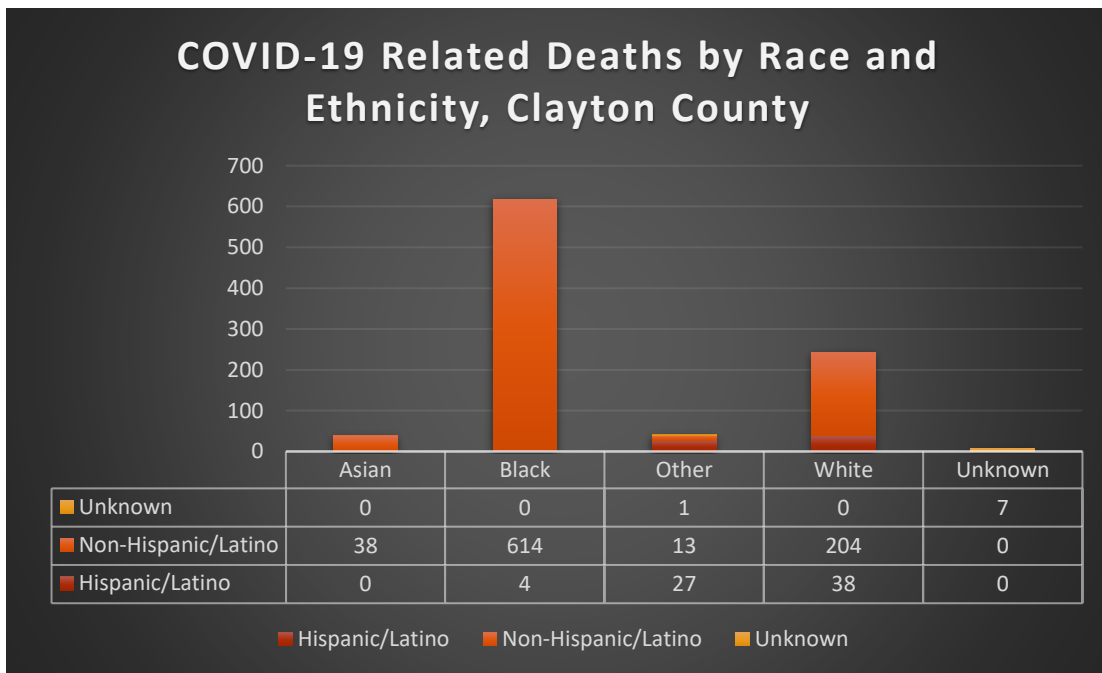




TABLE 6. COVID-19 CASE COUNTS BY ZIP CODE AND CHANGE IN TWO MOST RECENT 14-DAY PERIODS

Zip Code	Previous 8/21	Current 8/28	Percent of Total	Previous 14 Days 8/01-8/14	Recent 14 Days 8/15-8/28	Percent Change in 14-Day Periods
All Clayton	65463	65898	100.0%	1059	892	-16%
30236	10017	10093	15.3%	141	149	6%
30238	8823	8883	13.5%	161	117	-27%
30274	7834	7887	12.0%	123	100	-19%
30260	5484	5524	8.4%	96	81	-16%
30297	5437	5480	8.3%	83	85	2%
30296	5237	5262	8.0%	97	64	-34%
30273	4023	4053	6.2%	61	67	10%
30294	3826	3849	5.8%	58	51	-12%
30349	4030	4050	6.1%	84	38	-55%
30228	4245	4281	6.5%	93	80	-14%
30288	1020	1029	1.6%	21	16	-24%
30281	920	927	1.4%	12	16	33%
30215	637	648	1.0%	22	20	-9%
30250	208	209	0.3%	1	3	200%
30237	108	109	0.2%	4	3	-25%
30326	35	35	0.1%	0	0	NA
30287	19	19	0.0%	0	0	NA
30328	15	15	0.0%	0	0	NA
30298	37	37	0.1%	0	0	NA

Note: Data cleaning may lead to reassignment of cases from one territory to another based on corrected addresses which may appear as “decreases” when compared to previous counts. Zip codes with fewer than 5 cases reported were omitted from the table.

FIGURE 7: CLAYTON COUNTY VACCINE NUMBERS AS OF 8/28/2022

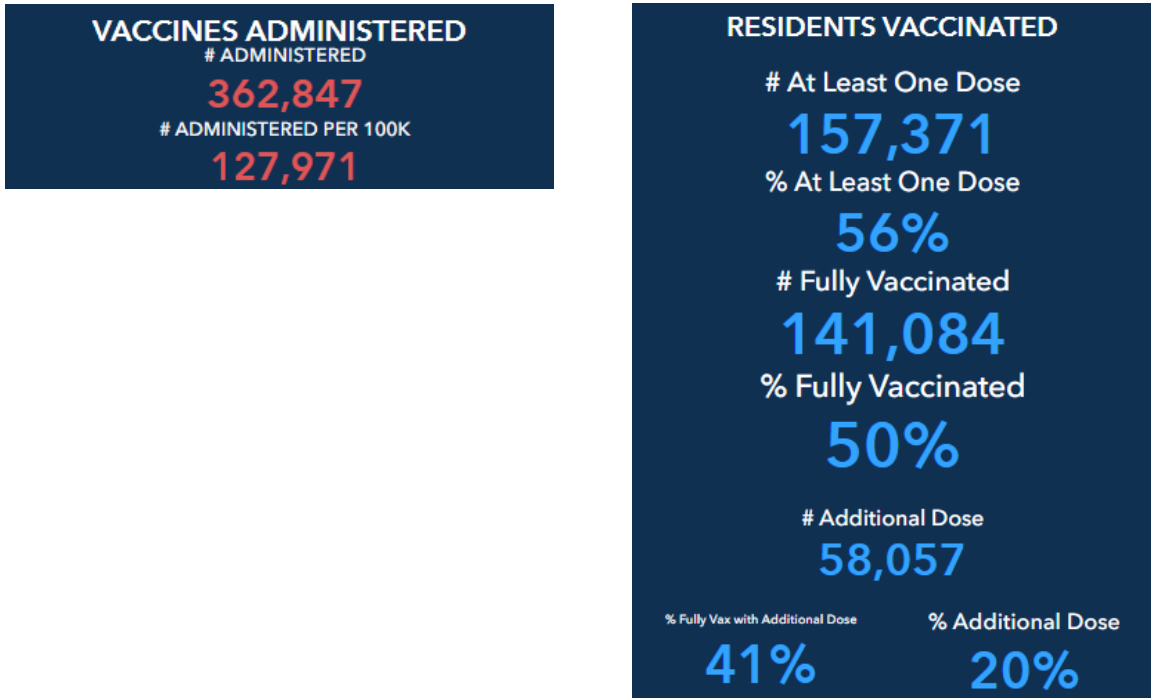


FIGURE 8. PROPORTION OF VACCINE RECIPIENTS WITH AT LEAST ONE DOSE BY SEX IN CLAYTON COUNTY

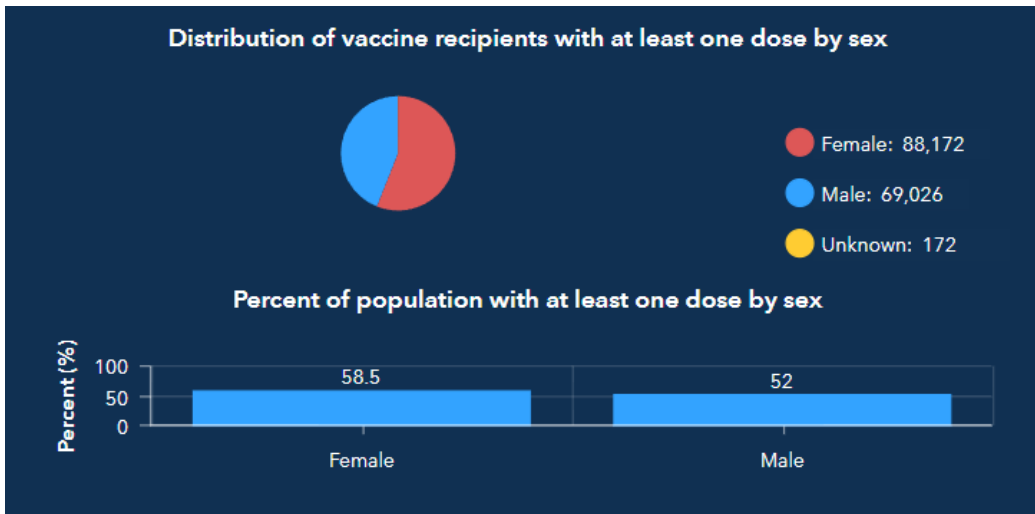


FIGURE 9. PROPORTION OF VACCINE RECIPIENTS WITH AT LEAST ONE DOSE BY AGE IN CLAYTON COUNTY

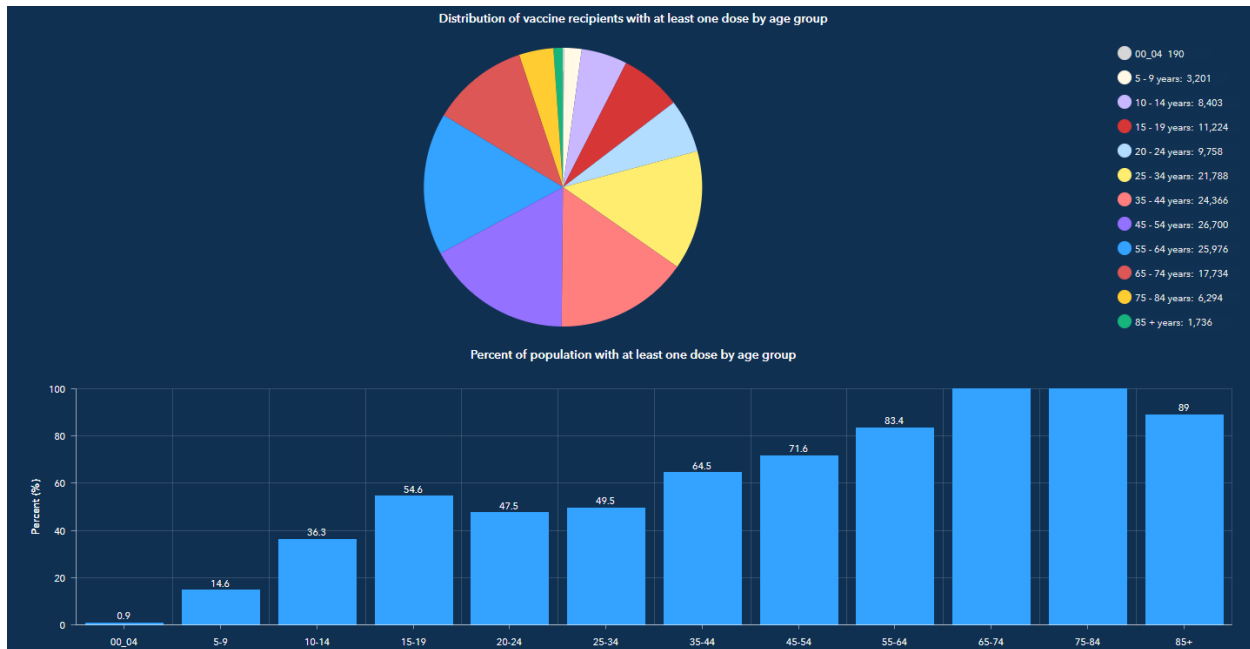


FIGURE 10. PROPORTION OF VACCINE RECIPIENTS WITH AT LEAST ONE DOSE BY ETHNICITY IN CLAYTON COUNTY

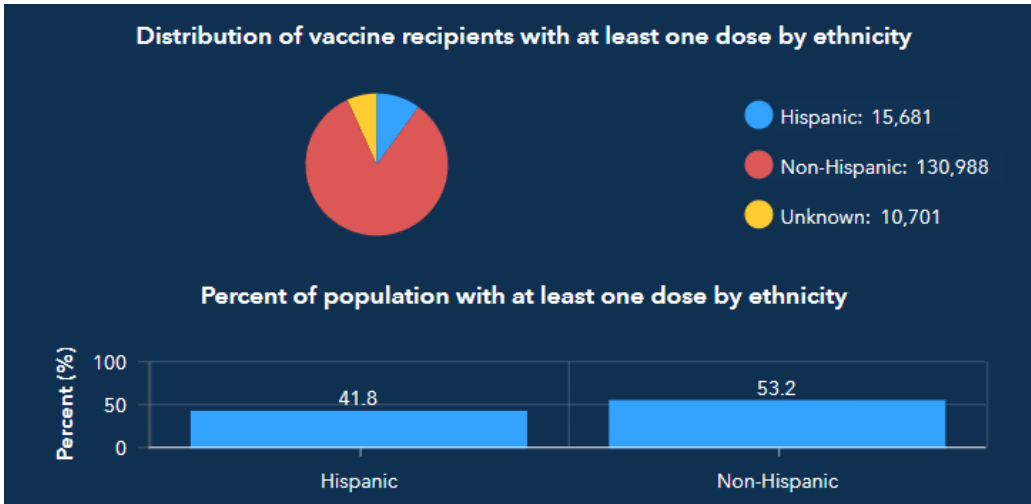


FIGURE 11. PROPORTION OF VACCINE RECIPIENTS WITH AT LEAST ONE DOSE BY RACE IN CLAYTON COUNTY

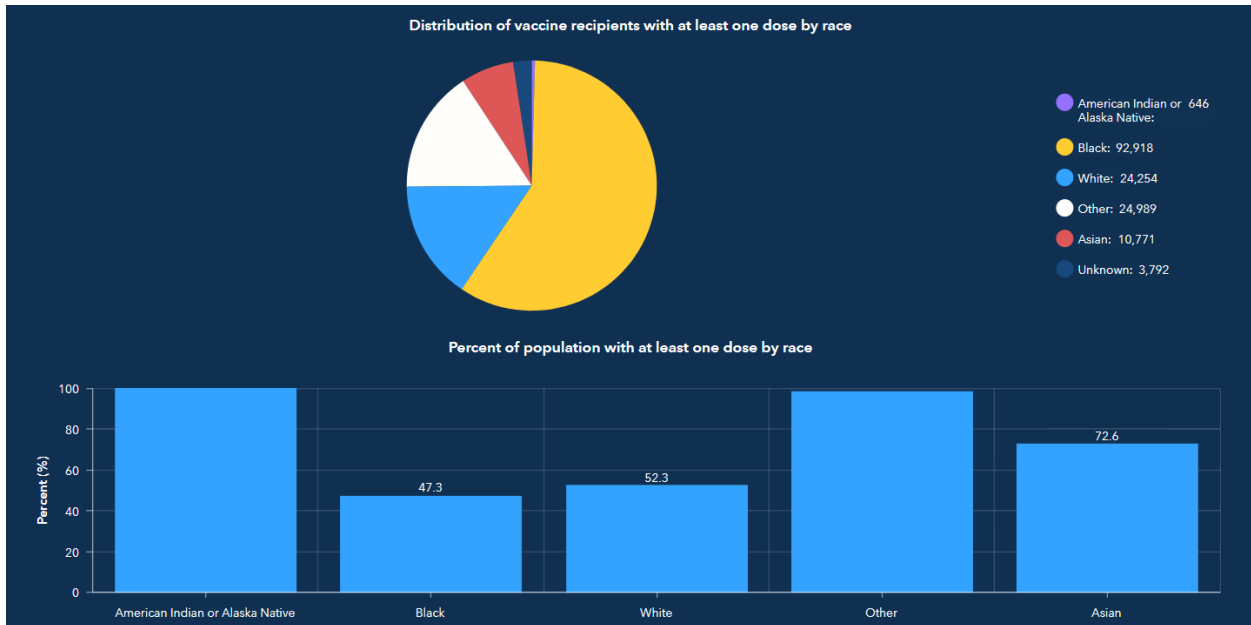


FIGURE 12. CLAYTON COUNTY BREAKTHROUGH CASES

