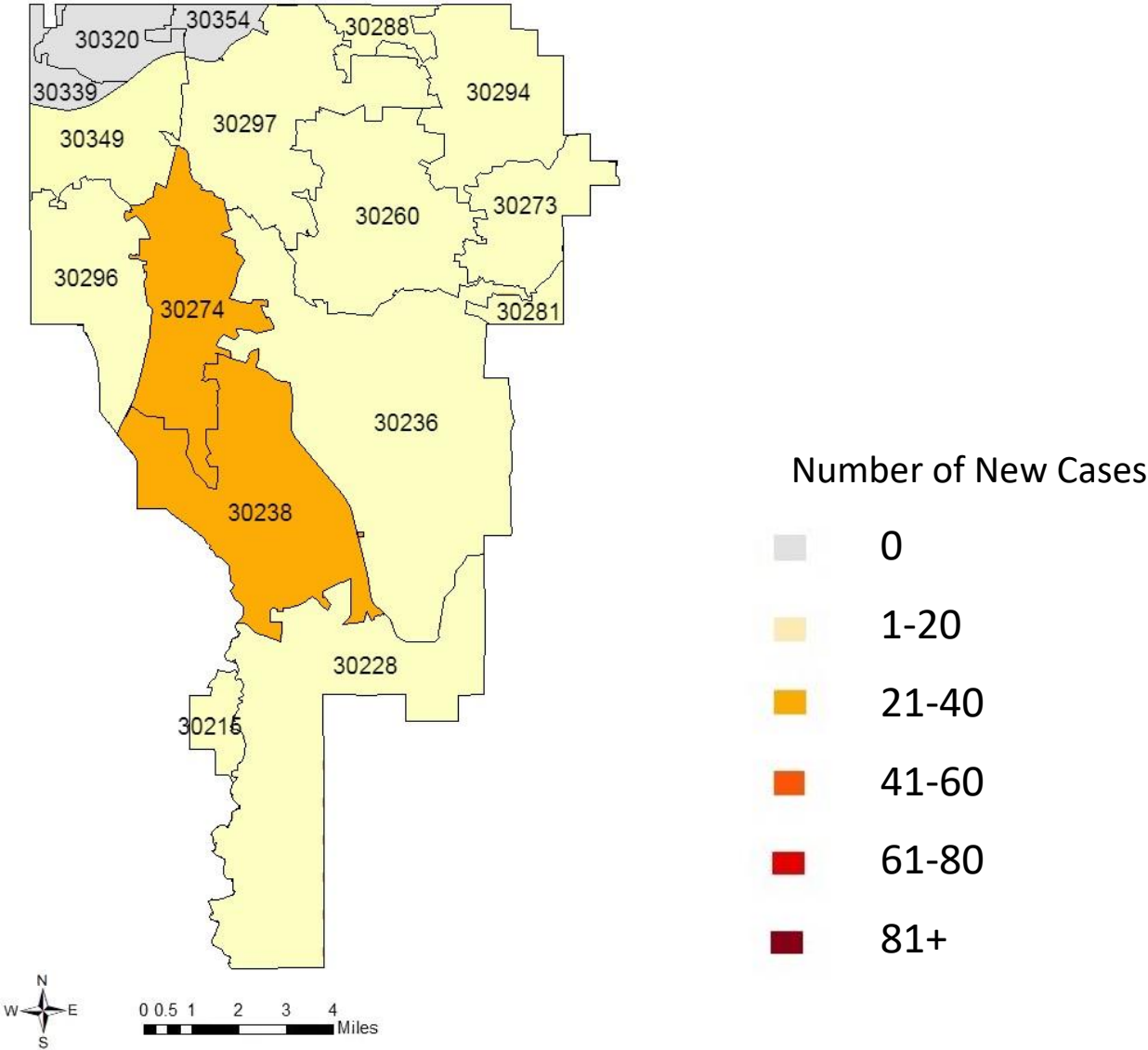


COVID-19 SUMMARY REPORT FOR CLAYTON COUNTY

Clayton County, Georgia From 9/05 – 9/11/2022



Created: September 12, 2022
Source: Clayton County Health District and Georgia Department of Public Health, State Electronic Notifiable Disease Surveillance System

- As of September 11, 2022, Clayton County has 66,122 cases of 2019 Novel Coronavirus (COVID-19) and 949 confirmed deaths.
- There were 167 new positive COVID-19 tests reported in Clayton County from 9/05-9/11.
- Clayton County accounts for 3.0% of the total cases in Georgia.
- 9.6% of the positive cases in Clayton County have been hospitalized from 9/05-9/11.
- 0.0% of positive cases in Clayton County have died.
- The average percent of Positive PCR tests in Clayton County over the last 7 days is 11%.
- The total number of confirmed cases (PCR) per 100,000 people in Clayton County is 21,839.
- The total number of cases (PCR and Antigen) per 100,000 people in Clayton County is 24,063.
- In Clayton County 157,595 residents (56%) have received at least one dose of a COVID-19 vaccine and 141,311 (50%) have been fully vaccinated.
- As of September 11, 2022, Clayton County has 58,330 (41%) fully vaccinated individuals that have received an additional dose of vaccine.

TABLE 1. CUMULATIVE COVID-19 CASES AND PERCENT CHANGE FOR CLAYTON COUNTY

	Sep 05	Sep 06	Sep 07	Sep 08	Sep 09	Sep 10	Sep 11
Clayton County	65970	65981	66034	66054	66081	66099	66122
% Change	0.02%	0.04%	0.08%	0.03%	0.04%	0.03%	0.03%

FIGURE 1. DAILY NEW COVID-19 POSITIVE INDIVIDUALS FOR CLAYTON COUNTY OVER 7-DAY PERIOD

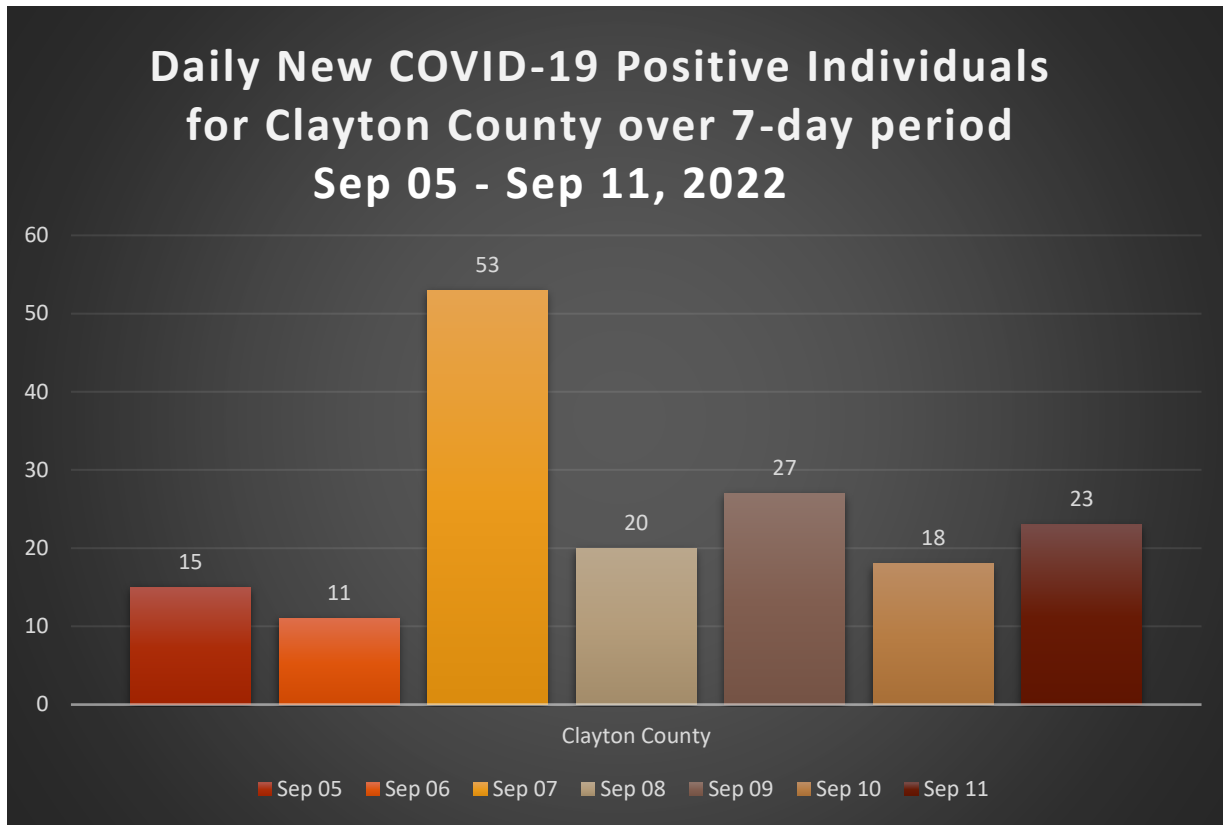


TABLE 2. CUMULATIVE COVID-19 CASE COUNTS BY CITY AND %TOTAL OF CLAYTON COUNTY CASES

City	Sep 05	Sep 06	Sep 07	Sep 08	Sep 09	Sep 10	Sep 11	% Total*
Jonesboro	20108	20110	20132	20136	20139	20144	20148	30.5%
Riverdale	13971	13975	13984	13990	13994	13999	14005	21.2%
Hampton	4473	4473	4476	4477	4481	4482	4485	6.8%
Forest Park	5735	5737	5741	5744	5747	5749	5750	8.7%
Morrow	5557	5557	5561	5561	5562	5562	5564	8.4%
Ellenwood	4038	4039	4042	4046	4051	4051	4055	6.1%
Rex	4317	4317	4319	4319	4321	4322	4323	6.5%
Atlanta	2759	2760	2762	2762	2763	2764	2766	4.2%
Lake City	303	303	304	304	305	305	305	0.5%
Stockbridge	963	964	966	967	967	967	967	1.5%
College Park	1553	1553	1554	1554	1556	1557	1557	2.4%
Conley	1093	1093	1093	1094	1094	1094	1094	1.7%
Fayetteville	673	673	673	673	674	676	676	1.0%
Lovejoy	236	236	236	236	236	236	236	0.4%
Unknown	191	191	191	191	191	191	191	0.3%
Total	65970	65981	66034	66054	66081	66099	66122	100%

TABLE 3. DAILY NUMBER OF NEW COVID-19 CASES BY CITY

City	Sep 05	Sep 06	Sep 07	Sep 08	Sep 09	Sep 10	Sep 11	Total
Jonesboro	7	2	22	4	3	5	4	47
Riverdale	0	4	9	6	4	5	6	34
Hampton	4	0	3	1	4	1	3	16
Forest Park	2	2	4	3	3	2	1	17
Morrow	0	0	4	0	1	0	2	7
Ellenwood	1	1	3	4	5	0	4	18
Rex	1	0	2	0	2	1	1	7
Atlanta	0	1	2	0	1	1	2	7
Lake City	0	0	1	0	1	0	0	2
Stockbridge	0	1	2	1	0	0	0	4
College Park	0	0	1	0	2	1	0	4
Conley	0	0	0	1	0	0	0	1
Fayetteville	0	0	0	0	1	2	0	3
Lovejoy	0	0	0	0	0	0	0	0
Unknown	0	0	0	0	0	0	0	0
Total	15	11	53	20	27	18	23	167

*The percent total defines the percent of cases in Clayton County that comes from each city.

TABLE 4. COVID-19 CASES HOSPITALIZATION AND DEATH COUNTS IN CLAYTON COUNTY

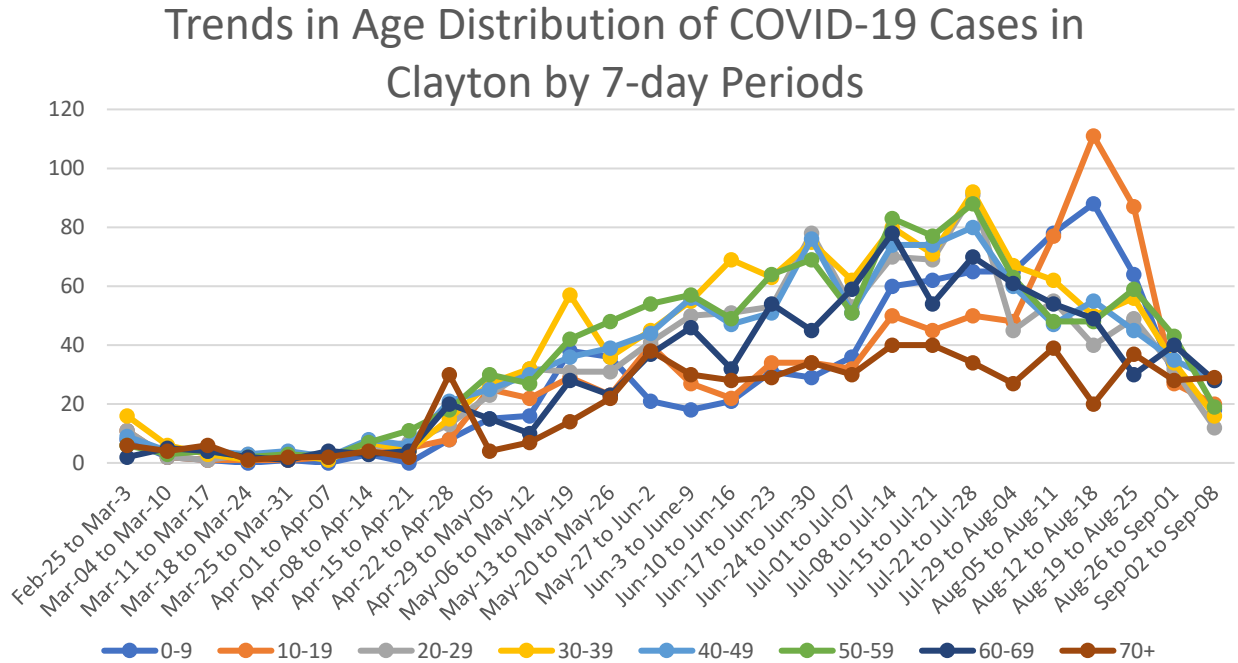
	Previous 14 Days 8/15-8/28	Recent 14 Days 8/29- 9/11	% Change
Needed Hospitalization	49	29	-40.8%

	Total Count	% of Cases That Died
Died	949	1.4%

TABLE 5. DEMOGRAPHIC DATA OF COVID-19 CASES IN CLAYTON COUNTY

Demographic	Count	%
Gender		
Female	38416	58.1%
Male	27684	41.9%
Unknown	22	0.0%
Age Group		
0-9	5700	8.6%
10-19	8431	12.7%
20-29	11479	17.3%
30-39	12271	18.5%
40-49	10303	15.5%
50-59	9123	13.7%
60-69	5727	8.63%
70+	3332	5.02%
Race		
Asian	1621	2.5%
Black	39848	60.3%
Other	4906	7.4%
White	6559	9.9%
Unknown	13188	19.9%
Ethnicity		
Hispanic/Latino	8110	12.3%
Non-Hispanic/Latino	43345	65.6%
Unknown/Not Specified	14667	22.2%

FIGURE 2. DISTRIBUTION OF POSITIVE CASES BY AGE OVER 7-DAY PERIODS



Graphs shown reflect the number of confirmed cases by age using the date of first positive sample collection. All data reported are preliminary and subject to change.

FIGURE 3. PROPORTION OF COVID-19 CASES BY RACE IN CLAYTON COUNTY

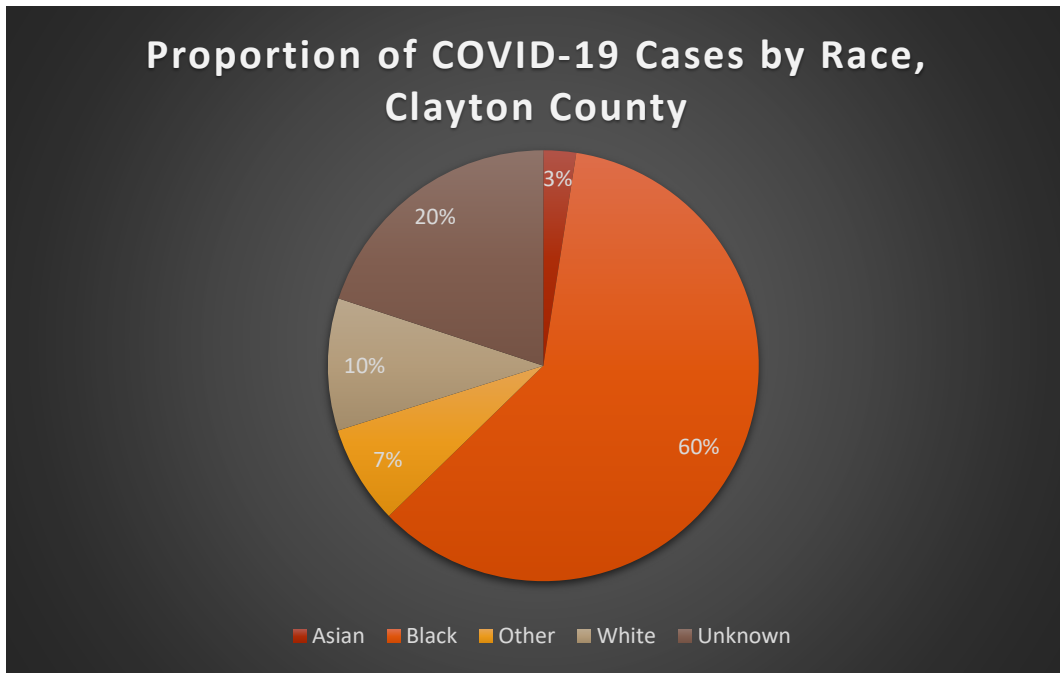
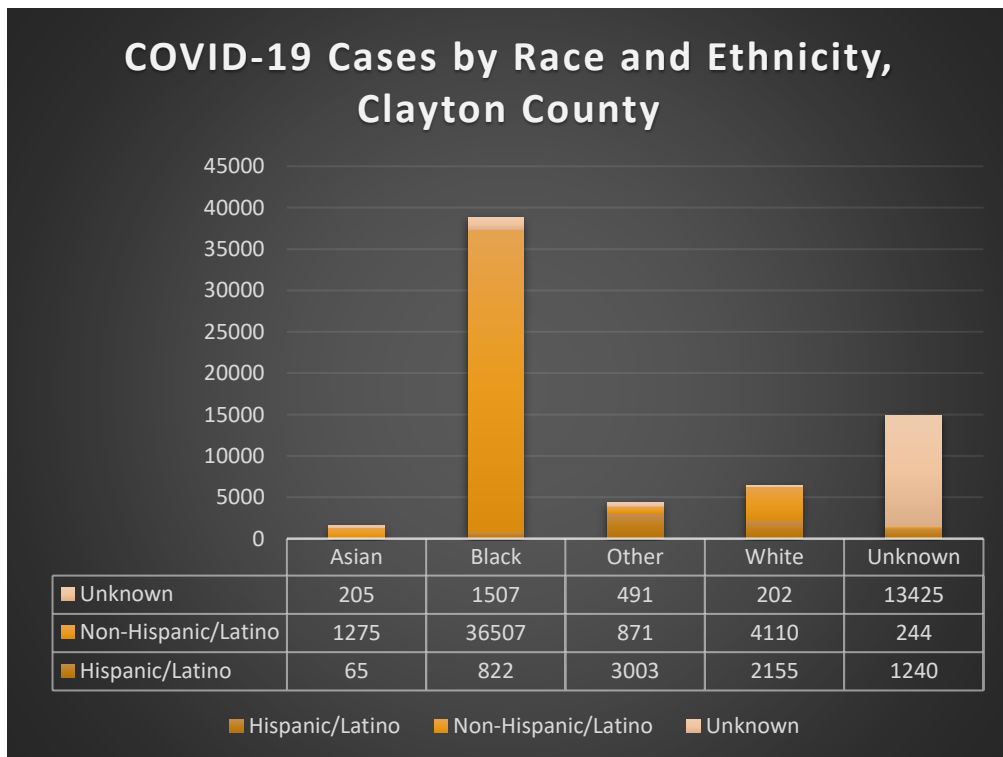
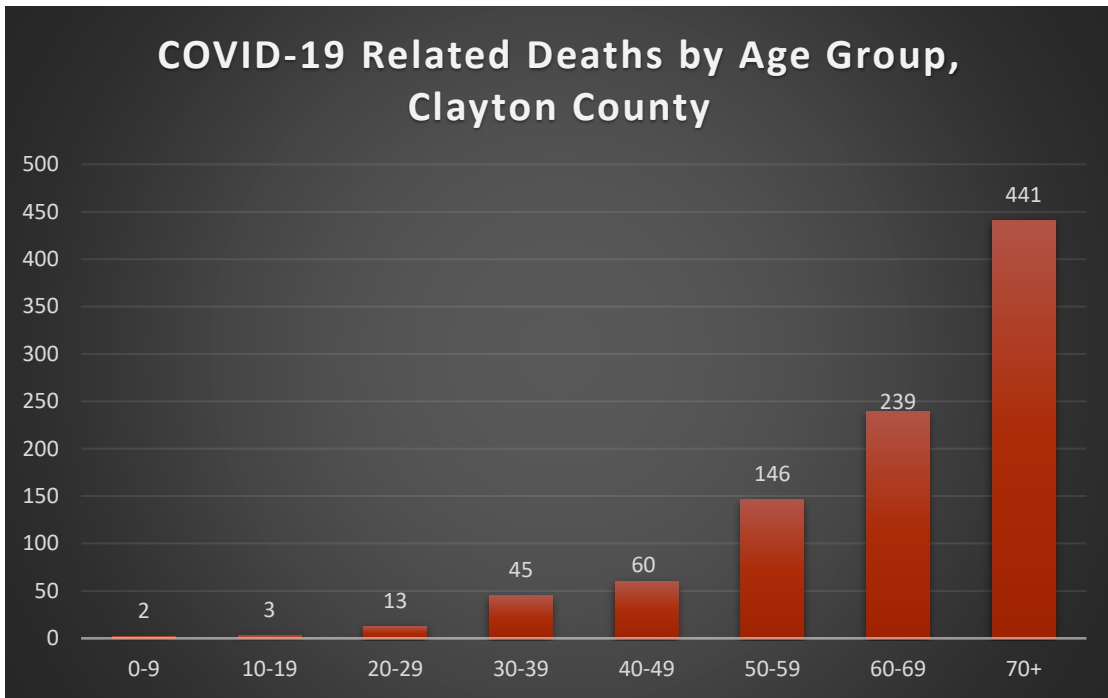


FIGURE 4. COVID-19 CASES BY RACE AND ETHNICITY IN CLAYTON COUNTY



**FIGURE 5. COVID-19 RELATED DEATHS BY AGE GROUP
CLAYTON COUNTY**



**FIGURE 6. COVID-19 RELATED DEATHS BY RACE AND
ETHNICITY IN CLAYTON COUNTY**

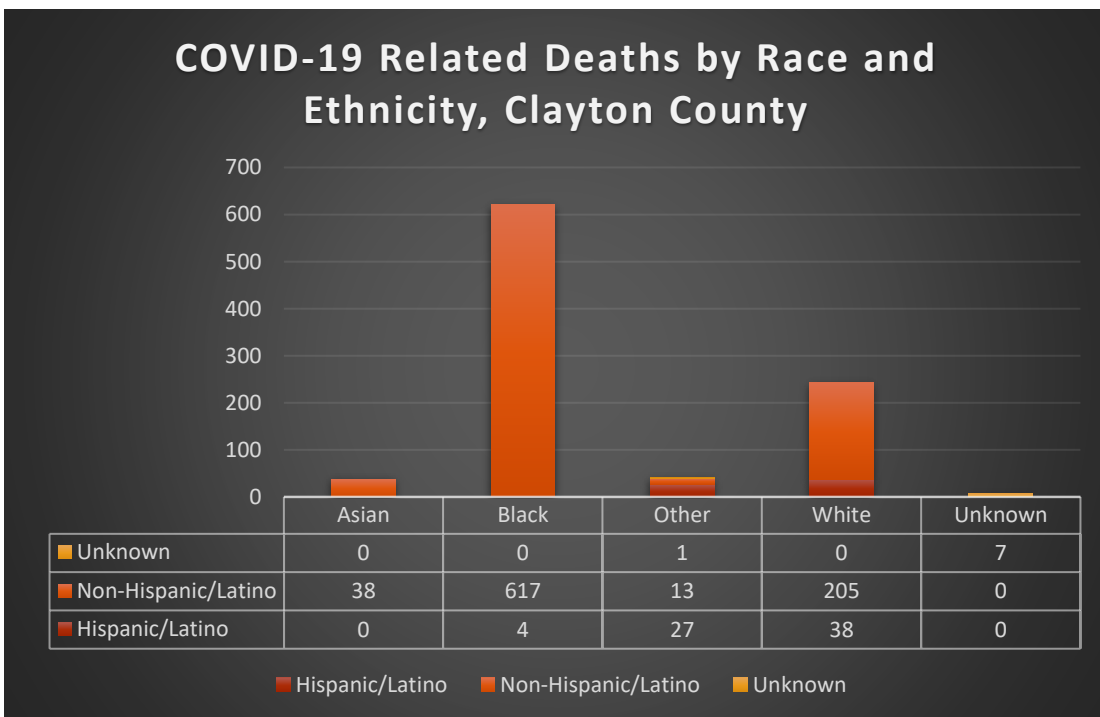


TABLE 6. COVID-19 CASE COUNTS BY ZIP CODE AND CHANGE IN TWO MOST RECENT 14-DAY PERIODS

Zip Code	Previous 9/04	Current 9/11	Percent of Total	Previous 14 Days 8/15-8/28	Recent 14 Days 8/29-9/11	Percent Change in 14-Day Periods
All				964	437	
Clayton	65955	66122	100.0%			-55%
30236	10138	10155	15.4%	162	51	-69%
30238	8931	8961	13.6%	124	69	-44%
30274	7924	7949	12.0%	111	59	-47%
30260	5548	5557	8.4%	90	27	-70%
30297	5505	5522	8.4%	94	39	-59%
30296	5298	5307	8.0%	70	38	-46%
30273	4074	4081	6.2%	73	28	-62%
30294	3875	3893	5.9%	52	39	-25%
30349	4071	4082	6.2%	42	31	-26%
30228	4303	4319	6.5%	84	38	-55%
30288	1034	1035	1.6%	16	4	-75%
30281	930	934	1.4%	17	6	-65%
30215	653	656	1.0%	20	6	-70%
30250	211	211	0.3%	3	2	-33%
30237	109	109	0.2%	3	0	-100%
30326	35	35	0.1%	0	0	NA
30287	19	19	0.0%	0	0	NA
30328	15	15	0.0%	0	0	NA
30298	37	37	0.1%	0	0	NA

Note: Data cleaning may lead to reassignment of cases from one territory to another based on corrected addresses which may appear as “decreases” when compared to previous counts. Zip codes with fewer than 5 cases reported were omitted from the table.

FIGURE 7: CLAYTON COUNTY VACCINE NUMBERS AS OF 9/11/2022

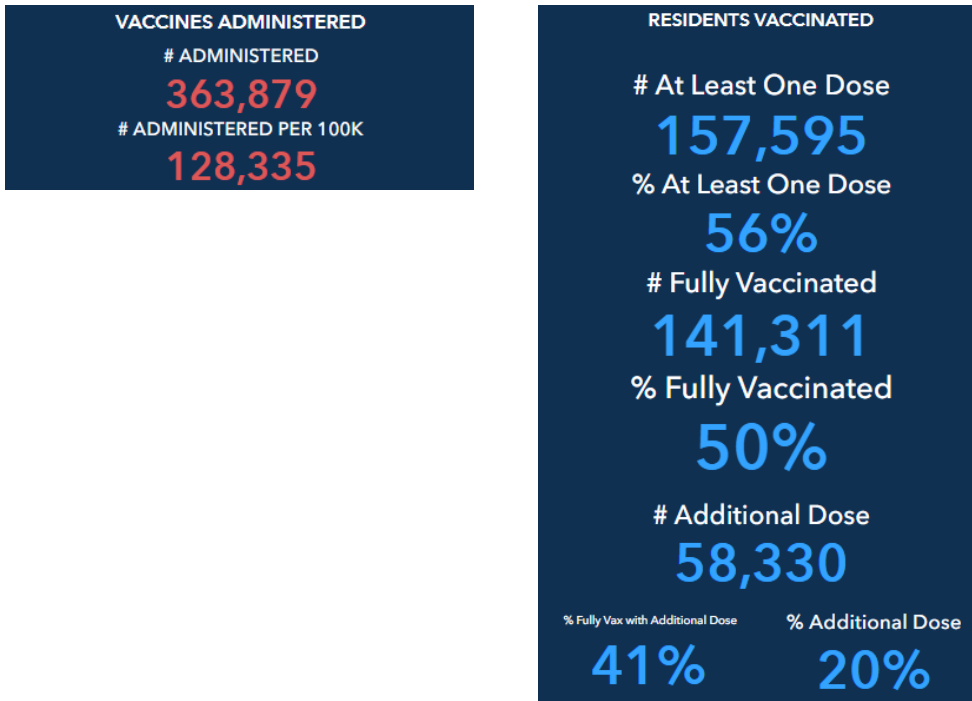


FIGURE 8. PROPORTION OF VACCINE RECIPIENTS WITH AT LEAST ONE DOSE BY SEX IN CLAYTON COUNTY

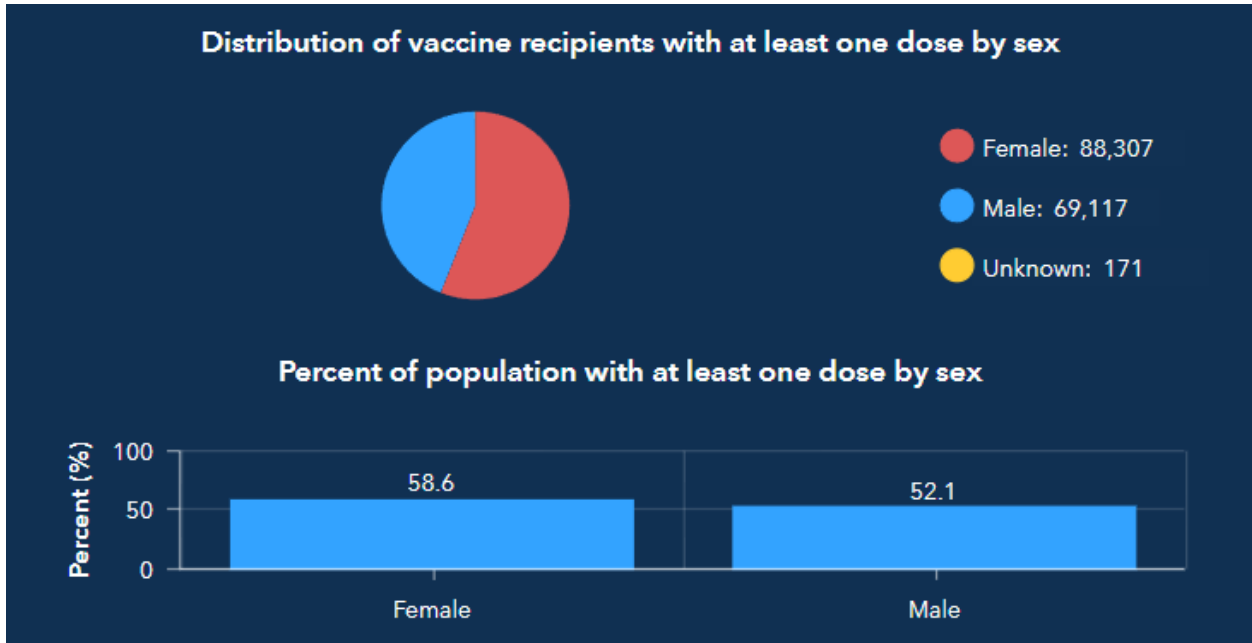


FIGURE 9. PROPORTION OF VACCINE RECIPIENTS WITH AT LEAST ONE DOSE BY AGE IN CLAYTON COUNTY

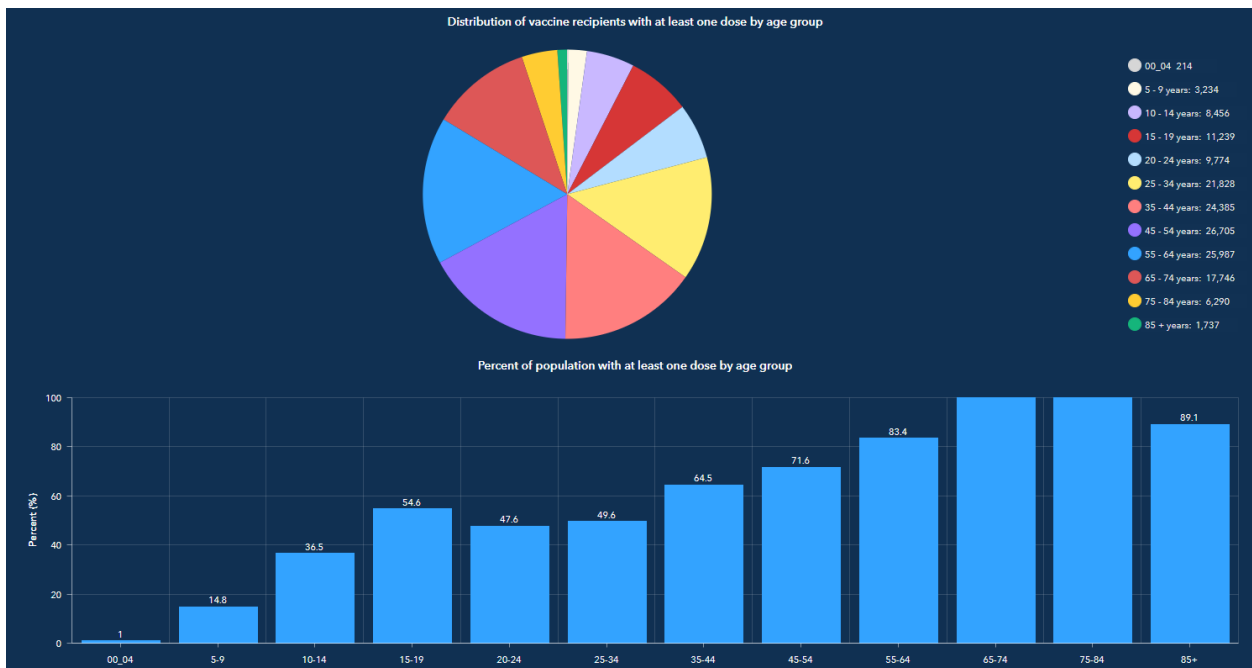


FIGURE 10. PROPORTION OF VACCINE RECIPIENTS WITH AT LEAST ONE DOSE BY ETHNICITY IN CLAYTON COUNTY

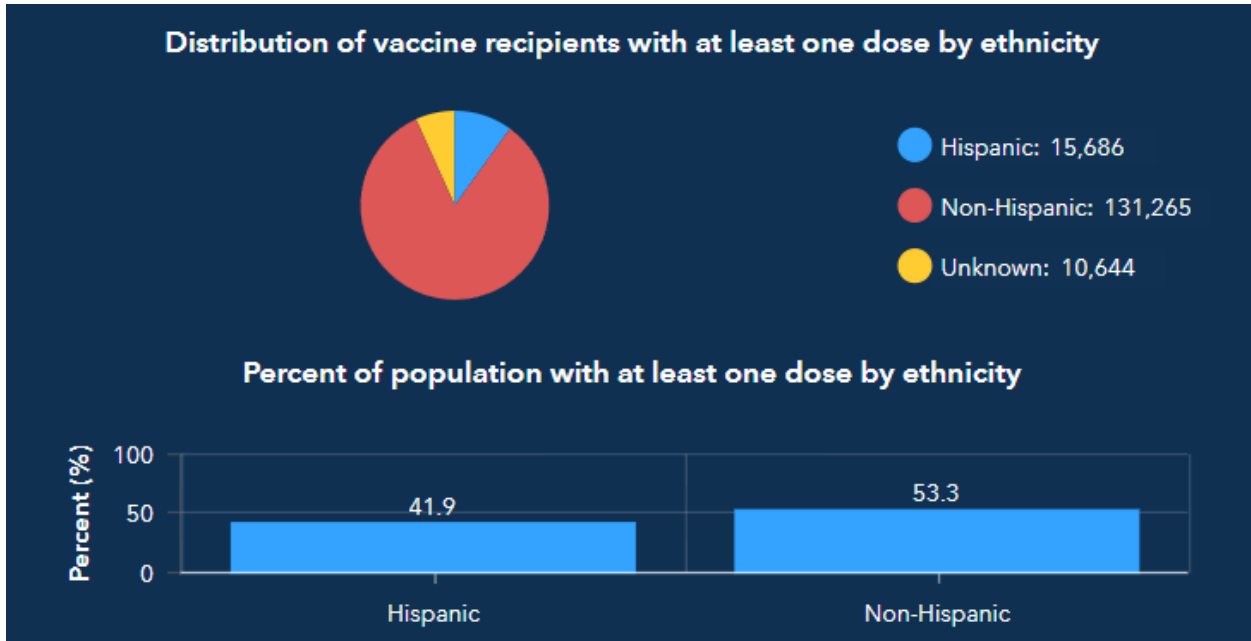


FIGURE 11. PROPORTION OF VACCINE RECIPIENTS WITH AT LEAST ONE DOSE BY RACE IN CLAYTON COUNTY

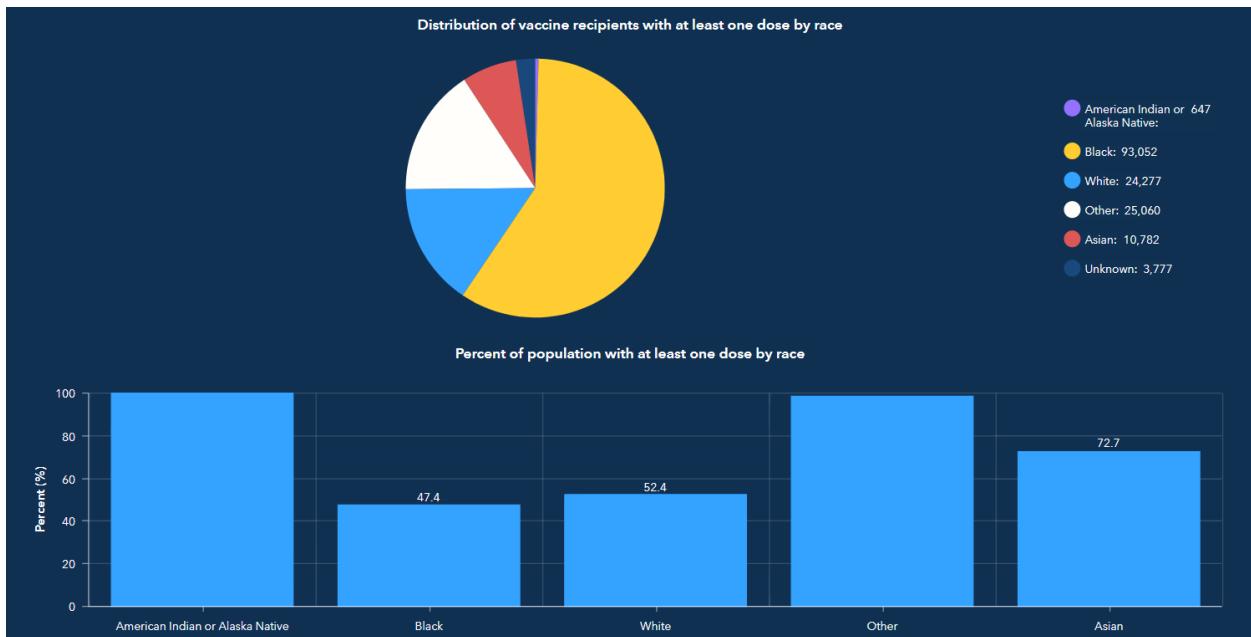


FIGURE 12. CLAYTON COUNTY BREAKTHROUGH CASES

