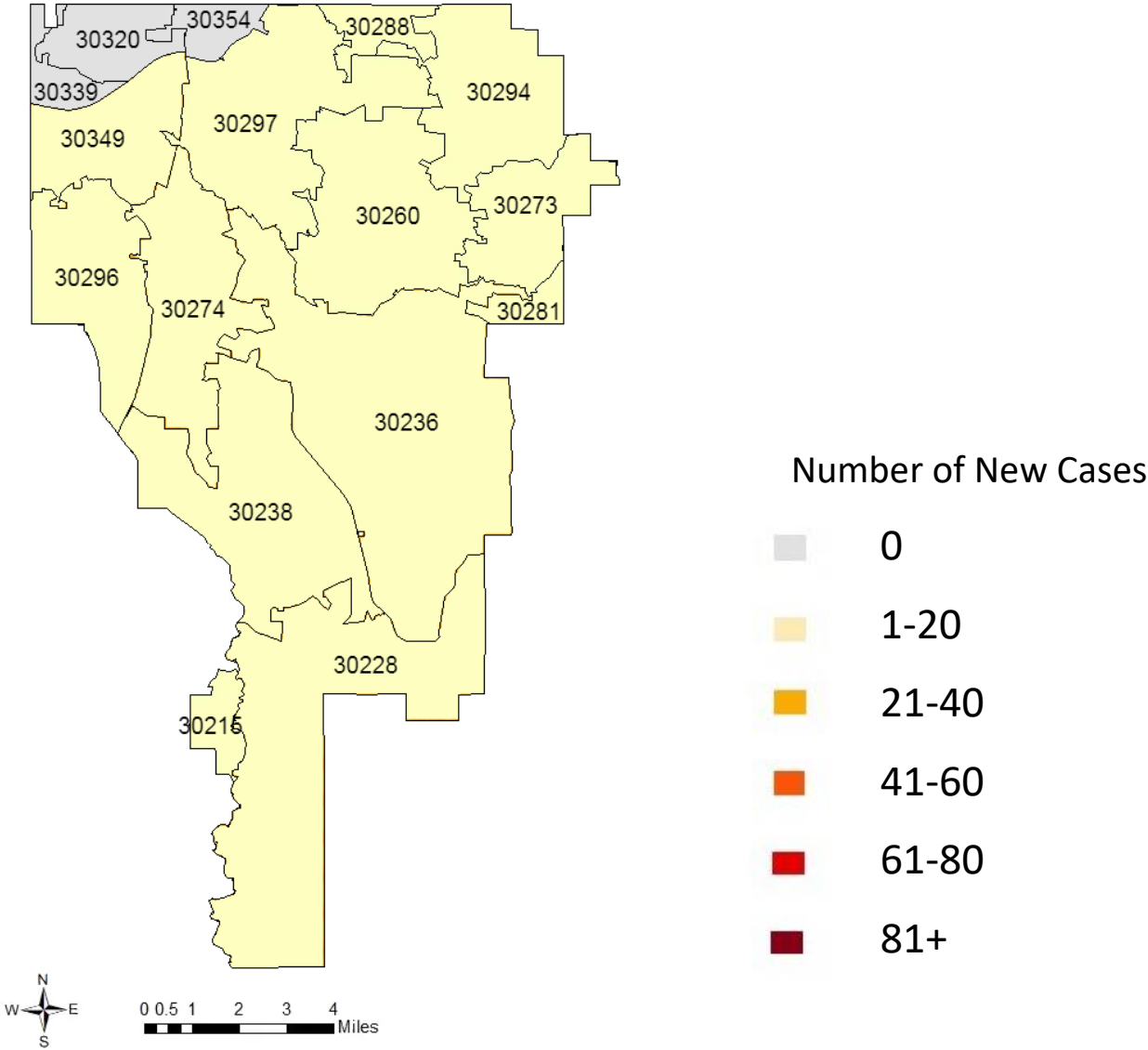


# COVID-19 SUMMARY REPORT FOR CLAYTON COUNTY

## Clayton County, Georgia From 11/21– 11/27/2022



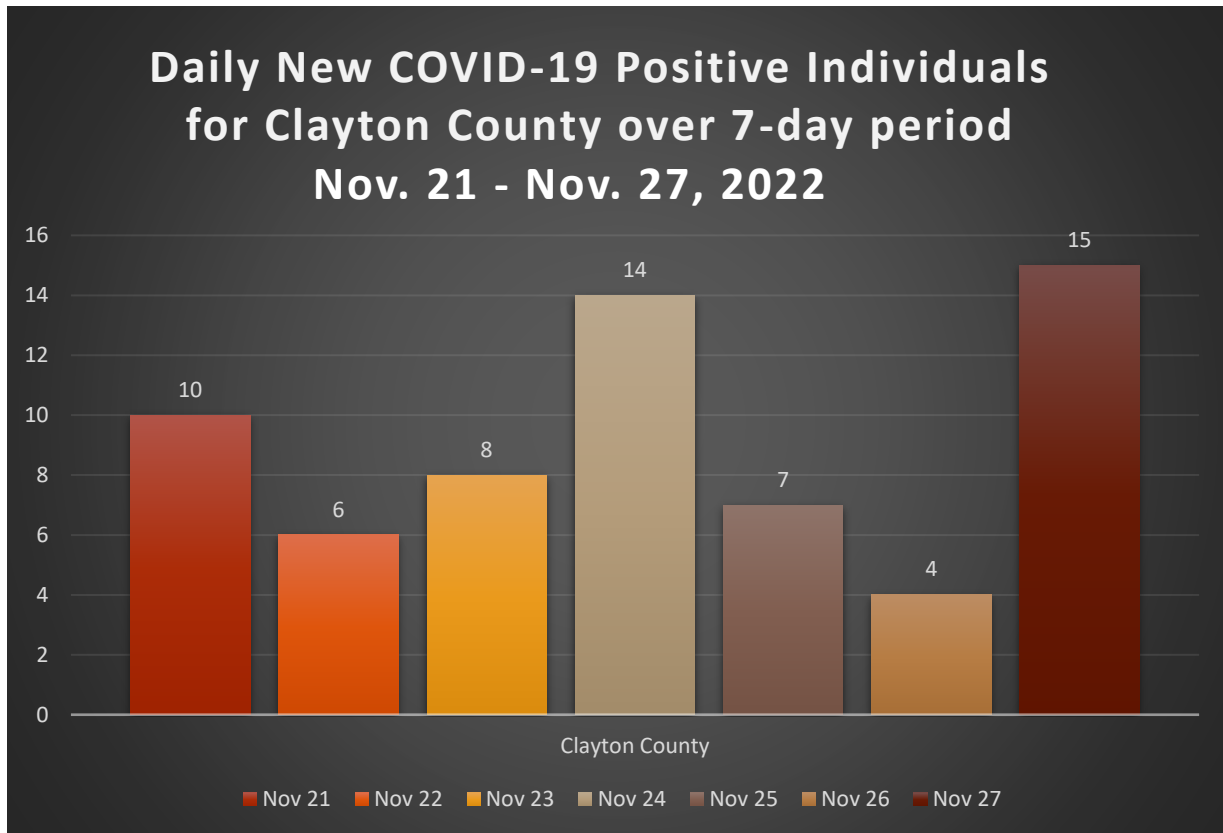
Created: November 28, 2022  
Source: Clayton County Health District and  
Georgia Department of Public Health, State  
Electronic Notifiable Disease Surveillance System

- As of November 27, 2022, Clayton County has 67,582 cases of 2019 Novel Coronavirus (COVID-19) and 976 confirmed deaths.
- There were 64 new positive COVID-19 tests reported in Clayton County from 11/21-11/27.
- Clayton County accounts for 3.0% of the total cases in Georgia.
- 10.9% of the positive cases in Clayton County have been hospitalized from 11/21-11/27.
- 0% of positive cases in Clayton County have died.
- The average percent of Positive PCR tests in Clayton County over the last 7 days is 4%.
- The total number of confirmed cases (PCR) per 100,000 people in Clayton County is 22,243.
- The total number of cases (PCR and Antigen) per 100,000 people in Clayton County is 24,520.
- In Clayton County 158,520 residents (56%) have received at least one dose of a COVID-19 vaccine and 142,566 (50%) have been fully vaccinated.
- As of November 27, 2022, Clayton County has 61,062 (42%) fully vaccinated individuals that have received an additional dose of vaccine.

**TABLE 1. CUMULATIVE COVID-19 CASES AND PERCENT CHANGE FOR CLAYTON COUNTY**

	Nov 21	Nov 22	Nov 23	Nov 24	Nov 25	Nov 26	Nov 27
Clayton County	67528	67534	67542	67556	67563	67567	67582
% Change	0.01%	0.02%	0.01%	0.02%	0.01%	0.01%	0.02%

**FIGURE 1. DAILY NEW COVID-19 POSITIVE INDIVIDUALS FOR CLAYTON COUNTY OVER 7-DAY PERIOD**





**TABLE 2. CUMULATIVE COVID-19 CASE COUNTS BY CITY AND %TOTAL OF CLAYTON COUNTY CASES**

City	Nov 21	Nov 22	Nov 23	Nov 24	Nov 25	Nov 26	Nov 27	% Total*
Jonesboro	20467	20469	20473	20477	20479	20481	20491	<b>30.3%</b>
Riverdale	14304	14304	14304	14306	14307	14307	14308	<b>21.2%</b>
Hampton	4576	4576	4577	4579	4579	4579	4579	<b>6.8%</b>
Forest Park	5825	5827	5827	5828	5830	5830	5830	<b>8.6%</b>
Morrow	5659	5660	5660	5661	5661	5661	5661	<b>8.4%</b>
Ellenwood	4127	4127	4127	4130	4131	4132	4133	<b>6.1%</b>
Rex	4372	4373	4375	4376	4376	4377	4377	<b>6.5%</b>
Atlanta	2827	2827	2827	2827	2827	2827	2828	<b>4.2%</b>
Lake City	307	307	307	307	307	307	307	<b>0.5%</b>
Stockbridge	984	984	985	985	985	985	985	<b>1.5%</b>
College Park	1584	1584	1584	1584	1585	1585	1585	<b>2.3%</b>
Conley	1114	1114	1114	1114	1114	1114	1114	<b>1.6%</b>
Fayetteville	695	695	695	695	695	695	697	<b>1.0%</b>
Lovejoy	238	238	238	238	238	238	238	<b>0.4%</b>
Unknown	449	449	449	449	449	449	449	<b>0.7%</b>
<b>Total</b>	<b>67528</b>	<b>67534</b>	<b>67542</b>	<b>67556</b>	<b>67563</b>	<b>67567</b>	<b>67582</b>	<b>100%</b>

**TABLE 3. DAILY NUMBER OF NEW COVID-19 CASES BY CITY**

City	Nov 21	Nov 22	Nov 23	Nov 24	Nov 25	Nov 26	Nov 27	Total
Jonesboro	4	2	4	4	2	2	10	<b>28</b>
Riverdale	2	0	0	2	1	0	1	<b>6</b>
Hampton	0	0	1	2	0	0	0	<b>3</b>
Forest Park	0	2	0	1	2	0	0	<b>5</b>
Morrow	0	1	0	1	0	0	0	<b>2</b>
Ellenwood	1	0	0	3	1	1	1	<b>7</b>
Rex	3	1	2	1	0	1	0	<b>8</b>
Atlanta	0	0	0	0	0	0	1	<b>1</b>
Lake City	0	0	0	0	0	0	0	<b>0</b>
Stockbridge	0	0	1	0	0	0	0	<b>1</b>
College Park	0	0	0	0	1	0	0	<b>1</b>
Conley	0	0	0	0	0	0	0	<b>0</b>
Fayetteville	0	0	0	0	0	0	2	<b>2</b>
Lovejoy	0	0	0	0	0	0	0	<b>0</b>
Unknown	0	0	0	0	0	0	0	<b>0</b>
<b>Total</b>	<b>10</b>	<b>6</b>	<b>8</b>	<b>14</b>	<b>7</b>	<b>4</b>	<b>15</b>	<b>64</b>

\*The percent total defines the percent of cases in Clayton County that comes from each city.



**TABLE 4. COVID-19 CASES HOSPITALIZATION AND DEATH COUNTS IN CLAYTON COUNTY**

	Previous 14 Days 10/31-11/13	Recent 14 Days 11/14-11/27	% Change
Needed Hospitalization	10	12	<b>20.0%</b>

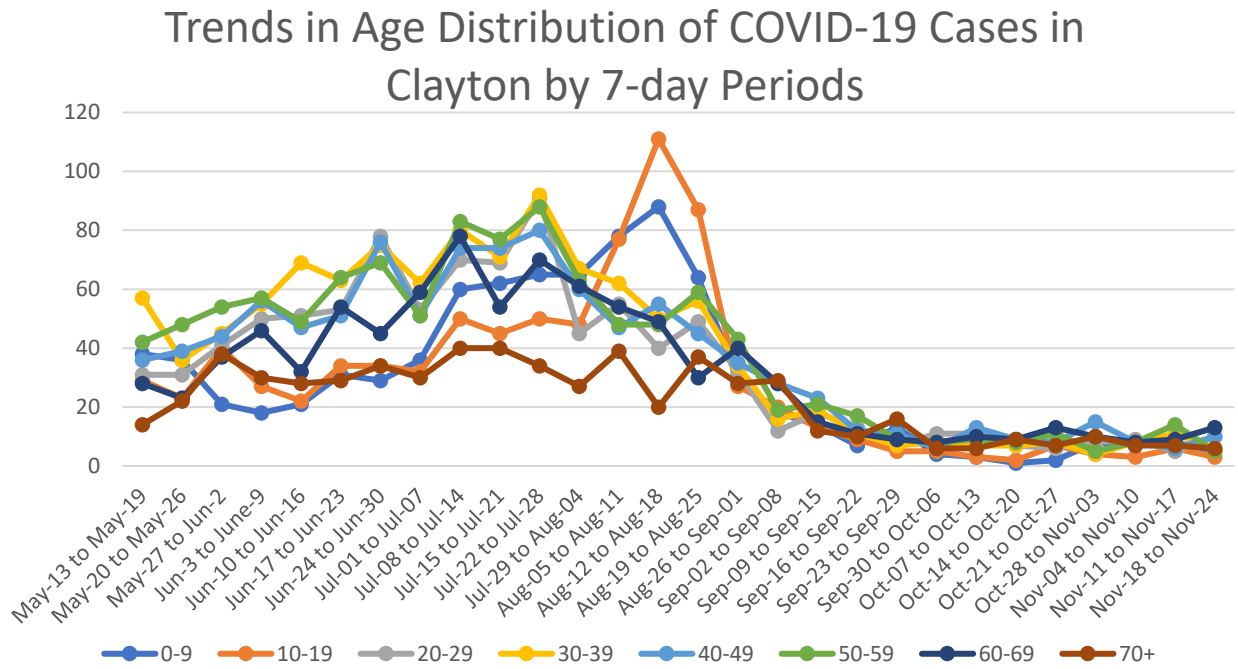
  

	Total Count	% of Cases That Died
Died	970	<b>1.4%</b>

**TABLE 5. DEMOGRAPHIC DATA OF COVID-19 CASES IN CLAYTON COUNTY**

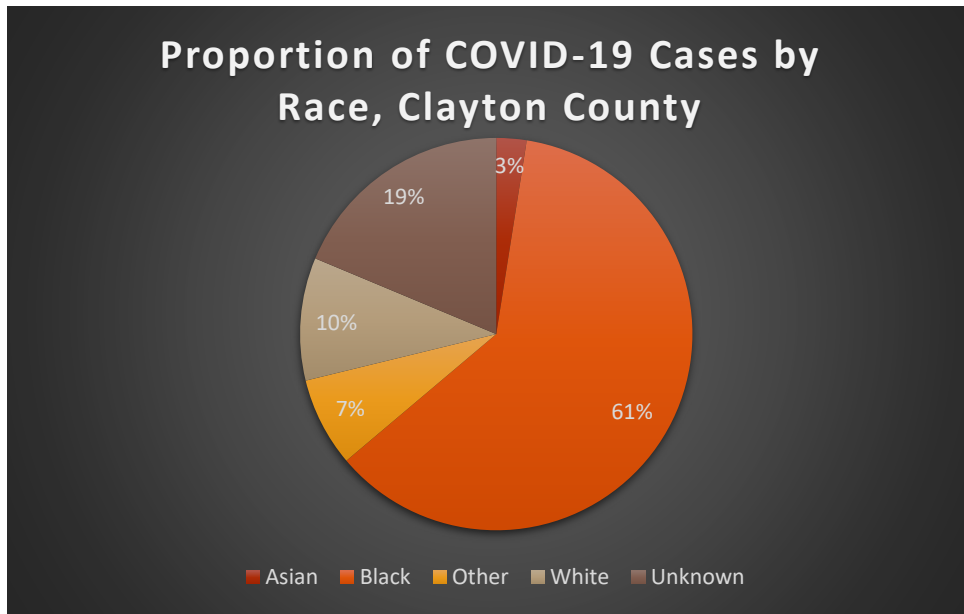
Demographic	Count	%
<b>Gender</b>		
Female	39208	<b>58.0%</b>
Male	28089	<b>41.6%</b>
Unknown	285	<b>0.4%</b>
<b>Age Group</b>		
0-9	5798	<b>8.6%</b>
10-19	8537	<b>12.6%</b>
20-29	11641	<b>17.2%</b>
30-39	12423	<b>18.4%</b>
40-49	10489	<b>15.5%</b>
50-59	9302	<b>13.8%</b>
60-69	5902	<b>8.74%</b>
70+	3462	<b>5.12%</b>
<b>Race</b>		
Asian	1681	<b>2.5%</b>
Black	41458	<b>61.3%</b>
Other	4972	<b>7.4%</b>
White	6836	<b>10.1%</b>
Unknown	12635	<b>18.7%</b>
<b>Ethnicity</b>		
Hispanic/Latino	8348	<b>12.4%</b>
Non-Hispanic/Latino	45053	<b>66.7%</b>
Unknown/Not Specified	14181	<b>21.0%</b>

## FIGURE 2. DISTRIBUTION OF POSITIVE CASES BY AGE OVER 7-DAY PERIODS

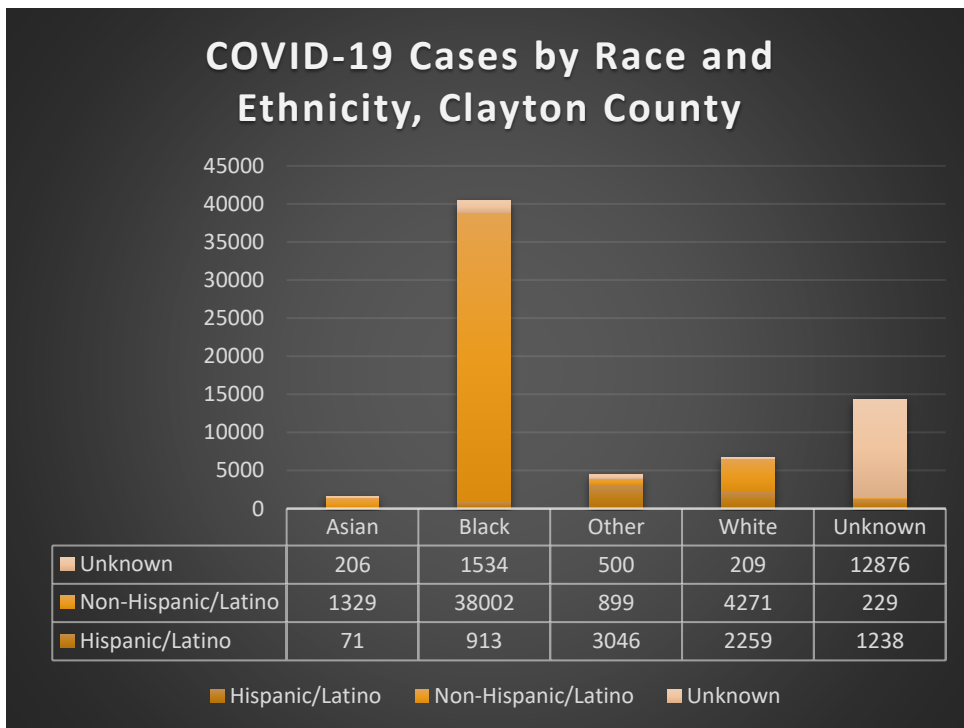


Graphs shown reflect the number of confirmed cases by age using the date of first positive sample collection. All data reported are preliminary and subject to change.

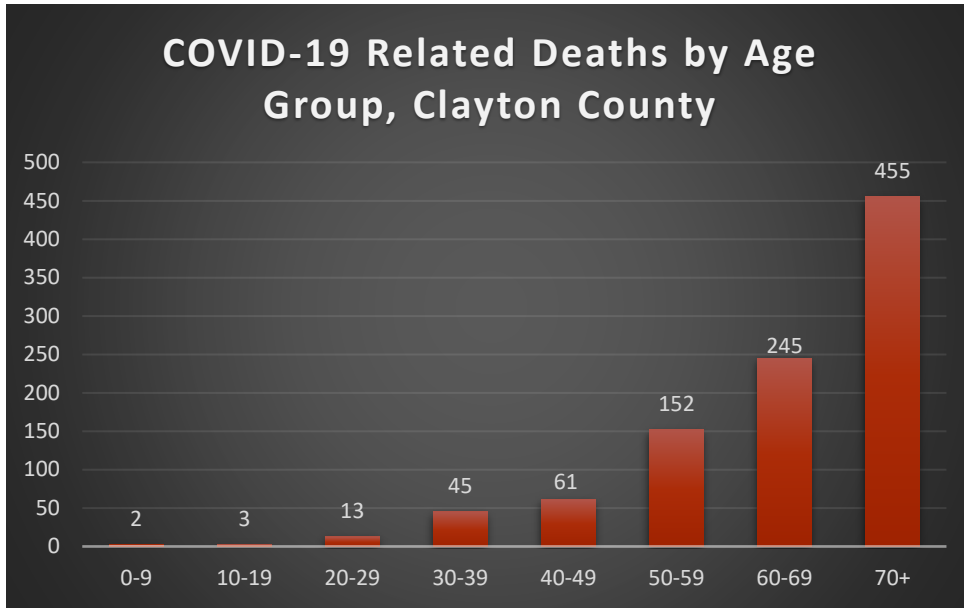
**FIGURE 3. PROPORTION OF COVID-19 CASES BY RACE IN CLAYTON COUNTY**



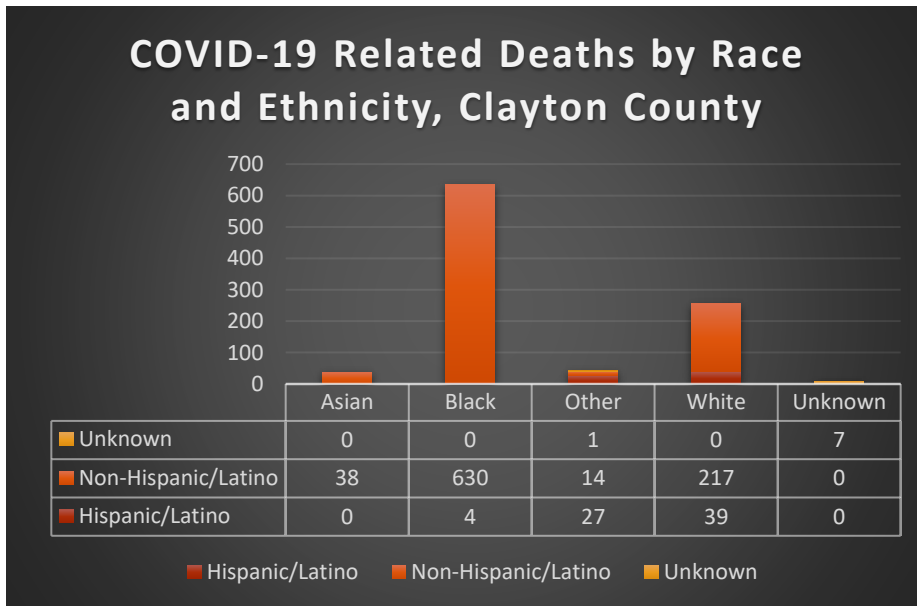
**FIGURE 4. COVID-19 CASES BY RACE AND ETHNICITY IN CLAYTON COUNTY**



**FIGURE 5. COVID-19 RELATED DEATHS BY AGE GROUP  
CLAYTON COUNTY**



**FIGURE 6. COVID-19 RELATED DEATHS BY RACE AND  
ETHNICITY IN CLAYTON COUNTY**



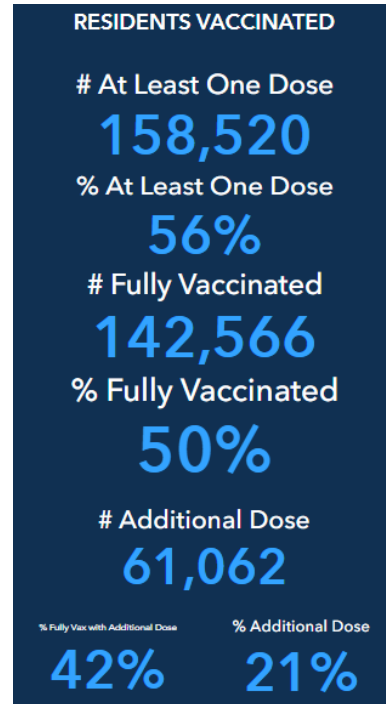
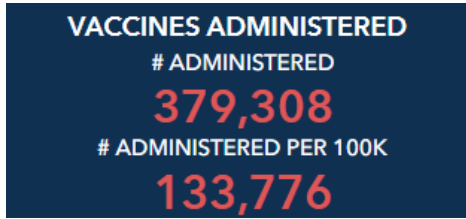


**TABLE 6. COVID-19 CASE COUNTS BY ZIP CODE AND CHANGE IN TWO MOST RECENT 14-DAY PERIODS**

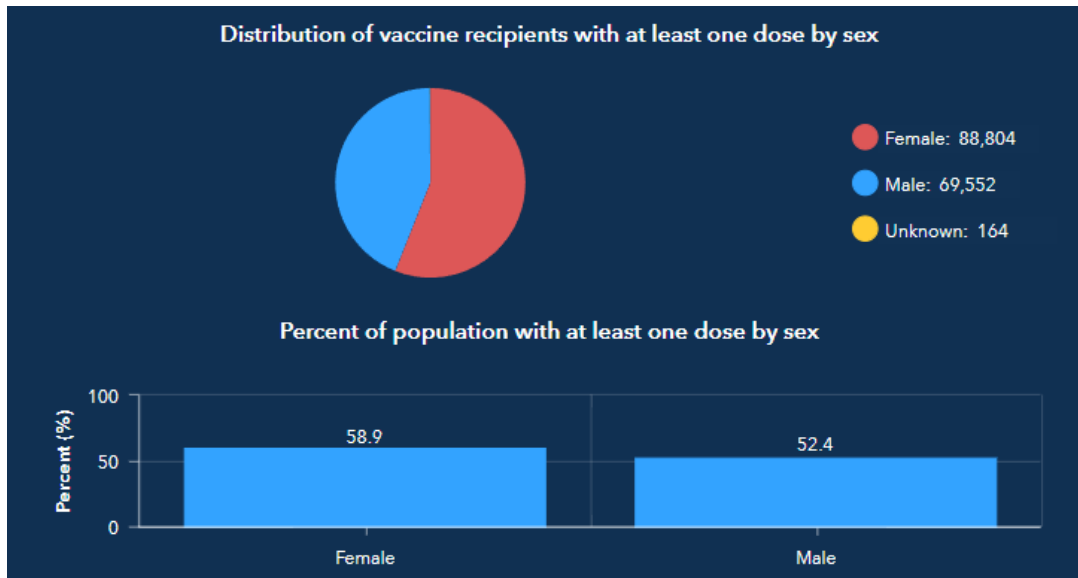
Zip Code	Previous 11/20	Current 11/27	Percent of Total	Previous 14 Days 10/31-11/13	Recent 14 Days 11/14-11/27	Percent Change in 14-Day Periods
<b>All Clayton</b>	67518	67582	100.0%	125	145	<b>16%</b>
<b>30236</b>	10321	10338	15.3%	19	26	<b>37%</b>
<b>30238</b>	9110	9121	13.5%	22	26	<b>18%</b>
<b>30274</b>	8125	8130	12.0%	15	21	<b>40%</b>
<b>30260</b>	5653	5655	8.4%	11	9	<b>-18%</b>
<b>30297</b>	5598	5603	8.3%	13	9	<b>-31%</b>
<b>30296</b>	5424	5425	8.0%	11	5	<b>-55%</b>
<b>30273</b>	4126	4134	6.1%	3	9	<b>200%</b>
<b>30294</b>	3961	3968	5.9%	6	14	<b>133%</b>
<b>30349</b>	4167	4169	6.2%	6	6	<b>0%</b>
<b>30228</b>	4408	4411	6.5%	15	15	<b>0%</b>
<b>30288</b>	1055	1055	1.6%	1	0	<b>-100%</b>
<b>30281</b>	951	952	1.4%	1	2	<b>100%</b>
<b>30215</b>	673	675	1.0%	2	3	<b>50%</b>
<b>30250</b>	213	213	0.3%	0	0	<b>NA</b>
<b>30237</b>	110	110	0.2%	0	0	<b>NA</b>
<b>30326</b>	35	35	0.1%	0	0	<b>NA</b>
<b>30287</b>	19	19	0.0%	0	0	<b>NA</b>
<b>30328</b>	15	15	0.0%	0	0	<b>NA</b>
<b>30298</b>	37	37	0.1%	0	0	<b>NA</b>

Note: Data cleaning may lead to reassignment of cases from one territory to another based on corrected addresses which may appear as “decreases” when compared to previous counts. Zip codes with fewer than 5 cases reported were omitted from the table.

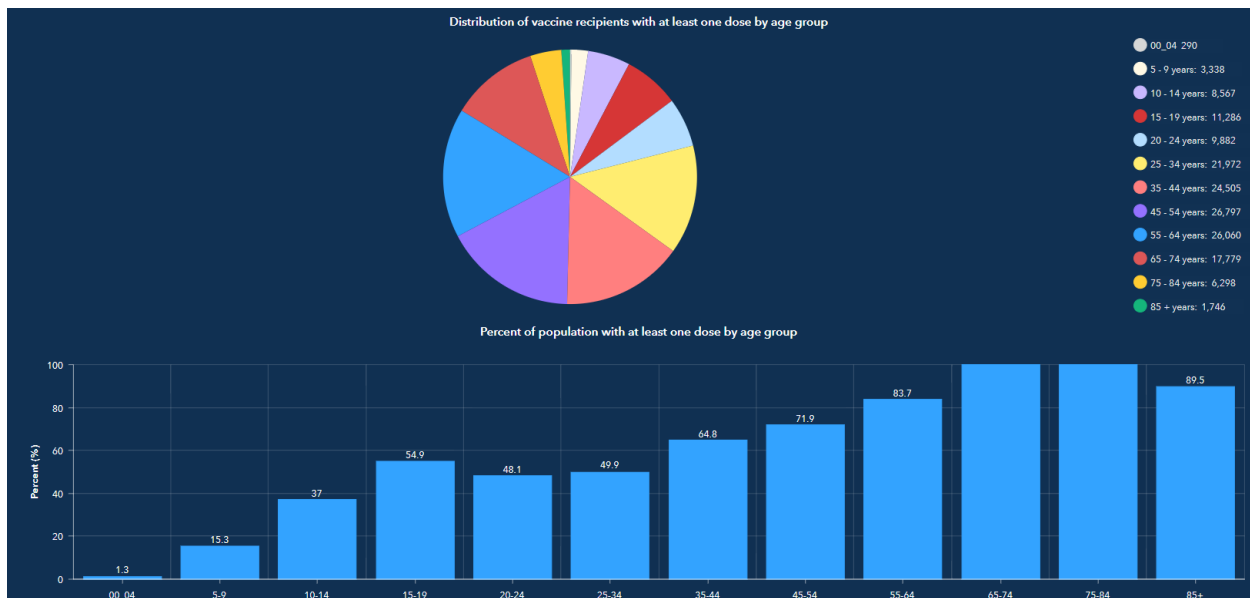
## FIGURE 7: CLAYTON COUNTY VACCINE NUMBERS AS OF 11/27/2022



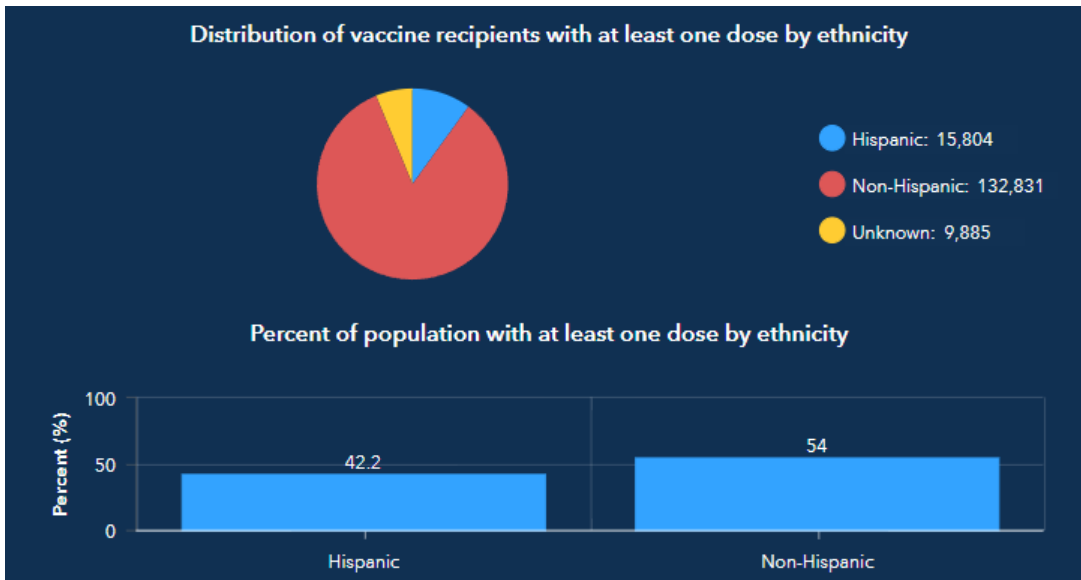
**FIGURE 8. PROPORTION OF VACCINE RECIPIENTS WITH AT LEAST ONE DOSE BY SEX IN CLAYTON COUNTY**



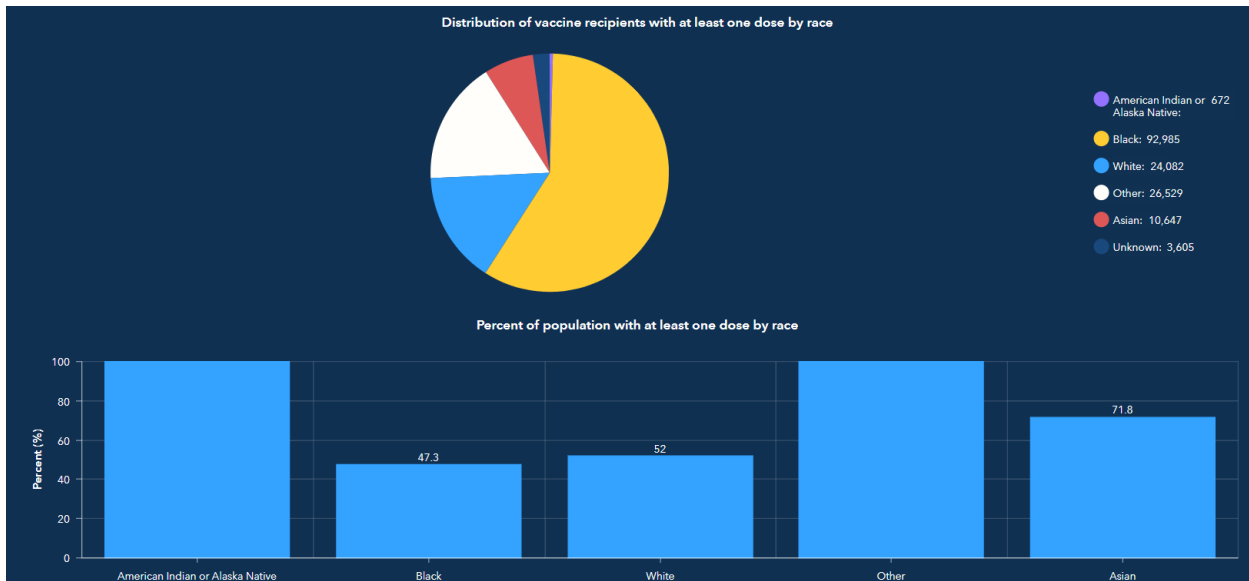
**FIGURE 9. PROPORTION OF VACCINE RECIPIENTS WITH AT LEAST ONE DOSE BY AGE IN CLAYTON COUNTY**



**FIGURE 10. PROPORTION OF VACCINE RECIPIENTS WITH AT LEAST ONE DOSE BY ETHNICITY IN CLAYTON COUNTY**



**FIGURE 11. PROPORTION OF VACCINE RECIPIENTS WITH AT LEAST ONE DOSE BY RACE IN CLAYTON COUNTY**



**FIGURE 12. CLAYTON COUNTY BREAKTHROUGH CASES**

