

## **COVID-19 SUMMARY REPORT FOR CLAYTON COUNTY**

### **Clayton County, Georgia From 2/20– 2/26/2023**

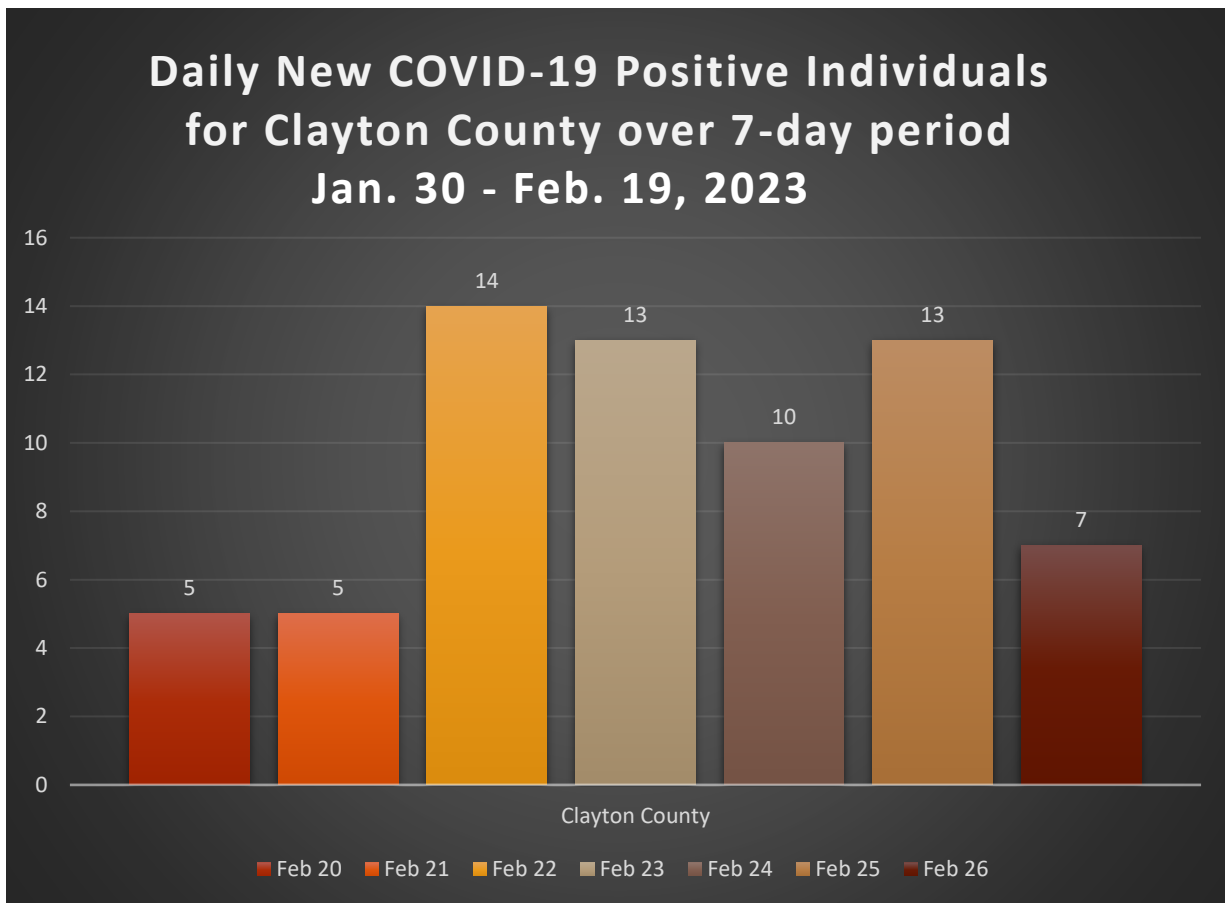
Created: February 26, 2023  
Source: Clayton County Health District and  
Georgia Department of Public Health, State  
Electronic Notifiable Disease Surveillance System

- As of February 26, 2023, Clayton County has 69,979 cases of 2019 Novel Coronavirus (COVID-19) and 998 confirmed deaths.
- There were 67 new positive COVID-19 tests reported in Clayton County from 2/20-2/26.
- Clayton County accounts for approximately 3.0% of the total cases in Georgia.
- 11.9% of the positive cases in Clayton County have been hospitalized from 2/20-2/26.
- 1.5 % of positive cases in Clayton County have died from 2/20-2/26,1 death.
- The average percent of Positive PCR tests in Clayton County over the last 7 days is 13.1%.
- The total number of confirmed cases (PCR) per 100,000 people in Clayton County is 23,014.
- The total number of cases (PCR and Antigen) per 100,000 people in Clayton County is 25,504.
- In Clayton County 159,217 residents (56%) have received at least one dose of a COVID-19 vaccine and 143,388 (51%) have been fully vaccinated.
- As February 26, 2023, Clayton County has 63,199 (43%) fully vaccinated individuals that have received an additional dose of vaccine.

**TABLE 1. CUMULATIVE COVID-19 CASES AND PERCENT CHANGE FOR CLAYTON COUNTY**

	Feb 20	Feb 21	Feb 22	Feb 23	Feb 24	Feb 25	Feb 26
Clayton County	69917	69922	69936	69949	69959	69972	69979
% Change	0.01%	0.02%	0.02%	0.02%	0.01%	0.02%	0.01%

**FIGURE 1. DAILY NEW COVID-19 POSITIVE INDIVIDUALS FOR CLAYTON COUNTY OVER 7-DAY PERIOD**



**TABLE 2. CUMULATIVE COVID-19 CASE COUNTS BY CITY AND %TOTAL OF CLAYTON COUNTY CASES**

City	Feb 20	Feb 21	Feb 22	Feb 23	Feb 24	Feb 25	Feb 26	% Total*
Jonesboro	21204	21207	21212	21215	21222	21225	21227	<b>30.1%</b>
Riverdale	14789	14789	14791	14794	14796	14800	14800	<b>21.1%</b>
Hampton	4814	4814	4818	4821	4822	4824	4824	<b>6.9%</b>
Forest Park	5959	5959	5959	5960	5960	5960	5961	<b>8.5%</b>
Morrow	5833	5833	5834	5837	5837	5837	5837	<b>8.3%</b>
Ellenwood	4299	4299	4299	4299	4299	4299	4302	<b>6.1%</b>
Rex	4510	4510	4510	4510	4510	4510	4511	<b>6.4%</b>
Atlanta	2915	2916	2917	2917	2917	2920	2920	<b>4.2%</b>
Lake City	312	312	313	313	313	313	313	<b>0.4%</b>
Stockbridge	1036	1037	1037	1037	1037	1037	1037	<b>1.5%</b>
College Park	1609	1609	1609	1609	1609	1609	1609	<b>2.3%</b>
Conley	1160	1160	1160	1160	1160	1161	1161	<b>1.7%</b>
Fayetteville	735	735	735	735	735	735	735	<b>1.1%</b>
Lovejoy	240	240	240	240	240	240	240	<b>0.3%</b>
Unknown	502	502	502	502	502	502	502	<b>0.7%</b>
<b>Total</b>	<b>69917</b>	<b>69922</b>	<b>69936</b>	<b>69949</b>	<b>69959</b>	<b>69972</b>	<b>69979</b>	<b>100%</b>

**TABLE 3. DAILY NUMBER OF NEW COVID-19 CASES BY CITY**

City	Feb 20	Feb 21	Feb 22	Feb 23	Feb 24	Feb 25	Feb 26	Total
Jonesboro	2	3	5	3	7	3	2	<b>25</b>
Riverdale	2	0	2	3	2	4	0	<b>13</b>
Hampton	0	0	4	3	1	2	0	<b>10</b>
Forest Park	0	0	0	1	0	0	1	<b>2</b>
Morrow	1	0	1	3	0	0	0	<b>5</b>
Ellenwood	0	0	0	0	0	0	3	<b>3</b>
Rex	0	0	0	0	0	0	1	<b>1</b>
Atlanta	0	1	1	0	0	3	0	<b>5</b>
Lake City	0	0	1	0	0	0	0	<b>1</b>
Stockbridge	0	1	0	0	0	0	0	<b>1</b>
College Park	0	0	0	0	0	0	0	<b>0</b>
Conley	0	0	0	0	0	1	0	<b>1</b>
Fayetteville	0	0	0	0	0	0	0	<b>0</b>
Lovejoy	0	0	0	0	0	0	0	<b>0</b>
Unknown	0	0	0	0	0	0	0	<b>0</b>
<b>Total</b>	<b>5</b>	<b>5</b>	<b>14</b>	<b>13</b>	<b>10</b>	<b>13</b>	<b>7</b>	<b>67</b>

\*The percent total defines the percent of cases in Clayton County that comes from each city.

**TABLE 4. COVID-19 CASES HOSPITALIZATION AND DEATH COUNTS IN CLAYTON COUNTY**

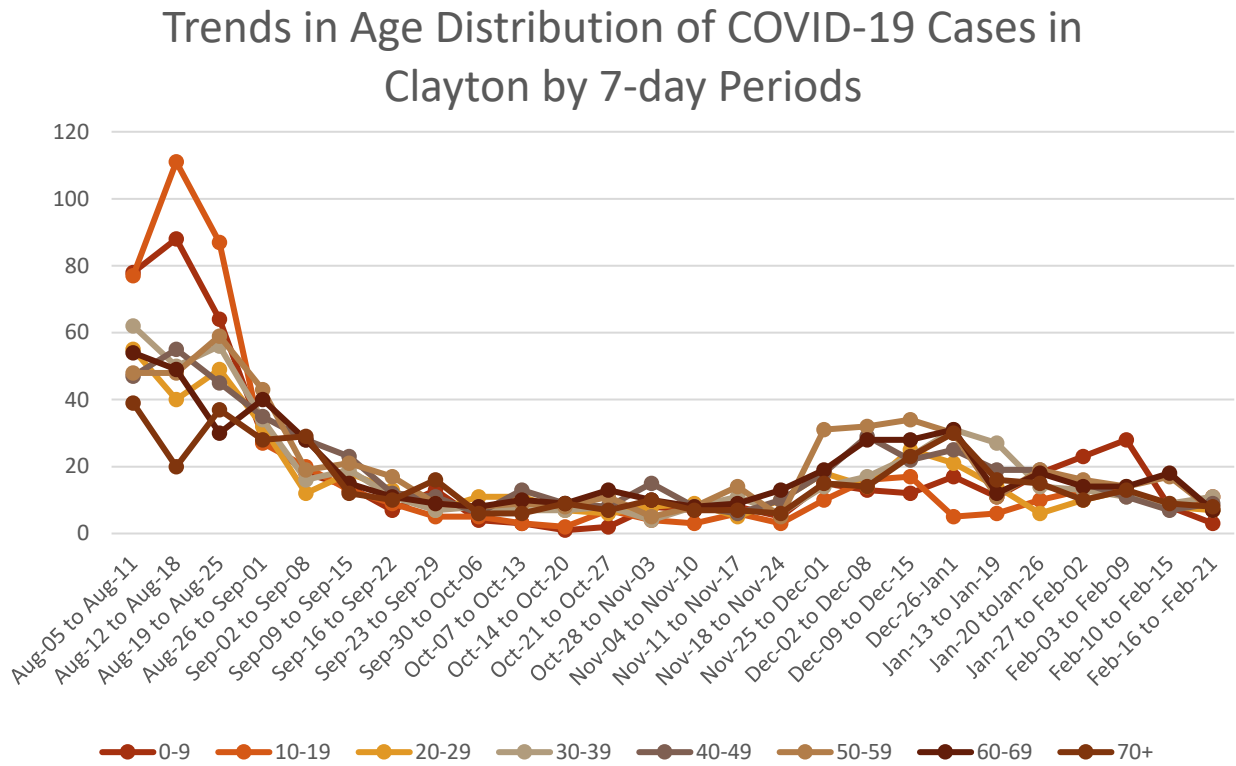
	Previous 14 Days 1/30-2/12	Recent 14 Days 2/13- 2/26	% Change
Needed Hospitalization	20	15	<b>-25.0%</b>

	Total Count	% of Cases That Died
Died	998	<b>1.4%</b>

**TABLE 5. DEMOGRAPHIC DATA OF COVID-19 CASES IN CLAYTON COUNTY**

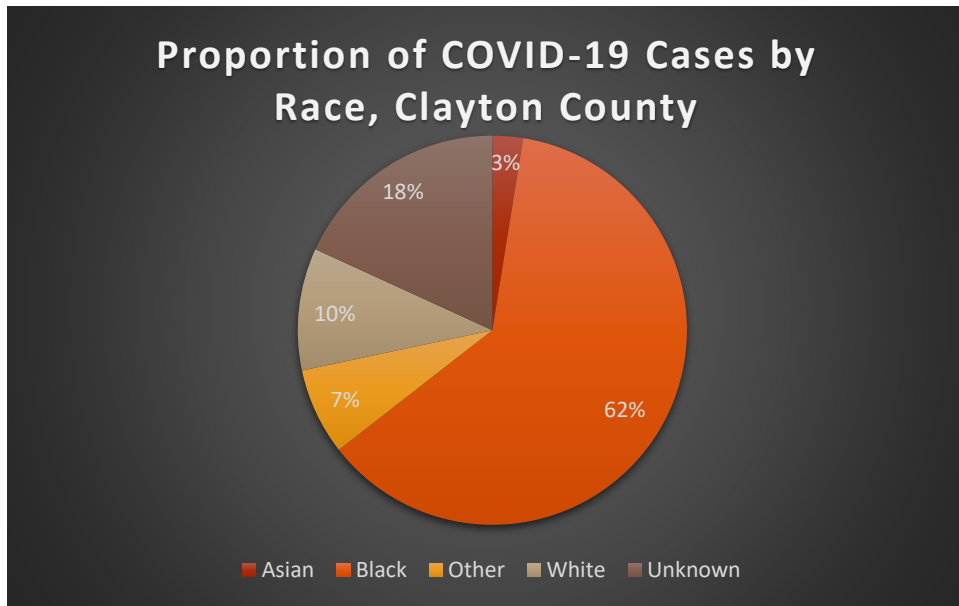
Demographic	Count	%
Gender		
Female	40676	58.2%
Male	28983	41.4%
Unknown	286	0.4%
Age Group		
0-9	6025	8.6%
10-19	8725	12.5%
20-29	11912	17.0%
30-39	12740	18.2%
40-49	10836	15.5%
50-59	9687	13.9%
60-69	6251	8.94%
70+	3740	5.35%
Race		
Asian	1798	2.5%
Black	44034	61.9%
Other	5134	7.2%
White	7221	10.2%
Unknown	12916	18.2%
Ethnicity		
Hispanic/Latino	8711	12.4%
Non-Hispanic/Latino	47849	68.4%
Unknown/Not Specified	13419	19.2%

**FIGURE 2. DISTRIBUTION OF POSITIVE CASES BY AGE OVER 7-DAY PERIODS**

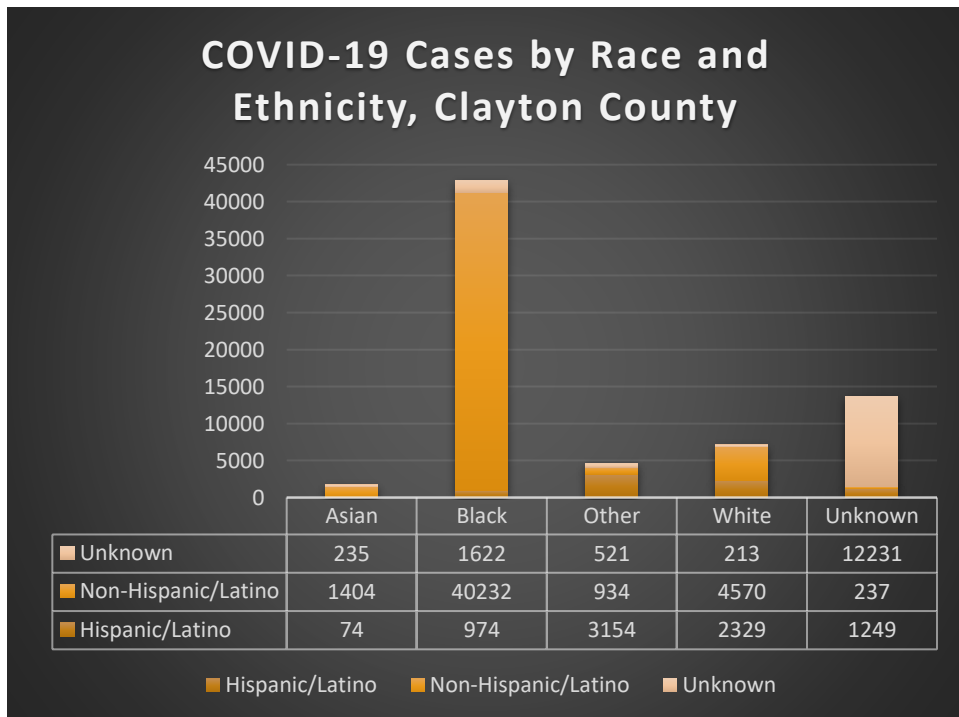


Graphs shown reflect the number of confirmed cases by age using the date of first positive sample collection. All data reported are preliminary and subject to change.

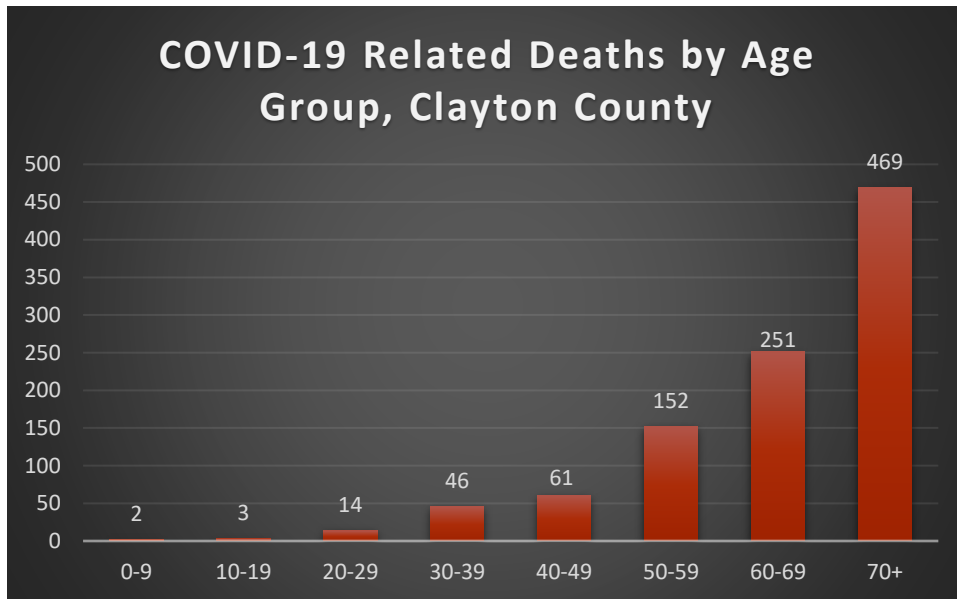
**FIGURE 3. PROPORTION OF COVID-19 CASES BY RACE IN CLAYTON COUNTY**



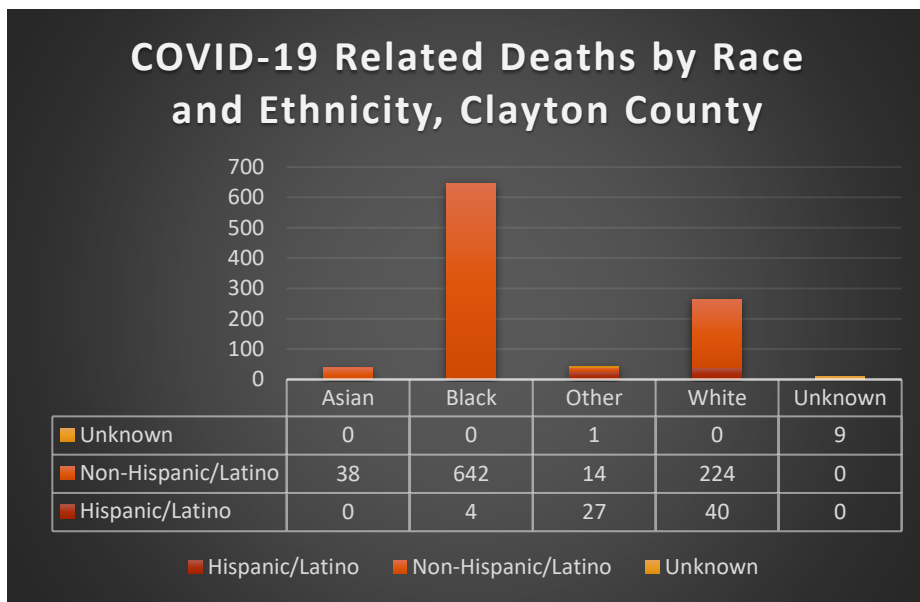
**FIGURE 4. COVID-19 CASES BY RACE AND ETHNICITY IN CLAYTON COUNTY**



**FIGURE 5. COVID-19 RELATED DEATHS BY AGE GROUP  
CLAYTON COUNTY**



**FIGURE 6. COVID-19 RELATED DEATHS BY RACE AND  
ETHNICITY IN CLAYTON COUNTY**





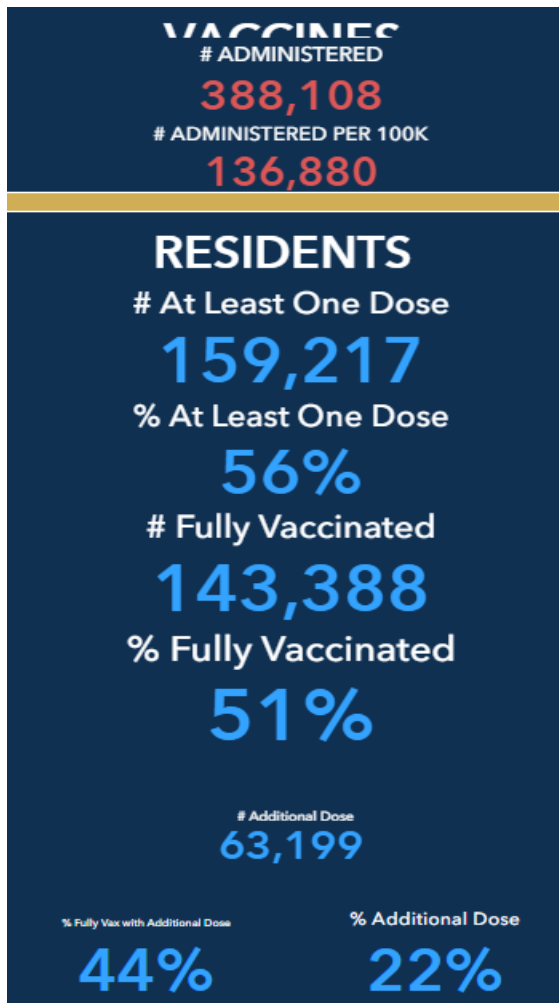
**TABLE 6. COVID-19 CASE COUNTS BY ZIP CODE AND CHANGE IN TWO MOST RECENT 14-DAY PERIODS**

Zip Code	Previous 2/19	Current 2/26	Percent of Total	Previous 14 Days 1/30/-2/12	Recent 14 Days 2/13-2/26	Percent Change in 14-Day Periods
<b>All</b>				384	406	
<b>Clayton</b>	69911	69979	100.0%			6%
<b>30236</b>	10561	10599	15.1%	67	41	-39%
<b>30238</b>	9397	9442	13.5%	59	41	-31%
<b>30274</b>	8292	8329	11.9%	41	27	-34%
<b>30260</b>	5764	5794	8.3%	23	34	48%
<b>30297</b>	5693	5705	8.2%	25	13	-48%
<b>30296</b>	5572	5605	8.0%	33	34	3%
<b>30273</b>	4218	4235	6.1%	19	25	32%
<b>30294</b>	4079	4104	5.9%	26	17	-35%
<b>30349</b>	4243	4266	6.1%	19	16	-16%
<b>30228</b>	4583	4612	6.6%	41	20	-51%
<b>30288</b>	1083	1084	1.5%	9	3	-67%
<b>30281</b>	987	991	1.4%	8	1	-88%
<b>30215</b>	714	715	1.0%	12	2	-83%
<b>30250</b>	213	215	0.3%	0	1	NA
<b>30237</b>	113	113	0.2%	0	1	NA
<b>30326</b>	35	35	0.1%	0	0	NA
<b>30287</b>	2	22	0.0%	1	0	-100%
<b>30328</b>	16	16	0.0%	0	0	NA
<b>30298</b>	37	37	0.1%	0	0	NA

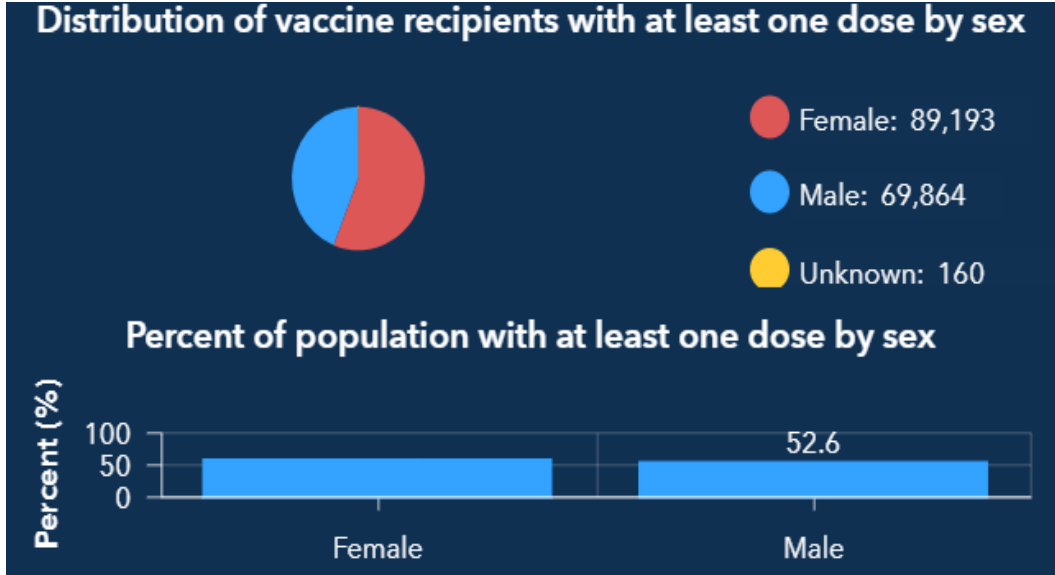
Note: Data cleaning may lead to reassignment of cases from one territory to another based on corrected addresses which may appear as “decreases” when compared to previous counts. Zip codes with fewer than 5 cases reported were omitted from the table.



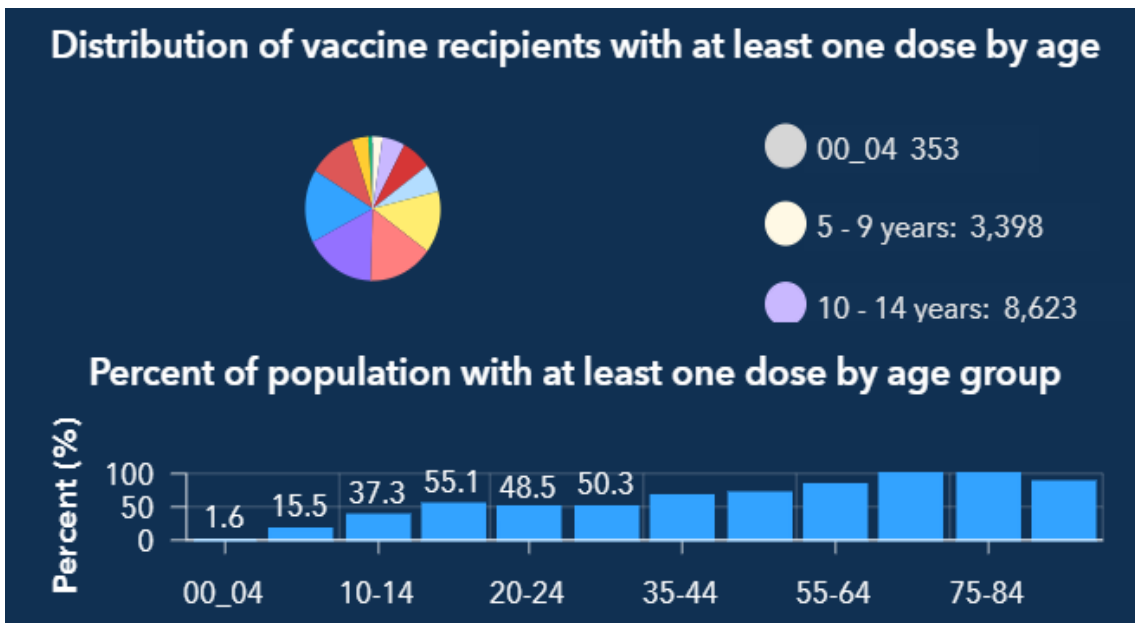
## FIGURE 7: CLAYTON COUNTY VACCINE NUMBERS AS OF 2/20-2/26/2023



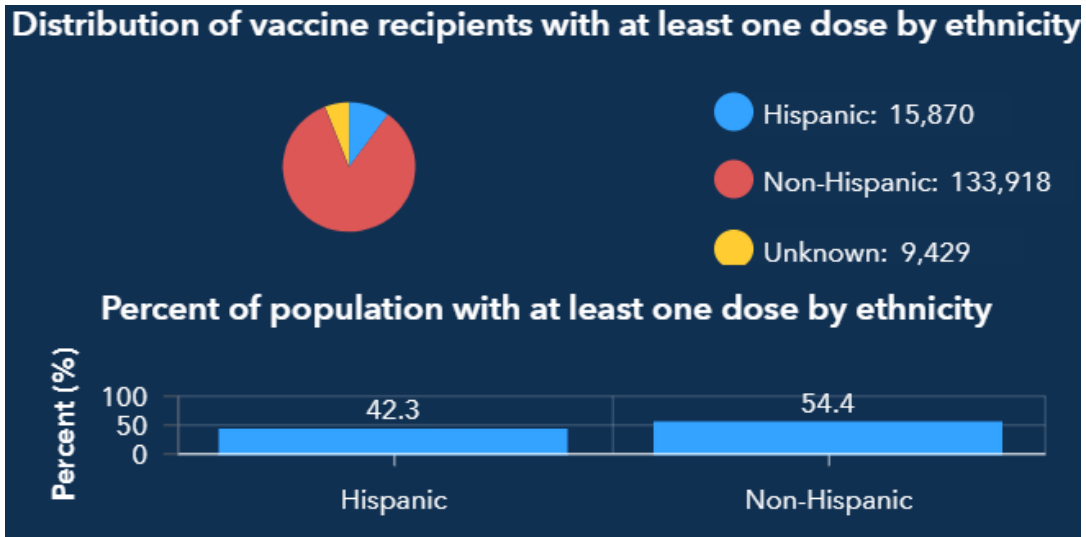
**FIGURE 8. PROPORTION OF VACCINE RECIPIENTS WITH AT LEAST ONE DOSE BY SEX IN CLAYTON COUNTY**



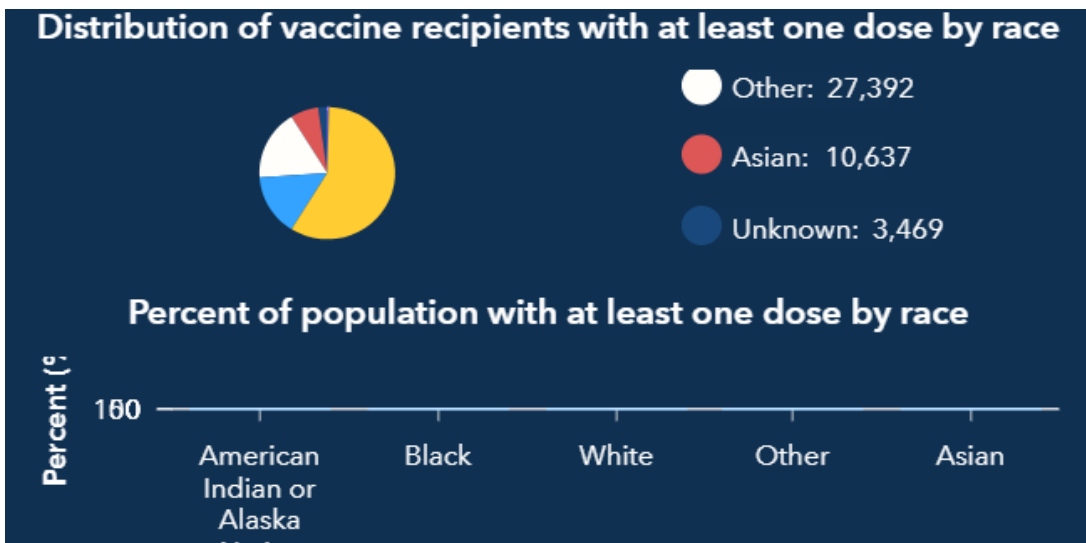
**FIGURE 9. PROPORTION OF VACCINE RECIPIENTS WITH AT LEAST ONE DOSE BY AGE IN CLAYTON COUNTY**



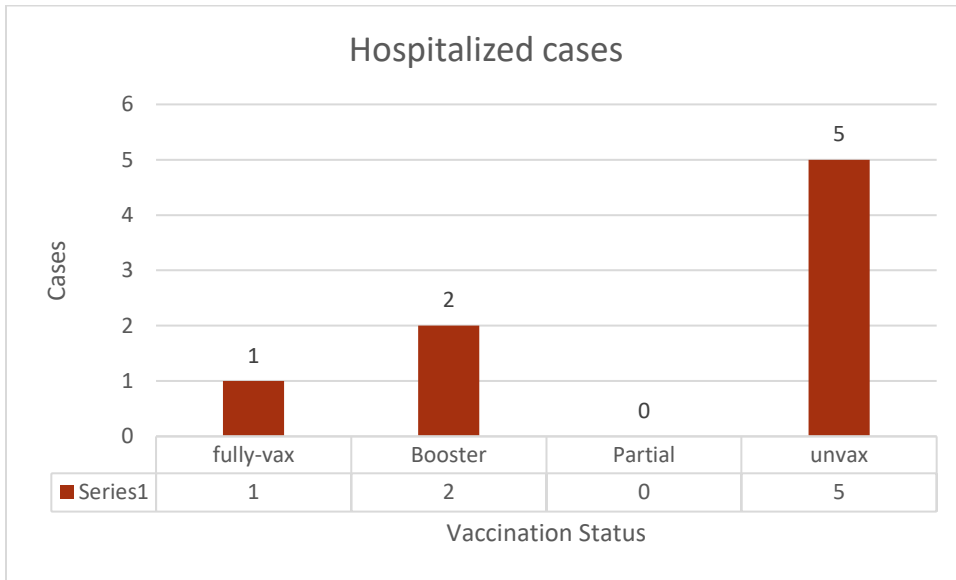
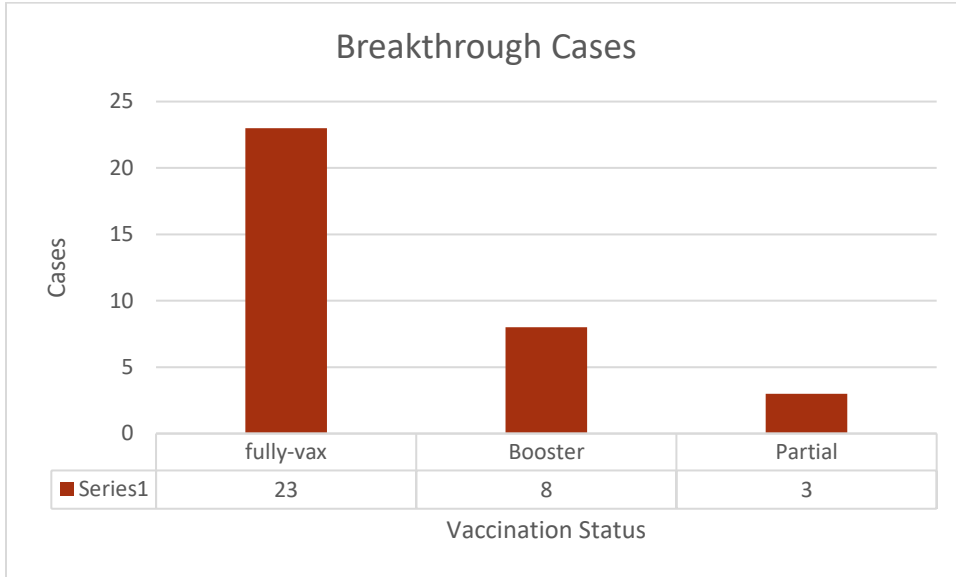
**FIGURE 10. PROPORTION OF VACCINE RECIPIENTS WITH AT LEAST ONE DOSE BY ETHNICITY IN CLAYTON COUNTY**



**FIGURE 11. PROPORTION OF VACCINE RECIPIENTS WITH AT LEAST ONE DOSE BY RACE IN CLAYTON COUNTY**



**FIGURE 12. CLAYTON COUNTY BREAKTHROUGH CASES**





GEORGIA DEPARTMENT OF PUBLIC HEALTH

Clayton County Health District