

COVID-19 SUMMARY REPORT FOR CLAYTON COUNTY

Clayton County, Georgia From 2/27– 3/05/2023

Created: March 05, 2023
Source: Clayton County Health District and
Georgia Department of Public Health, State
Electronic Notifiable Disease Surveillance System

- As of March 05, 2023, Clayton County has 70,056 cases of 2019 Novel Coronavirus (COVID-19) and 998 confirmed deaths.
- There were 54 new positive COVID-19 tests reported in Clayton County from 2/27-03/05.
- Clayton County accounts for approximately 3.0% of the total cases in Georgia.
- 9.3% of the positive cases in Clayton County have been hospitalized from 2/27-3/05.
- 0 % of positive cases in Clayton County have died from 2/27-03/05.
- The average percent of Positive PCR tests in Clayton County over the last 7 days is 10.9%.
- The total number of confirmed cases (PCR) per 100,000 people in Clayton County is 23,043.
- The total number of cases (PCR and Antigen) per 100,000 people in Clayton County is 25,537.
- In Clayton County 159,254 residents (56%) have received at least one dose of a COVID-19 vaccine and 143,431 (51%) have been fully vaccinated.
- As March 05, 2023, Clayton County has 63,252 (44%) fully vaccinated individuals that have received an additional dose of vaccine.

TABLE 1. CUMULATIVE COVID-19 CASES AND PERCENT CHANGE FOR CLAYTON COUNTY

	Feb 27	Feb 28	Mar 01	Mar 02	Mar 03	Mar 04	Mar 05
Clayton County	70010	70020	70029	70036	70046	70052	70056
% Change	0.01%	0.03%	0.01%	0.01%	0.01%	0.01%	0.01%

FIGURE 1. DAILY NEW COVID-19 POSITIVE INDIVIDUALS FOR CLAYTON COUNTY OVER 7-DAY PERIOD

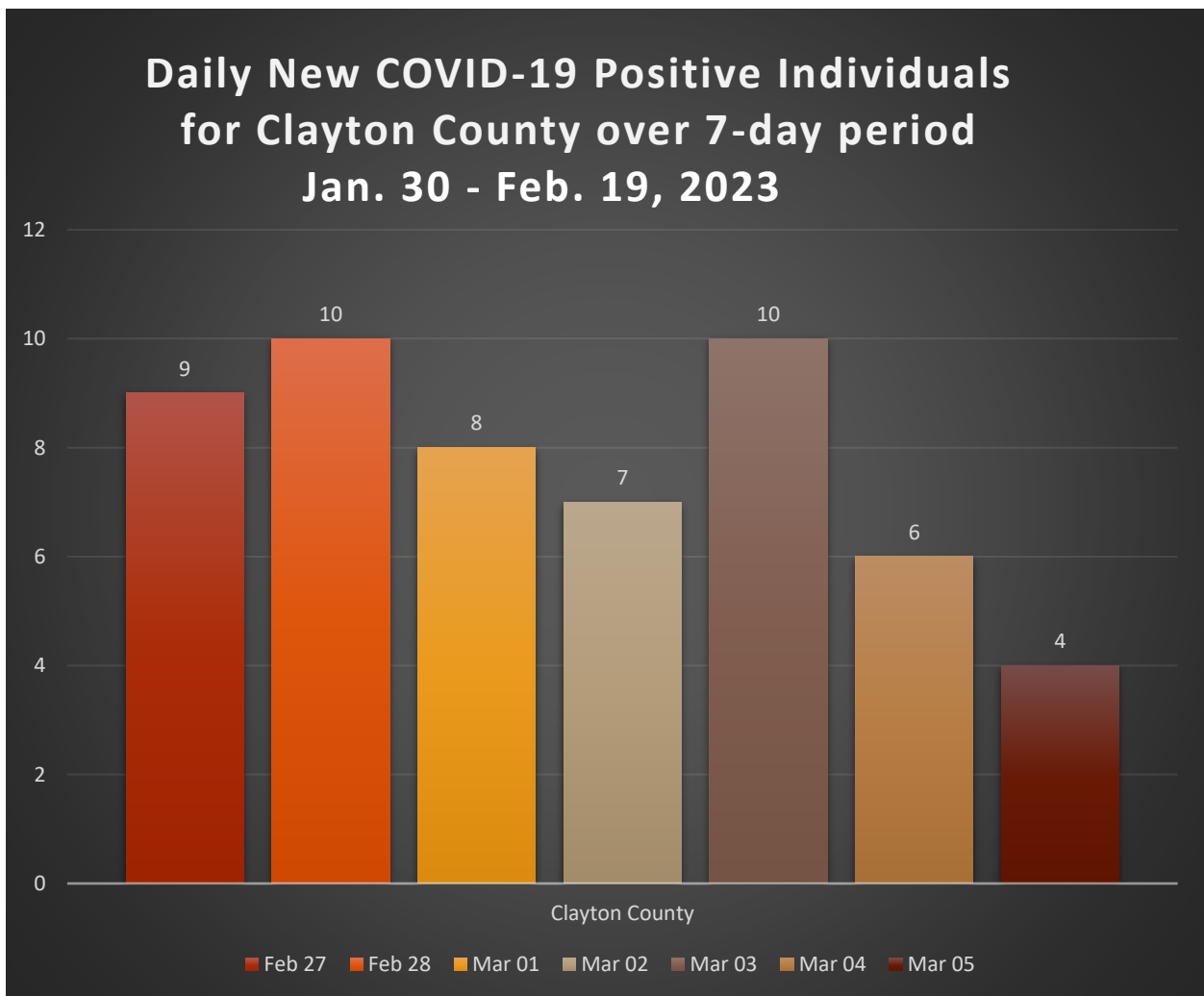


TABLE 2. CUMULATIVE COVID-19 CASE COUNTS BY CITY AND %TOTAL OF CLAYTON COUNTY CASES

City	Feb 27	Feb 28	Mar 01	Mar 02	Mar 03	Mar 04	Mar 05	% Total*
Jonesboro	21254	21258	21261	21265	21269	21270	21273	30.1%
Riverdale	14807	14808	14810	14811	14812	14812	14813	21.2%
Hampton	4824	4825	4825	4825	4827	4827	4827	6.9%
Forest Park	5966	5967	5967	5967	5968	5969	5969	8.5%
Morrow	5842	5842	5843	5845	5845	5845	5845	8.4%
Ellenwood	4304	4305	4305	4305	4305	4305	4305	6.2%
Rex	4516	4517	4518	4518	4519	4519	4519	6.5%
Atlanta	2922	2923	2924	2924	2925	2927	2927	4.2%
Lake City	313	313	313	313	313	313	313	0.4%
Stockbridge	1037	1037	1037	1037	1037	1039	1039	1.5%
College Park	1609	1609	1609	1609	1609	1609	1609	2.3%
Conley	1163	1163	1163	1163	1163	1163	1163	1.7%
Fayetteville	735	735	735	735	735	735	735	1.1%
Lovejoy	241	241	241	241	241	241	241	0.3%
Unknown	477	477	485	488	484	482	387	0.6%
Total	70010	70020	70036	70046	70052	70056	69965	100%

TABLE 3. DAILY NUMBER OF NEW COVID-19 CASES BY CITY

City	Feb 27	Feb 28	Mar 01	Mar 02	Mar 03	Mar 04	Mar 05	Total
Jonesboro	4	4	3	4	4	1	3	23
Riverdale	1	1	2	1	1	0	1	7
Hampton	0	1	0	0	2	0	0	3
Forest Park	1	1	0	0	1	1	0	4
Morrow	1	0	1	2	0	0	0	4
Ellenwood	0	1	0	0	0	0	0	1
Rex	0	1	1	0	1	0	0	3
Atlanta	1	1	1	0	1	2	0	6
Lake City	0	0	0	0	0	0	0	0
Stockbridge	0	0	0	0	0	2	0	2
College Park	0	0	0	0	0	0	0	0
Conley	1	0	0	0	0	0	0	1
Fayetteville	0	0	0	0	0	0	0	0
Lovejoy	0	0	0	0	0	0	0	0
Unknown	0	0	0	0	0	0	0	0
Total	9	10	8	7	10	6	4	54

*The percent total defines the percent of cases in Clayton County that comes from each city.

TABLE 4. COVID-19 CASES HOSPITALIZATION AND DEATH COUNTS IN CLAYTON COUNTY

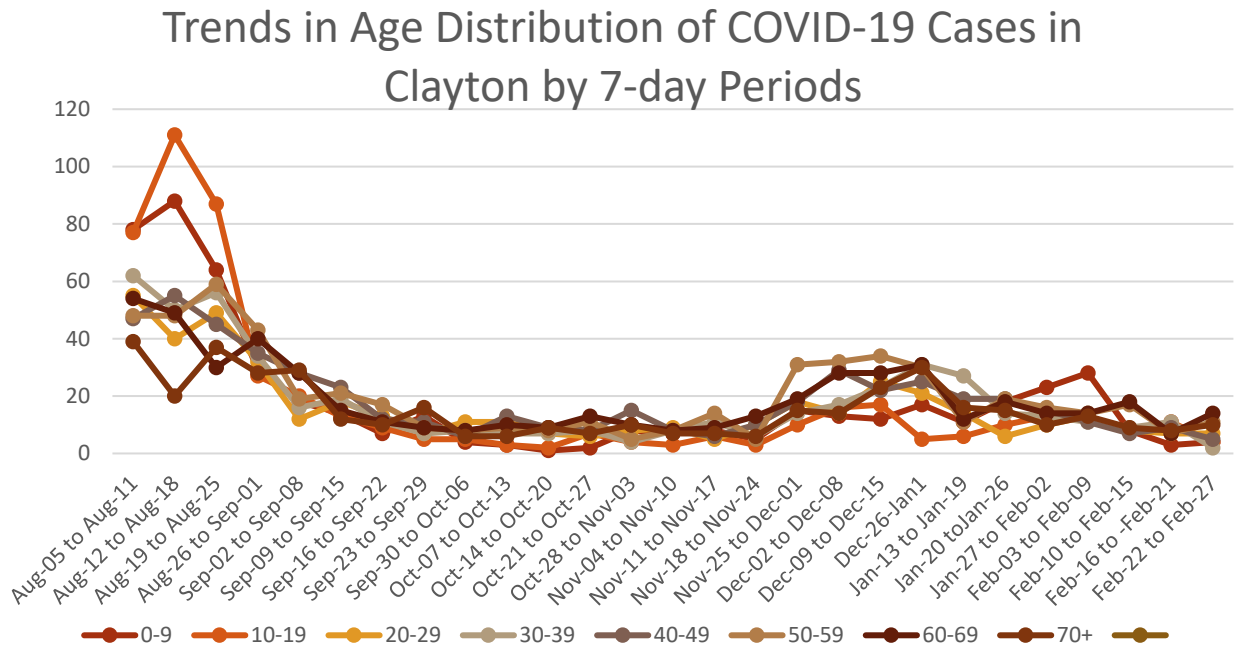
	Previous 14 Days 1/30-2/12	Recent 14 Days 2/13-2/26	% Change
Needed Hospitalization	17	12	-29.4%

	Total Count	% of Cases That Died
Died	998	1.4%

TABLE 5. DEMOGRAPHIC DATA OF COVID-19 CASES IN CLAYTON COUNTY

Demographic	Count	%
Gender		
Female	40742	58.2%
Male	29028	41.4%
Unknown	286	0.4%
Age Group		
0-9	6030	8.6%
10-19	8733	12.5%
20-29	11932	17.0%
30-39	12752	18.2%
40-49	10854	15.5%
50-59	9703	13.9%
60-69	6271	8.96%
70+	3752	5.36%
Race		
Asian	1804	2.5%
Black	44482	62.1%
Other	5140	7.2%
White	7248	10.1%
Unknown	12916	18.0%
Ethnicity		
Hispanic/Latino	8718	12.4%
Non-Hispanic/Latino	48326	69.0%
Unknown/Not Specified	13012	18.6%

FIGURE 2. DISTRIBUTION OF POSITIVE CASES BY AGE OVER 7-DAY PERIODS



Graphs shown reflect the number of confirmed cases by age using the date of first positive sample collection. All data reported are preliminary and subject to change.

FIGURE 3. PROPORTION OF COVID-19 CASES BY RACE IN CLAYTON COUNTY

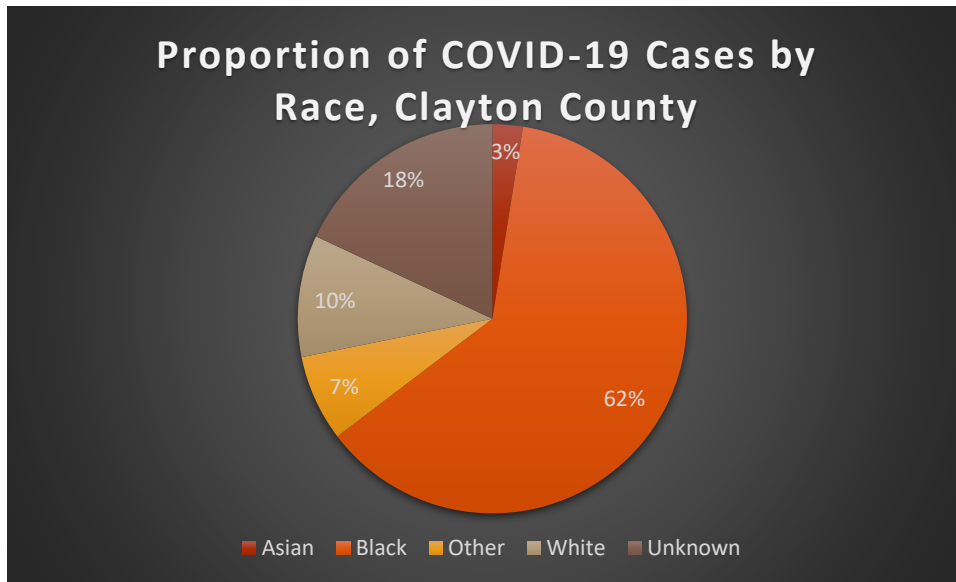


FIGURE 4. COVID-19 CASES BY RACE AND ETHNICITY IN CLAYTON COUNTY

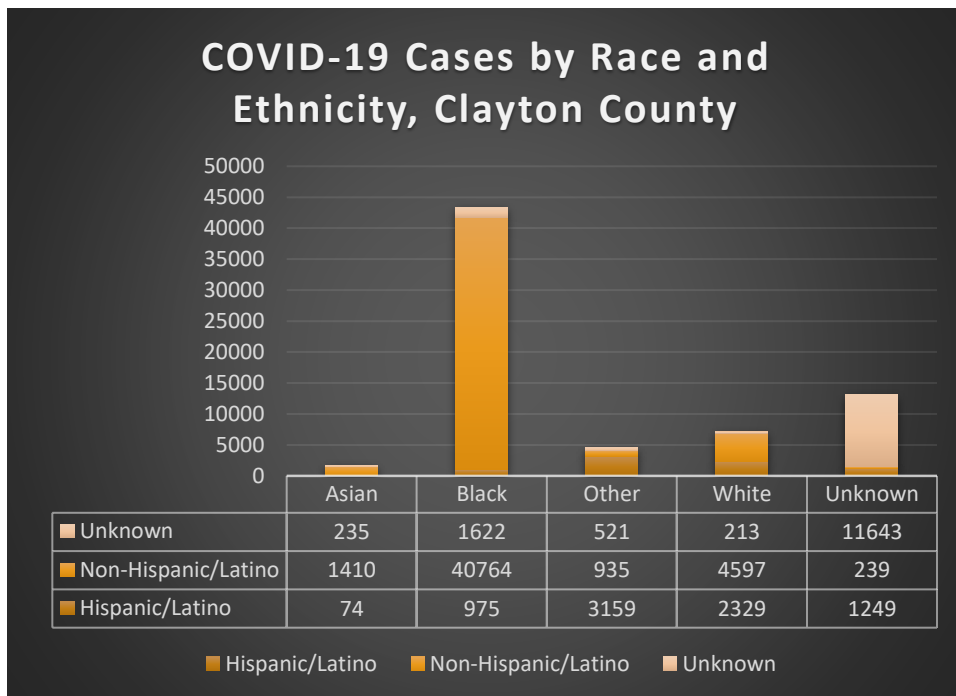


FIGURE 5. COVID-19 RELATED DEATHS BY AGE GROUP CLAYTON COUNTY

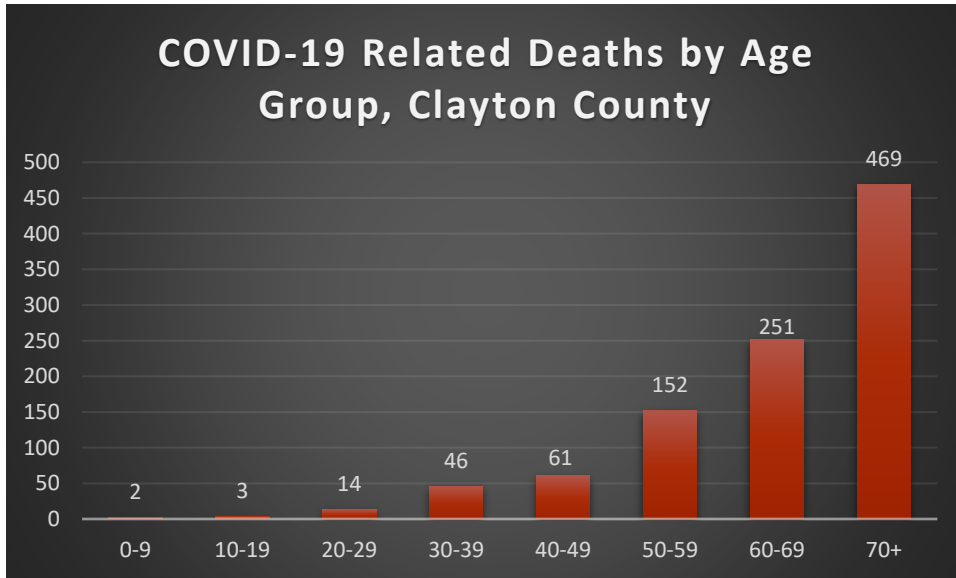


FIGURE 6. COVID-19 RELATED DEATHS BY RACE AND ETHNICITY IN CLAYTON COUNTY

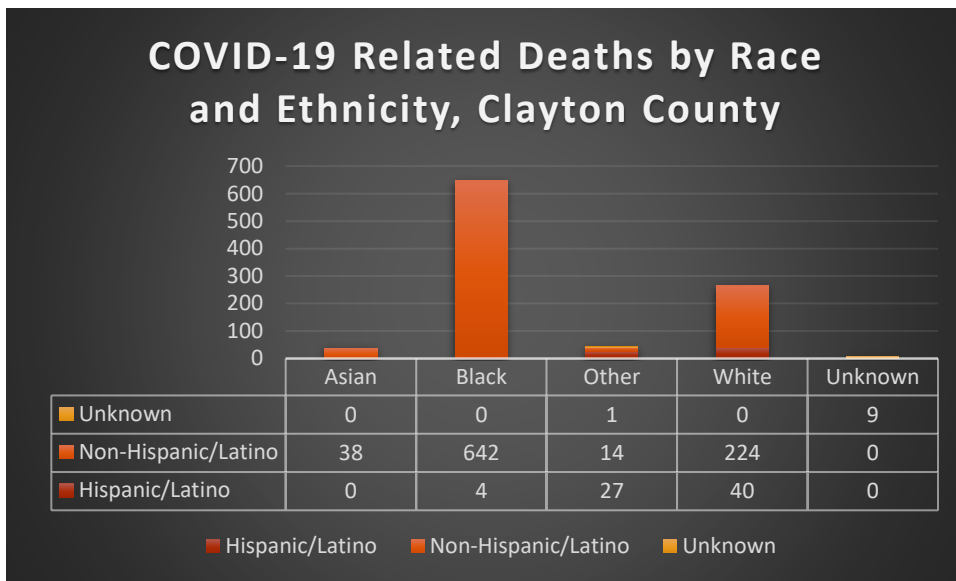




TABLE 6. COVID-19 CASE COUNTS BY ZIP CODE AND CHANGE IN TWO MOST RECENT 14-DAY PERIODS

Zip Code	Previous 2/26	Current 03/05	Percent of Total	Previous 14 Days 02/06/-2/19	Recent 14 Days 2/20-03/05	Percent Change in 14-Day Periods
All Clayton	70000	70056	100.0%	384	406	6%
30236	10561	10599	15.1%	67	41	-39%
30238	9397	9442	13.5%	59	41	-31%
30274	8292	8329	11.9%	41	27	-34%
30260	5764	5794	8.3%	23	34	48%
30297	5693	5705	8.1%	25	13	-48%
30296	5572	5605	8.0%	33	34	3%
30273	4218	4235	6.0%	19	25	32%
30294	4079	4104	5.9%	26	17	-35%
30349	4243	4266	6.1%	19	16	-16%
30228	4583	4612	6.6%	41	20	-51%
30288	1083	1084	1.5%	9	3	-67%
30281	987	991	1.4%	8	1	-88%
30215	714	715	1.0%	12	2	-83%
30250	213	215	0.3%	0	1	NA
30237	113	113	0.2%	0	1	NA
30326	35	35	0.0%	0	0	NA
30287	2	22	0.0%	1	0	-100%
30328	16	16	0.0%	0	0	NA
30298	37	37	0.1%	0	0	NA

Note: Data cleaning may lead to reassignment of cases from one territory to another based on corrected addresses which may appear as “decreases” when compared to previous counts. Zip codes with fewer than 5 cases reported were omitted from the table.

FIGURE 7: CLAYTON COUNTY VACCINE NUMBERS AS OF 2/27-03/05/2023

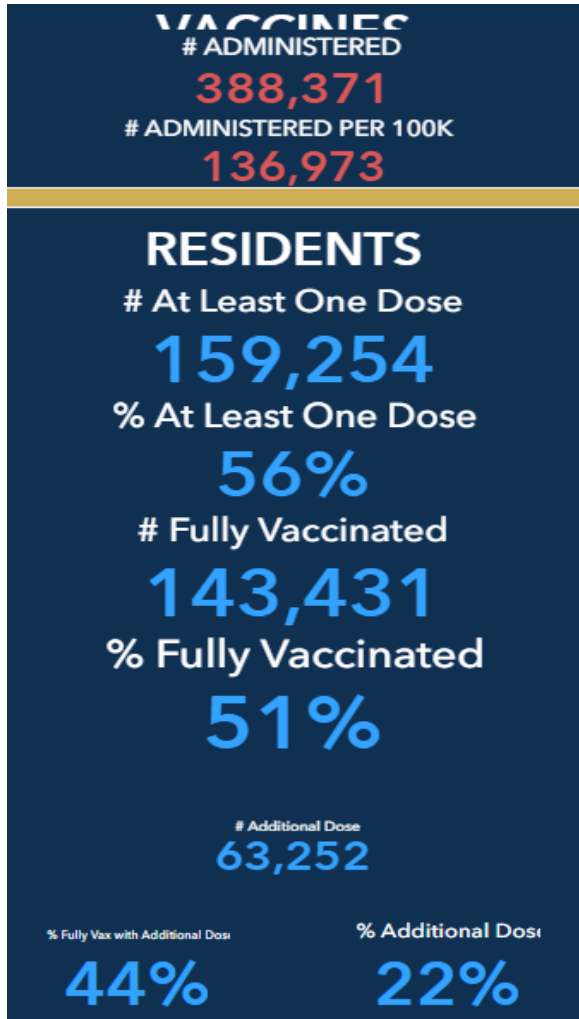


FIGURE 8. PROPORTION OF VACCINE RECIPIENTS WITH AT LEAST ONE DOSE BY SEX IN CLAYTON COUNTY

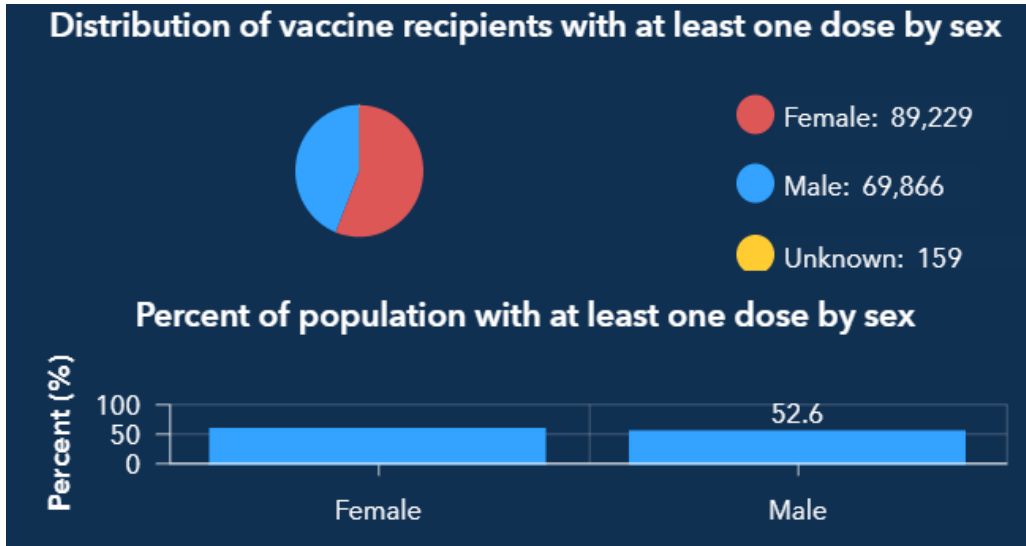


FIGURE 9. PROPORTION OF VACCINE RECIPIENTS WITH AT LEAST ONE DOSE BY AGE IN CLAYTON COUNTY

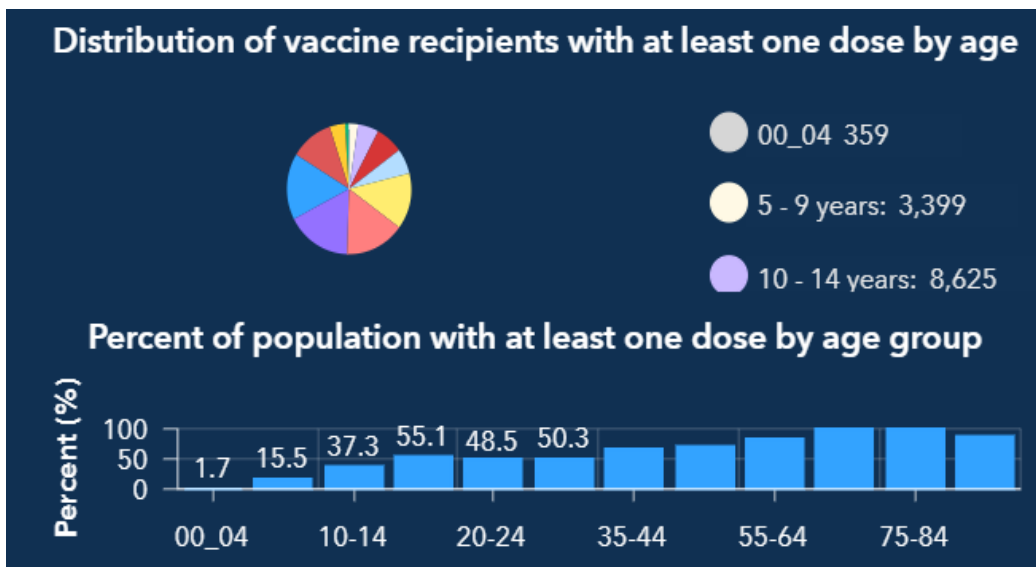


FIGURE 10. PROPORTION OF VACCINE RECIPIENTS WITH AT LEAST ONE DOSE BY ETHNICITY IN CLAYTON COUNTY

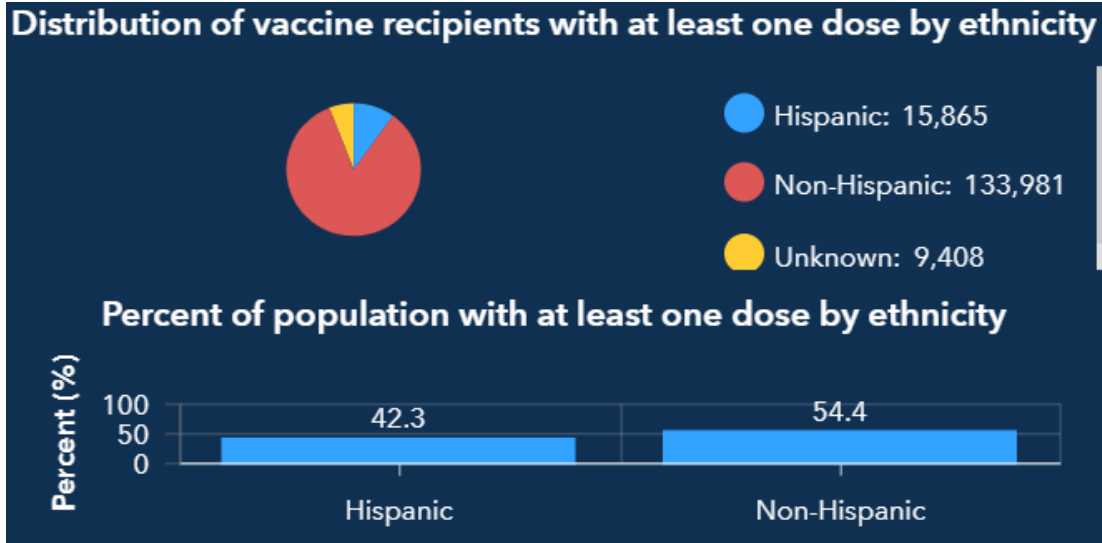


FIGURE 11. PROPORTION OF VACCINE RECIPIENTS WITH AT LEAST ONE DOSE BY RACE IN CLAYTON COUNTY

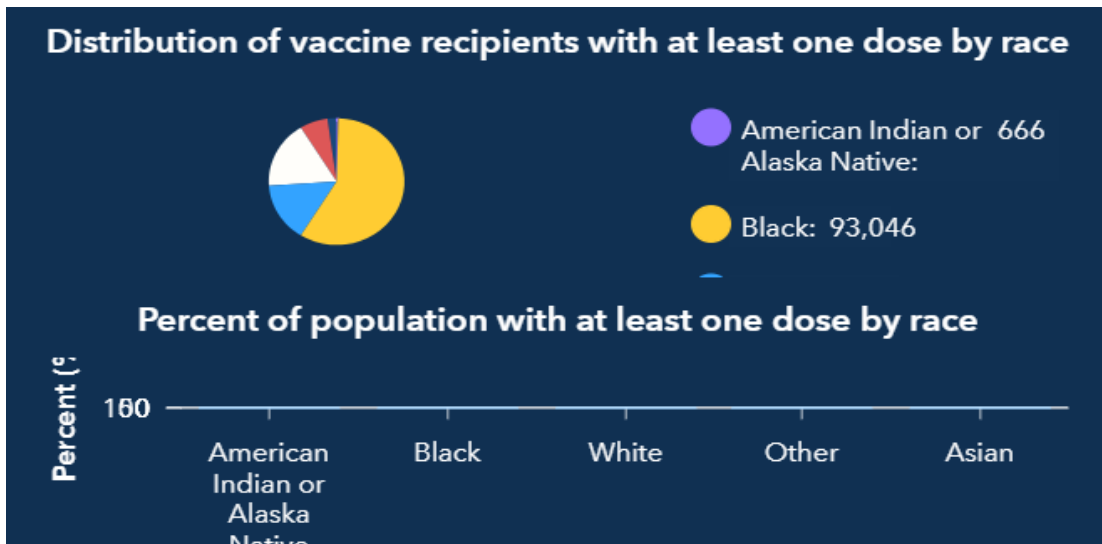
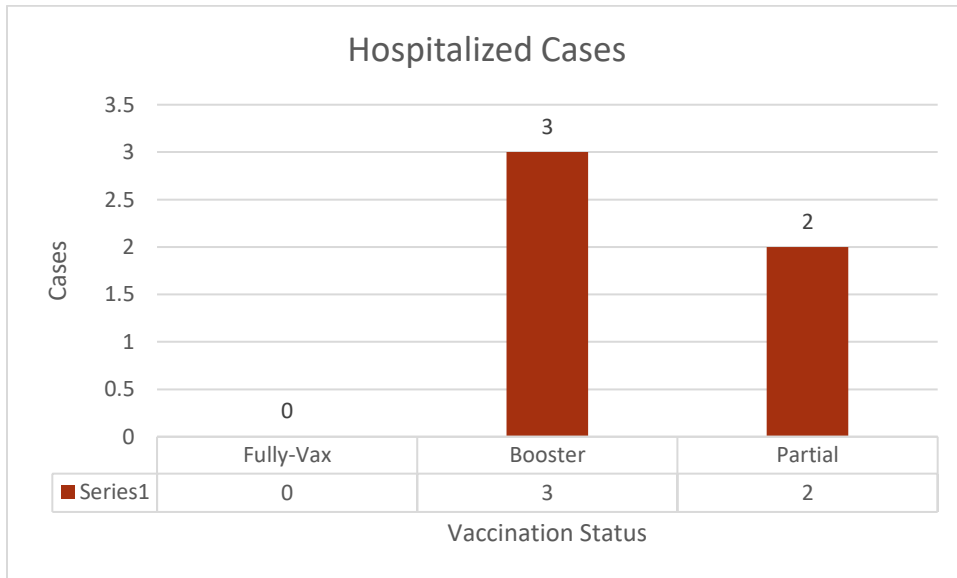
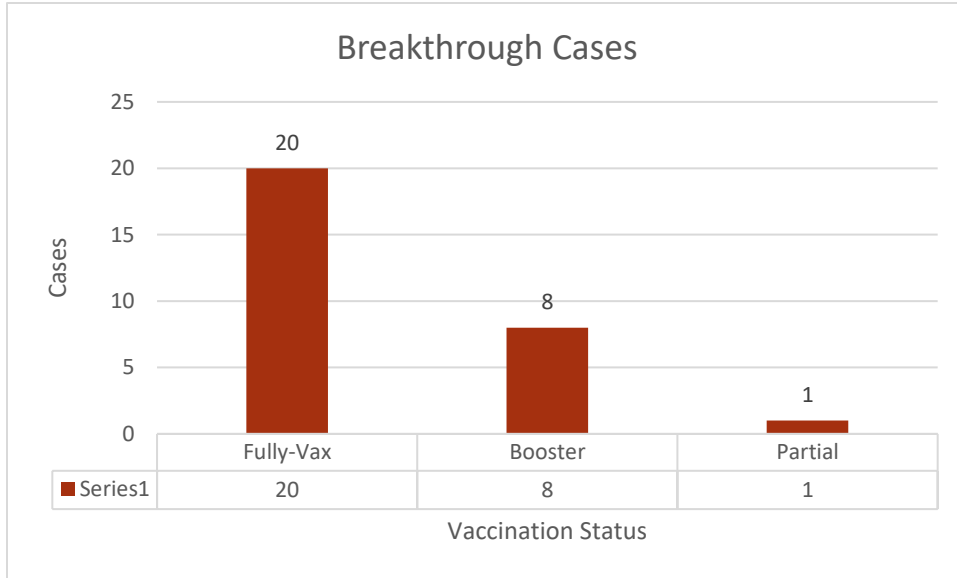


FIGURE 12. CLAYTON COUNTY BREAKTHROUGH CASES





GEORGIA DEPARTMENT OF PUBLIC HEALTH

Clayton County Health District