

COVID-19 SUMMARY REPORT FOR CLAYTON COUNTY

Clayton County, Georgia From 4/03– 4/09/2023

Created: April 10, 2023
Source: Clayton County Health District and
Georgia Department of Public Health, State
Electronic Notifiable Disease Surveillance System

- As of April 09, 2023, Clayton County has 70,271 cases of 2019 Novel Coronavirus (COVID-19) and 1012 total confirmed deaths.
- There were 21 new positive COVID-19 tests reported in Clayton County from 04/03-04/09.
- Clayton County accounts for approximately 3.0% of the total cases in Georgia.
- 28.6% of the positive cases in Clayton County have been hospitalized from 04/03-04/09.
- 0 % of positive cases in Clayton County have died from 04/03-04/09.
- The average percent of Positive PCR tests in Clayton County over the last 7 days is 8.1%.
- The total number of confirmed cases (PCR) per 100,000 people in Clayton County is 23,132.
- The total number of cases (PCR and Antigen) per 100,000 people in Clayton County is 25,650.
- In Clayton County 159,400 residents (56%) have received at least one dose of a COVID-19 vaccine and 143,579 (51%) have been fully vaccinated.
- As April 09, 2023, Clayton County has 63,560 (44%) fully vaccinated individuals that have received an additional dose of vaccine.

TABLE 1. CUMULATIVE COVID-19 CASES AND PERCENT CHANGE FOR CLAYTON COUNTY

	Apr 03	Apr 04	Apr 05	Apr 06	Apr 07	Apr 08	Apr 09
Clayton County	70255	70255	70257	70260	70267	70269	70271
% Change	0.01%	0.01%	0.00%	0.00%	0.01%	0.00%	0.00%

FIGURE 1. DAILY NEW COVID-19 POSITIVE INDIVIDUALS FOR CLAYTON COUNTY OVER 7-DAY PERIOD

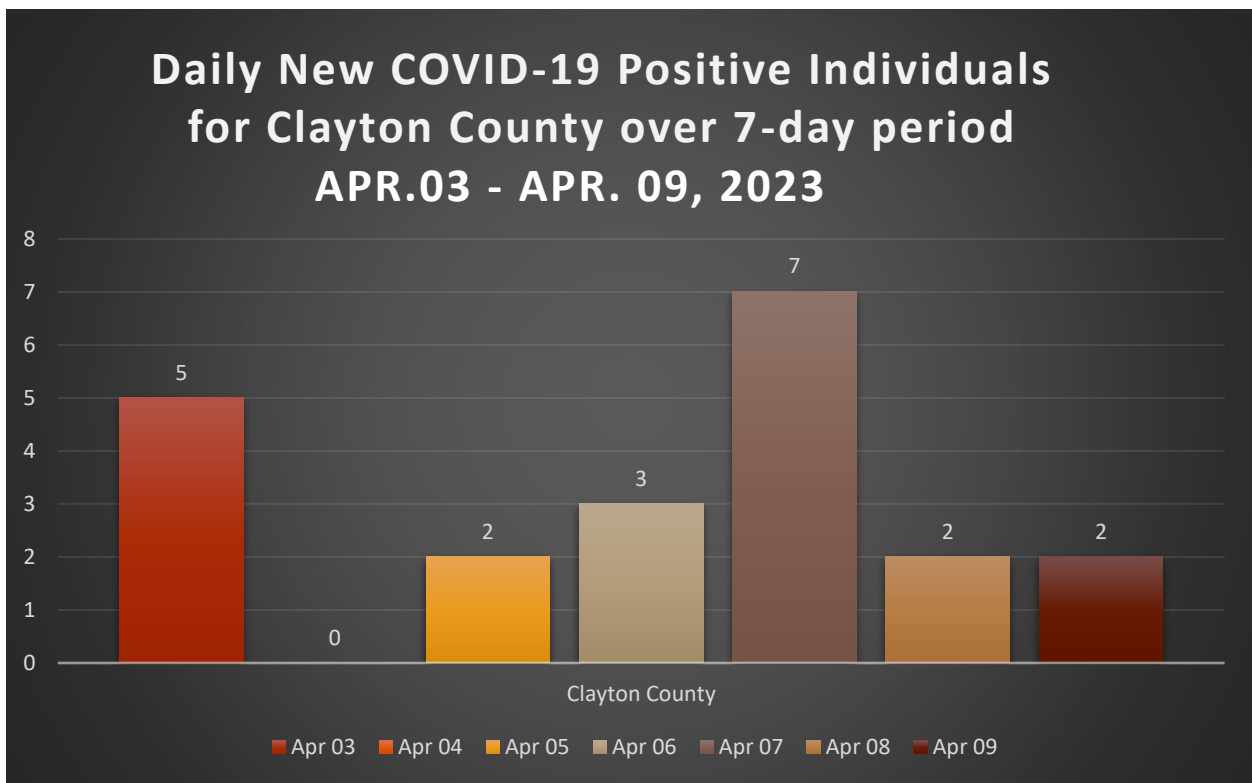


TABLE 2. CUMULATIVE COVID-19 CASE COUNTS BY CITY AND %TOTAL OF CLAYTON COUNTY CASES

City	Apr 03	Apr 04	Apr 05	Apr 06	Apr 07	Apr 08	Apr 09	% Total*
Jonesboro	21357	21357	21358	21358	21361	21361	21361	30.1%
Riverdale	14878	14878	14878	14879	14881	14882	14883	21.2%
Hampton	4849	4849	4850	4850	4850	4850	4851	6.9%
Forest Park	5990	5990	5990	5991	5992	5992	5992	8.5%
Morrow	5866	5866	5866	5867	5867	5867	5867	8.3%
Ellenwood	4317	4317	4317	4317	4318	4318	4318	6.1%
Rex	4536	4536	4536	4536	4536	4536	4536	6.5%
Atlanta	2930	2930	2930	2930	2930	2931	2931	4.2%
Lake City	313	313	313	313	313	313	313	0.4%
Stockbridge	1042	1042	1042	1042	1042	1042	1042	1.5%
College Park	1627	1627	1627	1627	1627	1627	1627	2.3%
Conley	1175	1175	1175	1175	1175	1175	1175	1.7%
Fayetteville	745	745	745	745	745	745	745	1.1%
Lovejoy	243	243	243	243	243	243	243	0.3%
Unknown	0	0	0	0	0	0	0	0.0%
Total	70255	70255	70257	70260	70267	70269	70271	100%

TABLE 3. DAILY NUMBER OF NEW COVID-19 CASES BY CITY

City	Apr 03	Apr 04	Apr 05	Apr 06	Apr 07	Apr 08	Apr 09	Total
Jonesboro	0	0	1	0	3	0	0	4
Riverdale	1	0	0	1	2	1	1	6
Hampton	1	0	1	0	0	0	1	3
Forest Park	0	0	0	1	1	0	0	2
Morrow	0	0	0	1	0	0	0	1
Ellenwood	0	0	0	0	1	0	0	1
Rex	2	0	0	0	0	0	0	2
Atlanta	0	0	0	0	0	1	0	0
Lake City	0	0	0	0	0	0	0	0
Stockbridge	0	0	0	0	0	0	0	0
College Park	0	0	0	0	0	0	0	0
Conley	1	0	0	0	0	0	0	1
Fayetteville	0	0	0	0	0	0	0	0
Lovejoy	0	0	0	0	0	0	0	1
Unknown	0	0	0	0	0	0	0	0
Total	5	0	2	3	7	2	2	21

*The percent total defines the percent of cases in Clayton County that comes from each city.

TABLE 4. COVID-19 CASES HOSPITALIZATION AND DEATH COUNTS IN CLAYTON COUNTY

	Previous 14 Days 3/13-03/26	Recent 14 Days 3/27-4/09	% Change
Needed Hospitalization	7	9	28.6%

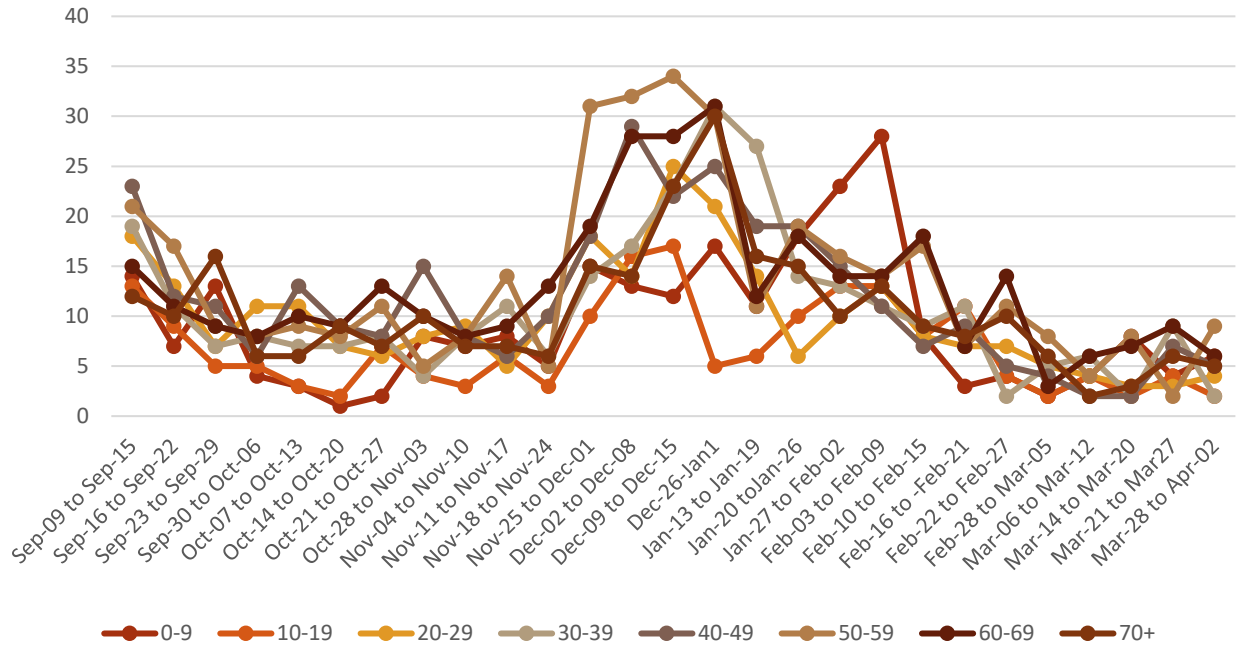
	Total Count	% of Cases That Died
Died	1012	1.4%

TABLE 5. DEMOGRAPHIC DATA OF COVID-19 CASES IN CLAYTON COUNTY

Demographic	Count	%
Gender		
Female	40902	58.2%
Male	29136	41.4%
Unknown	286	0.4%
Age Group		
0-9	6063	8.6%
10-19	8758	12.5%
20-29	11969	17.0%
30-39	12785	18.2%
40-49	10884	15.5%
50-59	9741	13.9%
60-69	6311	8.98%
70+	3781	5.38%
Race		
Asian	1813	2.5%
Black	45169	62.4%
Other	5166	7.1%
White	7352	10.2%
Unknown	12916	17.8%
Ethnicity		
Hispanic/Latino	8754	12.5%
Non-Hispanic/Latino	49113	69.9%
Unknown/Not Specified	12404	17.7%

FIGURE 2. DISTRIBUTION OF POSITIVE CASES BY AGE OVER 7-DAY PERIODS

Trends in Age Distribution of COVID-19 Cases in Clayton by 7-day Periods



Graphs shown reflect the number of confirmed cases by age using the date of first positive sample collection. All data reported are preliminary and subject to change.

FIGURE 3. PROPORTION OF COVID-19 CASES BY RACE IN CLAYTON COUNTY

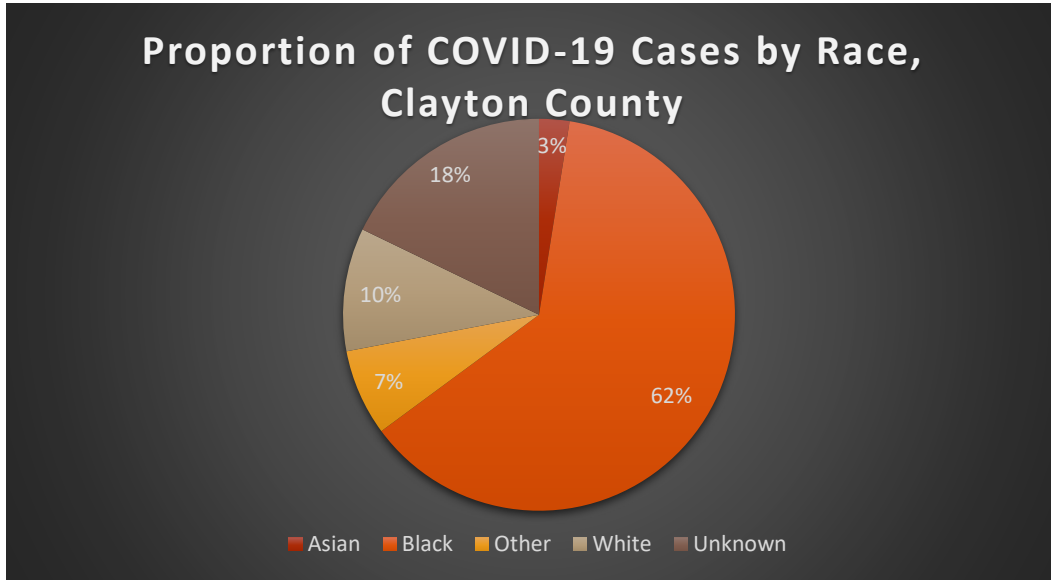


FIGURE 4. COVID-19 CASES BY RACE AND ETHNICITY IN CLAYTON COUNTY

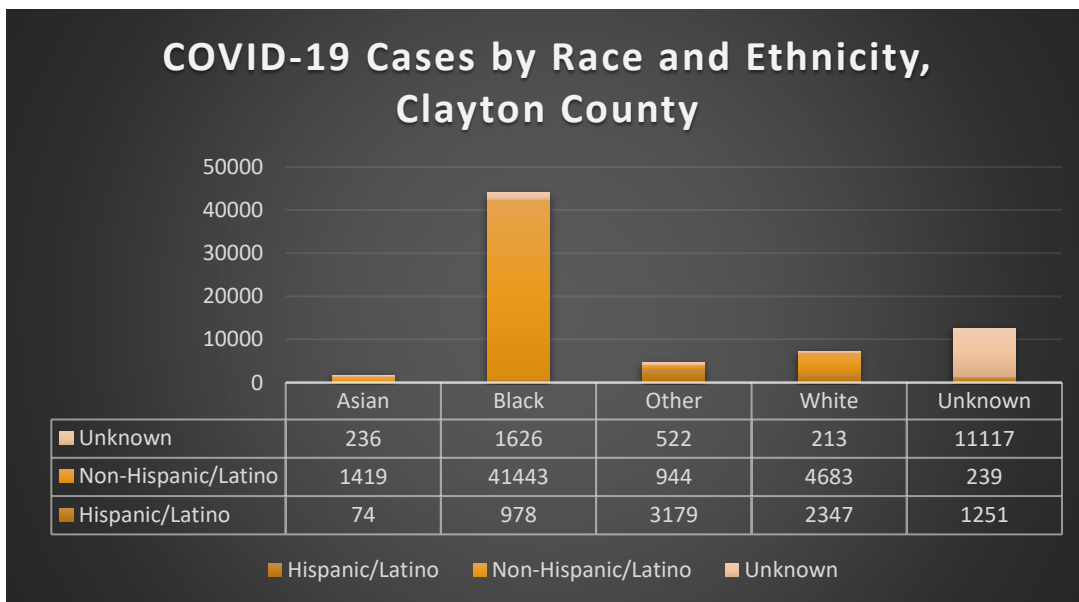


FIGURE 5. COVID-19 RELATED DEATHS BY AGE GROUP CLAYTON COUNTY

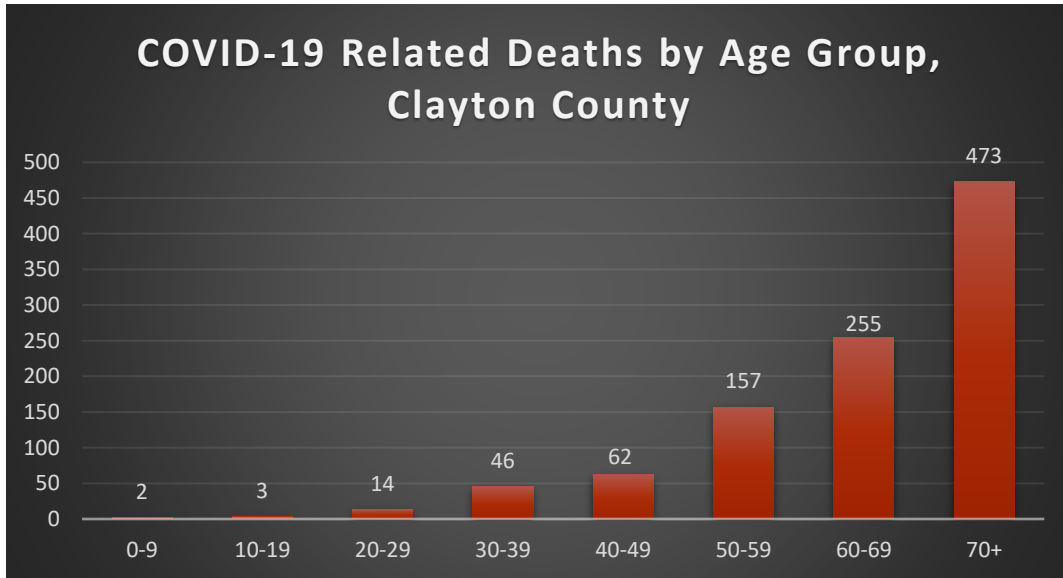


FIGURE 6. COVID-19 RELATED DEATHS BY RACE AND ETHNICITY IN CLAYTON COUNTY

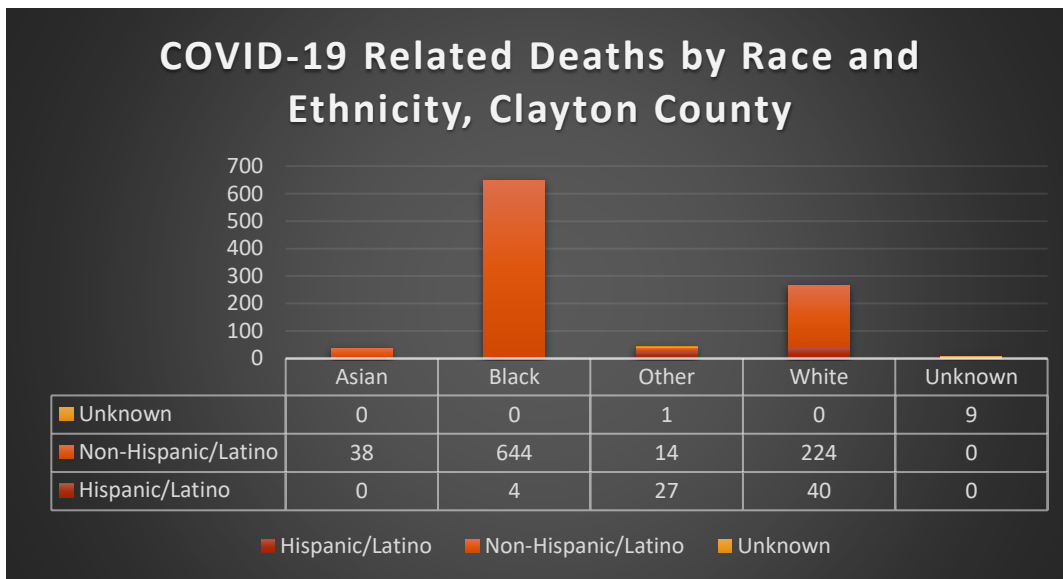




TABLE 6. COVID-19 CASE COUNTS BY ZIP CODE AND CHANGE IN TWO MOST RECENT 14-DAY PERIODS

Zip Code	Previous 4/02	Current 04/09	Percent of Total	Previous 14 Days 03/13/-3/26	Recent 14 Days 3/27-04/09	Percent Change in 14-Day Periods
All Clayton	70250	70271	100.0%	384	406	6%
30236	10561	10599	15.1%	67	41	-39%
30238	9397	9442	13.4%	59	41	-31%
30274	8292	8329	11.9%	41	27	-34%
30260	5764	5794	8.2%	23	34	48%
30297	5693	5705	8.1%	25	13	-48%
30296	5572	5605	8.0%	33	34	3%
30273	4218	4235	6.0%	19	25	32%
30294	4079	4104	5.8%	26	17	-35%
30349	4243	4266	6.1%	19	16	-16%
30228	4583	4612	6.6%	41	20	-51%
30288	1083	1084	1.5%	9	3	-67%
30281	987	991	1.4%	8	1	-88%
30215	714	715	1.0%	12	2	-83%
30250	213	215	0.3%	0	1	NA
30237	113	113	0.2%	0	1	NA
30326	35	35	0.0%	0	0	NA
30287	2	22	0.0%	1	0	-100%
30328	16	16	0.0%	0	0	NA
30298	37	37	0.1%	0	0	NA

Note: Data cleaning may lead to reassignment of cases from one territory to another based on corrected addresses which may appear as “decreases” when compared to previous counts. Zip codes with fewer than 5 cases reported were omitted from the table.

FIGURE 7: CLAYTON COUNTY VACCINE NUMBERS AS OF 4/03-04/09/2023

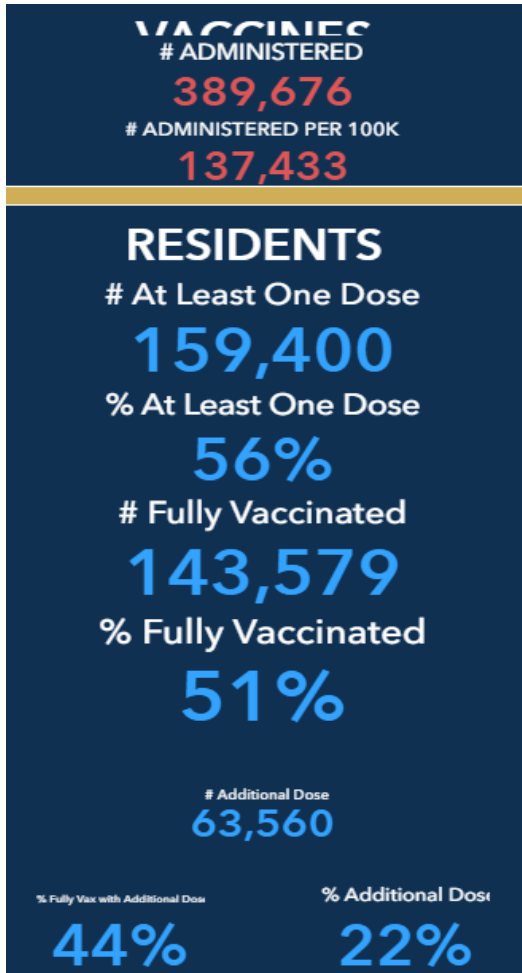


FIGURE 8. PROPORTION OF VACCINE RECIPIENTS WITH AT LEAST ONE DOSE BY SEX IN CLAYTON COUNTY

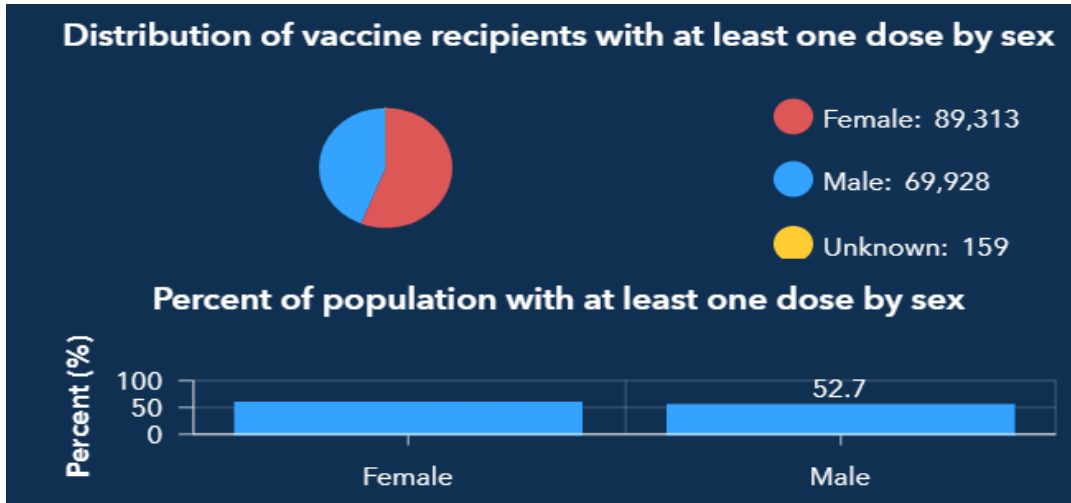


FIGURE 9. PROPORTION OF VACCINE RECIPIENTS WITH AT LEAST ONE DOSE BY AGE IN CLAYTON COUNTY

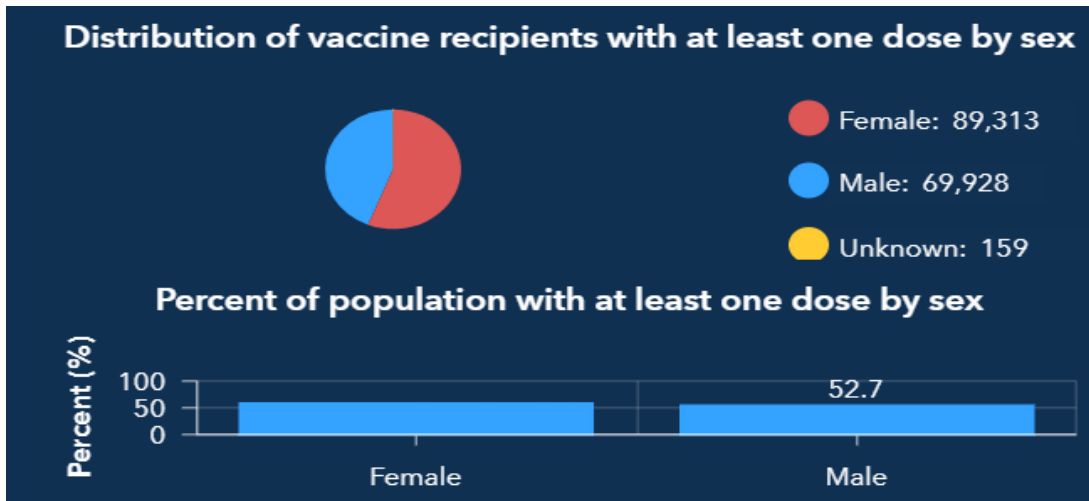


FIGURE 10. PROPORTION OF VACCINE RECIPIENTS WITH AT LEAST ONE DOSE BY ETHNICITY IN CLAYTON COUNTY

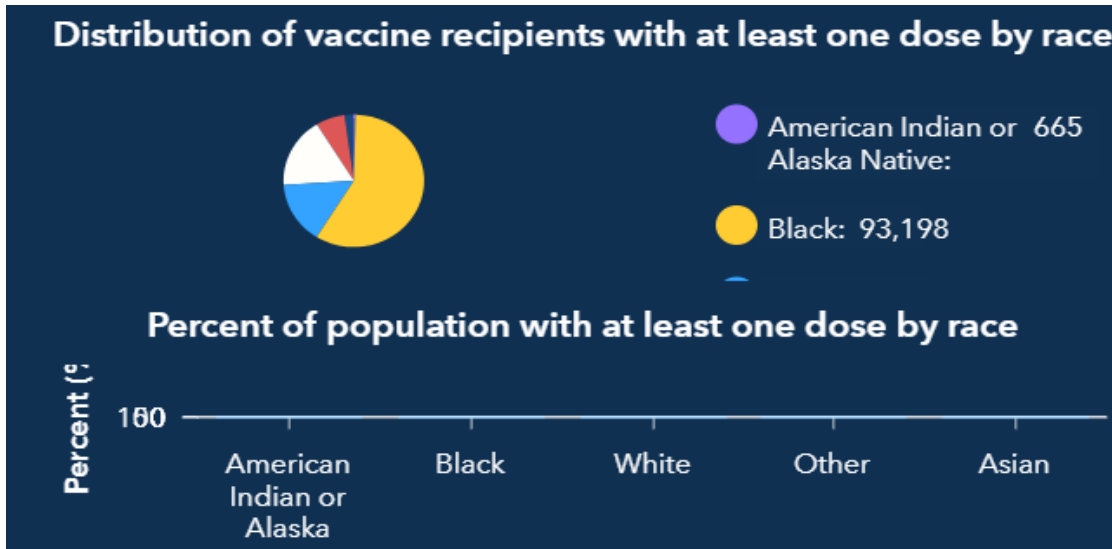


FIGURE 11. PROPORTION OF VACCINE RECIPIENTS WITH AT LEAST ONE DOSE BY RACE IN CLAYTON COUNTY

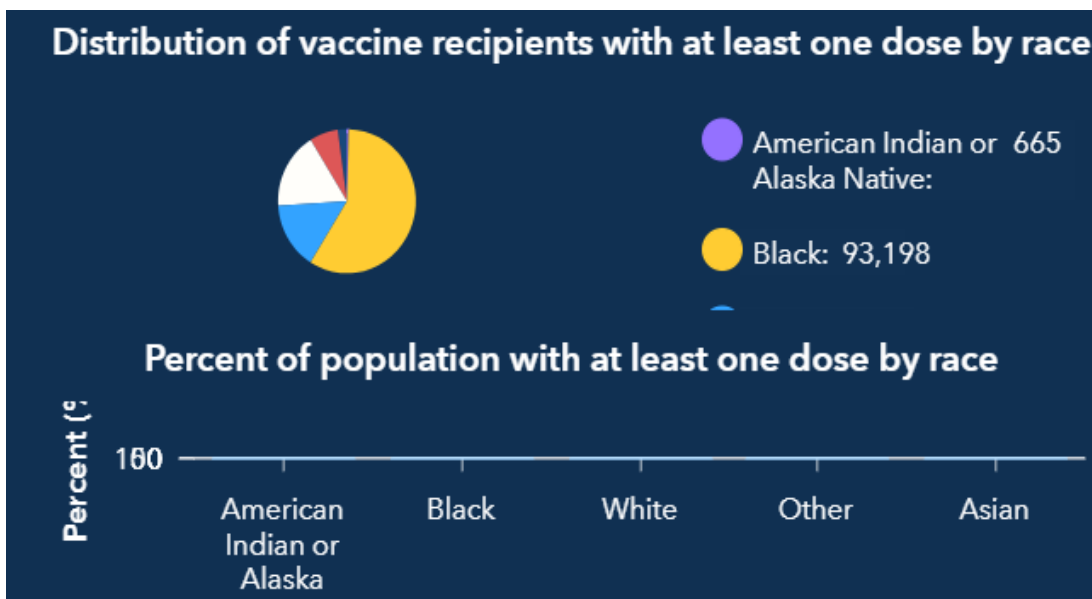
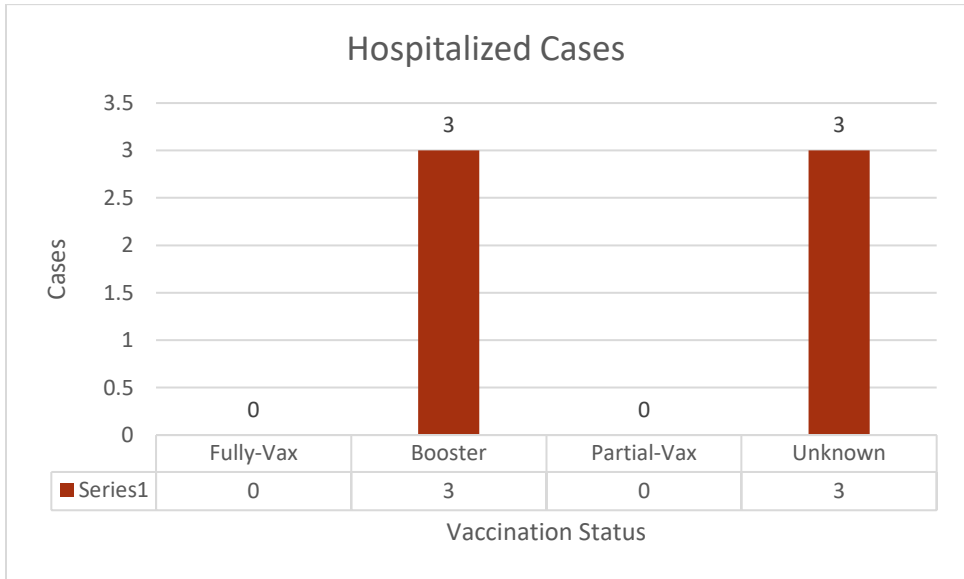
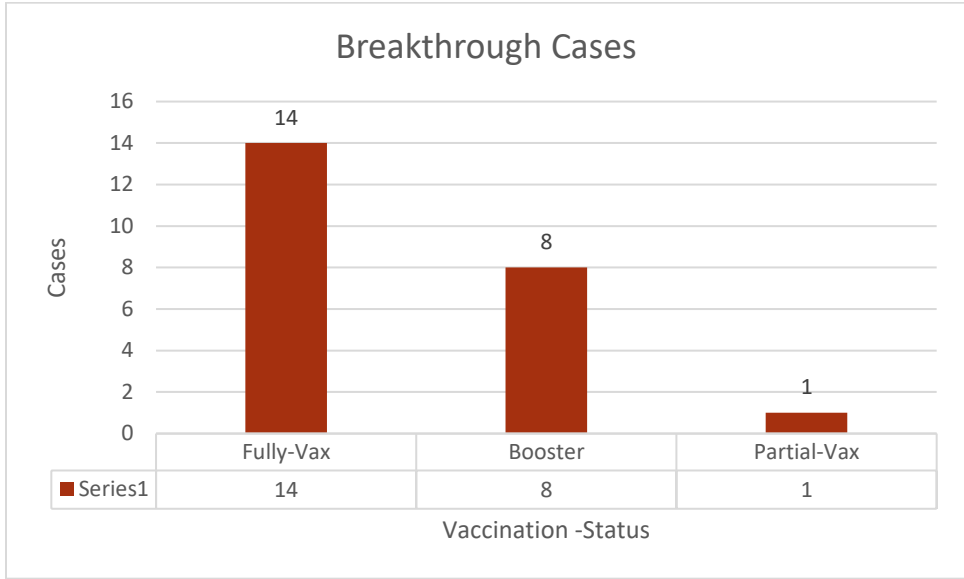


FIGURE 12. CLAYTON COUNTY BREAKTHROUGH CASES





GEORGIA DEPARTMENT OF PUBLIC HEALTH

Clayton County Health District