

COVID-19 SUMMARY REPORT FOR CLAYTON COUNTY

Clayton County, Georgia From 4/17– 4/23/2023

Created: April 24, 2023
Source: Clayton County Health District and
Georgia Department of Public Health, State
Electronic Notifiable Disease Surveillance System

- As of April 23, 2023, Clayton County has 70,336 cases of 2019 Novel Coronavirus (COVID-19)
- There were 33 new positive COVID-19 tests reported in Clayton County from 04/17-04/23.
- Clayton County accounts for approximately 3.0% of the total cases in Georgia.
- 9.1% of the positive cases in Clayton County have been hospitalized from 04/17-04/23.
- 0% of positive cases in Clayton County have died from 04/17-04/23, no deaths.
- The average percent of Positive PCR tests in Clayton County over the last 7 days is 6.7%.
- The total number of confirmed cases (PCR) per 100,000 people in Clayton County is 23,157.
- The total number of cases (PCR and Antigen) per 100,000 people in Clayton County is 25,684.
- In Clayton County 159,406, residents (56%) have received at least one dose of a COVID-19 vaccine and 143,592 (51%) have been fully vaccinated.
- As April 23, 2023, Clayton County has 63,639 (44%) fully vaccinated individuals that have received an additional dose of vaccine.

TABLE 1. CUMULATIVE COVID-19 CASES AND PERCENT CHANGE FOR CLAYTON COUNTY

	Apr 17	Apr 18	Apr 19	Apr 20	Apr 21	Apr 22	Apr 23
Clayton County	70306	70308	70320	70327	70329	70333	70336
% Change	0.00%	0.01%	0.02%	0.01%	0.00%	0.01%	0.00%

FIGURE 1. DAILY NEW COVID-19 POSITIVE INDIVIDUALS FOR CLAYTON COUNTY OVER 7-DAY PERIOD

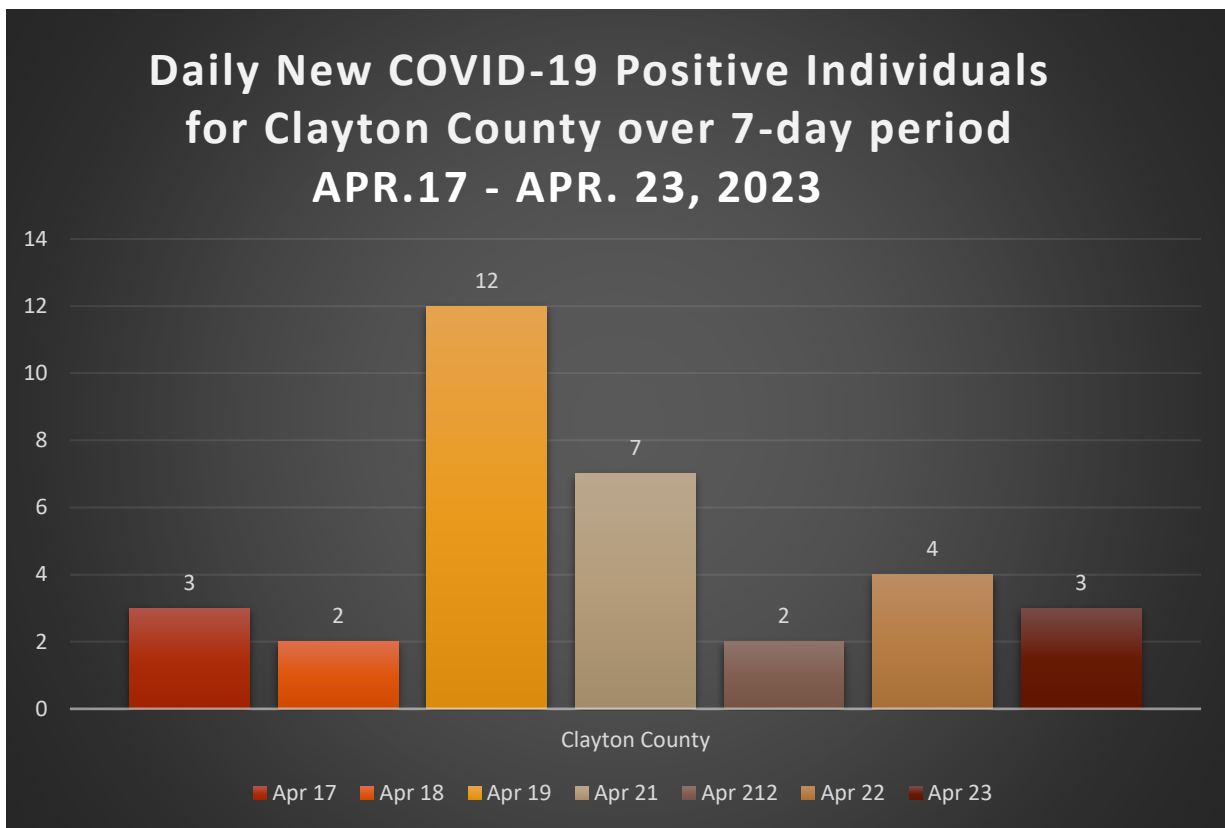


TABLE 2. CUMULATIVE COVID-19 CASE COUNTS BY CITY AND %TOTAL OF CLAYTON COUNTY CASES

City	Apr 17	Apr 18	Apr 19	Apr 20	Apr 21	Apr 22	Apr 23	% Total*
Jonesboro	21356	21356	21361	21363	21364	21366	21366	30.1%
Riverdale	14878	14878	14883	14884	14884	14884	14884	21.2%
Hampton	4851	4851	4851	4852	4852	4853	4854	6.9%
Forest Park	5990	5990	5990	5991	5991	5991	5992	8.5%
Morrow	5866	5867	5869	5869	5870	5870	5870	8.3%
Ellenwood	4317	4318	4318	4319	4319	4320	4320	6.1%
Rex	4526	4526	4526	4526	4526	4527	4527	6.4%
Atlanta	2930	2930	2930	2930	2931	2931	2931	4.2%
Lake City	313	313	313	313	313	313	313	0.4%
Stockbridge	1042	1042	1042	1042	1042	1042	1043	1.5%
College Park	1629	1629	1629	1629	1629	1629	1629	2.3%
Conley	1175	1176	1176	1176	1176	1176	1176	1.7%
Fayetteville	747	747	747	747	747	747	747	1.1%
Lovejoy	243	243	243	243	243	243	243	0.3%
Unknown	0	0	0	0	0	0	0	0.0%
Total	70306	70308	70320	70327	70329	70333	70336	100%

TABLE 3. DAILY NUMBER OF NEW COVID-19 CASES BY CITY

City	Apr 17	Apr 18	Apr 19	Apr 20	Apr 21	Apr 22	Apr 23	Total
Jonesboro	0	0	5	2	1	2	0	10
Riverdale	1	0	5	1	0	0	0	7
Hampton	1	0	0	1	0	1	1	4
Forest Park	0	0	0	1	0	0	1	2
Morrow	1	1	2	0	1	0	0	5
Ellenwood	0	1	0	1	0	1	0	3
Rex	0	0	0	0	0	1	0	1
Atlanta	0	0	0	0	1	0	0	0
Lake City	0	0	0	0	0	0	0	0
Stockbridge	0	0	0	0	0	0	1	1
College Park	0	0	0	0	0	0	0	0
Conley	0	1	0	0	0	0	0	1
Fayetteville	0	0	0	0	0	0	0	0
Lovejoy	0	0	0	0	0	0	0	1
Unknown	0	0	0	0	0	0	0	0
Total	3	2	12	6	2	4	3	33

*The percent total defines the percent of cases in Clayton County that comes from each city.

TABLE 4. COVID-19 CASES HOSPITALIZATION AND DEATH COUNTS IN CLAYTON COUNTY

	Previous 14 Days 3/27-4/09	Recent 14 Days 4/10- 4/23	% Change
Needed Hospitalization	8	9	12.5%

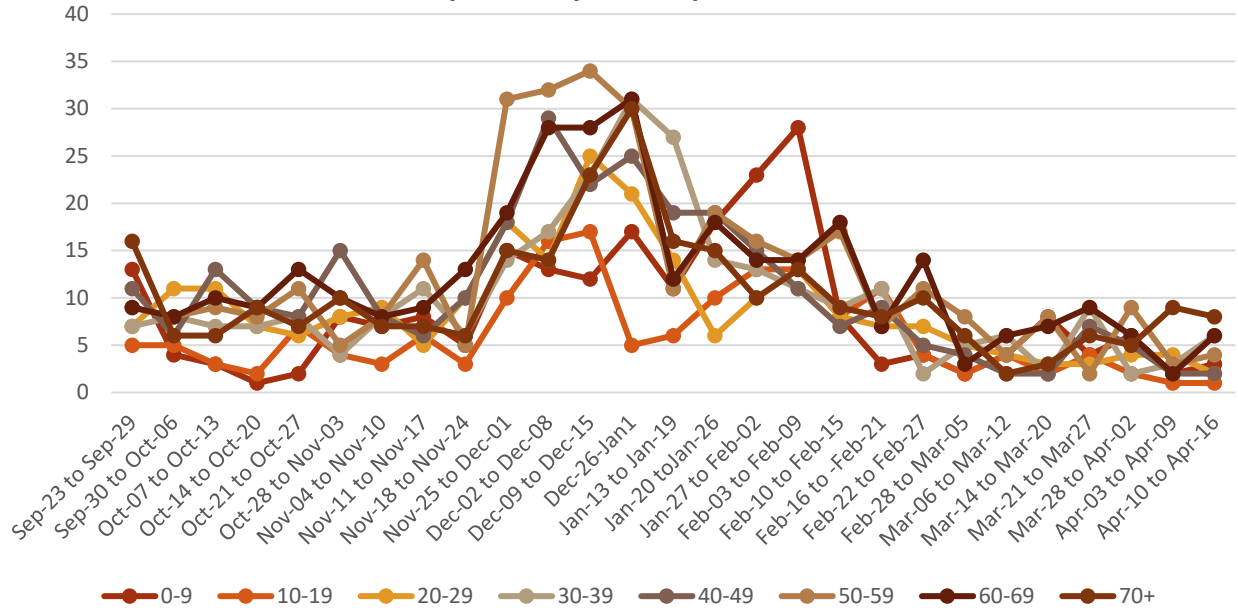
	Total Count	% of Cases That Died
Died	1013	1.4%

TABLE 5. DEMOGRAPHIC DATA OF COVID-19 CASES IN CLAYTON COUNTY

Demographic		Count	%
Gender			
	Female	40959	58.2%
	Male	29184	41.4%
	Unknown	286	0.4%
Age Group			
	0-9	6067	8.6%
	10-19	8758	12.5%
	20-29	11969	17.0%
	30-39	12796	18.2%
	40-49	10876	15.5%
	50-59	9746	13.9%
	60-69	6319	8.99%
	70+	3793	5.39%
Race			
	Asian	1824	2.5%
	Black	45343	62.4%
	Other	5176	7.1%
	White	7395	10.2%
	Unknown	12916	17.8%
Ethnicity			
	Hispanic/Latino	8784	12.5%
	Non-Hispanic/Latino	49294	70.1%
	Unknown/Not Specified	12258	17.4%

FIGURE 2. DISTRIBUTION OF POSITIVE CASES BY AGE OVER 7-DAY PERIODS

Trends in Age Distribution of COVID-19 Cases in Clayton by 7-day Periods



Graphs shown reflect the number of confirmed cases by age using the date of first positive sample collection. All data reported are preliminary and subject to change.

FIGURE 3. PROPORTION OF COVID-19 CASES BY RACE IN CLAYTON COUNTY

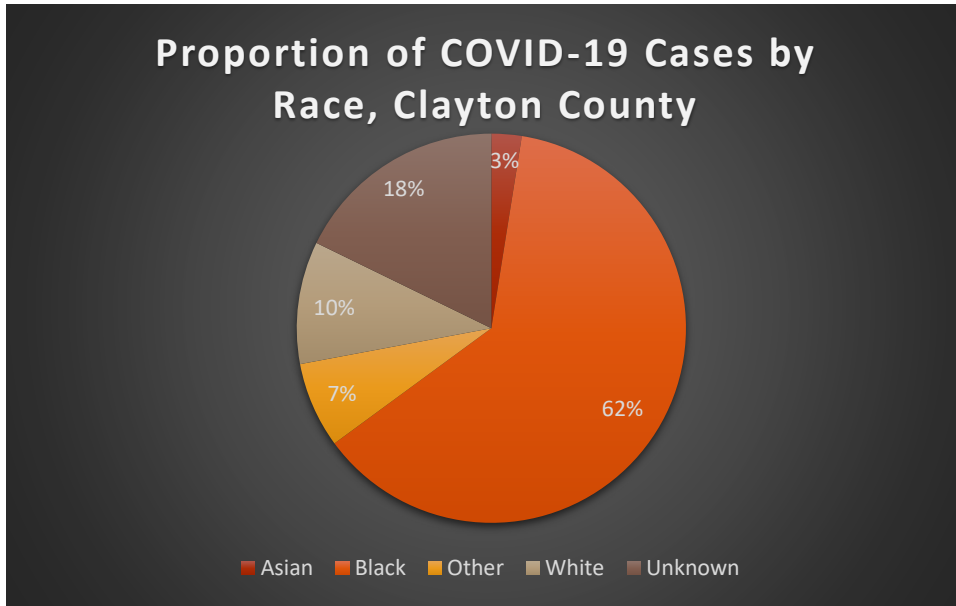
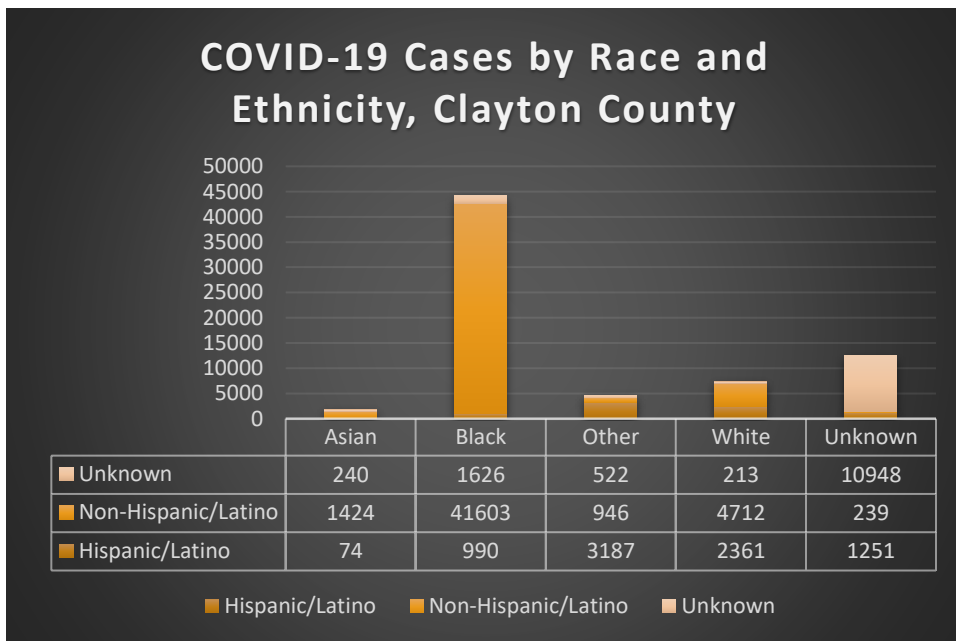
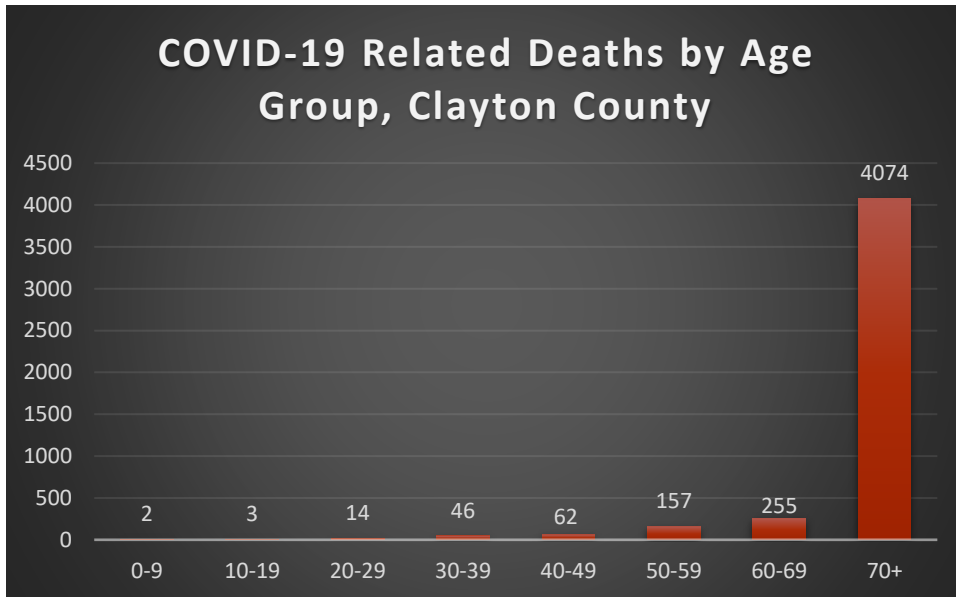


FIGURE 4. COVID-19 CASES BY RACE AND ETHNICITY IN CLAYTON COUNTY



**FIGURE 5. COVID-19 RELATED DEATHS BY AGE GROUP
CLAYTON COUNTY**



**FIGURE 6. COVID-19 RELATED DEATHS BY RACE AND
ETHNICITY IN CLAYTON COUNTY**

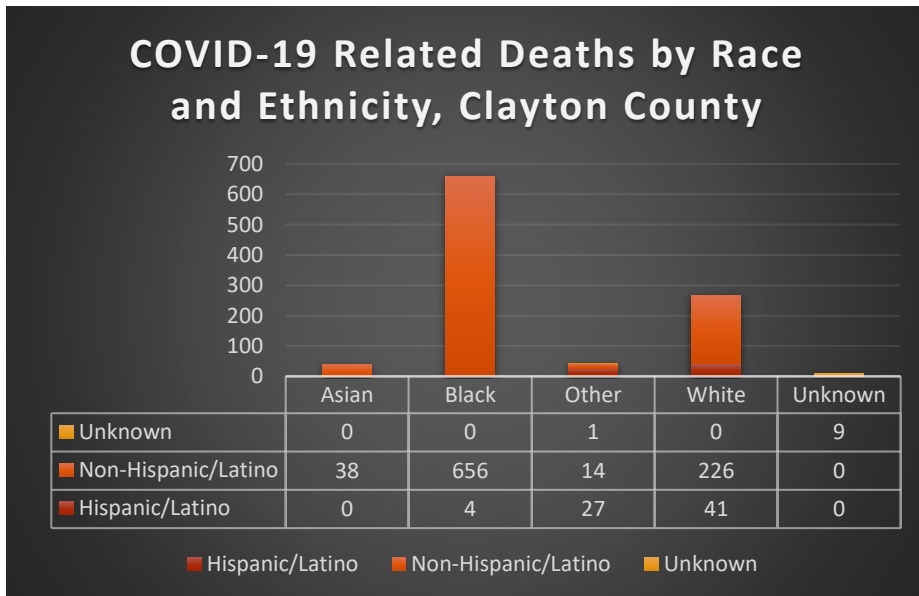




TABLE 6. COVID-19 CASE COUNTS BY ZIP CODE AND CHANGE IN TWO MOST RECENT 14-DAY PERIODS

Zip Code	Previous 4/16	Current 04/23	Percent of Total	Previous 14 Days 03/27/-4/09	Recent 14 Days 4/10-04/23	Percent Change in 14-Day Periods
All						
Clayton	70303	70336	100.0%	384	406	6%
30236	10561	10599	15.1%	67	41	-39%
30238	9397	9442	13.4%	59	41	-31%
30274	8292	8329	11.8%	41	27	-34%
30260	5764	5794	8.2%	23	34	48%
30297	5693	5705	8.1%	25	13	-48%
30296	5572	5605	8.0%	33	34	3%
30273	4218	4235	6.0%	19	25	32%
30294	4079	4104	5.8%	26	17	-35%
30349	4243	4266	6.1%	19	16	-16%
30228	4583	4612	6.6%	41	20	-51%
30288	1083	1084	1.5%	9	3	-67%
30281	987	991	1.4%	8	1	-88%
30215	714	715	1.0%	12	2	-83%
30250	213	215	0.3%	0	1	NA
30237	113	113	0.2%	0	1	NA
30326	35	35	0.0%	0	0	NA
30287	2	22	0.0%	1	0	-100%
30328	16	16	0.0%	0	0	NA
30298	37	37	0.1%	0	0	NA

Note: Data cleaning may lead to reassignment of cases from one territory to another based on corrected addresses which may appear as “decreases” when compared to previous counts. Zip codes with fewer than 5 cases reported were omitted from the table.

FIGURE 7: CLAYTON COUNTY VACCINE NUMBERS AS OF 4/17-04/23/2023

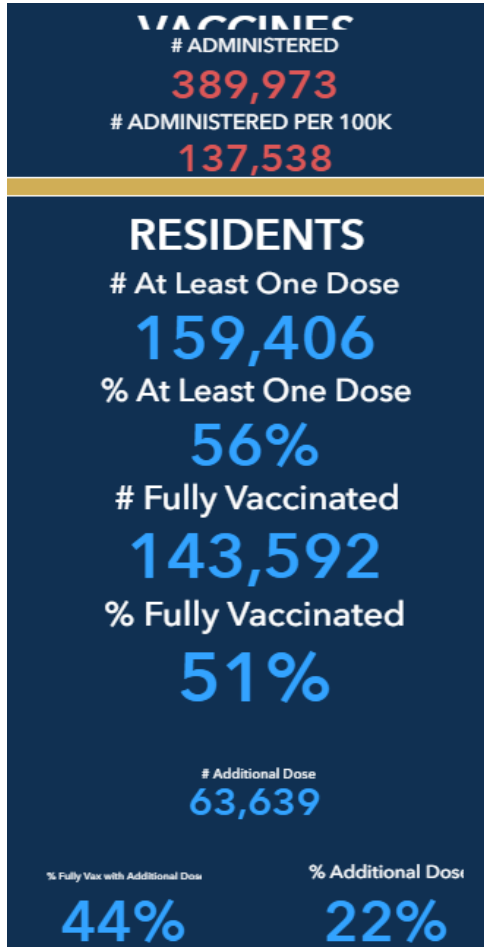


FIGURE 8. PROPORTION OF VACCINE RECIPIENTS WITH AT LEAST ONE DOSE BY SEX IN CLAYTON COUNTY

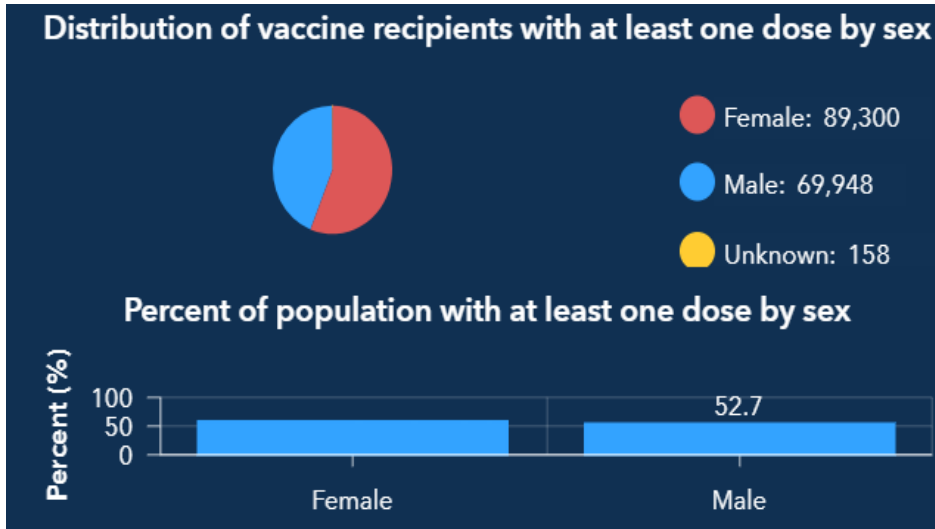


FIGURE 9. PROPORTION OF VACCINE RECIPIENTS WITH AT LEAST ONE DOSE BY AGE IN CLAYTON COUNTY

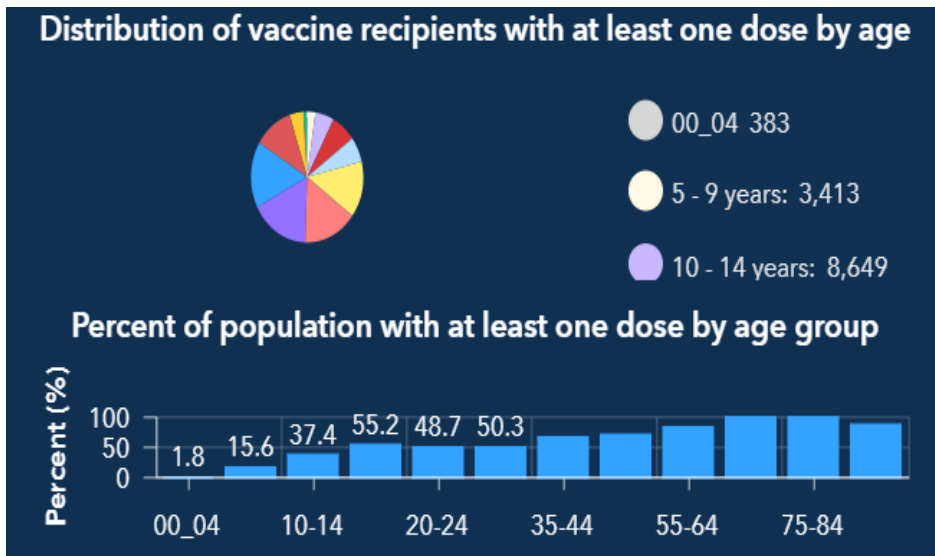


FIGURE 10. PROPORTION OF VACCINE RECIPIENTS WITH AT LEAST ONE DOSE BY ETHNICITY IN CLAYTON COUNTY

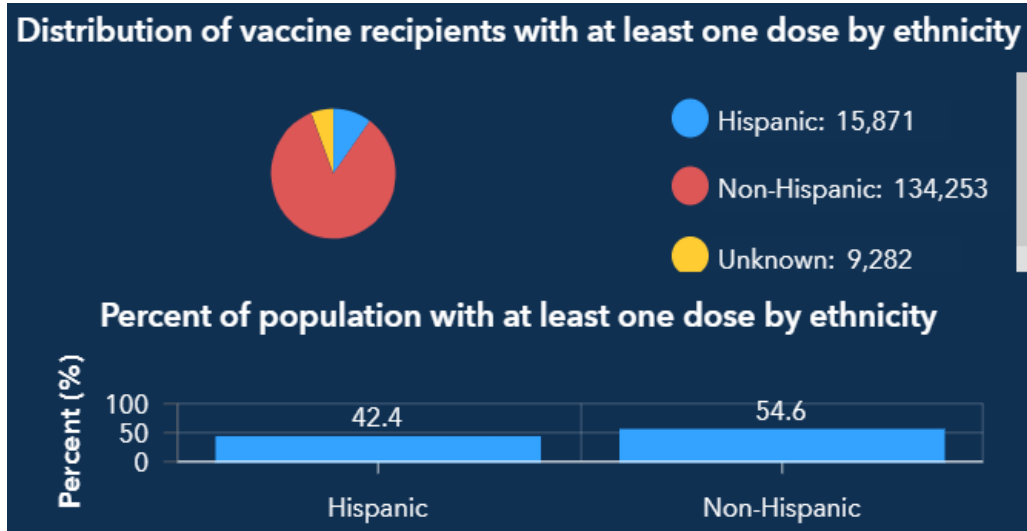


FIGURE 11. PROPORTION OF VACCINE RECIPIENTS WITH AT LEAST ONE DOSE BY RACE IN CLAYTON COUNTY

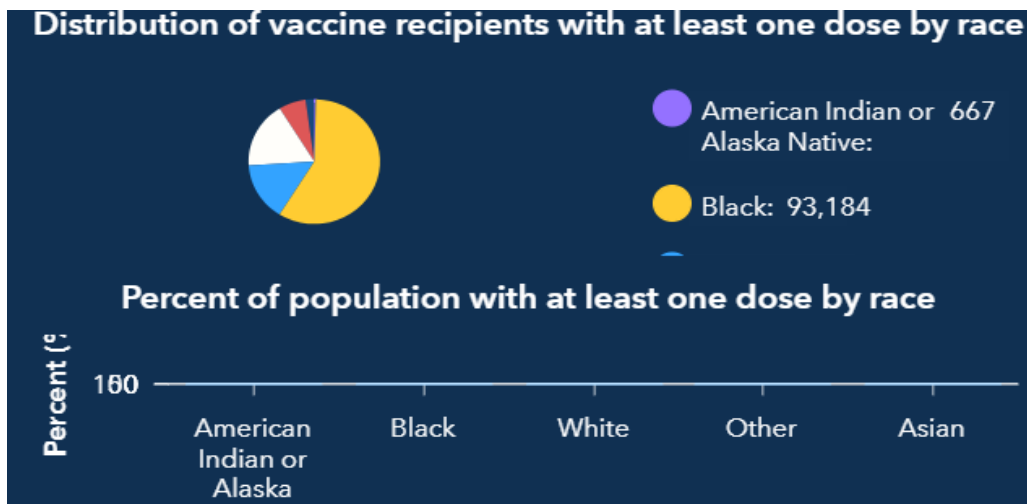
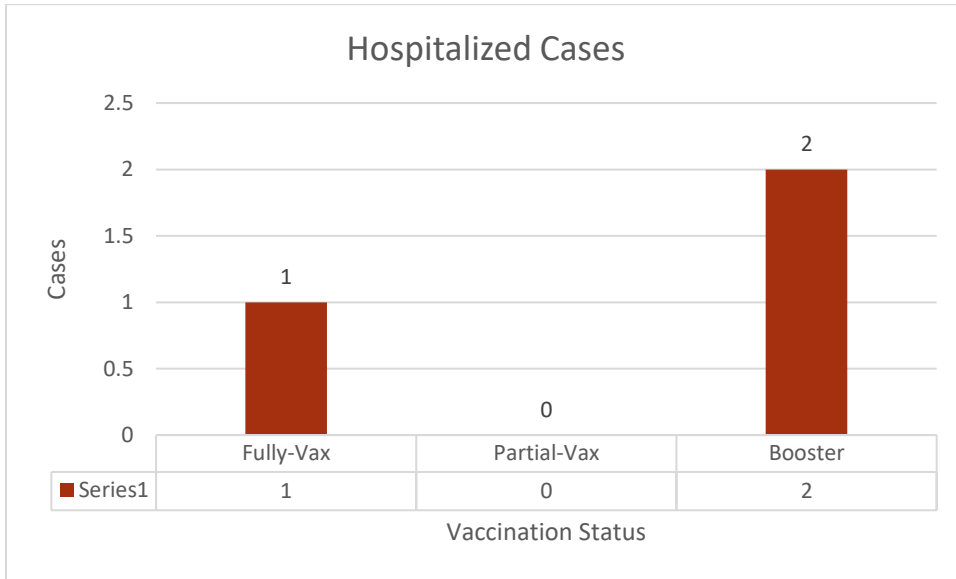
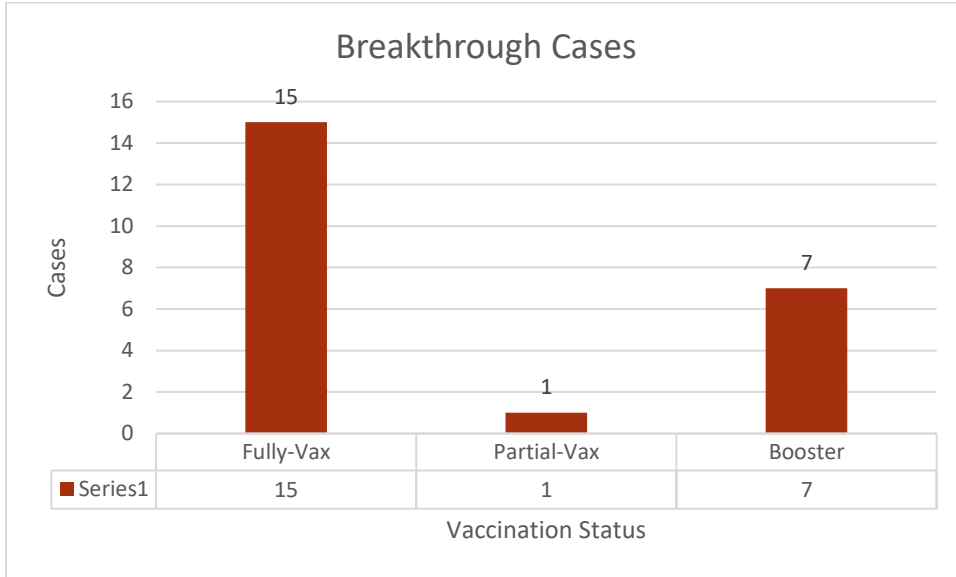


FIGURE 12. CLAYTON COUNTY BREAKTHROUGH CASES





GEORGIA DEPARTMENT OF PUBLIC HEALTH

Clayton County Health District