

COVID-19 SUMMARY REPORT FOR CLAYTON COUNTY

Clayton County, Georgia From 3/06– 3/12/2023

Created: March 12, 2023
Source: Clayton County Health District and
Georgia Department of Public Health, State
Electronic Notifiable Disease Surveillance System

- As of March 12, 2023, Clayton County has 70,102 cases of 2019 Novel Coronavirus (COVID-19).
- There were 34 new positive COVID-19 tests reported in Clayton County from 03/06-03/12.
- Clayton County accounts for approximately 3.0% of the total cases in Georgia.
- 11.8% of the positive cases in Clayton County have been hospitalized from 3/06-03/12.
- 5.9 % of positive cases in Clayton County have died from 03/06-03/12, 2 deaths.
- The average percent of Positive PCR tests in Clayton County over the last 7 days is 8.1%.
- The total number of confirmed cases (PCR) per 100,000 people in Clayton County is 23,057.
- The total number of cases (PCR and Antigen) per 100,000 people in Clayton County is 25,555.
- In Clayton County 159,269 residents (56%) have received at least one dose of a COVID-19 vaccine and 143,458 (51%) have been fully vaccinated.
- As March 12, 2023, Clayton County has 63,319 (44%) fully vaccinated individuals that have received an additional dose of vaccine.

TABLE 1. CUMULATIVE COVID-19 CASES AND PERCENT CHANGE FOR CLAYTON COUNTY

	Mar 06	Mar 07	Mar 08	Mar 09	Mar 10	Mar 11	Mar 12
Clayton County	70069	70074	70081	70084	70093	70096	70102
% Change	0.02%	0.03%	0.01%	0.00%	0.01%	0.00%	0.01%

FIGURE 1. DAILY NEW COVID-19 POSITIVE INDIVIDUALS FOR CLAYTON COUNTY OVER 7-DAY PERIOD

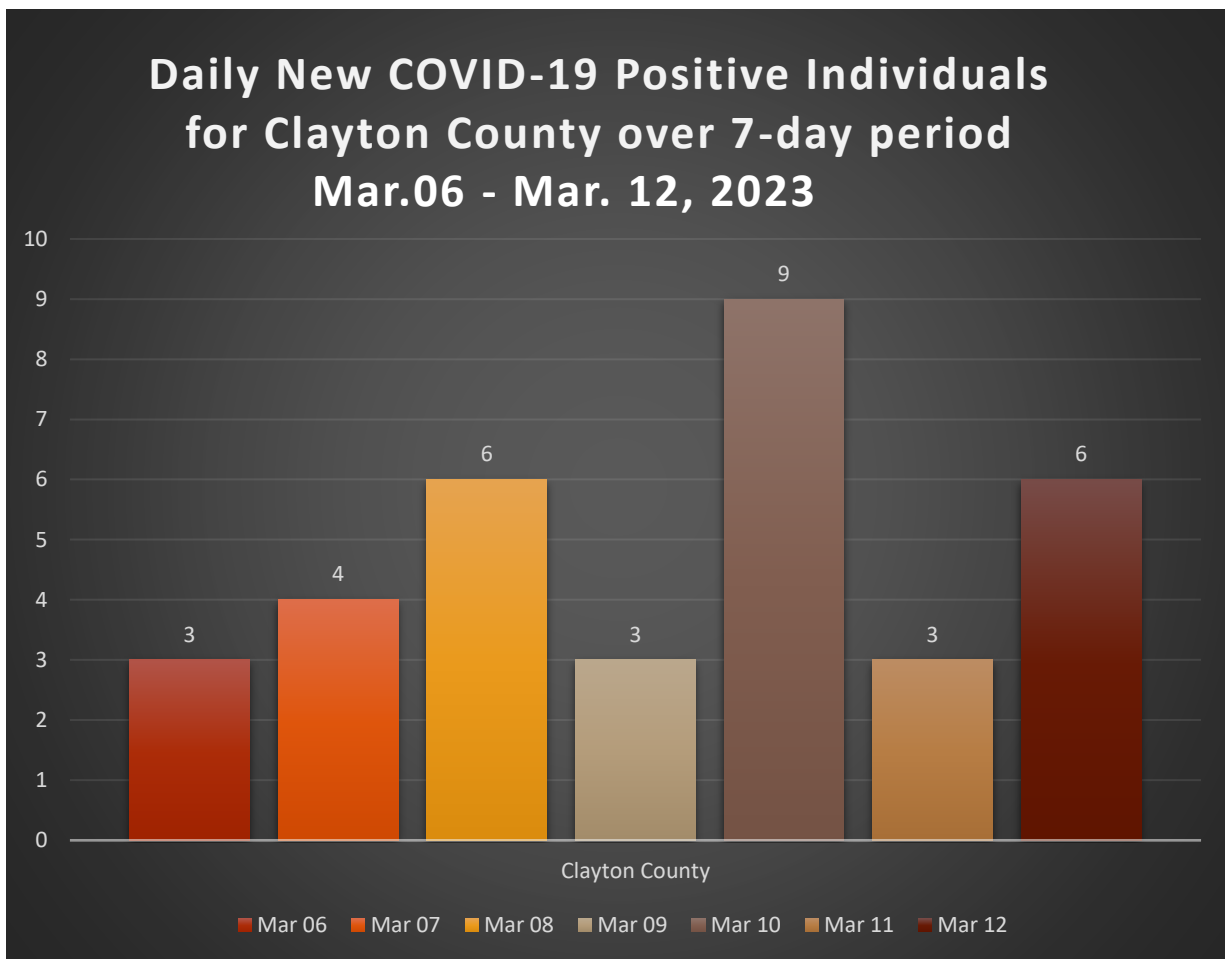


TABLE 2. CUMULATIVE COVID-19 CASE COUNTS BY CITY AND %TOTAL OF CLAYTON COUNTY CASES

City	Mar 06	Mar 07	Mar 08	Mar 09	Mar 10	Mar 11	Mar 12	% Total*
Jonesboro	21277	21278	21279	21281	21284	21285	21286	30.1%
Riverdale	14815	14815	14818	14818	14820	14820	14820	21.1%
Hampton	4832	4832	4833	4833	4833	4833	4834	6.9%
Forest Park	5970	5971	5972	5972	5972	5973	5974	8.5%
Morrow	5846	5848	5848	5848	5850	5850	5851	8.3%
Ellenwood	4306	4306	4306	4306	4307	4308	4308	6.1%
Rex	4520	4520	4520	4521	4521	4521	4522	6.5%
Atlanta	2927	2927	2927	2927	2927	2927	2928	4.2%
Lake City	313	313	313	313	313	313	313	0.4%
Stockbridge	1039	1039	1039	1039	1039	1039	1039	1.5%
College Park	1609	1609	1609	1609	1609	1609	1609	2.3%
Conley	1163	1163	1163	1163	1163	1163	1163	1.7%
Fayetteville	735	735	735	735	735	735	735	1.0%
Lovejoy	241	241	241	241	242	242	242	0.3%
Unknown	476	477	478	478	478	478	478	0.7%
Total	70069	70074	70081	70084	70093	70096	70102	100%

TABLE 3. DAILY NUMBER OF NEW COVID-19 CASES BY CITY

City	Mar 06	Mar 07	Mar 08	Mar 09	Mar 10	Mar 11	Mar 12	Total
Jonesboro	1	1	1	2	3	1	1	10
Riverdale	0	0	3	0	2	0	0	5
Hampton	1	0	1	0	0	0	1	3
Forest Park	1	1	1	0	0	1	1	5
Morrow	0	2	0	0	2	0	1	5
Ellenwood	0	0	0	0	1	1	0	2
Rex	0	0	0	1	0	0	1	2
Atlanta	0	0	0	0	0	0	1	1
Lake City	0	0	0	0	0	0	0	0
Stockbridge	0	0	0	0	0	0	0	0
College Park	0	0	0	0	0	0	0	0
Conley	0	0	0	0	0	0	0	0
Fayetteville	0	0	0	0	0	0	0	0
Lovejoy	0	0	0	0	1	0	0	1
Unknown	0	0	0	0	0	0	0	0
Total	3	4	6	3	9	3	6	34

*The percent total defines the percent of cases in Clayton County that comes from each city.

TABLE 4. COVID-19 CASES HOSPITALIZATION AND DEATH COUNTS IN CLAYTON COUNTY

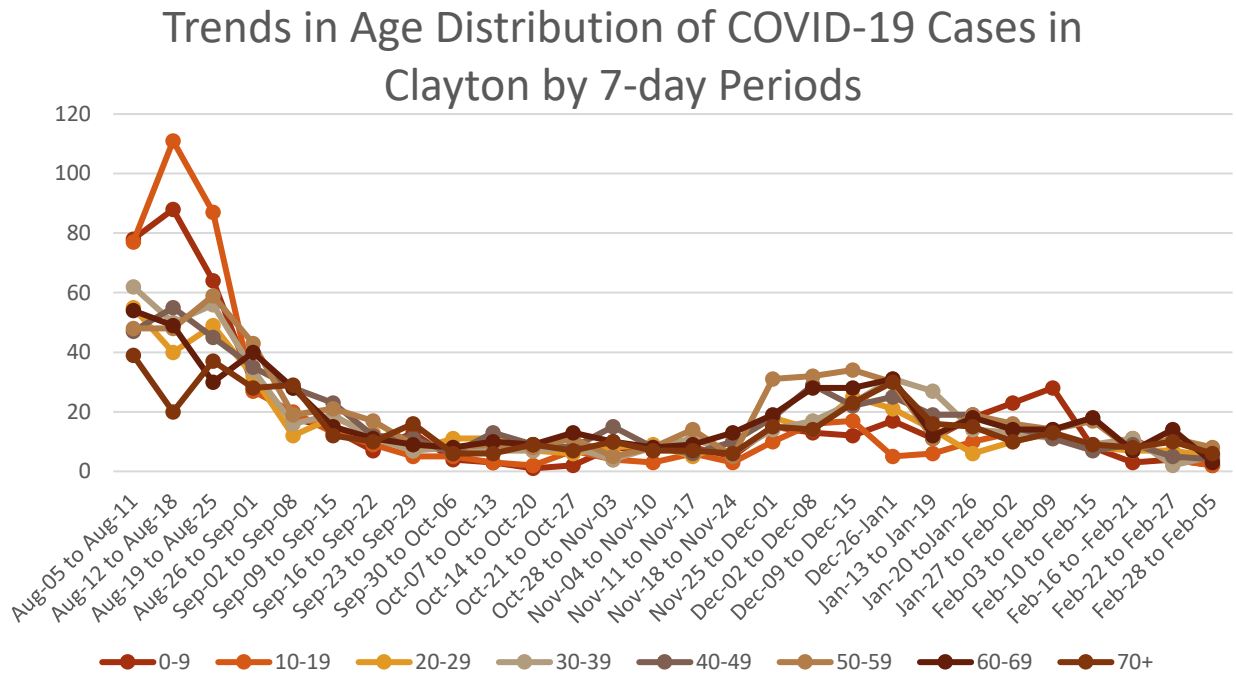
	Previous 14 Days 2/13-2/26	Recent 14 Days 2/27- 3/12	% Change
Needed Hospitalization	16	4	-75.0%

	Total Count	% of Cases That Died
Died	200	0.3%

TABLE 5. DEMOGRAPHIC DATA OF COVID-19 CASES IN CLAYTON COUNTY

Demographic		Count	%
Gender			
	Female	40770	58.2%
	Male	29046	41.4%
	Unknown	286	0.4%
Age Group			
	0-9	6034	8.6%
	10-19	8738	12.5%
	20-29	11940	17.0%
	30-39	12757	18.2%
	40-49	10858	15.5%
	50-59	9711	13.9%
	60-69	6278	8.96%
	70+	3757	5.36%
Race			
	Asian	1803	2.5%
	Black	44579	62.2%
	Other	5145	7.2%
	White	7265	10.1%
	Unknown	12916	18.0%
Ethnicity			
	Hispanic/Latino	8722	12.4%
	Non-Hispanic/Latino	48439	69.1%
	Unknown/Not Specified	12941	18.5%

FIGURE 2. DISTRIBUTION OF POSITIVE CASES BY AGE OVER 7-DAY PERIODS



Graphs shown reflect the number of confirmed cases by age using the date of first positive sample collection. All data reported are preliminary and subject to change.

FIGURE 3. PROPORTION OF COVID-19 CASES BY RACE IN CLAYTON COUNTY

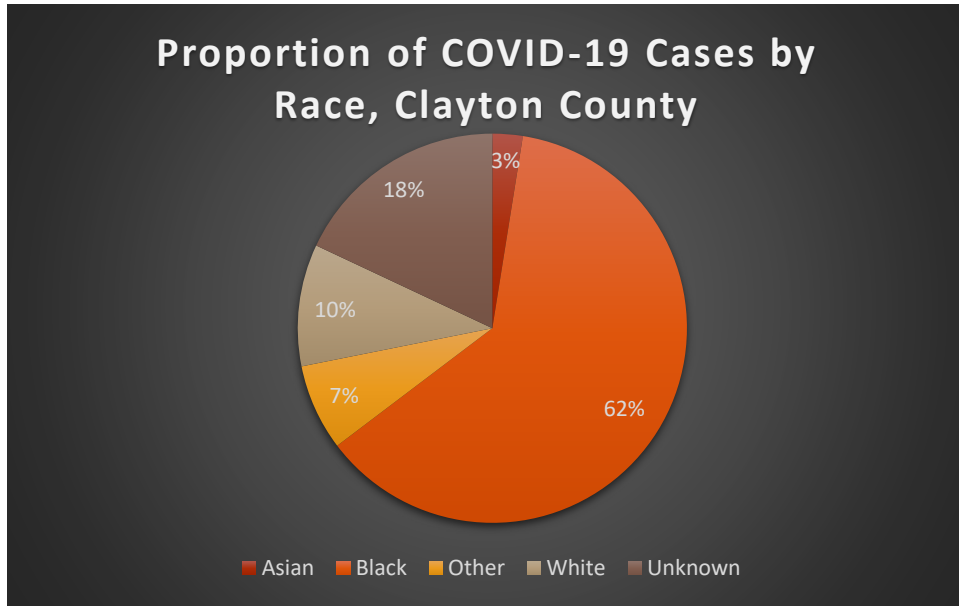


FIGURE 4. COVID-19 CASES BY RACE AND ETHNICITY IN CLAYTON COUNTY

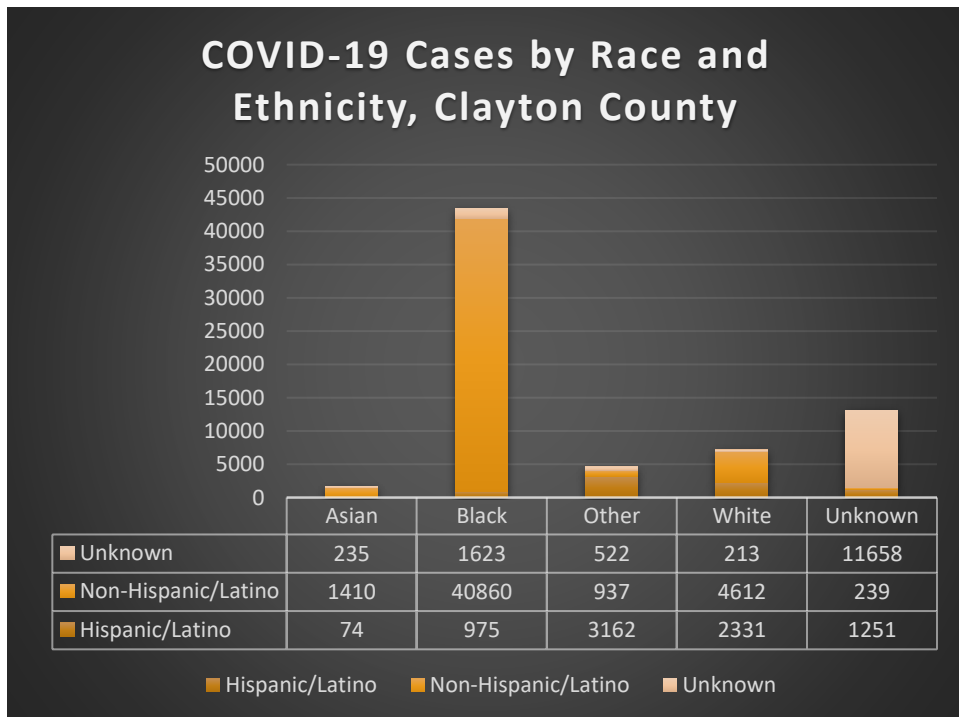


FIGURE 5. COVID-19 RELATED DEATHS BY AGE GROUP CLAYTON COUNTY

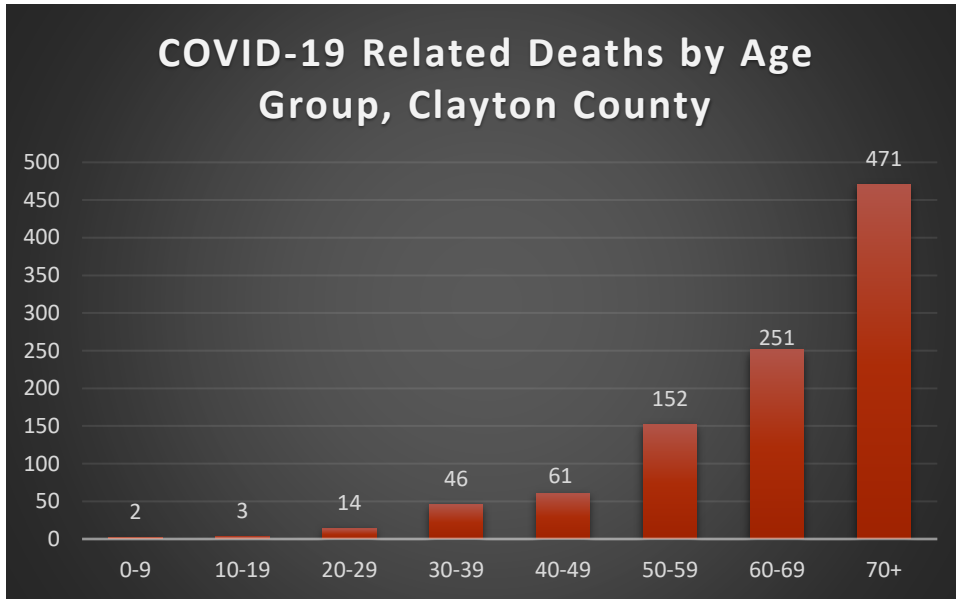


FIGURE 6. COVID-19 RELATED DEATHS BY RACE AND ETHNICITY IN CLAYTON COUNTY

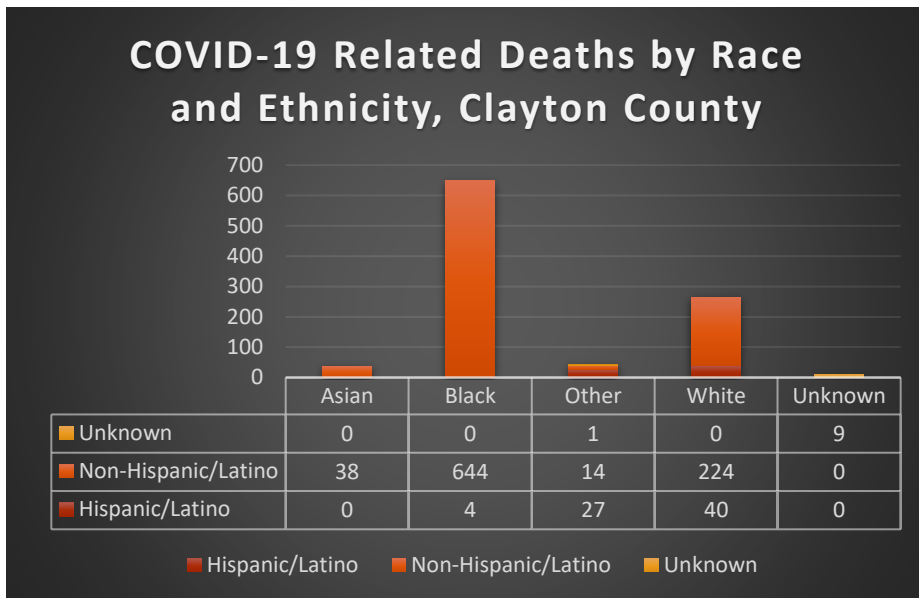




TABLE 6. COVID-19 CASE COUNTS BY ZIP CODE AND CHANGE IN TWO MOST RECENT 14-DAY PERIODS

Zip Code	Previous 3/05	Current 03/12	Percent of Total	Previous 14 Days 02/13/-2/26	Recent 14 Days 2/27-03/12	Percent Change in 14-Day Periods
All						
Clayton	70056	70102	100.0%	384	406	6%
30236	10561	10599	15.1%	67	41	-39%
30238	9397	9442	13.5%	59	41	-31%
30274	8292	8329	11.9%	41	27	-34%
30260	5764	5794	8.3%	23	34	48%
30297	5693	5705	8.1%	25	13	-48%
30296	5572	5605	8.0%	33	34	3%
30273	4218	4235	6.0%	19	25	32%
30294	4079	4104	5.9%	26	17	-35%
30349	4243	4266	6.1%	19	16	-16%
30228	4583	4612	6.6%	41	20	-51%
30288	1083	1084	1.5%	9	3	-67%
30281	987	991	1.4%	8	1	-88%
30215	714	715	1.0%	12	2	-83%
30250	213	215	0.3%	0	1	NA
30237	113	113	0.2%	0	1	NA
30326	35	35	0.0%	0	0	NA
30287	2	22	0.0%	1	0	-100%
30328	16	16	0.0%	0	0	NA
30298	37	37	0.1%	0	0	NA

Note: Data cleaning may lead to reassignment of cases from one territory to another based on corrected addresses which may appear as “decreases” when compared to previous counts. Zip codes with fewer than 5 cases reported were omitted from the table.

FIGURE 7: CLAYTON COUNTY VACCINE NUMBERS AS OF 3/06-03/12/2023

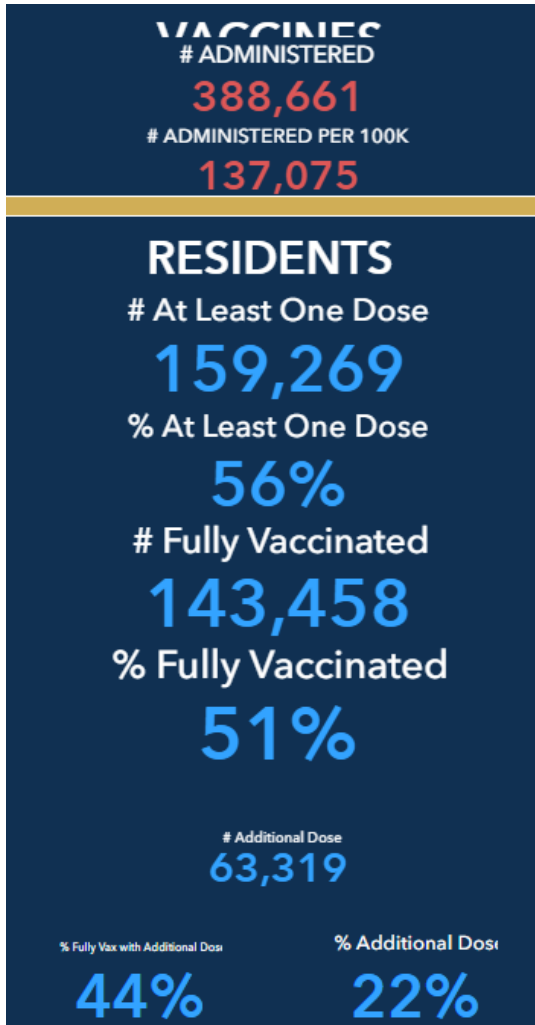


FIGURE 8. PROPORTION OF VACCINE RECIPIENTS WITH AT LEAST ONE DOSE BY SEX IN CLAYTON COUNTY

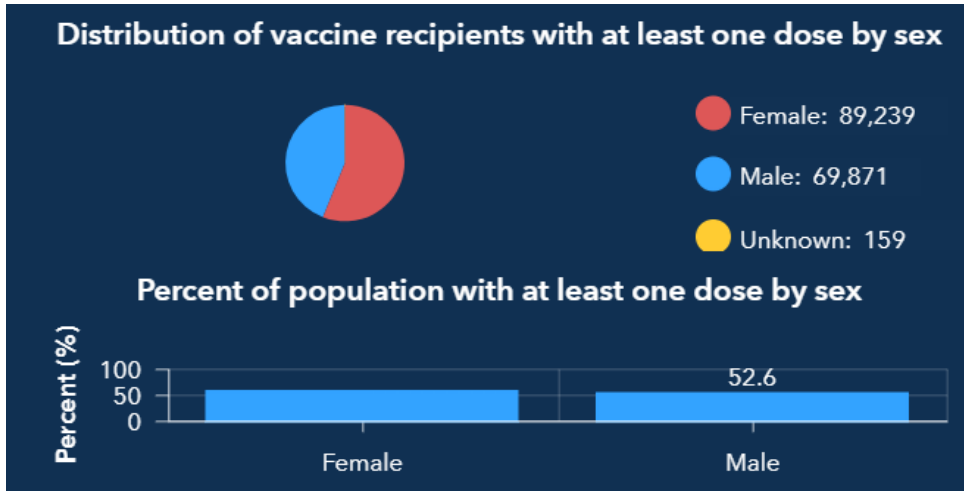


FIGURE 9. PROPORTION OF VACCINE RECIPIENTS WITH AT LEAST ONE DOSE BY AGE IN CLAYTON COUNTY

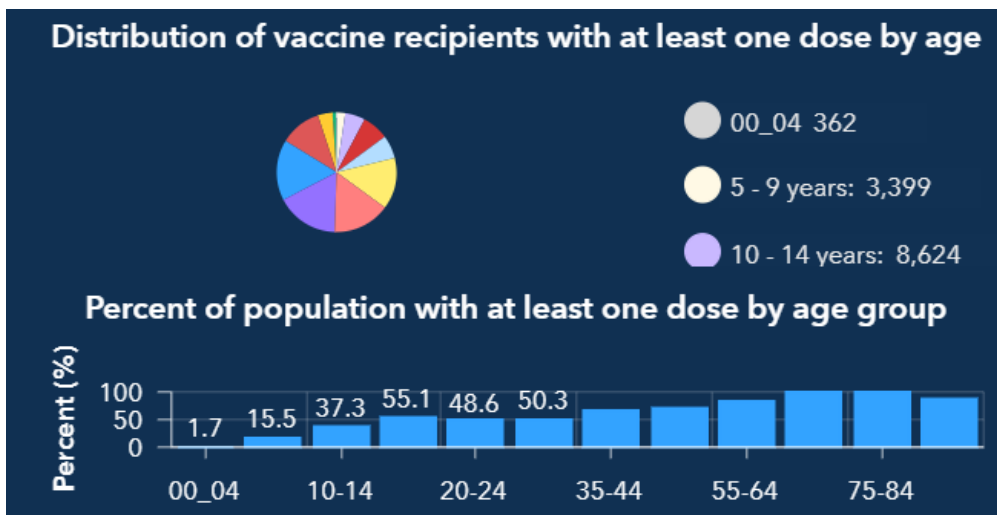


FIGURE 10. PROPORTION OF VACCINE RECIPIENTS WITH AT LEAST ONE DOSE BY ETHNICITY IN CLAYTON COUNTY

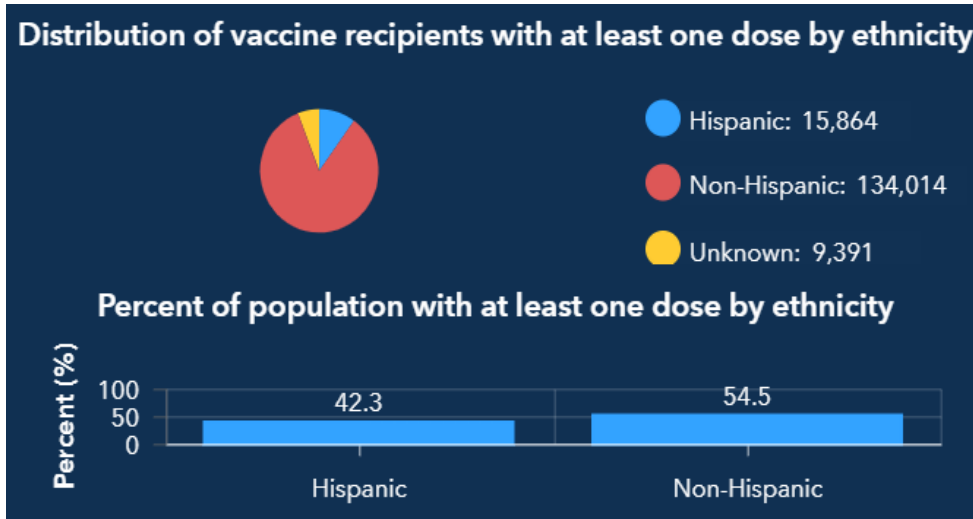


FIGURE 11. PROPORTION OF VACCINE RECIPIENTS WITH AT LEAST ONE DOSE BY RACE IN CLAYTON COUNTY

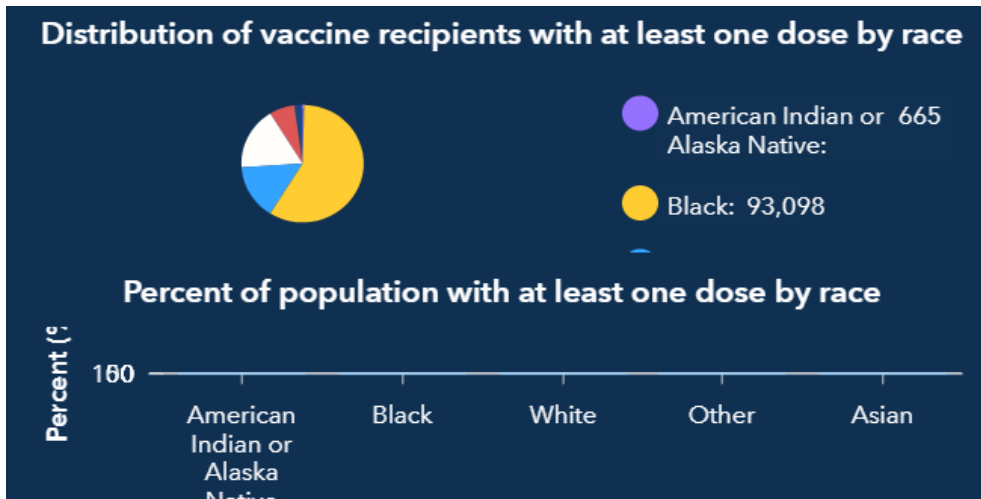
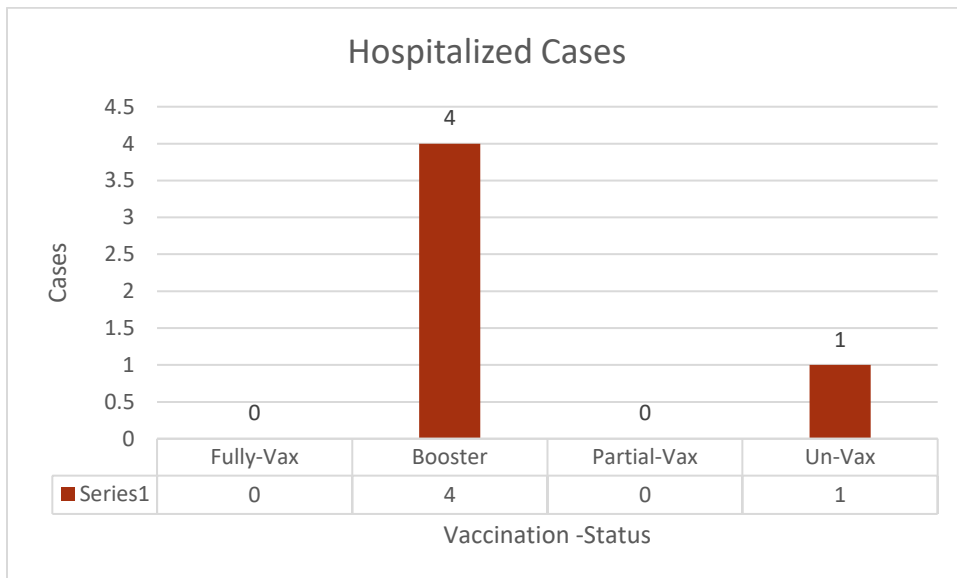
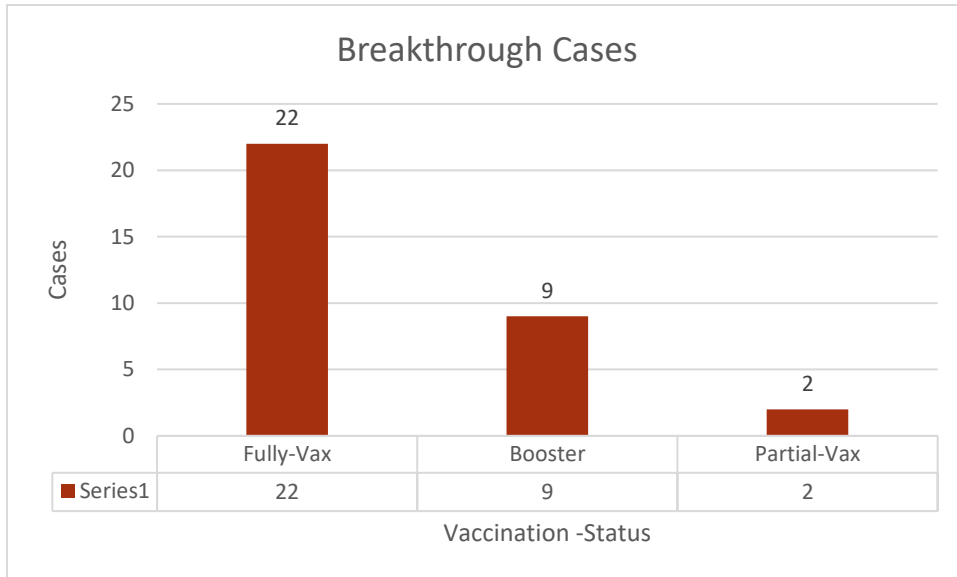


FIGURE 12. CLAYTON COUNTY BREAKTHROUGH CASES





GEORGIA DEPARTMENT OF PUBLIC HEALTH

Clayton County Health District