

## **COVID-19 SUMMARY REPORT FOR CLAYTON COUNTY**

### **Clayton County, Georgia From 3/20– 3/26/2023**

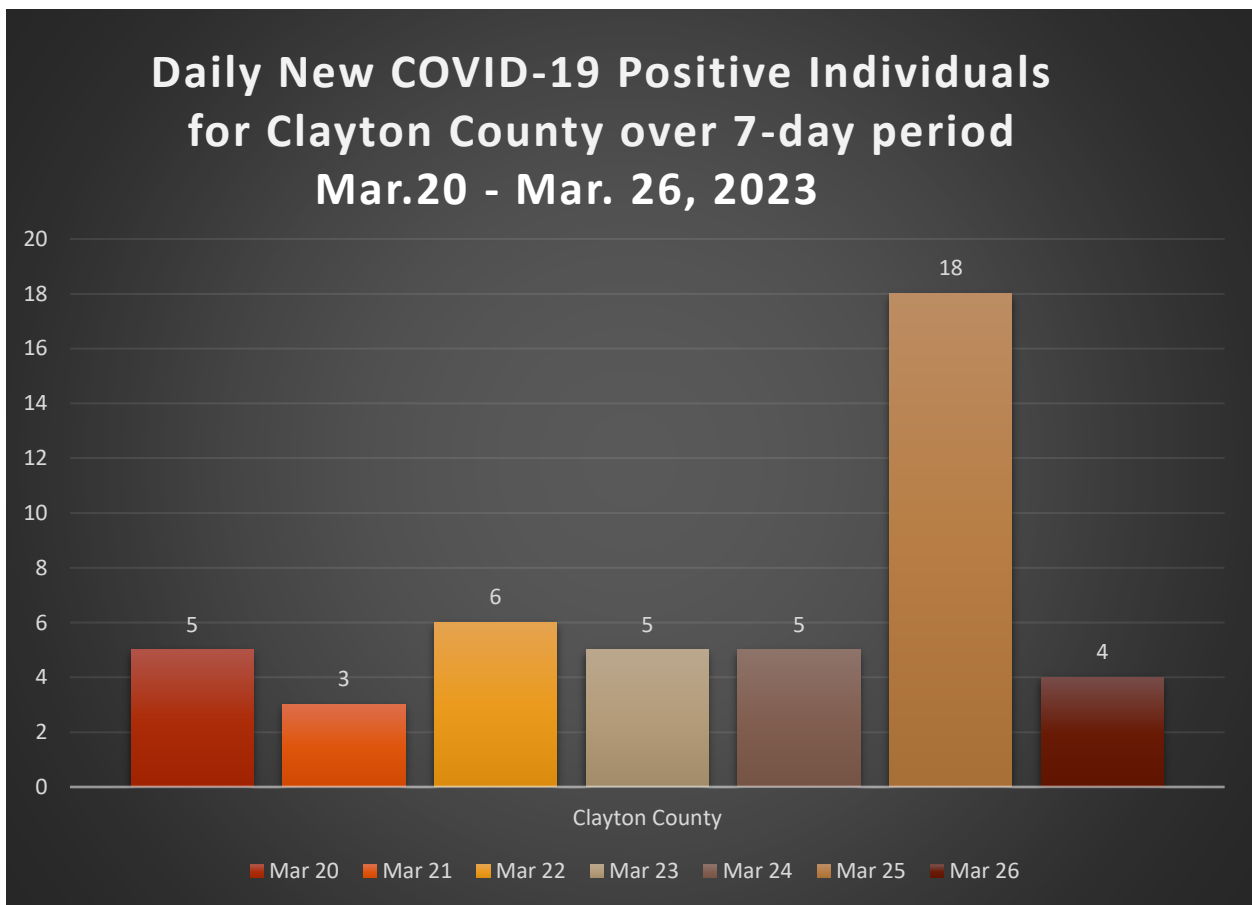
Created: March 26, 2023  
Source: Clayton County Health District and  
Georgia Department of Public Health, State  
Electronic Notifiable Disease Surveillance System

- As of March 26, 2023, Clayton County has 70,208 cases of 2019 Novel Coronavirus (COVID-19).
- There were 46 new positive COVID-19 tests reported in Clayton County from 03/20-03/26.
- Clayton County accounts for approximately 3.0% of the total cases in Georgia.
- 13.0% of the positive cases in Clayton County have been hospitalized from 3/20-03/26.
- 0 % of positive cases in Clayton County have died from 03/20-03/26.
- The average percent of Positive PCR tests in Clayton County over the last 7 days is 7.5%.
- The total number of confirmed cases (PCR) per 100,000 people in Clayton County is 23,092.
- The total number of cases (PCR and Antigen) per 100,000 people in Clayton County is 25,606.
- In Clayton County 159,318 residents (56%) have received at least one dose of a COVID-19 vaccine and 143,503 (51%) have been fully vaccinated.
- As March 26, 2023, Clayton County has 63,441 (44%) fully vaccinated individuals that have received an additional dose of vaccine.

**TABLE 1. CUMULATIVE COVID-19 CASES AND PERCENT CHANGE FOR CLAYTON COUNTY**

	Mar 20	Mar 21	Mar 22	Mar 23	Mar 24	Mar 25	Mar 26
Clayton County	70167	70170	70176	70181	70186	70204	70208
% Change	0.01%	0.01%	0.01%	0.01%	0.01%	0.03%	0.01%

**FIGURE 1. DAILY NEW COVID-19 POSITIVE INDIVIDUALS FOR CLAYTON COUNTY OVER 7-DAY PERIOD**



**TABLE 2. CUMULATIVE COVID-19 CASE COUNTS BY CITY AND %TOTAL OF CLAYTON COUNTY CASES**

City	Mar 20	Mar 21	Mar 22	Mar 23	Mar 24	Mar 25	Mar 26	% Total*
Jonesboro	21294	21294	21298	21298	21298	21304	21305	<b>30.1%</b>
Riverdale	14837	14838	14838	14839	14841	14845	14845	<b>21.1%</b>
Hampton	4841	4841	4841	4841	4842	4843	4843	<b>6.9%</b>
Forest Park	5980	5980	5980	5981	5981	5983	5983	<b>8.5%</b>
Morrow	5853	5853	5854	5854	5854	5857	5857	<b>8.3%</b>
Ellenwood	4308	4309	4309	4310	4311	4312	4313	<b>6.1%</b>
Rex	4523	4524	4524	4525	4525	4525	4526	<b>6.4%</b>
Atlanta	2929	2929	2929	2929	2929	2929	2929	<b>4.2%</b>
Lake City	313	313	313	313	313	313	313	<b>0.4%</b>
Stockbridge	1040	1040	1040	1041	1041	1041	1041	<b>1.5%</b>
College Park	1627	1627	1627	1627	1627	1628	1628	<b>2.3%</b>
Conley	1166	1166	1167	1168	1169	1169	1169	<b>1.7%</b>
Fayetteville	745	745	745	745	745	745	746	<b>1.1%</b>
Lovejoy	243	243	243	243	243	243	243	<b>0.3%</b>
Unknown	0	0	0	0	0	0	0	<b>0.0%</b>
<b>Total</b>	<b>70167</b>	<b>70170</b>	<b>70176</b>	<b>70181</b>	<b>70186</b>	<b>70204</b>	<b>70208</b>	<b>100%</b>

**TABLE 3. DAILY NUMBER OF NEW COVID-19 CASES BY CITY**

City	Mar 20	Mar 21	Mar 22	Mar 23	Mar 24	Mar 25	Mar 26	Total
Jonesboro	2	0	4	0	0	6	1	<b>13</b>
Riverdale	2	1	0	1	2	4	0	<b>10</b>
Hampton	0	0	0	0	1	1	0	<b>2</b>
Forest Park	1	0	0	1	0	2	0	<b>4</b>
Morrow	0	0	1	0	0	3	0	<b>4</b>
Ellenwood	0	1	0	1	1	1	1	<b>5</b>
Rex	0	1	0	1	0	0	1	<b>3</b>
Atlanta	0	0	0	0	0	0	0	<b>2</b>
Lake City	0	0	0	0	0	0	0	<b>0</b>
Stockbridge	0	0	0	1	0	0	0	<b>1</b>
College Park	0	0	0	0	0	1	0	<b>0</b>
Conley	0	0	1	1	1	0	0	<b>3</b>
Fayetteville	0	0	0	0	0	0	1	<b>0</b>
Lovejoy	0	0	0	0	0	0	0	<b>1</b>
Unknown	0	0	0	0	0	0	0	<b>0</b>
<b>Total</b>	<b>5</b>	<b>3</b>	<b>6</b>	<b>5</b>	<b>5</b>	<b>18</b>	<b>4</b>	<b>46</b>

\*The percent total defines the percent of cases in Clayton County that comes from each city.

**TABLE 4. COVID-19 CASES HOSPITALIZATION AND DEATH COUNTS IN CLAYTON COUNTY**

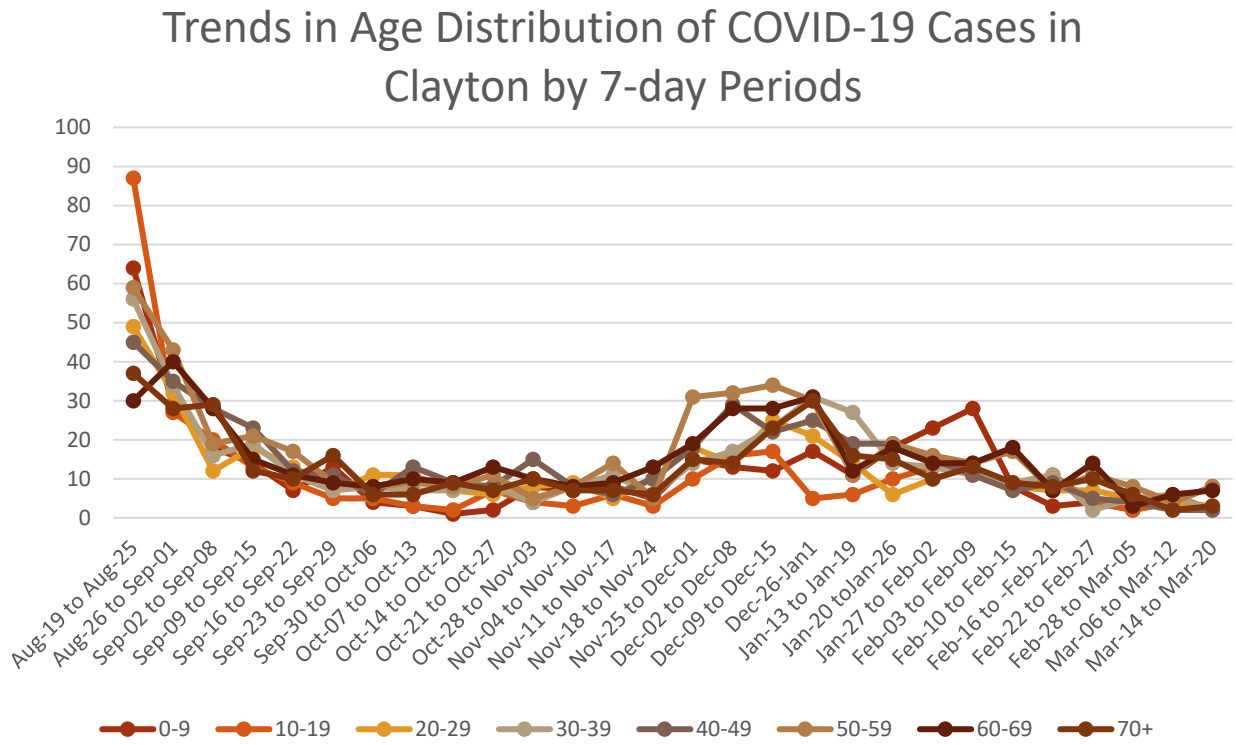
	Previous 14 Days 3/06-03/19	Recent 14 Days 3/20-3/26	% Change
Needed Hospitalization	6	6	0.0%

	Total Count	% of Cases That Died
Died	1012	1.4%

**TABLE 5. DEMOGRAPHIC DATA OF COVID-19 CASES IN CLAYTON COUNTY**

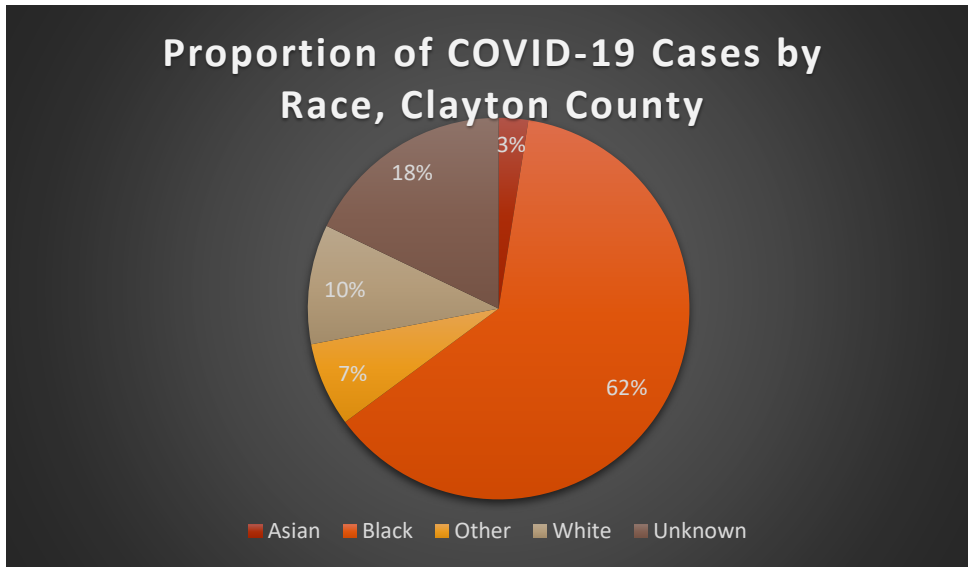
Demographic	Count	%
Gender		
Female	40814	58.2%
Male	29078	41.4%
Unknown	286	0.4%
Age Group		
0-9	6047	8.6%
10-19	8746	12.5%
20-29	11947	17.0%
30-39	12772	18.2%
40-49	10861	15.5%
50-59	9721	13.9%
60-69	6288	8.96%
70+	3764	5.37%
Race		
Asian	1808	2.5%
Black	45070	62.4%
Other	5156	7.1%
White	7320	10.1%
Unknown	12916	17.9%
Ethnicity		
Hispanic/Latino	8733	12.4%
Non-Hispanic/Latino	48990	69.8%
Unknown/Not Specified	12485	17.8%

**FIGURE 2. DISTRIBUTION OF POSITIVE CASES BY AGE OVER 7-DAY PERIODS**

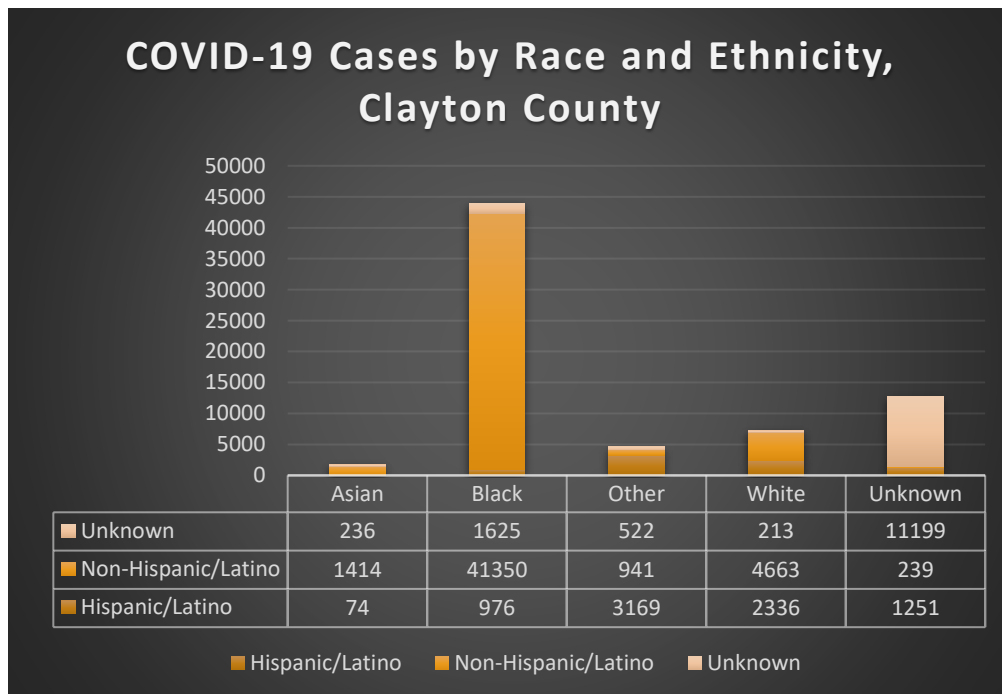


Graphs shown reflect the number of confirmed cases by age using the date of first positive sample collection. All data reported are preliminary and subject to change.

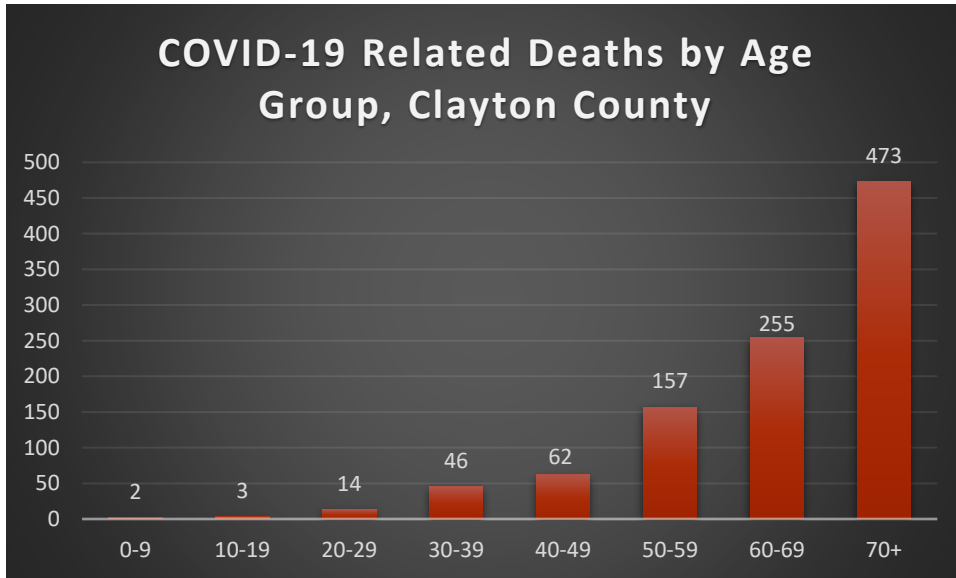
**FIGURE 3. PROPORTION OF COVID-19 CASES BY RACE IN CLAYTON COUNTY**



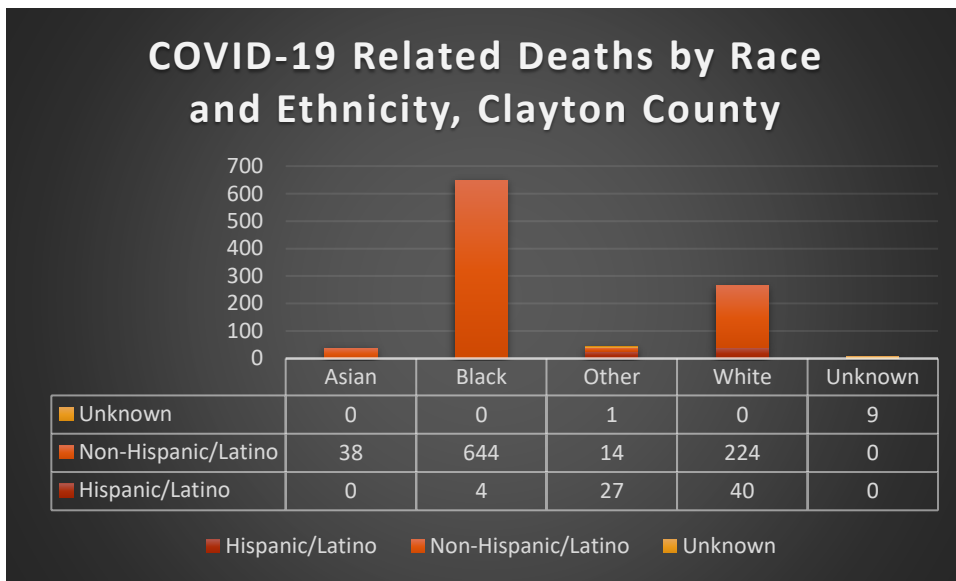
**FIGURE 4. COVID-19 CASES BY RACE AND ETHNICITY IN CLAYTON COUNTY**



**FIGURE 5. COVID-19 RELATED DEATHS BY AGE GROUP CLAYTON COUNTY**



**FIGURE 6. COVID-19 RELATED DEATHS BY RACE AND ETHNICITY IN CLAYTON COUNTY**





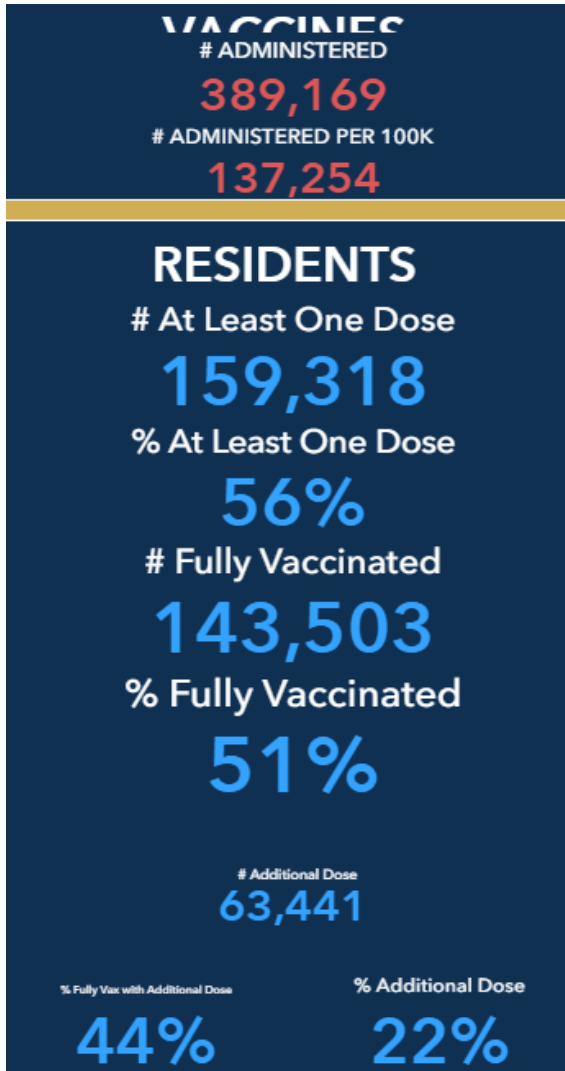
**TABLE 6. COVID-19 CASE COUNTS BY ZIP CODE AND CHANGE IN TWO MOST RECENT 14-DAY PERIODS**

Zip Code	Previous 3/19	Current 03/26	Percent of Total	Previous 14 Days 03/06/-3/19	Recent 14 Days 3/20-03/26	Percent Change in 14-Day Periods
<b>All Clayton</b>	70162	70208	100.0%	384	406	6%
<b>30236</b>	10561	10599	15.1%	67	41	-39%
<b>30238</b>	9397	9442	13.4%	59	41	-31%
<b>30274</b>	8292	8329	11.9%	41	27	-34%
<b>30260</b>	5764	5794	8.3%	23	34	48%
<b>30297</b>	5693	5705	8.1%	25	13	-48%
<b>30296</b>	5572	5605	8.0%	33	34	3%
<b>30273</b>	4218	4235	6.0%	19	25	32%
<b>30294</b>	4079	4104	5.8%	26	17	-35%
<b>30349</b>	4243	4266	6.1%	19	16	-16%
<b>30228</b>	4583	4612	6.6%	41	20	-51%
<b>30288</b>	1083	1084	1.5%	9	3	-67%
<b>30281</b>	987	991	1.4%	8	1	-88%
<b>30215</b>	714	715	1.0%	12	2	-83%
<b>30250</b>	213	215	0.3%	0	1	NA
<b>30237</b>	113	113	0.2%	0	1	NA
<b>30326</b>	35	35	0.0%	0	0	NA
<b>30287</b>	2	22	0.0%	1	0	-100%
<b>30328</b>	16	16	0.0%	0	0	NA
<b>30298</b>	37	37	0.1%	0	0	NA

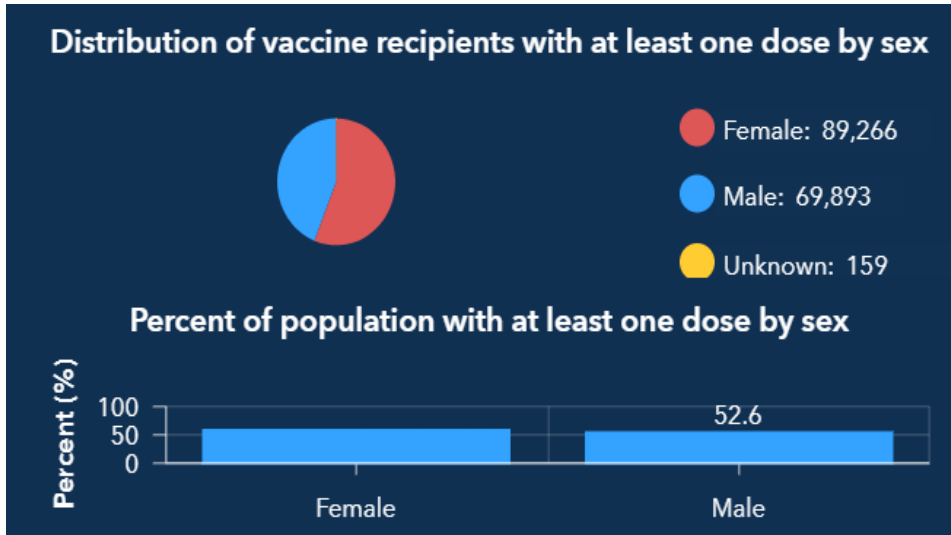
Note: Data cleaning may lead to reassignment of cases from one territory to another based on corrected addresses which may appear as “decreases” when compared to previous counts. Zip codes with fewer than 5 cases reported were omitted from the table.



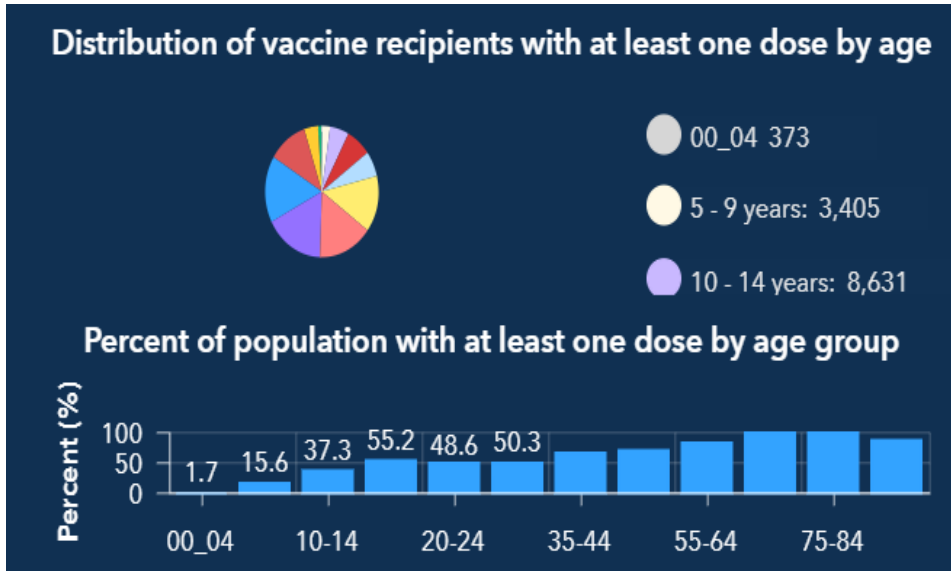
## FIGURE 7: CLAYTON COUNTY VACCINE NUMBERS AS OF 3/20-03/26/2023



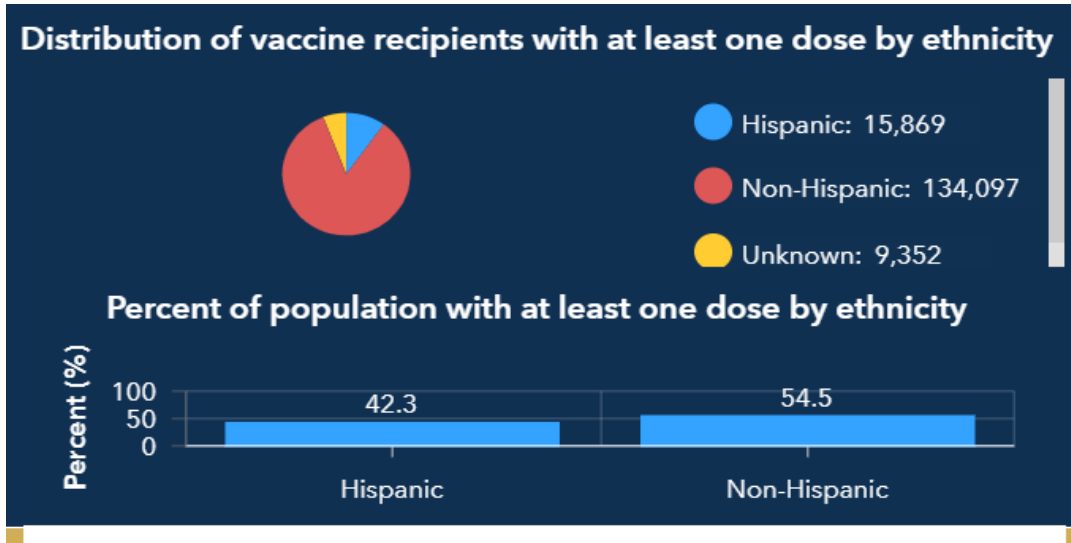
**FIGURE 8. PROPORTION OF VACCINE RECIPIENTS WITH AT LEAST ONE DOSE BY SEX IN CLAYTON COUNTY**



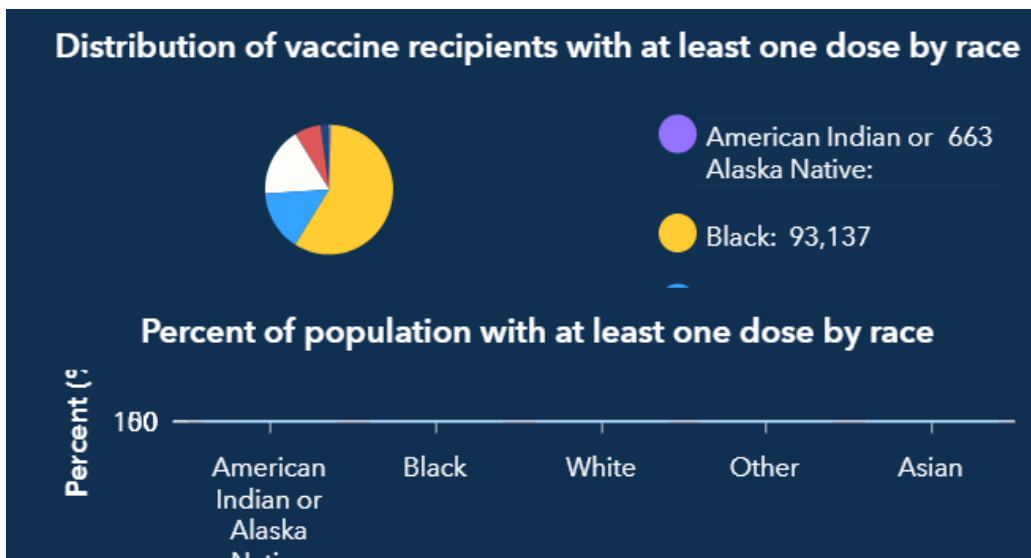
**FIGURE 9. PROPORTION OF VACCINE RECIPIENTS WITH AT LEAST ONE DOSE BY AGE IN CLAYTON COUNTY**



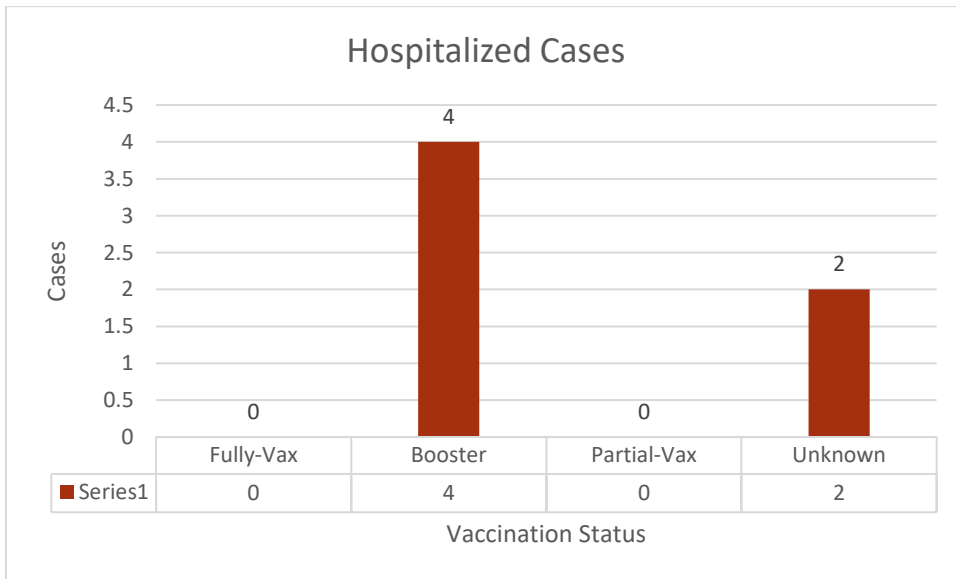
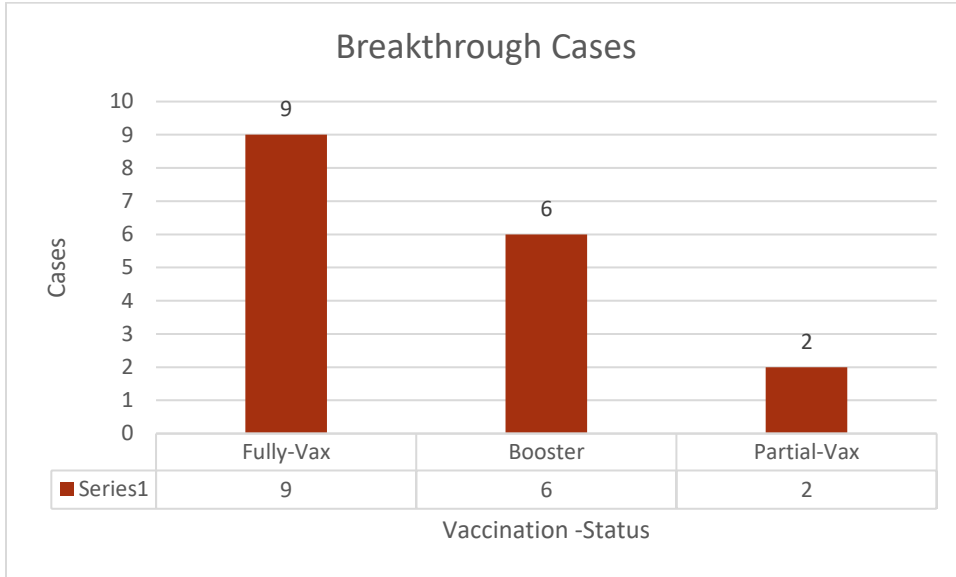
**FIGURE 10. PROPORTION OF VACCINE RECIPIENTS WITH AT LEAST ONE DOSE BY ETHNICITY IN CLAYTON COUNTY**



**FIGURE 11. PROPORTION OF VACCINE RECIPIENTS WITH AT LEAST ONE DOSE BY RACE IN CLAYTON COUNTY**



**FIGURE 12. CLAYTON COUNTY BREAKTHROUGH CASES**





GEORGIA DEPARTMENT OF PUBLIC HEALTH

Clayton County Health District