

COVID-19 SUMMARY REPORT FOR CLAYTON COUNTY

Clayton County, Georgia From 5/01– 5/07/2023

Created: May 08, 2023
Source: Clayton County Health District and
Georgia Department of Public Health, State
Electronic Notifiable Disease Surveillance System

- As of May 07, 2023, Clayton County has 70,420 cases of 2019 Novel Coronavirus (COVID-19)
- There were 38 new positive COVID-19 tests reported in Clayton County from 05/01-05/07.
- Clayton County accounts for approximately 3.0% of the total cases in Georgia.
- 2.6% of the positive cases in Clayton County have been hospitalized from 05/01-05/07.
- 0% of positive cases in Clayton County have died from 05/01-05/07, no deaths.
- The average percent of Positive PCR tests in Clayton County over the last 7 days is 5.1%.
- The total number of confirmed cases (PCR) per 100,000 people in Clayton County is 23,181.
- The total number of cases (PCR and Antigen) per 100,000 people in Clayton County is 25,715.
- In Clayton County 159,423, residents (56%) have received at least one dose of a COVID-19 vaccine and 143,608 (51%) have been fully vaccinated.
- As May 07, 2023, Clayton County has 63,704 (44%) fully vaccinated individuals that have received an additional dose of vaccine.

TABLE 1. CUMULATIVE COVID-19 CASES AND PERCENT CHANGE FOR CLAYTON COUNTY

	May 01	May 02	May 03	May 04	May 05	May 06	May 07
Clayton County	70386	70393	70400	70404	70409	70414	70420
% Change	0.01%	0.02%	0.01%	0.01%	0.01%	0.01%	0.01%

FIGURE 1. DAILY NEW COVID-19 POSITIVE INDIVIDUALS FOR CLAYTON COUNTY OVER 7-DAY PERIOD

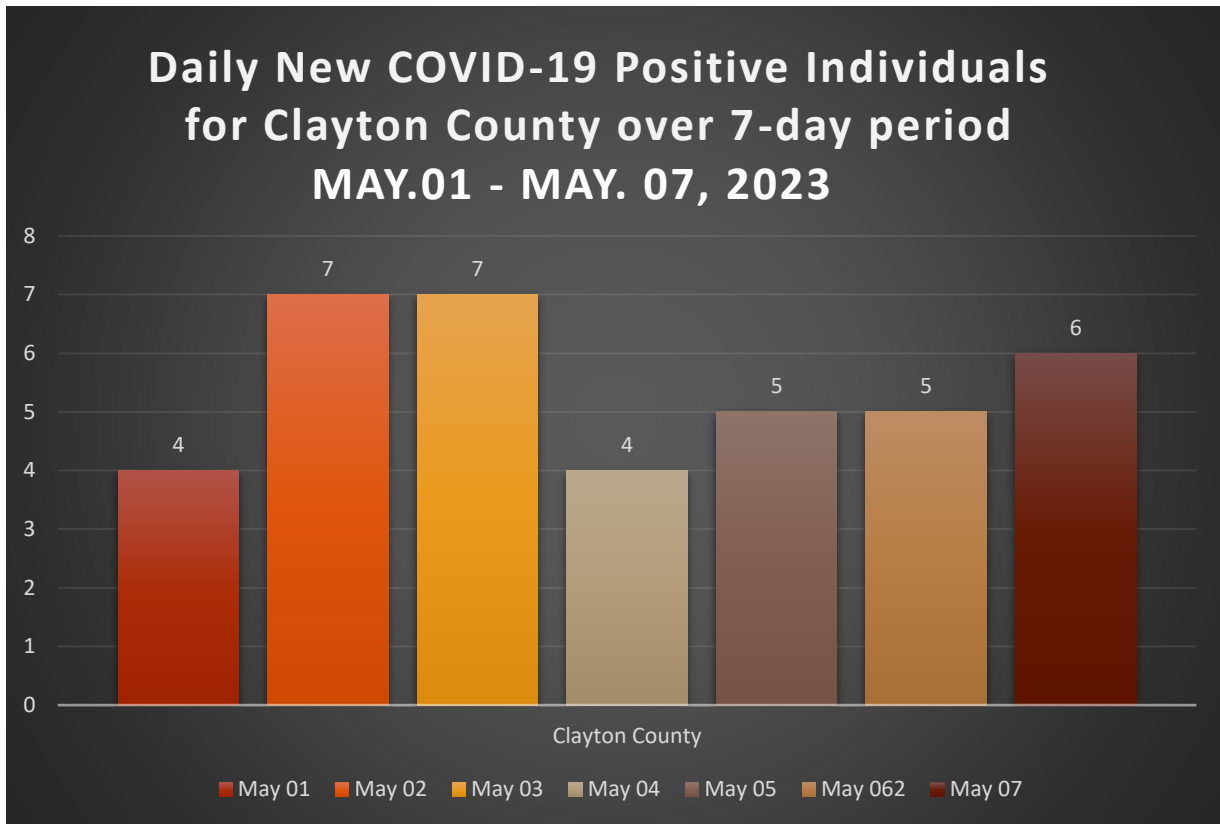


TABLE 2. CUMULATIVE COVID-19 CASE COUNTS BY CITY AND %TOTAL OF CLAYTON COUNTY CASES

City	May 01	May 02	May 03	May 04	May 05	May 06	May 07	% Total*
Jonesboro	21391	21391	21393	21395	21397	21400	21401	30.1%
Riverdale	14914	14918	14920	14921	14923	14923	14925	21.2%
Hampton	4866	4867	4868	4868	4868	4868	4869	6.9%
Forest Park	6000	6000	6001	6001	6001	6001	6001	8.5%
Morrow	5877	5877	5877	5878	5878	5878	5878	8.3%
Ellenwood	4322	4323	4323	4323	4324	4324	4324	6.1%
Rex	4530	4530	4530	4530	4530	4531	4533	6.4%
Atlanta	2941	2941	2941	2941	2941	2941	2941	4.2%
Lake City	312	312	312	312	312	312	312	0.4%
Stockbridge	1044	1044	1044	1044	1044	1044	1044	1.5%
College Park	1629	1630	1630	1630	1630	1631	1631	2.3%
Conley	1172	1172	1172	1172	1172	1172	1172	1.7%
Fayetteville	747	747	748	748	748	748	748	1.1%
Lovejoy	243	243	243	243	243	243	243	0.3%
Unknown	0	0	0	0	0	0	0	0.0%
Total	70386	70393	70400	70404	70409	70414	70420	100%

TABLE 3. DAILY NUMBER OF NEW COVID-19 CASES BY CITY

City	May 01	May 02	May 03	May 04	May 05	May 06	May 07	Total
Jonesboro	1	0	2	2	2	3	1	11
Riverdale	1	4	2	1	2	0	2	12
Hampton	1	1	1	0	0	0	1	4
Forest Park	1	0	1	0	0	0	0	2
Morrow	0	0	0	1	0	0	0	1
Ellenwood	0	1	0	0	1	0	0	2
Rex	0	0	0	0	0	1	2	3
Atlanta	0	0	0	0	0	0	0	0
Lake City	0	0	0	0	0	0	0	0
Stockbridge	0	0	0	0	0	0	0	0
College Park	0	1	0	0	0	1	0	0
Conley	0	0	0	0	0	0	0	0
Fayetteville	0	0	1	0	0	0	0	0
Lovejoy	0	0	0	0	0	0	0	1
Unknown	0	0	0	0	0	0	0	0
Total	4	7	7	4	5	5	6	38

*The percent total defines the percent of cases in Clayton County that comes from each city.

TABLE 4. COVID-19 CASES HOSPITALIZATION AND DEATH COUNTS IN CLAYTON COUNTY

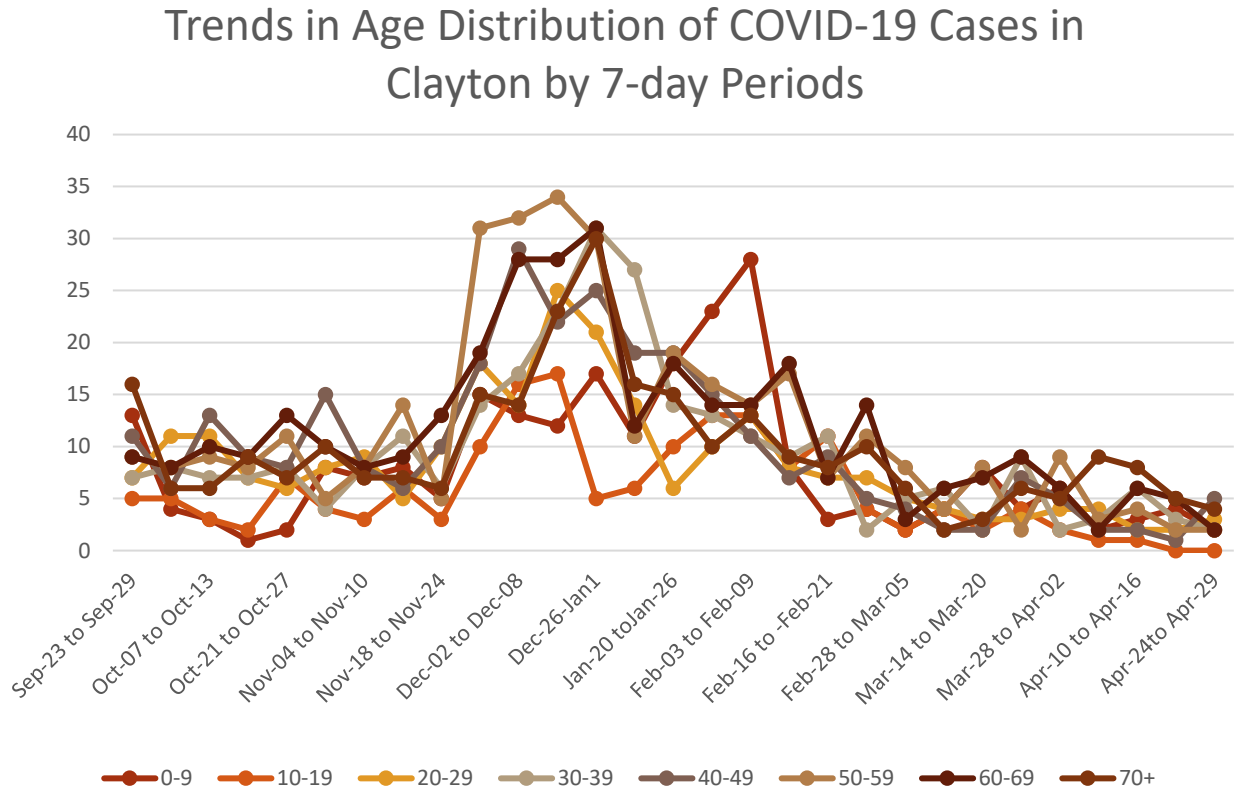
	Previous 14 Days 04/10- 4/23	Recent 14 Days 4/24- 05/07	% Change
Needed Hospitalization	9	5	-44.4%

	Total Count	% of Cases That Died
Died	1015	1.4%

TABLE 5. DEMOGRAPHIC DATA OF COVID-19 CASES IN CLAYTON COUNTY

Demographic	Count	%
Gender		
Female	40974	58.2%
Male	29178	41.4%
Unknown	286	0.4%
Age Group		
0-9	6080	8.6%
10-19	8766	12.5%
20-29	11976	17.0%
30-39	12810	18.2%
40-49	10885	15.5%
50-59	9754	13.9%
60-69	6330	8.99%
70+	3807	5.41%
Race		
Asian	1826	2.5%
Black	45717	62.5%
Other	5183	7.1%
White	7453	10.2%
Unknown	12916	17.7%
Ethnicity		
Hispanic/Latino	8871	12.6%
Non-Hispanic/Latino	49642	70.5%
Unknown/Not Specified	11907	16.9%

FIGURE 2. DISTRIBUTION OF POSITIVE CASES BY AGE OVER 7-DAY PERIODS



Graphs shown reflect the number of confirmed cases by age using the date of first positive sample collection. All data reported are preliminary and subject to change.

FIGURE 3. PROPORTION OF COVID-19 CASES BY RACE IN CLAYTON COUNTY

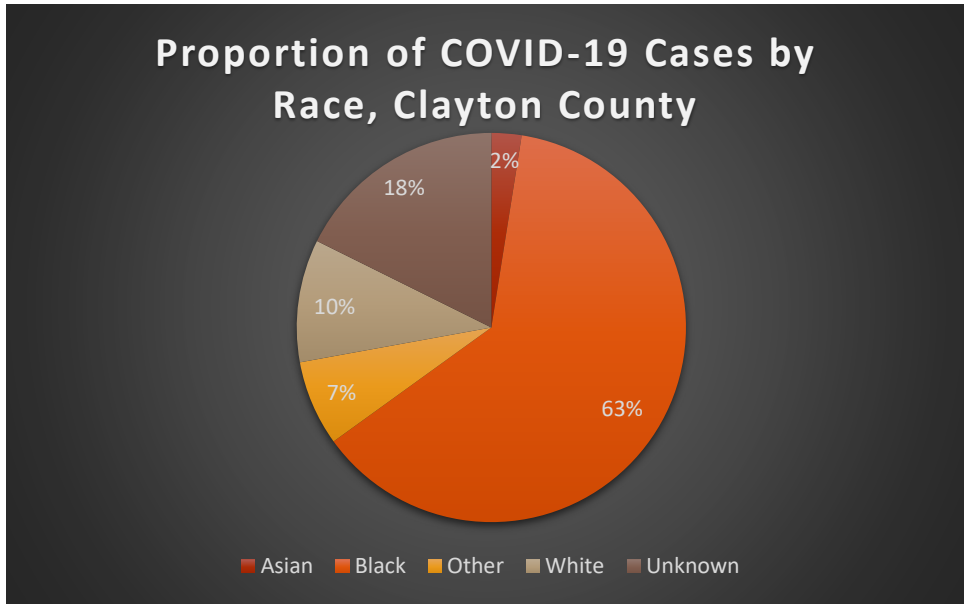


FIGURE 4. COVID-19 CASES BY RACE AND ETHNICITY IN CLAYTON COUNTY

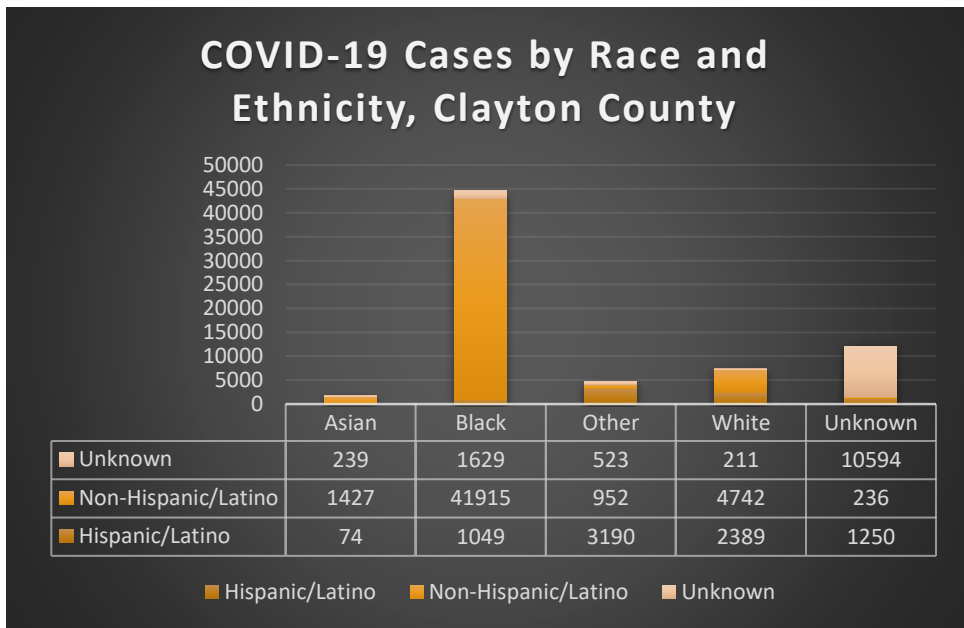


FIGURE 5. COVID-19 RELATED DEATHS BY AGE GROUP CLAYTON COUNTY

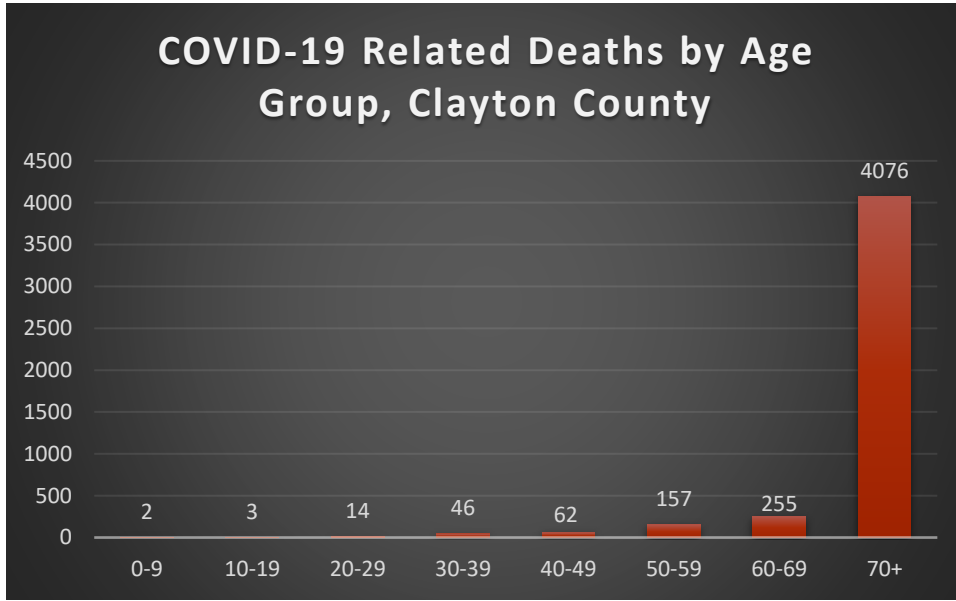


FIGURE 6. COVID-19 RELATED DEATHS BY RACE AND ETHNICITY IN CLAYTON COUNTY

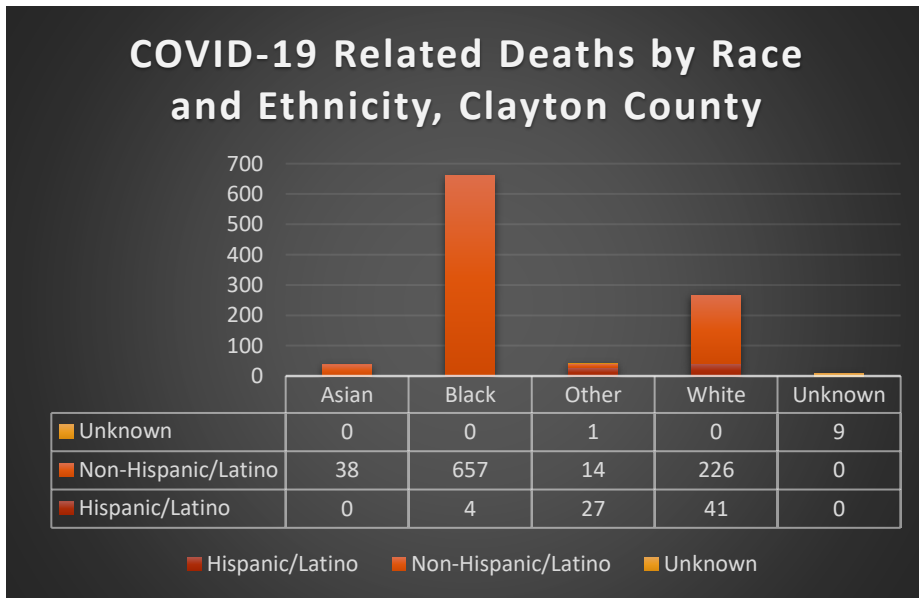


TABLE 6. COVID-19 CASE COUNTS BY ZIP CODE AND CHANGE IN TWO MOST RECENT 14-DAY PERIODS

Zip Code	Previous 4/30	Current 05/01	Percent of Total	Previous 14 Days 04/10/-4/23	Recent 14 Days 4/24-05/07	Percent Change in 14-Day Periods
All				384	406	6%
Clayton	70382	70420	100.0%			
30236	10561	10599	15.1%	67	41	-39%
30238	9397	9442	13.4%	59	41	-31%
30274	8292	8329	11.8%	41	27	-34%
30260	5764	5794	8.2%	23	34	48%
30297	5693	5705	8.1%	25	13	-48%
30296	5572	5605	8.0%	33	34	3%
30273	4218	4235	6.0%	19	25	32%
30294	4079	4104	5.8%	26	17	-35%
30349	4243	4266	6.1%	19	16	-16%
30228	4583	4612	6.5%	41	20	-51%
30288	1083	1084	1.5%	9	3	-67%
30281	987	991	1.4%	8	1	-88%
30215	714	715	1.0%	12	2	-83%
30250	213	215	0.3%	0	1	NA
30237	113	113	0.2%	0	1	NA
30326	35	35	0.0%	0	0	NA
30287	2	22	0.0%	1	0	-100%
30328	16	16	0.0%	0	0	NA
30298	37	37	0.1%	0	0	NA

Note: Data cleaning may lead to reassignment of cases from one territory to another based on corrected addresses which may appear as “decreases” when compared to previous counts. Zip codes with fewer than 5 cases reported were omitted from the table.

FIGURE 7: CLAYTON COUNTY VACCINE NUMBERS AS OF 05/01-05/07/2023

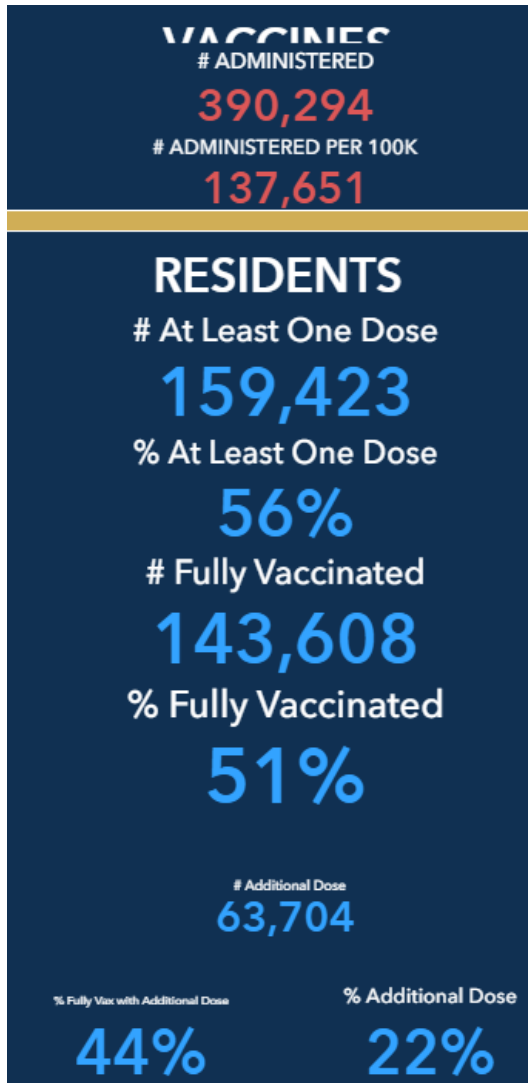


FIGURE 8. PROPORTION OF VACCINE RECIPIENTS WITH AT LEAST ONE DOSE BY SEX IN CLAYTON COUNTY

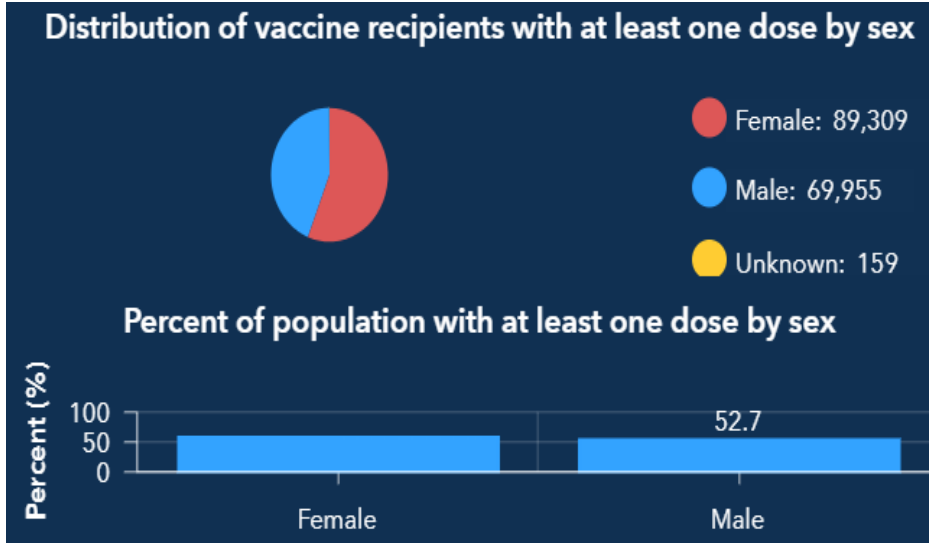


FIGURE 9. PROPORTION OF VACCINE RECIPIENTS WITH AT LEAST ONE DOSE BY AGE IN CLAYTON COUNTY

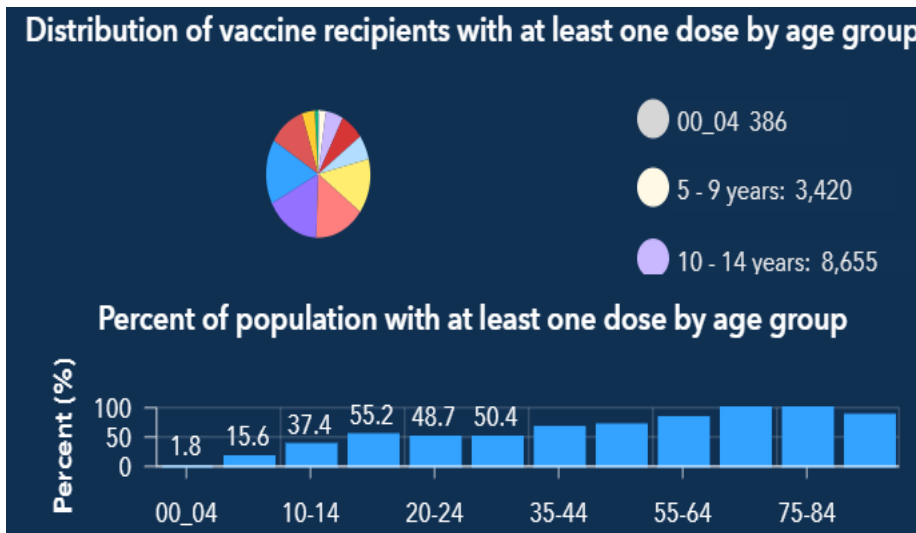


FIGURE 10. PROPORTION OF VACCINE RECIPIENTS WITH AT LEAST ONE DOSE BY ETHNICITY IN CLAYTON COUNTY

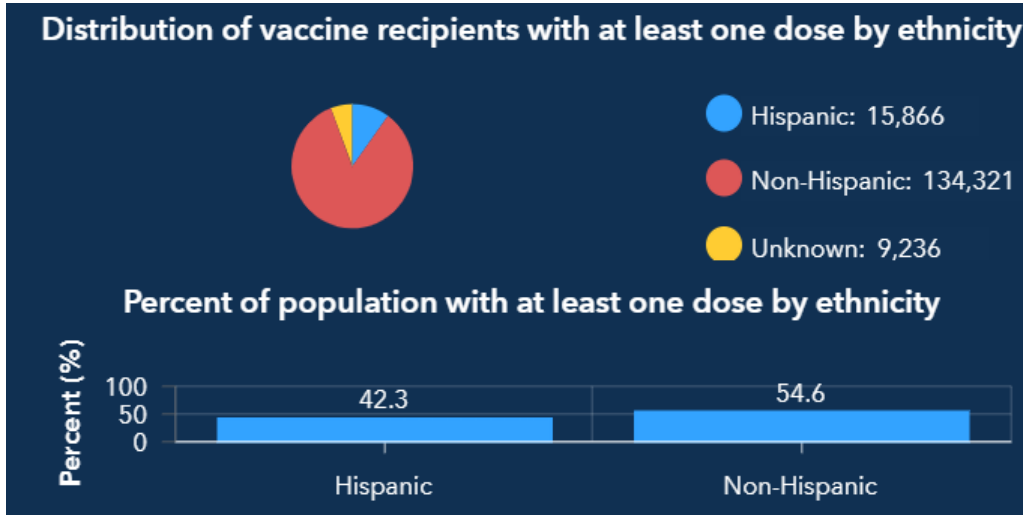


FIGURE 11. PROPORTION OF VACCINE RECIPIENTS WITH AT LEAST ONE DOSE BY RACE IN CLAYTON COUNTY

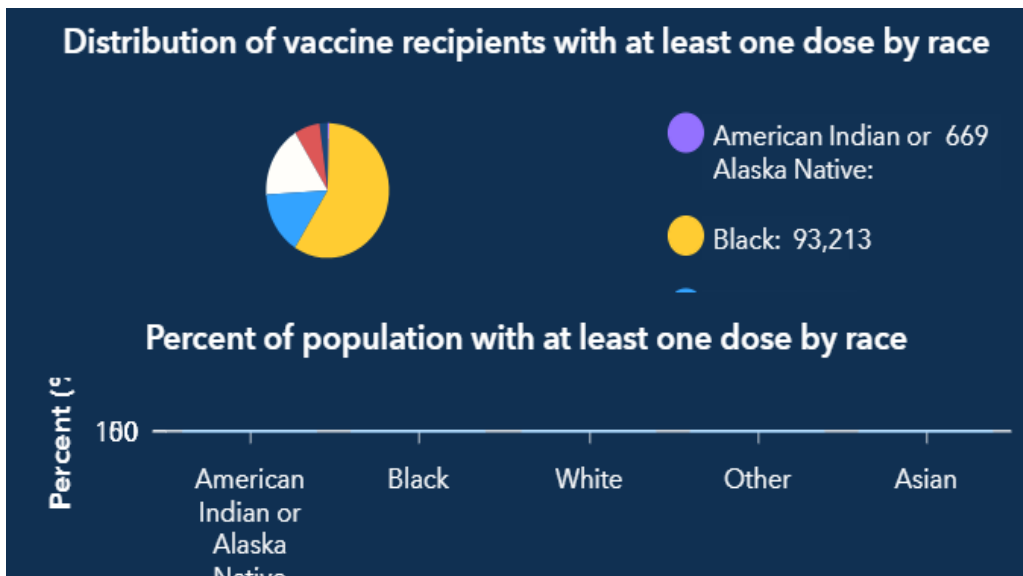
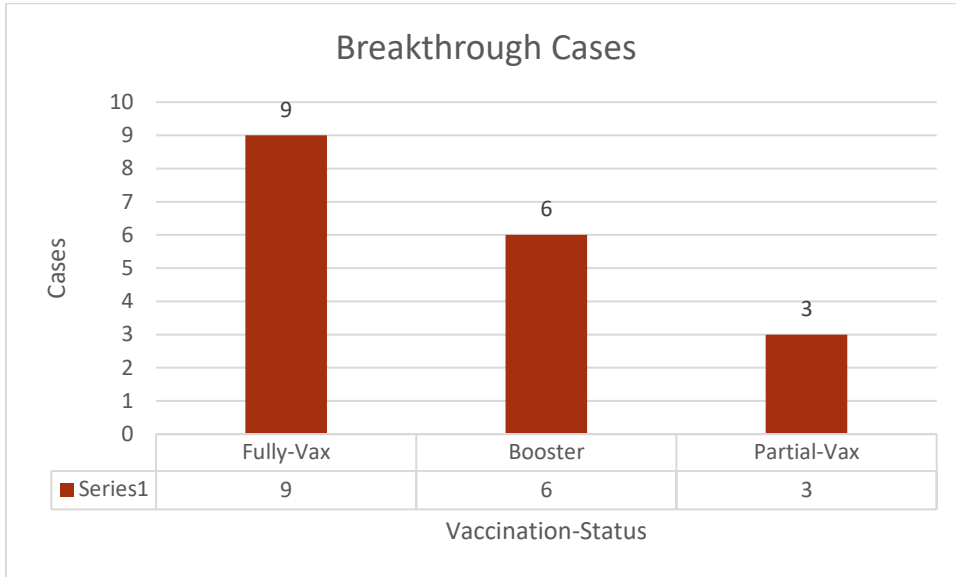


FIGURE 12. CLAYTON COUNTY BREAKTHROUGH CASES



- **THERE WERE NO HOSPITALIZED BREAKTHROUGH CASES**



GEORGIA DEPARTMENT OF PUBLIC HEALTH

Clayton County Health District